

Converting Colors

Hex(E8D4CF)

Have a look what the booklet for
Hex(E8D4CF) contains.

Hex(E8D4CF)	3
<i>Conversions</i>	4
<i>Details</i>	6
<i>Harmonies</i>	11
<i>Previews</i>	23
<i>Color Blindness Simulation</i>	26
<i>CSS Examples</i>	29

Color

Hex(E8D4CF)

Conversions

Conversions Part 1

Format	Color
Hex	E8D4CF
RGB	232, 212, 207
RGB Percent	91%, 83%, 81%
CMY	0.0902, 0.1686, 0.1882
CMYK	0.00, 0.09, 0.11, 0.09
HSL	12°, 35%, 86%
HSV	12°, 11%, 91%
XYZ	68.0847, 68.7478, 68.7127
YIQ	217.4100, 13.5250, 2.6850

Conversions

Conversions Part 2

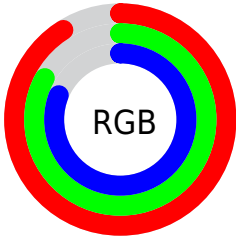
Format	Color
R _Y B	232, 213, 207
Decimal	15258831
CIE Lab	86.38, 6.09, 4.97
CIE LCh	86, 7.857, 39.204
Yxy	68.7478, 0.3312, 0.3345
Android (android.graphics.Color)	4293448911 (0xFFE8D4CF)
YUV	217.4100, -5.1321, 12.7954
Hunter-Lab	82.9143, 1.4745, 8.9052

Details

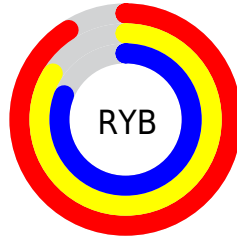
The Hex color **E8D4CF** is a light color, and the websafe version is hex **CCCCCC**. A complement of this color would be **CFE3E8**, and the grayscale version is **D9D9D9**.

A 20% lighter version of the original color is **FFFFFF**, and **B09D99** is the 20% darker color. If you saturate the color by 10%, you get **E8C1B8**, and if you desaturate by 10%, it is **E8E7E6**.

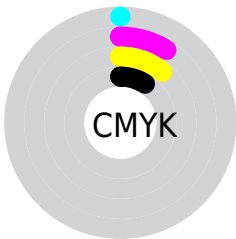
Distribution



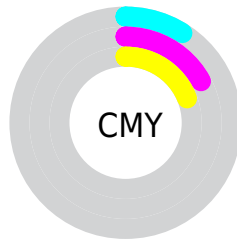
- Red (91%)
- Green (83%)
- Blue (81%)



- Red (91%)
- Yellow (84%)
- Blue (81%)



- Cyan (0%)
- Magenta (9%)
- Yellow (11%)
- Black (9%)



- Cyan (9%)
- Magenta (17%)
- Yellow (19%)

Brightness & Saturation Gradients

These gradients show how the Hex color E8D4CF changes by changing the brightness by 10 percent. The first figure shows a shift by +10% for each color and the second figure -10%.

Similar to the brightness gradients but the following saturation gradients show a change of the Hex color E8D4CF by changing the saturation by 10% instead.

 E8D4CF

FFFFFF

 E8D4CF

 CCB8B3

 B09D99


 95837F

 7C6A66

 62524E

 4A3B37

 342522

 1F110B

 000000

 E8D4CF

 E8D4CF

 E8C1B8

 E8E7E6

 E8AFA1

 E8F9FD

 E89C89

 E8FFFF

 E88A72

 E8775B

 E86544

 E8522D

 E84015

 E82E00

Harmonies

Analogous

The Analogous color harmony consists of three colors that are next to each other on the color wheel.



E8D3D6



E8D4CF



E4D6CA

Triad

The Triadic color harmony groups three colors that are evenly spaced from another and form a triangle on the color wheel.



E8D4CF



CCDCD3



D3D8E7

Complementary

The Complementary color scheme is a pair of colors which are on the opposite of each other on the color wheel.



E8D4CF



CFE3E8

Split Complementary

Split-complementary colors differ from the complementary color scheme. The scheme consists of three colors, the original color and two neighbors of the complement color.



CBD4E6



E8D4CF



C7DDDA

Square

The Square scheme is like the rectangle color scheme, but the four colors are evenly spaced on the color wheel.



E8D4CF



D3DBCC



C7DCE1



DDD6E4

Rectangle

The Rectangle color scheme consists of four colors that form a rectangle on the color wheel.



E8D4CF



DFD7C9



C7DCE1



D0D9E7

Sweetspot

The Sweet Spot groups the original color and five complimentary colors.



E8D4CF



FFF9F7



E8CFE3



807B7A



000000



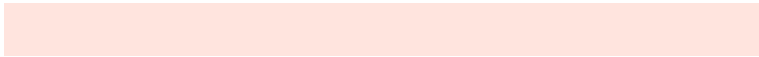
808080

Same Dimension

The Same Dimension uses a secret algorithm to generate beautiful new colors.



E8D4CF



FFE4DE



E8E1CF



736A67



B32400



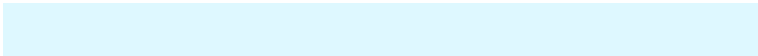
330A00

Inverse Universe

The Inverse Universe completely reimagines the original color for something new.



CFE3E8



DEF8FF



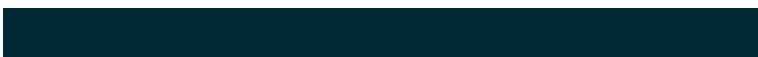
CFD6E8



677073



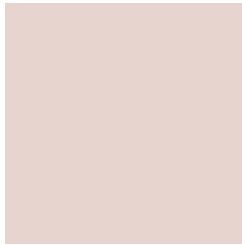
008FB3



002933

Previews

White Background



This preview shows how the Hex color E8D4CF looks on a white background.

Color Contrast Check

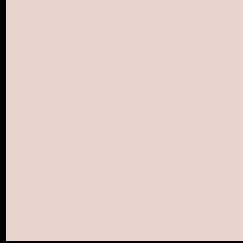
Large Text (above 18pt) WCAG AA × Fail

Any Text WCAG AA × Fail

Large Text (above 18pt) WCAG AAA × Fail

Any Text WCAG AAA × Fail

Black Background



This preview shows how the Hex color E8D4CF looks on a black background.

Color Contrast Check

Large Text (above 18pt) WCAG AA ✓ Pass

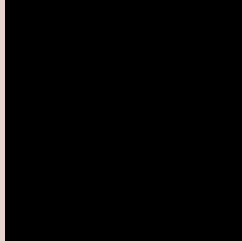
Any Text WCAG AA ✓ Pass

Large Text (above 18pt) WCAG AAA ✓ Pass

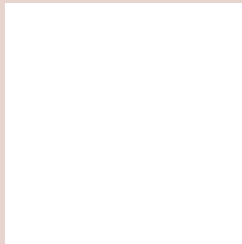
Any Text WCAG AAA ✓ Pass

If you want to check with other color combinations, try the [Color Contrast Checker](#).

Hex E8D4CF Background



This preview shows how black text looks on a background with the Hex color E8D4CF.

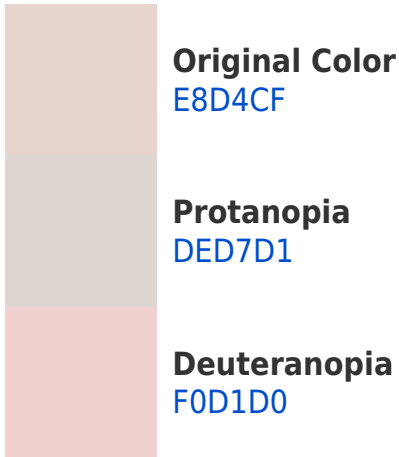


This preview shows how white text looks on a background with the Hex color E8D4CF.

Color Blindness Simulation

Color vision deficiency is a very complex topic, and I could not describe the different causes any better than Wikipedia does, so if you want to learn more, you should check out their [article about color blindness](#).

Dichromacy





Tritanopia
EBD1E2

Trichromacy



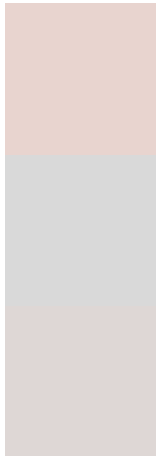
Original Color
E8D4CF

Protanomaly
E2D6D0

Deuteranomaly
EDD2D0

Tritanomaly
EAD2DB

Monochromacy



Original Color
E8D4CF

Achromatopsia
D9D9D9

Achromatomaly
DED7D5

CSS Examples

Text

The CSS property to change the color of the text to Hex E8D4CF is called "color". The color property can be set on classes, ids or directly on the HTML element.

This example shows how text in the color #E8D4CF looks like.

```
.text, #text, p{  
    color:#E8D4CF  
}
```

If you want to add a text shadow in that color use the text-shadow property, you can generate a text shadow directly with our [CSS Text Shadow Generator](#).

Here you see how black text with a 4 pixel #E8D4CF colored shadow looks like.

```
.shadow{ text-shadow: 4px 4px 2px #E8D4CF
}
```

Border

The CSS property to change the border of an element to Hex E8D4CF is called "border". The border property can be set on classes, ids or directly on the HTML element.

This example shows the color as border, it can be applied via the CSS property "border" or "border-color".

```
.border, #border, table{ border:4px solid
#E8D4CF }
```

If only the border color should be changed use the property `border-color`.

```
.border{ border-color:#E8D4CF }
```

If you want to add a box shadow in that color use:

Here you see how a box with a 4 pixel #E8D4CF colored shadow looks like.

```
.boxshadow{ -moz-box-shadow:4px 4px 4px  
4px #E8D4CF; -webkit-box-shadow:4px 4px  
4px 4px #E8D4CF; box-shadow:4px 4px 4px  
4px #E8D4CF }
```

Background

The CSS property to change the background color of an element to Hex E8D4CF is called "background". The background property can be set on classes, ids or directly on the HTML element.

```
.background, #background, body{  
background:#E8D4CF }
```

If only the background color should be changed can be used:

```
.background{ background-color:#E8D4CF }
```

This example shows the color as background, it is applied via the CSS property "background".

To optimize and compress your CSS code, you can use our [online CSS compressor and optimizer](#) based on csstidy. If you want to create a linear or radial gradient as background or border, check our [CSS Gradient Generator](#).

Hey! You found this booklet interesting? Support Converting Colors with the new Membership Option!

The pro membership hides all ads, plus gives you double the colors in the color bucket, and more awesome pro features!

[Learn more, Memberships starting at \\$2.50/m!](#)

**Follow me
on Twitter!**

@ConvertingColor