

Converting Colors

Hex(E8D8D4)

Have a look what the booklet for
Hex(E8D8D4) contains.

Hex(E8D8D4)	3
<i>Conversions</i>	4
<i>Details</i>	6
<i>Harmonies</i>	11
<i>Previews</i>	23
<i>Color Blindness Simulation</i>	26
<i>CSS Examples</i>	29

Color

Hex(E8D8D4)

Conversions

Conversions Part 1

Format	Color
Hex	E8D8D4
RGB	232, 216, 212
RGB Percent	91%, 85%, 83%
CMY	0.0902, 0.1529, 0.1686
CMYK	0.00, 0.07, 0.09, 0.09
HSL	12°, 30%, 87%
HSV	12°, 9%, 91%
XYZ	69.7182, 71.0210, 72.3212
YIQ	220.3280, 10.8200, 2.1480

Conversions

Conversions Part 2

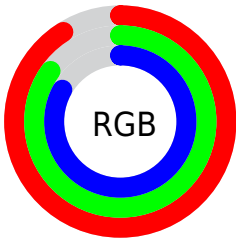
Format	Color
RYB	232, 217, 212
Decimal	15259860
CIELab	87.50, 4.83, 3.94
CIELCh	87, 6.230, 39.216
Yxy	71.0210, 0.3272, 0.3333
Android (android.graphics.Color)	4293449940 (0xFFE8D8D4)
YUV	220.3280, -4.1057, 10.2363
Hunter-Lab	84.2740, 0.1902, 8.1110

Details

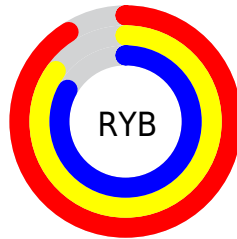
The Hex color **E8D8D4** is a light color, and the websafe version is hex **CCCCCC**. A complement of this color would be **D4E4E8**, and the grayscale version is **DCDCDC**.

A 20% lighter version of the original color is **FFFFFF**, and **B0A19D** is the 20% darker color. If you saturate the color by 10%, you get **E8C5BD**, and if you desaturate by 10%, it is **E8EBEB**.

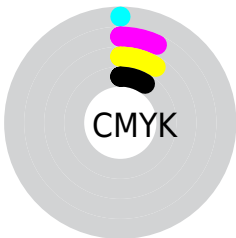
Distribution



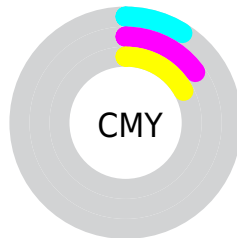
- Red (91%)
- Green (85%)
- Blue (83%)



- Red (91%)
- Yellow (85%)
- Blue (83%)



- Cyan (0%)
- Magenta (7%)
- Yellow (9%)
- Black (9%)



- Cyan (9%)
- Magenta (15%)
- Yellow (17%)

Brightness & Saturation Gradients

These gradients show how the Hex color E8D8D4 changes by changing the brightness by 10 percent. The first figure shows a shift by +10% for each color and the second figure -10%.

Similar to the brightness gradients but the following saturation gradients show a change of the Hex color E8D8D4 by changing the saturation by 10% instead.

 E8D8D4

FFFFFF

 E8D8D4

 CCBCB8

 B0A19D

 968783

 7C6E6A

 635552

 4B3E3B

 342825

 1F1411

 000000

 E8D8D4

 E8D8D4

 E8C5BD

 E8EBEB

 E8B3A6

 E8FDFF

 E8A08E

 E8FFFF

 E88E77

 E87B60

 E86949

 E85632

 E8441A

 E83103

Harmonies

Analogous

The Analogous color harmony consists of three colors that are next to each other on the color wheel.



E8D7DA



E8D8D4



E4D9D0

Triad

The Triadic color harmony groups three colors that are evenly spaced from another and form a triangle on the color wheel.



E8D8D4



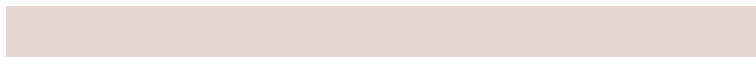
D1DFD7



D8DBE7

Complementary

The Complementary color scheme is a pair of colors which are on the opposite of each other on the color wheel.



E8D8D4



D4E4E8

Split Complementary

Split-complementary colors differ from the complementary color scheme. The scheme consists of three colors, the original color and two neighbors of the complement color.



D1DDE6



E8D8D4



CEDFDD

Square

The Square scheme is like the rectangle color scheme, but the four colors are evenly spaced on the color wheel.



E8D8D4



D8DDD2



CEDEE2



DFD9E4

Rectangle

The Rectangle color scheme consists of four colors that form a rectangle on the color wheel.



E8D8D4



E1DBD0



CEDEE2



D5DCE7

Sweetspot

The Sweet Spot groups the original color and five complimentary colors.



E8D8D4



FFF9F7



E8D4E4



807B7A



000000



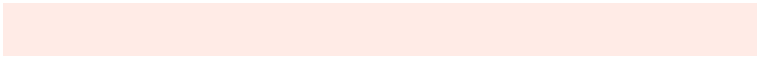
808080

Same Dimension

The Same Dimension uses a secret algorithm to generate beautiful new colors.



E8D8D4



FFEBE6



E8E2D4



736A67



B32400



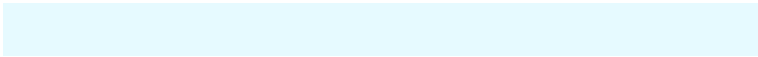
330A00

Inverse Universe

The Inverse Universe completely reimagines the original color for something new.



D4E4E8



E6FAFF



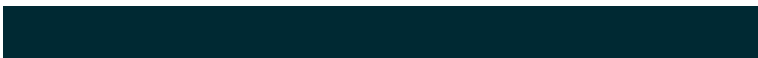
D4DAE8



677073



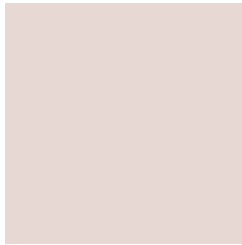
008FB3



002933

Previews

White Background



This preview shows how the Hex color E8D8D4 looks on a white background.

Color Contrast Check

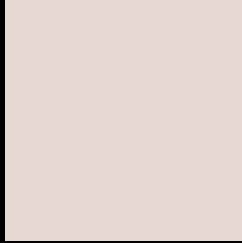
Large Text (above 18pt) WCAG AA × Fail

Any Text WCAG AA × Fail

Large Text (above 18pt) WCAG AAA × Fail

Any Text WCAG AAA × Fail

Black Background



This preview shows how the Hex color E8D8D4 looks on a black background.

Color Contrast Check

Large Text (above 18pt) WCAG AA ✓ Pass

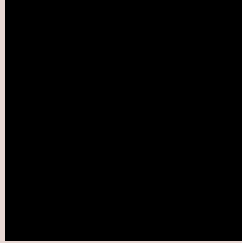
Any Text WCAG AA ✓ Pass

Large Text (above 18pt) WCAG AAA ✓ Pass

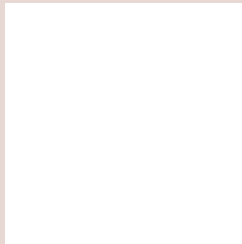
Any Text WCAG AAA ✓ Pass

If you want to check with other color combinations, try the [Color Contrast Checker](#).

Hex E8D8D4 Background



This preview shows how black text looks on a background with the Hex color E8D8D4.

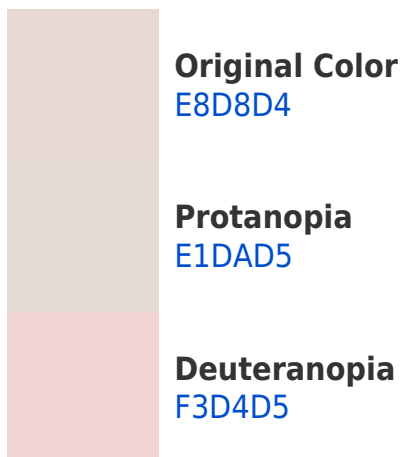


This preview shows how white text looks on a background with the Hex color E8D8D4.

Color Blindness Simulation

Color vision deficiency is a very complex topic, and I could not describe the different causes any better than Wikipedia does, so if you want to learn more, you should check out their [article about color blindness](#).

Dichromacy





Tritanopia
EBD5E6

Trichromacy



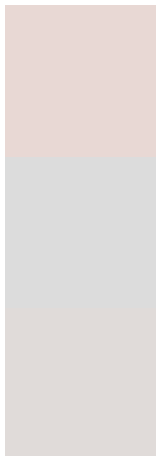
Original Color
E8D8D4

Protanomaly
E4D9D5

Deuteranomaly
EFD5D5

Tritanomaly
EAD6DF

Monochromacy



Original Color
E8D8D4

Achromatopsia
DCDCDC

Achromatomaly
E0DBD9

CSS Examples

Text

The CSS property to change the color of the text to Hex E8D8D4 is called "color". The color property can be set on classes, ids or directly on the HTML element.

This example shows how text in the color #E8D8D4 looks like.

```
.text, #text, p{  
    color:#E8D8D4  
}
```

If you want to add a text shadow in that color use the text-shadow property, you can generate a text shadow directly with our [CSS Text Shadow Generator](#).

Here you see how black text with a 4 pixel #E8D8D4 colored shadow looks like.

```
.shadow{ text-shadow: 4px 4px 2px #E8D8D4
}
```

Border

The CSS property to change the border of an element to Hex E8D8D4 is called "border". The border property can be set on classes, ids or directly on the HTML element.

This example shows the color as border, it can be applied via the CSS property "border" or "border-color".

```
.border, #border, table{ border:4px solid
#E8D8D4 }
```

If only the border color should be changed use the property `border-color`.

```
.border{ border-color:#E8D8D4 }
```

If you want to add a box shadow in that color use:

Here you see how a box with a 4 pixel #E8D8D4 colored shadow looks like.

```
.boxshadow{ -moz-box-shadow:4px 4px 4px  
4px #E8D8D4; -webkit-box-shadow:4px 4px  
4px 4px #E8D8D4; box-shadow:4px 4px 4px  
4px #E8D8D4 }
```

Background

The CSS property to change the background color of an element to Hex E8D8D4 is called "background". The background property can be set on classes, ids or directly on the HTML element.

```
.background, #background, body{  
background:#E8D8D4 }
```

If only the background color should be changed can be used:

```
.background{ background-color:#E8D8D4 }
```

This example shows the color as background, it is applied via the CSS property "background".

To optimize and compress your CSS code, you can use our [online CSS compressor and optimizer](#) based on csstidy. If you want to create a linear or radial gradient as background or border, check our [CSS Gradient Generator](#).

Hey! You found this booklet interesting? Support Converting Colors with the new Membership Option!

The pro membership hides all ads, plus gives you double the colors in the color bucket, and more awesome pro features!

[Learn more, Memberships starting at \\$2.50/m!](#)

**Follow me
on Twitter!**

@ConvertingColor