

Converting Colors

Hex(E92968)

Have a look what the booklet for
Hex(E92968) contains.

Hex(E92968)	3
<i>Conversions</i>	4
<i>Details</i>	6
<i>Harmonies</i>	11
<i>Previews</i>	23
<i>Color Blindness Simulation</i>	26
<i>CSS Examples</i>	29

Color

Hex(E92968)

Conversions

Conversions Part 1

Format	Color
Hex	E92968
RGB	233, 41, 104
RGB Percent	91%, 16%, 41%
CMY	0.0863, 0.8392, 0.5922
CMYK	0.00, 0.82, 0.55, 0.09
HSL	340°, 81%, 54%
HSV	340°, 82%, 91%
XYZ	36.8959, 19.9090, 14.9949
YIQ	105.5900, 94.2090, 60.2970

Conversions

Conversions Part 2

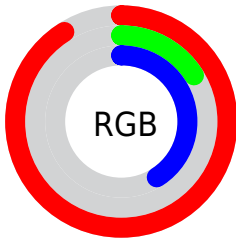
Format	Color
R_{YB}	233, 41, 104
Decimal	15280488
CIE _{Lab}	51.73, 72.78, 13.50
CIE _{LCh}	52, 74.024, 10.509
Yxy	19.9090, 0.5139, 0.2773
Android (android.graphics.Color)	4293470568 (0xFFE92968)
YUV	105.5900, -0.7839, 111.7386
Hunter-Lab	44.6195, 69.5177, 11.3086

Details

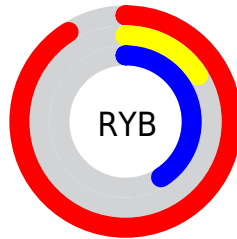
The Hex color **E92968** is a dark color, and the websafe version is hex **FF3366**. The color can be described as dark washed rose. A complement of this color would be **29E9AA**, and the grayscale version is **6A6A6A**.

A 20% lighter version of the original color is **FF6C9B**, and **AA003A** is the 20% darker color. If you saturate the color by 10%, you get **E91258**, and if you desaturate by 10%, it is **E94078**.

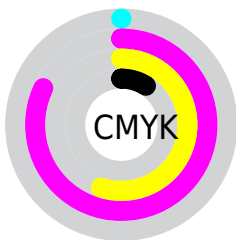
Distribution



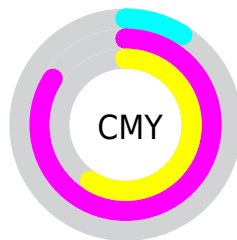
- Red (91%)
- Green (16%)
- Blue (41%)



- Red (91%)
- Yellow (16%)
- Blue (41%)



- Cyan (0%)
- Magenta (82%)
- Yellow (55%)
- Black (9%)



- Cyan (9%)
- Magenta (84%)
- Yellow (59%)

Brightness & Saturation Gradients

These gradients show how the Hex color E92968 changes by changing the brightness by 10 percent. The first figure shows a shift by +10% for each color and the second figure -10%.

Similar to the brightness gradients but the following saturation gradients show a change of the Hex color E92968 by changing the saturation by 10% instead.

 E92968

 E92968

FFFFFF

 C90050

 FF6C9B

 AA003A

 FF8AB5

 8B0025

 FFA8D1

 6D0010

 FFC5ED

 4F0003

 FFE3FF

 300002

 000000

 E92968

 E92968

 E91258

 E94078

 E9004C

 E95887

 E96F97

 E986A7

 E99EB6

 E9B5C6

 E9CCD6

 E9E3E5

 E9FBF5

Harmonies

Analogous

The Analogous color harmony consists of three colors that are next to each other on the color wheel.



D539A7



E92968



DC482B

Triad

The Triadic color harmony groups three colors that are evenly spaced from another and form a triangle on the color wheel.



E92968



368D00



008EF4

Complementary

The Complementary color scheme is a pair of colors which are on the opposite of each other on the color wheel.



E92968



29E9AA

Split Complementary

Split-complementary colors differ from the complementary color scheme. The scheme consists of three colors, the original color and two neighbors of the complement color.



0095CD



E92968



00944E

Square

The Square scheme is like the rectangle color scheme, but the four colors are evenly spaced on the color wheel.



E92968



818000



009791



007CF9

Rectangle

The Rectangle color scheme consists of four colors that form a rectangle on the color wheel.



E92968



C55F00



009791



0091EA

Sweetspot

The Sweet Spot groups the original color and five complimentary colors.



E92968



FFBFD4



A929E9



805966



000000



808080

Same Dimension

The Same Dimension uses a secret algorithm to generate beautiful new colors.



E92968



FF0355



E94929



756A6D



B5003B



360012

Inverse Universe

The Inverse Universe completely reimagines the original color for something new.



E92968



FF0355



29C9E9



756A6D



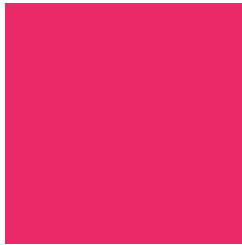
B5003B



360012

Previews

White Background



This preview shows how the Hex color E92968 looks on a white background.

Color Contrast Check

Large Text (above 18pt) WCAG AA ✓ Pass

Any Text WCAG AA × Fail

Large Text (above 18pt) WCAG AAA × Fail

Any Text WCAG AAA × Fail

Black Background



Color Contrast Check

Large Text (above 18pt) WCAG AA ✓ Pass

Any Text WCAG AA ✓ Pass

Large Text (above 18pt) WCAG AAA ✓ Pass

Any Text WCAG AAA × Fail

If you want to check with other color combinations, try the [Color Contrast Checker](#).

Hex E92968 Background



This preview shows how black text looks on a background with the Hex color E92968.

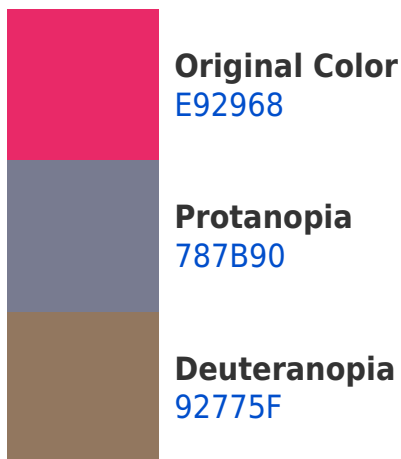


This preview shows how white text looks on a background with the Hex color E92968.

Color Blindness Simulation

Color vision deficiency is a very complex topic, and I could not describe the different causes any better than Wikipedia does, so if you want to learn more, you should check out their [article about color blindness](#).

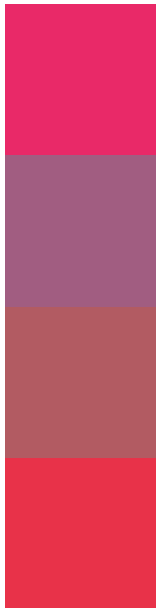
Dichromacy





Tritanopia
E73738

Trichromacy



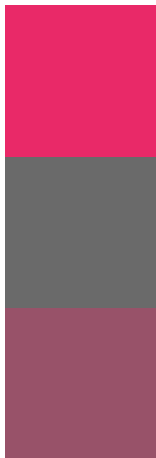
Original Color
E92968

Protanomaly
A15D81

Deuteranomaly
B25B62

Tritanomaly
E83249

Monochromacy



Original Color
E92968

Achromatopsia
6A6A6A

Achromatomaly
985269

CSS Examples

Text

The CSS property to change the color of the text to Hex E92968 is called "color". The color property can be set on classes, ids or directly on the HTML element.

This example shows how text in the color #E92968 looks like.

```
.text, #text, p{  
    color:#E92968  
}
```

If you want to add a text shadow in that color use the text-shadow property, you can generate a text shadow directly with our [CSS Text Shadow Generator](#).

Here you see how black text with a 4 pixel #E92968 colored shadow looks like.

```
.shadow{ text-shadow: 4px 4px 2px #E92968
}
```

Border

The CSS property to change the border of an element to Hex E92968 is called "border". The border property can be set on classes, ids or directly on the HTML element.

This example shows the color as border, it can be applied via the CSS property "border" or "border-color".

```
.border, #border, table{ border:4px solid
#E92968 }
```

If only the border color should be changed use the property `border-color`.

```
.border{ border-color:#E92968 }
```

If you want to add a box shadow in that color use:

Here you see how a box with a 4 pixel #E92968 colored shadow looks like.

```
.boxshadow{ -moz-box-shadow:4px 4px 4px  
4px #E92968; -webkit-box-shadow:4px 4px  
4px 4px #E92968; box-shadow:4px 4px 4px  
4px #E92968 }
```

Background

The CSS property to change the background color of an element to Hex E92968 is called "background". The background property can be set on classes, ids or directly on the HTML element.

```
.background, #background, body{  
background:#E92968 }
```

If only the background color should be changed can be used:

```
.background{ background-color:#E92968 }
```

This example shows the color as background, it is applied via the CSS property "background".

To optimize and compress your CSS code, you can use our [online CSS compressor and optimizer](#) based on csstidy. If you want to create a linear or radial gradient as background or border, check our [CSS Gradient Generator](#).

Hey! You found this booklet interesting? Support Converting Colors with the new Membership Option!

The pro membership hides all ads, plus gives you double the colors in the color bucket, and more awesome pro features!

[Learn more, Memberships starting at \\$2.50/m!](#)

**Follow me
on Twitter!**

@ConvertingColor