

Converting Colors

Hex(E92F6A)

Have a look what the booklet for
Hex(E92F6A) contains.

Hex(E92F6A)	3
<i>Conversions</i>	4
<i>Details</i>	6
<i>Harmonies</i>	11
<i>Previews</i>	23
<i>Color Blindness Simulation</i>	26
<i>CSS Examples</i>	29

Color

Hex(E92F6A)

Conversions

Conversions Part 1

Format	Color
Hex	E92F6A
RGB	233, 47, 106
RGB Percent	91%, 18%, 42%
CMY	0.0863, 0.8157, 0.5843
CMYK	0.00, 0.80, 0.55, 0.09
HSL	341°, 81%, 55%
HSV	341°, 80%, 91%
XYZ	37.2223, 20.3973, 15.6109
YIQ	109.3400, 91.9170, 57.7810

Conversions

Conversions Part 2

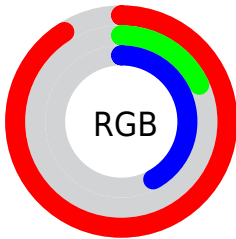
Format	Color
R_{YB}	233, 47, 106
Decimal	15282026
CIE _{Lab}	52.28, 71.49, 13.05
CIE _{LCh}	52, 72.669, 10.348
Yxy	20.3973, 0.5083, 0.2785
Android (android.graphics.Color)	4293472106 (0xFFE92F6A)
YUV	109.3400, -1.6466, 108.4498
Hunter-Lab	45.1633, 68.0786, 11.1205

Details

The Hex color **E92F6A** is a dark color, and the websafe version is hex **FF3366**. The color can be described as dark washed rose. A complement of this color would be **2FE9AE**, and the grayscale version is **6D6D6D**.

A 20% lighter version of the original color is **FF709D**, and **AA003B** is the 20% darker color. If you saturate the color by 10%, you get **E9185A**, and if you desaturate by 10%, it is **E9467A**.

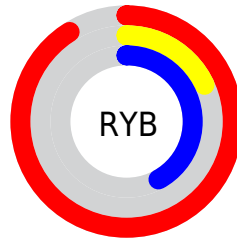
Distribution



Red (91%)

Green (18%)

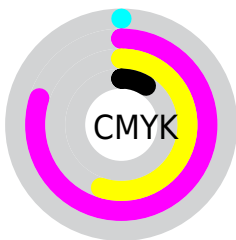
Blue (42%)



Red (91%)

Yellow (18%)

Blue (42%)

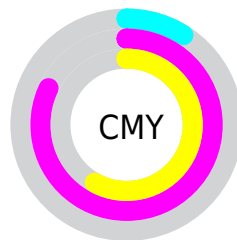


Cyan (0%)

Magenta (80%)

Yellow (55%)

Black (9%)



Cyan (9%)

Magenta (82%)

Yellow (58%)

Brightness & Saturation Gradients

These gradients show how the Hex color E92F6A changes by changing the brightness by 10 percent. The first figure shows a shift by +10% for each color and the second figure -10%.

Similar to the brightness gradients but the following saturation gradients show a change of the Hex color E92F6A by changing the saturation by 10% instead.

 E92F6A

 E92F6A

FFFFFF

 CA0052

 FF709D

 AA003B

 FF8DB8

 8C0026

 FFABD3

 6D0012

 FFC8F0

 500003

 FFE6FF

 310002

 000000

 E92F6A

 E92F6A

 E9185A

 E9467A

 E9004A

 E95E8A

 E9759A

 E98CAA

 E9A3BA

 E9BBC9

 E9D2D9

 E9E9E9

 E9FFF9

Harmonies

Analogous

The Analogous color harmony consists of three colors that are next to each other on the color wheel.



D53DA8



E92F6A



DC4B2E

Triad

The Triadic color harmony groups three colors that are evenly spaced from another and form a triangle on the color wheel.



E92F6A



3A8F00



008FF3

Complementary

The Complementary color scheme is a pair of colors which are on the opposite of each other on the color wheel.



E92F6A



2FE9AE

Split Complementary

Split-complementary colors differ from the complementary color scheme. The scheme consists of three colors, the original color and two neighbors of the complement color.



0097CD



E92F6A



009550

Square

The Square scheme is like the rectangle color scheme, but the four colors are evenly spaced on the color wheel.



E92F6A



838100



009891



007EF9

Rectangle

The Rectangle color scheme consists of four colors that form a rectangle on the color wheel.



E92F6A



C66000



009891



0092E9

Sweetspot

The Sweet Spot groups the original color and five complimentary colors.



E92F6A



FFC2D5



AB2FE9



805B66



000000



808080

Same Dimension

The Same Dimension uses a secret algorithm to generate beautiful new colors.



E92F6A



FF0A58



E94E2F



756A6D



B50039



360011

Inverse Universe

The Inverse Universe completely reimagines the original color for something new.



E92F6A



FF0A58



2FCAE9



756A6D



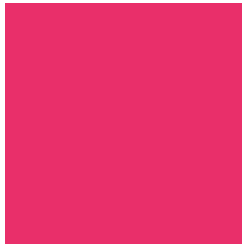
B50039



360011

Previews

White Background



This preview shows how the Hex color E92F6A looks on a white background.

Color Contrast Check

Large Text (above 18pt) WCAG AA ✓ Pass

Any Text WCAG AA × Fail

Large Text (above 18pt) WCAG AAA × Fail

Any Text WCAG AAA × Fail

Black Background



Color Contrast Check

Large Text (above 18pt) WCAG AA ✓ Pass

Any Text WCAG AA ✓ Pass

Large Text (above 18pt) WCAG AAA ✓ Pass

Any Text WCAG AAA × Fail

If you want to check with other color combinations, try the [Color Contrast Checker](#).

Hex E92F6A Background



This preview shows how black text looks on a background with the Hex color E92F6A.

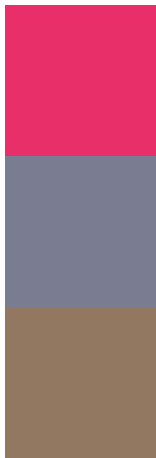


This preview shows how white text looks on a background with the Hex color E92F6A.

Color Blindness Simulation

Color vision deficiency is a very complex topic, and I could not describe the different causes any better than Wikipedia does, so if you want to learn more, you should check out their [article about color blindness](#).

Dichromacy



Original Color
E92F6A

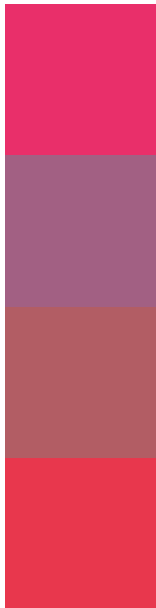
Protanopia
7A7C91

Deuteranopia
937861



Tritanopia
E73B3D

Trichromacy



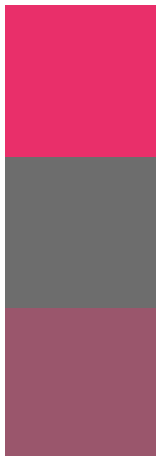
Original Color
E92F6A

Protanomaly
A26083

Deuteranomaly
B25D64

Tritanomaly
E8374D

Monochromacy



Original Color
E92F6A

Achromatopsia
6D6D6D

Achromatomaly
9A566C

CSS Examples

Text

The CSS property to change the color of the text to Hex E92F6A is called "color". The color property can be set on classes, ids or directly on the HTML element.

This example shows how text in the color #E92F6A looks like.

```
.text, #text, p{  
    color:#E92F6A  
}
```

If you want to add a text shadow in that color use the text-shadow property, you can generate a text shadow directly with our [CSS Text Shadow Generator](#).

Here you see how black text with a 4 pixel #E92F6A colored shadow looks like.

```
.shadow{ text-shadow: 4px 4px 2px #E92F6A
}
```

Border

The CSS property to change the border of an element to Hex E92F6A is called "border". The border property can be set on classes, ids or directly on the HTML element.

This example shows the color as border, it can be applied via the CSS property "border" or "border-color".

```
.border, #border, table{ border:4px solid
#E92F6A }
```

If only the border color should be changed use the property `border-color`.

```
.border{ border-color:#E92F6A }
```

If you want to add a box shadow in that color use:

Here you see how a box with a 4 pixel #E92F6A colored shadow looks like.

```
.boxshadow{ -moz-box-shadow:4px 4px 4px  
4px #E92F6A; -webkit-box-shadow:4px 4px  
4px 4px #E92F6A; box-shadow:4px 4px 4px  
4px #E92F6A }
```

Background

The CSS property to change the background color of an element to Hex E92F6A is called "background". The background property can be set on classes, ids or directly on the HTML element.

```
.background, #background, body{  
background:#E92F6A }
```

If only the background color should be changed can be used:

```
.background{ background-color:#E92F6A }
```

This example shows the color as background, it is applied via the CSS property "background".

To optimize and compress your CSS code, you can use our [online CSS compressor and optimizer](#) based on csstidy. If you want to create a linear or radial gradient as background or border, check our [CSS Gradient Generator](#).

Hey! You found this booklet interesting? Support Converting Colors with the new Membership Option!

The pro membership hides all ads, plus gives you double the colors in the color bucket, and more awesome pro features!

[Learn more, Memberships starting at \\$2.50/m!](#)

**Follow me
on Twitter!**

@ConvertingColor