

Converting Colors

Hex(E93673)

Have a look what the booklet for
Hex(E93673) contains.

Hex(E93673)	3
<i>Conversions</i>	4
<i>Details</i>	6
<i>Harmonies</i>	11
<i>Previews</i>	23
<i>Color Blindness Simulation</i>	26
<i>CSS Examples</i>	29

Color

Hex(E93673)

Conversions

Conversions Part 1

Format	Color
Hex	E93673
RGB	233, 54, 115
RGB Percent	91%, 21%, 45%
CMY	0.0863, 0.7882, 0.5490
CMYK	0.00, 0.77, 0.51, 0.09
HSL	340°, 80%, 56%
HSV	340°, 77%, 91%
XYZ	38.0180, 21.1998, 18.3079
YIQ	114.4750, 87.1030, 56.9190

Conversions

Conversions Part 2

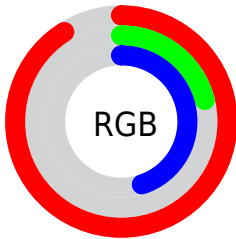
Format	Color
R_{YB}	233, 54, 115
Decimal	15283827
CIE _{Lab}	53.17, 70.26, 8.87
CIE _{LCh}	53, 70.822, 7.192
Yxy	21.1998, 0.4904, 0.2735
Android (android.graphics.Color)	4293473907 (0xFFE93673)
YUV	114.4750, 0.2588, 103.9464
Hunter-Lab	46.0432, 66.8121, 8.6552

Details

The Hex color **E93673** is a dark color, and the websafe version is hex **CC3366**. The color can be described as middle washed rose. A complement of this color would be **36E9AC**, and the grayscale version is **727272**.

A 20% lighter version of the original color is **FF75A7**, and **AB0043** is the 20% darker color. If you saturate the color by 10%, you get **E91F64**, and if you desaturate by 10%, it is **E94D82**.

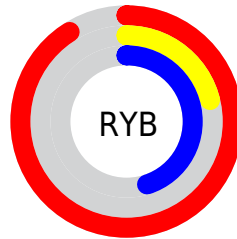
Distribution



Red (91%)

Green (21%)

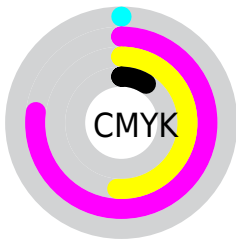
Blue (45%)



Red (91%)

Yellow (21%)

Blue (45%)

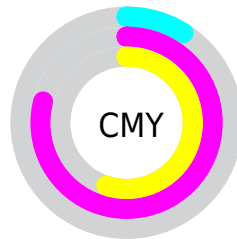


Cyan (0%)

Magenta (77%)

Yellow (51%)

Black (9%)



Cyan (9%)

Magenta (79%)

Yellow (55%)

Brightness & Saturation Gradients

These gradients show how the Hex color E93673 changes by changing the brightness by 10 percent. The first figure shows a shift by +10% for each color and the second figure -10%.

Similar to the brightness gradients but the following saturation gradients show a change of the Hex color E93673 by changing the saturation by 10% instead.

 E93673

 E93673

FFFFFF

 CA005B

 FF75A7

 AB0043

 FF92C2

 8C002E

 FFAFDE

 6E001A

 FFCDDA

 510003

 FFE0FF

 330002

 000000

 E93673

 E93673

 E91F64

 E94D82

 E90754

 E96592

 E9004F

 E97CA1

 E993B0

 E9ABC0

 E9C2CF

 E9D9DF

 E9F0EE

 E9FFFD

Harmonies

Analogous

The Analogous color harmony consists of three colors that are next to each other on the color wheel.



D246AF



E93673



E04C38

Triad

The Triadic color harmony groups three colors that are evenly spaced from another and form a triangle on the color wheel.



E93673



498F00



0092F0

Complementary

The Complementary color scheme is a pair of colors which are on the opposite of each other on the color wheel.



E93673



36E9AC

Split Complementary

Split-complementary colors differ from the complementary color scheme. The scheme consists of three colors, the original color and two neighbors of the complement color.



0099C8



E93673



00974D

Square

The Square scheme is like the rectangle color scheme, but the four colors are evenly spaced on the color wheel.



E93673



8C8100



009A8D



0082F9

Rectangle

The Rectangle color scheme consists of four colors that form a rectangle on the color wheel.



E93673



CB600C



009A8D



0095E5

Sweetspot

The Sweet Spot groups the original color and five complimentary colors.



E93673



FFC4D8



AA36E9



805C68



000000



808080

Same Dimension

The Same Dimension uses a secret algorithm to generate beautiful new colors.



E93673



FF1464



E95136



756A6E



B5003E



360012

Inverse Universe

The Inverse Universe completely reimagines the original color for something new.



E93673



FF1464



36CEE9



756A6E



B5003E



360012

Previews

White Background



This preview shows how the Hex color E93673 looks on a white background.

Color Contrast Check

Large Text (above 18pt) WCAG AA ✓ Pass

Any Text WCAG AA × Fail

Large Text (above 18pt) WCAG AAA × Fail

Any Text WCAG AAA × Fail

Black Background



This preview shows how the Hex color E93673 looks on a black background.

Color Contrast Check

Large Text (above 18pt) WCAG AA ✓ Pass

Any Text WCAG AA ✓ Pass

Large Text (above 18pt) WCAG AAA ✓ Pass

Any Text WCAG AAA × Fail

If you want to check with other color combinations, try the [Color Contrast Checker](#).

Hex E93673 Background



This preview shows how black text looks on a background with the Hex color E93673.

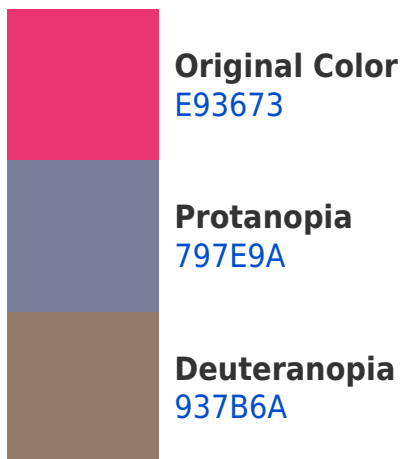



This preview shows how white text looks on a background with the Hex color E93673.

Color Blindness Simulation

Color vision deficiency is a very complex topic, and I could not describe the different causes any better than Wikipedia does, so if you want to learn more, you should check out their [article about color blindness](#).

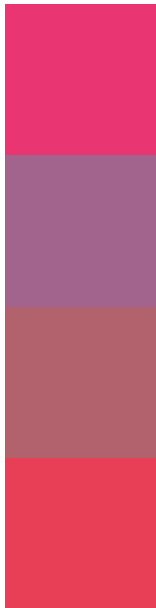
Dichromacy





Tritanopia
E74245

Trichromacy



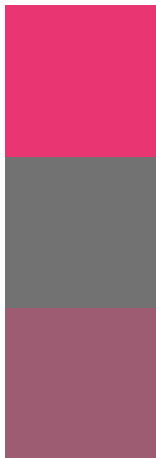
Original Color
E93673

Protanomaly
A2648C

Deuteranomaly
B2626D

Tritanomaly
E83E56

Monochromacy



Original Color
E93673

Achromatopsia
727272

Achromatomaly
9D5C72

CSS Examples

Text

The CSS property to change the color of the text to Hex E93673 is called "color". The color property can be set on classes, ids or directly on the HTML element.

This example shows how text in the color #E93673 looks like.

```
.text, #text, p{  
    color:#E93673  
}
```

If you want to add a text shadow in that color use the text-shadow property, you can generate a text shadow directly with our [CSS Text Shadow Generator](#).

Here you see how black text with a 4 pixel #E93673 colored shadow looks like.

```
.shadow{ text-shadow: 4px 4px 2px #E93673  
}
```

Border

The CSS property to change the border of an element to Hex E93673 is called "border". The border property can be set on classes, ids or directly on the HTML element.

This example shows the color as border, it can be applied via the CSS property "border" or "border-color".

```
.border, #border, table{ border:4px solid  
#E93673 }
```

If only the border color should be changed use the property `border-color`.

```
.border{ border-color:#E93673 }
```

If you want to add a box shadow in that color use:

Here you see how a box with a 4 pixel #E93673 colored shadow looks like.

```
.boxshadow{ -moz-box-shadow:4px 4px 4px  
4px #E93673; -webkit-box-shadow:4px 4px  
4px 4px #E93673; box-shadow:4px 4px 4px  
4px #E93673 }
```

Background

The CSS property to change the background color of an element to Hex E93673 is called "background". The background property can be set on classes, ids or directly on the HTML element.

```
.background, #background, body{  
background:#E93673 }
```

If only the background color should be changed can be used:

```
.background{ background-color:#E93673 }
```

This example shows the color as background, it is applied via the CSS property "background".

To optimize and compress your CSS code, you can use our [online CSS compressor and optimizer](#) based on csstidy. If you want to create a linear or radial gradient as background or border, check our [CSS Gradient Generator](#).

Hey! You found this booklet interesting? Support Converting Colors with the new Membership Option!

The pro membership hides all ads, plus gives you double the colors in the color bucket, and more awesome pro features!

[Learn more, Memberships starting at \\$2.50/m!](#)

**Follow me
on Twitter!**

@ConvertingColor