

Converting Colors

Hex(E95690)

Have a look what the booklet for
Hex(E95690) contains.

Hex(E95690)	3
<i>Conversions</i>	4
<i>Details</i>	6
<i>Harmonies</i>	11
<i>Previews</i>	23
<i>Color Blindness Simulation</i>	26
<i>CSS Examples</i>	29

Color

Hex(E95690)

Conversions

Conversions Part 1

Format	Color
Hex	E95690
RGB	233, 86, 144
RGB Percent	91%, 34%, 56%
CMY	0.0863, 0.6627, 0.4353
CMYK	0.00, 0.63, 0.38, 0.09
HSL	336°, 77%, 63%
HSV	336°, 63%, 91%
XYZ	41.9661, 25.9928, 29.1908
YIQ	136.5650, 68.9940, 49.2020

Conversions

Conversions Part 2

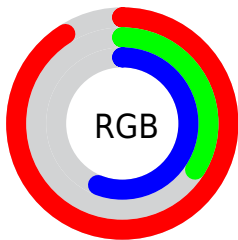
Format	Color
R _Y B	233, 86, 144
Decimal	15292048
CIE Lab	58.03, 61.64, -1.32
CIE LCh	58, 61.654, 358.771
Yxy	25.9928, 0.4320, 0.2676
Android (android.graphics.Color)	4293482128 (0xFFE95690)
YUV	136.5650, 3.6655, 84.5735
Hunter-Lab	50.9832, 57.7093, 1.7413

Details

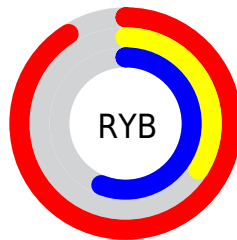
The Hex color **E95690** is a light color, and the websafe version is hex **FF6699**. The color can be described as light muted rose. A complement of this color would be **56E9AF**, and the grayscale version is **888888**.

A 20% lighter version of the original color is **FF8FC6**, and **AD125E** is the 20% darker color. If you saturate the color by 10%, you get **E93F82**, and if you desaturate by 10%, it is **E96D9E**.

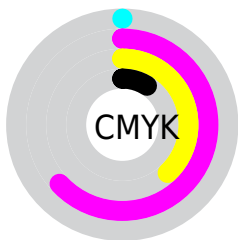
Distribution



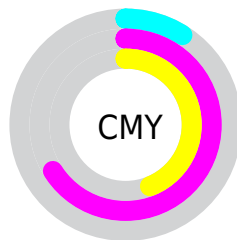
- Red (91%)
- Green (34%)
- Blue (56%)



- Red (91%)
- Yellow (34%)
- Blue (56%)



- Cyan (0%)
- Magenta (63%)
- Yellow (38%)
- Black (9%)



- Cyan (9%)
- Magenta (66%)
- Yellow (44%)

Brightness & Saturation Gradients

These gradients show how the Hex color E95690 changes by changing the brightness by 10 percent. The first figure shows a shift by +10% for each color and the second figure -10%.

Similar to the brightness gradients but the following saturation gradients show a change of the Hex color E95690 by changing the saturation by 10% instead.

 E95690

 E95690

FFFFFF

 CB3876

 FF8FC6

 AD125E

 FFABE2

 8F0046

 FFC8FE

 720030

 FFE6FF

 56001C

 3C0003

 160000

 000000

 E95690

 E95690

 E93F82

 E96D9E

 E92774

 E985AC

 E91066

 E99CBA

 E9005C

 E9B3C8

 E9CBD7

 E9E2E5

 E9F9F3

 E9FFFF

Harmonies

Analogous

The Analogous color harmony consists of three colors that are next to each other on the color wheel.



CA66C4



E95690



E95D5B

Triad

The Triadic color harmony groups three colors that are evenly spaced from another and form a triangle on the color wheel.



E95690



739720



009FE7

Complementary

The Complementary color scheme is a pair of colors which are on the opposite of each other on the color wheel.



E95690



56E9AF

Split Complementary

Split-complementary colors differ from the complementary color scheme. The scheme consists of three colors, the original color and two neighbors of the complement color.



00A4BE



E95690



13A050

Square

The Square scheme is like the rectangle color scheme, but the four colors are evenly spaced on the color wheel.



E95690



A88807



00A487



0092F8

Rectangle

The Rectangle color scheme consists of four colors that form a rectangle on the color wheel.



E95690



DB6B3B



00A487



00A1DC

Sweetspot

The Sweet Spot groups the original color and five complimentary colors.



E95690



FFCFE2



AE56E9



80626E



000000



808080

Same Dimension

The Same Dimension uses a secret algorithm to generate beautiful new colors.



E95690



FF3D8A



E96556



756A6E



B50047



360015

Inverse Universe

The Inverse Universe completely reimagines the original color for something new.



E95690



FF3D8A



56DAE9



756A6E



B50047



360015

Previews

White Background



This preview shows how the Hex color E95690 looks on a white background.

Color Contrast Check

Large Text (above 18pt) WCAG AA ✓ Pass

Any Text WCAG AA × Fail

Large Text (above 18pt) WCAG AAA × Fail

Any Text WCAG AAA × Fail

Black Background



Color Contrast Check

Large Text (above 18pt) WCAG AA ✓ Pass

Any Text WCAG AA ✓ Pass

Large Text (above 18pt) WCAG AAA ✓ Pass

Any Text WCAG AAA × Fail

If you want to check with other color combinations, try the [Color Contrast Checker](#).

Hex E95690 Background



This preview shows how black text looks on a background with the Hex color E95690.

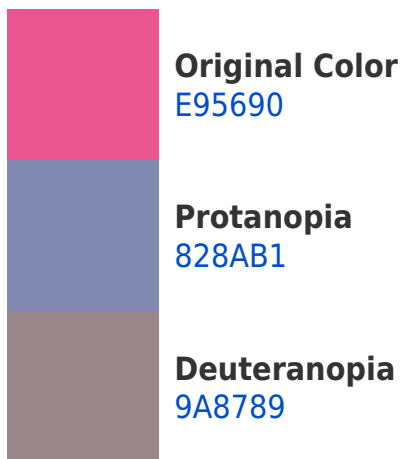


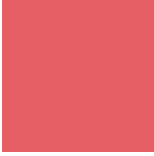
This preview shows how white text looks on a background with the Hex color E95690.

Color Blindness Simulation

Color vision deficiency is a very complex topic, and I could not describe the different causes any better than Wikipedia does, so if you want to learn more, you should check out their [article about color blindness](#).

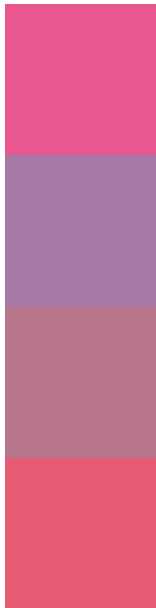
Dichromacy





Tritanopia
E65F65

Trichromacy



Original Color
E95690

Protanomaly
A777A5

Deuteranomaly
B7758C

Tritanomaly
E75C75

Monochromacy



Original Color
E95690

Achromatopsia
898989

Achromatomaly
AC768C

CSS Examples

Text

The CSS property to change the color of the text to Hex E95690 is called "color". The color property can be set on classes, ids or directly on the HTML element.

This example shows how text in the color #E95690 looks like.

```
.text, #text, p{  
    color:#E95690  
}
```

If you want to add a text shadow in that color use the text-shadow property, you can generate a text shadow directly with our [CSS Text Shadow Generator](#).

Here you see how black text with a 4 pixel #E95690 colored shadow looks like.

```
.shadow{ text-shadow: 4px 4px 2px #E95690
}
```

Border

The CSS property to change the border of an element to Hex E95690 is called "border". The border property can be set on classes, ids or directly on the HTML element.

This example shows the color as border, it can be applied via the CSS property "border" or "border-color".

```
.border, #border, table{ border:4px solid
#E95690 }
```

If only the border color should be changed use the property `border-color`.

```
.border{ border-color:#E95690 }
```

If you want to add a box shadow in that color use:

Here you see how a box with a 4 pixel #E95690 colored shadow looks like.

```
.boxshadow{ -moz-box-shadow:4px 4px 4px  
4px #E95690; -webkit-box-shadow:4px 4px  
4px 4px #E95690; box-shadow:4px 4px 4px  
4px #E95690 }
```

Background

The CSS property to change the background color of an element to Hex E95690 is called "background". The background property can be set on classes, ids or directly on the HTML element.

```
.background, #background, body{  
background:#E95690 }
```

If only the background color should be changed can be used:

```
.background{ background-color:#E95690 }
```

This example shows the color as background, it is applied via the CSS property "background".

To optimize and compress your CSS code, you can use our [online CSS compressor and optimizer](#) based on csstidy. If you want to create a linear or radial gradient as background or border, check our [CSS Gradient Generator](#).

Hey! You found this booklet interesting? Support Converting Colors with the new Membership Option!

The pro membership hides all ads, plus gives you double the colors in the color bucket, and more awesome pro features!

[Learn more, Memberships starting at \\$2.50/m!](#)

**Follow me
on Twitter!**

@ConvertingColor