

Converting Colors

Hex(E95D84)

Have a look what the booklet for
Hex(E95D84) contains.

Hex(E95D84)	3
<i>Conversions</i>	4
<i>Details</i>	6
<i>Harmonies</i>	11
<i>Previews</i>	23
<i>Color Blindness Simulation</i>	26
<i>CSS Examples</i>	29

Color

Hex(E95D84)

Conversions

Conversions Part 1

Format	Color
Hex	E95D84
RGB	233, 93, 132
RGB Percent	91%, 36%, 52%
CMY	0.0863, 0.6353, 0.4824
CMYK	0.00, 0.60, 0.43, 0.09
HSL	343°, 76%, 64%
HSV	343°, 60%, 91%
XYZ	41.6835, 26.8183, 24.8093
YIQ	139.3060, 70.9210, 41.8090

Conversions

Conversions Part 2

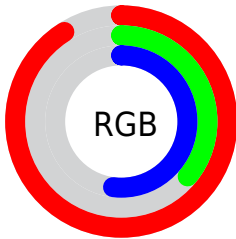
Format	Color
R _Y B	233, 93, 132
Decimal	15293828
CIE Lab	58.81, 57.44, 6.82
CIE LCh	59, 57.844, 6.771
Yxy	26.8183, 0.4467, 0.2874
Android (android.graphics.Color)	4293483908 (0xFFE95D84)
YUV	139.3060, -3.6019, 82.1696
Hunter-Lab	51.7864, 53.0507, 7.8464

Details

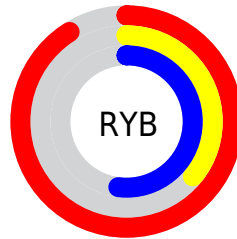
The Hex color **E95D84** is a light color, and the websafe version is hex **FF6699**. The color can be described as light muted rose. A complement of this color would be **5DE9C2**, and the grayscale version is **8B8B8B**.

A 20% lighter version of the original color is **FF95B9**, and **AD2153** is the 20% darker color. If you saturate the color by 10%, you get **E94673**, and if you desaturate by 10%, it is **E97495**.

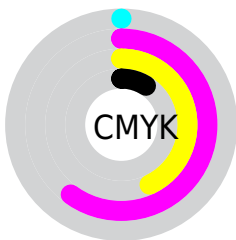
Distribution



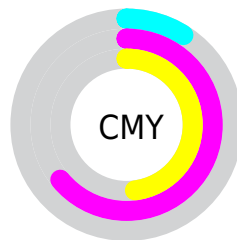
- Red (91%)
- Green (36%)
- Blue (52%)



- Red (91%)
- Yellow (36%)
- Blue (52%)



- Cyan (0%)
- Magenta (60%)
- Yellow (43%)
- Black (9%)



- Cyan (9%)
- Magenta (64%)
- Yellow (48%)

Brightness & Saturation Gradients

These gradients show how the Hex color E95D84 changes by changing the brightness by 10 percent. The first figure shows a shift by +10% for each color and the second figure -10%.

Similar to the brightness gradients but the following saturation gradients show a change of the Hex color E95D84 by changing the saturation by 10% instead.

 E95D84

 E95D84

FFFFFF

 CB416B

 FF95B9

 AD2153

 FFB1D4

 8F003C

 FFCEF1

 720027

 FFE8FF

 550012

 3B0002

 150000

 000000

 E95D84

 E95D84

 E94673

 E97495

 E92E62

 E98CA6

 E91752

 E9A3B6

 E90041

 E9BAC7

 E9D2D8

 E9E9E9

 E9FFFA

 E9FFFF

Harmonies

Analogous

The Analogous color harmony consists of three colors that are next to each other on the color wheel.



D466B7



E95D84



E36853

Triad

The Triadic color harmony groups three colors that are evenly spaced from another and form a triangle on the color wheel.



E95D84



679C36



009DEA

Complementary

The Complementary color scheme is a pair of colors which are on the opposite of each other on the color wheel.



E95D84



5DE9C2

Split Complementary

Split-complementary colors differ from the complementary color scheme. The scheme consists of three colors, the original color and two neighbors of the complement color.



00A4C9



E95D84



00A363

Square

The Square scheme is like the rectangle color scheme, but the four colors are evenly spaced on the color wheel.



E95D84



9D8F1B



00A698



2E8FF3

Rectangle

The Rectangle color scheme consists of four colors that form a rectangle on the color wheel.



E95D84



D27538



00A698



00A0E2

Sweetspot

The Sweet Spot groups the original color and five complimentary colors.



E95D84



FFD1DE



C15DE9



80636B



000000



808080

Same Dimension

The Same Dimension uses a secret algorithm to generate beautiful new colors.



E95D84



FF477B



E97B5D



756A6D



B50032



36000F

Inverse Universe

The Inverse Universe completely reimagines the original color for something new.



E95D84



FF477B



5DCBE9



756A6D



B50032



36000F

Previews

White Background



This preview shows how the Hex color E95D84 looks on a white background.

Color Contrast Check

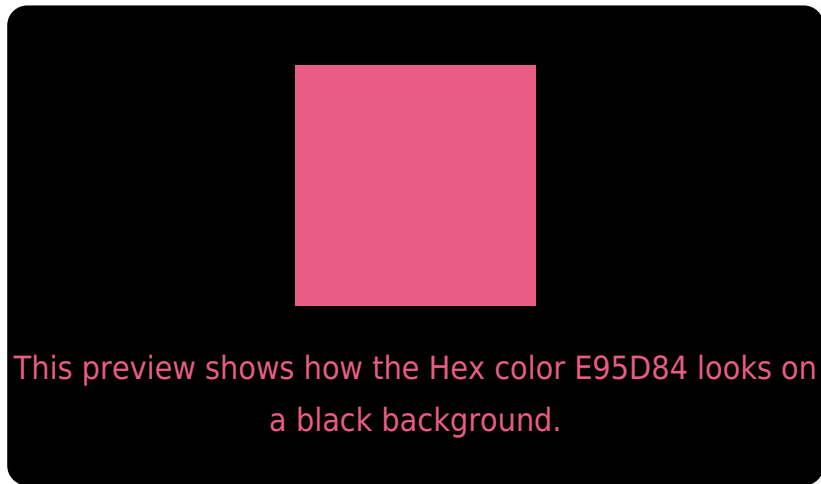
Large Text (above 18pt) WCAG AA ✓ Pass

Any Text WCAG AA × Fail

Large Text (above 18pt) WCAG AAA × Fail

Any Text WCAG AAA × Fail

Black Background



Color Contrast Check

Large Text (above 18pt) WCAG AA ✓ Pass

Any Text WCAG AA ✓ Pass

Large Text (above 18pt) WCAG AAA ✓ Pass

Any Text WCAG AAA × Fail

If you want to check with other color combinations, try the [Color Contrast Checker](#).

Hex E95D84 Background



This preview shows how black text looks on a background with the Hex color E95D84.

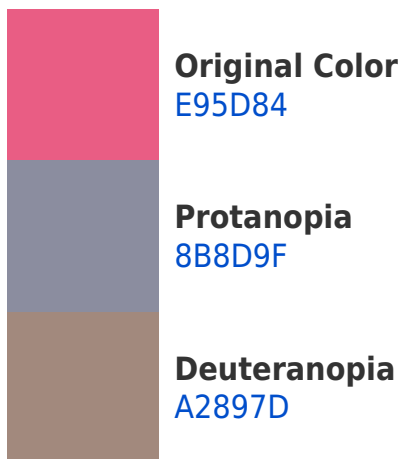


This preview shows how white text looks on a background with the Hex color E95D84.

Color Blindness Simulation

Color vision deficiency is a very complex topic, and I could not describe the different causes any better than Wikipedia does, so if you want to learn more, you should check out their [article about color blindness](#).

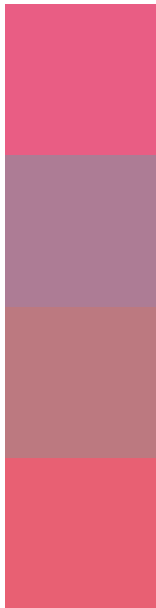
Dichromacy





Tritanopia
E76269

Trichromacy



Original Color
E95D84

Protanomaly
AD7C95

Deuteranomaly
BC7980

Tritanomaly
E86073

Monochromacy



Original Color
E95D84

Achromatopsia
8B8B8B

Achromatomaly
AD7A88

CSS Examples

Text

The CSS property to change the color of the text to Hex E95D84 is called "color". The color property can be set on classes, ids or directly on the HTML element.

This example shows how text in the color #E95D84 looks like.

```
.text, #text, p{  
    color:#E95D84  
}
```

If you want to add a text shadow in that color use the text-shadow property, you can generate a text shadow directly with our [CSS Text Shadow Generator](#).

Here you see how black text with a 4 pixel #E95D84 colored shadow looks like.

```
.shadow{ text-shadow: 4px 4px 2px #E95D84
}
```

Border

The CSS property to change the border of an element to Hex E95D84 is called "border". The border property can be set on classes, ids or directly on the HTML element.

This example shows the color as border, it can be applied via the CSS property "border" or "border-color".

```
.border, #border, table{ border:4px solid
#E95D84 }
```

If only the border color should be changed use the property `border-color`.

```
.border{ border-color:#E95D84 }
```

If you want to add a box shadow in that color use:

Here you see how a box with a 4 pixel #E95D84 colored shadow looks like.

```
.boxshadow{ -moz-box-shadow:4px 4px 4px  
4px #E95D84; -webkit-box-shadow:4px 4px  
4px 4px #E95D84; box-shadow:4px 4px 4px  
4px #E95D84 }
```

Background

The CSS property to change the background color of an element to Hex E95D84 is called "background". The background property can be set on classes, ids or directly on the HTML element.

```
.background, #background, body{  
background:#E95D84 }
```

If only the background color should be changed can be used:

```
.background{ background-color:#E95D84 }
```

This example shows the color as background, it is applied via the CSS property "background".

To optimize and compress your CSS code, you can use our [online CSS compressor and optimizer](#) based on csstidy. If you want to create a linear or radial gradient as background or border, check our [CSS Gradient Generator](#).

Hey! You found this booklet interesting? Support Converting Colors with the new Membership Option!

The pro membership hides all ads, plus gives you double the colors in the color bucket, and more awesome pro features!

[Learn more, Memberships starting at \\$2.50/m!](#)

**Follow me
on Twitter!**

@ConvertingColor