

Converting Colors

Hex(E96980)

Have a look what the booklet for
Hex(E96980) contains.

Hex(E96980)	3
<i>Conversions</i>	4
<i>Details</i>	6
<i>Harmonies</i>	11
<i>Previews</i>	23
<i>Color Blindness Simulation</i>	26
<i>CSS Examples</i>	29

Color

Hex(E96980)

Conversions

Conversions Part 1

Format	Color
Hex	E96980
RGB	233, 105, 128
RGB Percent	91%, 41%, 50%
CMY	0.0863, 0.5882, 0.4980
CMYK	0.00, 0.55, 0.45, 0.09
HSL	349°, 74%, 66%
HSV	349°, 55%, 91%
XYZ	42.5521, 28.9853, 23.7741
YIQ	145.8940, 68.9050, 34.2890

Conversions

Conversions Part 2

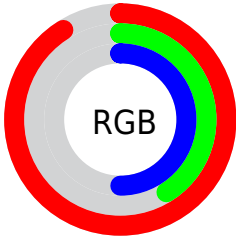
Format	Color
R_{YB}	233, 105, 128
Decimal	15296896
CIE _{Lab}	60.77, 51.60, 11.93
CIE _{LCh}	61, 52.961, 13.015
Yxy	28.9853, 0.4465, 0.3041
Android (android.graphics.Color)	4293486976 (0xFFE96980)
YUV	145.8940, -8.8217, 76.3920
Hunter-Lab	53.8380, 46.8652, 11.5050

Details

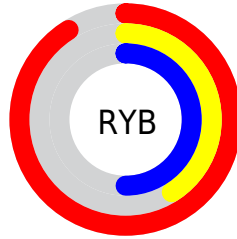
The Hex color **E96980** is a light color, and the websafe version is hex **CC6666**. A complement of this color would be **69E9D2**, and the grayscale version is **929292**.

A 20% lighter version of the original color is **FFA0B5**, and **AD324F** is the 20% darker color. If you saturate the color by 10%, you get **E9526D**, and if you desaturate by 10%, it is **E98093**.

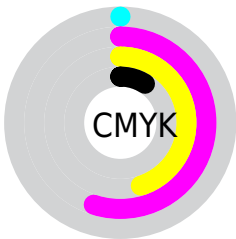
Distribution



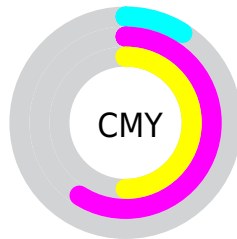
- Red (91%)
- Green (41%)
- Blue (50%)



- Red (91%)
- Yellow (41%)
- Blue (50%)



- Cyan (0%)
- Magenta (55%)
- Yellow (45%)
- Black (9%)



- Cyan (9%)
- Magenta (59%)
- Yellow (50%)

Brightness & Saturation Gradients

These gradients show how the Hex color E96980 changes by changing the brightness by 10 percent. The first figure shows a shift by +10% for each color and the second figure -10%.

Similar to the brightness gradients but the following saturation gradients show a change of the Hex color E96980 by changing the saturation by 10% instead.

 E96980

 E96980

FFFFFF

 CB4E67

 FFA0B5

 AD324F

 FFBCD0

 901038

 FFD9EC

 730023

 FFF6FF

 56000E

 3C0002

 180001

 000000

 E96980

 E96980

 E9526D

 E98093

 E93A5A

 E998A6

 E92347

 E9AFB9

 E90C34

 E9C6CC

 E9002A

 E9DEE0

 E9F5F3

 E9FFFF

Harmonies

Analogous

The Analogous color harmony consists of three colors that are next to each other on the color wheel.



DA6DAF



E96980



DF7555

Triad

The Triadic color harmony groups three colors that are evenly spaced from another and form a triangle on the color wheel.



E96980



65A24B



009FEC

Complementary

The Complementary color scheme is a pair of colors which are on the opposite of each other on the color wheel.



E96980



69E9D2

Split Complementary

Split-complementary colors differ from the complementary color scheme. The scheme consists of three colors, the original color and two neighbors of the complement color.



00A7D1



E96980



00A876

Square

The Square scheme is like the rectangle color scheme, but the four colors are evenly spaced on the color wheel.



E96980



999731



00AAA6



6391EE

Rectangle

The Rectangle color scheme consists of four colors that form a rectangle on the color wheel.



E96980



CE813E



00AAA6



00A2E5

Sweetspot

The Sweet Spot groups the original color and five complimentary colors.



E96980



FFD6DE



D269E9



80676C



000000



808080

Same Dimension

The Same Dimension uses a secret algorithm to generate beautiful new colors.



E96980



FF5775



E99269



756A6C



B50021



36000A

Inverse Universe

The Inverse Universe completely reimagines the original color for something new.



E96980



FF5775



69C0E9



756A6C



B50021



36000A

Previews

White Background



This preview shows how the Hex color E96980 looks on a white background.

Color Contrast Check

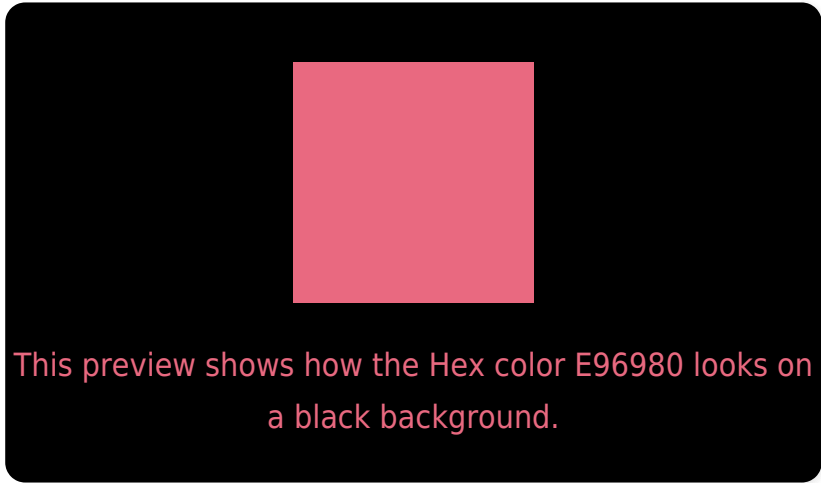
Large Text (above 18pt) WCAG AA ✓ Pass

Any Text WCAG AA × Fail

Large Text (above 18pt) WCAG AAA × Fail

Any Text WCAG AAA × Fail

Black Background



Color Contrast Check

Large Text (above 18pt) WCAG AA ✓ Pass

Any Text WCAG AA ✓ Pass

Large Text (above 18pt) WCAG AAA ✓ Pass

Any Text WCAG AAA × Fail

If you want to check with other color combinations, try the [Color Contrast Checker](#).

Hex E96980 Background



This preview shows how black text looks on a background with the Hex color E96980.

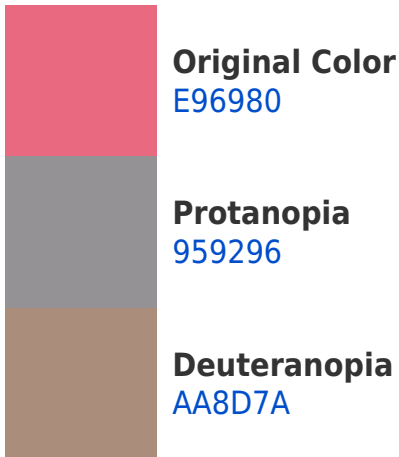



This preview shows how white text looks on a background with the Hex color E96980.

Color Blindness Simulation

Color vision deficiency is a very complex topic, and I could not describe the different causes any better than Wikipedia does, so if you want to learn more, you should check out their [article about color blindness](#).

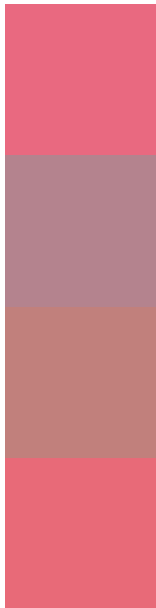
Dichromacy





Tritanopia
E86B73

Trichromacy



Original Color
E96980

Protanomaly
B4838E

Deuteranomaly
C1807C

Tritanomaly
E86A78

Monochromacy



Original Color
E96980

Achromatopsia
929292

Achromatomaly
B2838B

CSS Examples

Text

The CSS property to change the color of the text to Hex E96980 is called "color". The color property can be set on classes, ids or directly on the HTML element.

This example shows how text in the color #E96980 looks like.

```
.text, #text, p{  
    color:#E96980  
}
```

If you want to add a text shadow in that color use the text-shadow property, you can generate a text shadow directly with our [CSS Text Shadow Generator](#).

Here you see how black text with a 4 pixel #E96980 colored shadow looks like.

```
.shadow{ text-shadow: 4px 4px 2px #E96980
}
```

Border

The CSS property to change the border of an element to Hex E96980 is called "border". The border property can be set on classes, ids or directly on the HTML element.

This example shows the color as border, it can be applied via the CSS property "border" or "border-color".

```
.border, #border, table{ border:4px solid
#E96980 }
```

If only the border color should be changed use the property `border-color`.

```
.border{ border-color:#E96980 }
```

If you want to add a box shadow in that color use:

Here you see how a box with a 4 pixel #E96980 colored shadow looks like.

```
.boxshadow{ -moz-box-shadow:4px 4px 4px  
4px #E96980; -webkit-box-shadow:4px 4px  
4px 4px #E96980; box-shadow:4px 4px 4px  
4px #E96980 }
```

Background

The CSS property to change the background color of an element to Hex E96980 is called "background". The background property can be set on classes, ids or directly on the HTML element.

```
.background, #background, body{  
background:#E96980 }
```

If only the background color should be changed can be used:

```
.background{ background-color:#E96980 }
```

This example shows the color as background, it is applied via the CSS property "background".

To optimize and compress your CSS code, you can use our [online CSS compressor and optimizer](#) based on csstidy. If you want to create a linear or radial gradient as background or border, check our [CSS Gradient Generator](#).

Hey! You found this booklet interesting? Support Converting Colors with the new Membership Option!

The pro membership hides all ads, plus gives you double the colors in the color bucket, and more awesome pro features!

[Learn more, Memberships starting at \\$2.50/m!](#)

**Follow me
on Twitter!**

@ConvertingColor