

# Converting Colors

Hex(E97491)

Have a look what the booklet for  
Hex(E97491) contains.

|                                                |    |
|------------------------------------------------|----|
| <b>Hex(E97491)</b> .....                       | 3  |
| <b><i>Conversions</i></b> .....                | 4  |
| <b><i>Details</i></b> .....                    | 6  |
| <b><i>Harmonies</i></b> .....                  | 11 |
| <b><i>Previews</i></b> .....                   | 23 |
| <b><i>Color Blindness Simulation</i></b> ..... | 26 |
| <b><i>CSS Examples</i></b> .....               | 29 |

# **Color**

**Hex(E97491)**

# Conversions

## Conversions Part 1

| Format      | Color                      |
|-------------|----------------------------|
| Hex         | E97491                     |
| RGB         | 233, 116, 145              |
| RGB Percent | 91%, 45%, 57%              |
| CMY         | 0.0863, 0.5451, 0.4314     |
| CMYK        | 0.00, 0.50, 0.38, 0.09     |
| HSL         | 345°, 73%, 68%             |
| HSV         | 345°, 50%, 91%             |
| XYZ         | 44.9605, 31.8588, 30.5677  |
| YIQ         | 154.2890, 60.4230, 33.8230 |

# Conversions

## Conversions Part 2

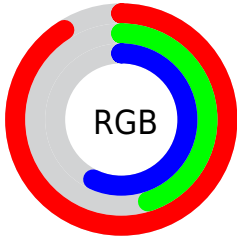
| <b>Format</b>                       | <b>Color</b>                  |
|-------------------------------------|-------------------------------|
| R <sub>Y</sub> B                    | 233, 116, 145                 |
| Decimal                             | 15299729                      |
| CIE Lab                             | 63.23, 48.09, 5.64            |
| CIE LCh                             | 63, 48.422, 6.687             |
| Yxy                                 | 31.8588, 0.4187,<br>0.2967    |
| Android<br>(android.graphics.Color) | 4293489809<br>(0xFFE97491)    |
| YUV                                 | 154.2890, -4.5795,<br>69.0295 |
| Hunter-Lab                          | 56.4436, 43.4092,<br>7.4012   |

# Details

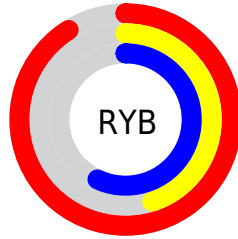
The Hex color **E97491** is a light color, and the websafe version is hex **FF6699**. A complement of this color would be **74E9CC**, and the grayscale version is **9A9A9A**.

A 20% lighter version of the original color is **FFABC7**, and **AE3F5F** is the 20% darker color. If you saturate the color by 10%, you get **E95D7F**, and if you desaturate by 10%, it is **E98BA3**.

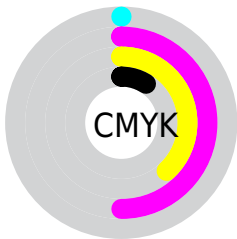
# Distribution



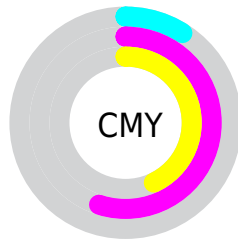
- Red (91%)
- Green (45%)
- Blue (57%)



- Red (91%)
- Yellow (45%)
- Blue (57%)



- Cyan (0%)
- Magenta (50%)
- Yellow (38%)
- Black (9%)



- Cyan (9%)
- Magenta (55%)
- Yellow (43%)

# Brightness & Saturation Gradients

These gradients show how the Hex color E97491 changes by changing the brightness by 10 percent. The first figure shows a shift by +10% for each color and the second figure -10%.

Similar to the brightness gradients but the following saturation gradients show a change of the Hex color E97491 by changing the saturation by 10% instead.



 E97491

 E97491

FFFFFF

 CB5977

 FFABC7

 AE3F5F

 FFC7E3

 912247

 FFE4FF

 750031

 59001C

 3F0001

 210001

 000000

 E97491

 E97491

 E95D7F

 E98BA3

 E9456E

 E9A3B4

 E92E5C

 E9BAC6

 E9174B

 E9D1D7

 E9003A

 E9E9E9

 E9FFFA

 E9FFFF

# Harmonies

## Analogous

The Analogous color harmony consists of three colors that are next to each other on the color wheel.



D67ABC



E97491



E57B68

# Triad

The Triadic color harmony groups three colors that are evenly spaced from another and form a triangle on the color wheel.



E97491



7BA551



00A7E8

# Complementary

The Complementary color scheme is a pair of colors which are on the opposite of each other on the color wheel.



E97491



74E9CC

# Split Complementary

Split-complementary colors differ from the complementary color scheme. The scheme consists of three colors, the original color and two neighbors of the complement color.



00ADCB



E97491



3DAC75

# Square

The Square scheme is like the rectangle color scheme, but the four colors are evenly spaced on the color wheel.



E97491



A99A40



00AFA2



5F9AEE

# Rectangle

The Rectangle color scheme consists of four colors that form a rectangle on the color wheel.



E97491



D78552



00AFA2



00A9E0



# Sweetspot

The Sweet Spot groups the original color and five complimentary colors.



E97491



FFD9E2



CC74E9



80696E



000000



808080



# Same Dimension

The Same Dimension uses a secret algorithm to generate beautiful new colors.



E97491



FF668C



E99174



756A6C



B5002D



36000D



# Inverse Universe

The Inverse Universe completely reimagines the original color for something new.



E97491



FF668C



74CCE9



756A6C



B5002D



36000D



# Previews

## White Background



This preview shows how the Hex color E97491 looks on a white background.

## Color Contrast Check

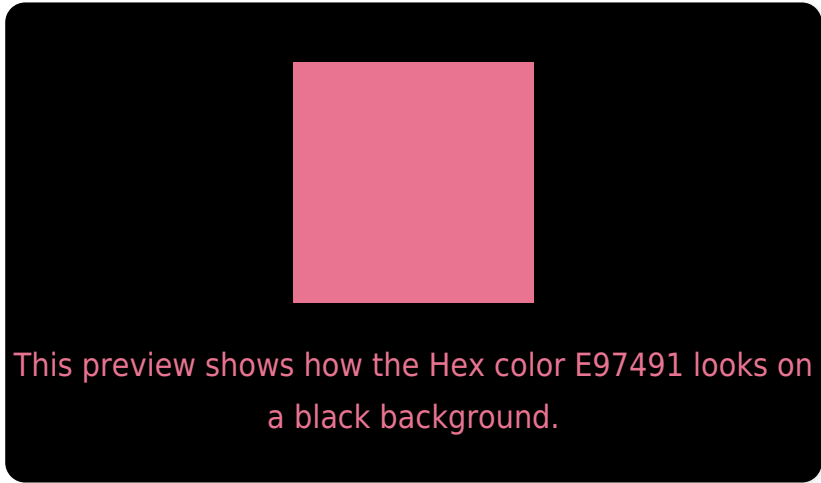
Large Text (above 18pt) WCAG AA × Fail

Any Text WCAG AA × Fail

Large Text (above 18pt) WCAG AAA × Fail

Any Text WCAG AAA × Fail

# Black Background



## Color Contrast Check

Large Text (above 18pt) WCAG AA ✓ Pass

Any Text WCAG AA ✓ Pass

Large Text (above 18pt) WCAG AAA ✓ Pass

Any Text WCAG AAA ✓ Pass

If you want to check with other color combinations, try the [Color Contrast Checker](#).



## Hex E97491 Background



This preview shows how black text looks on a background with the Hex color E97491.

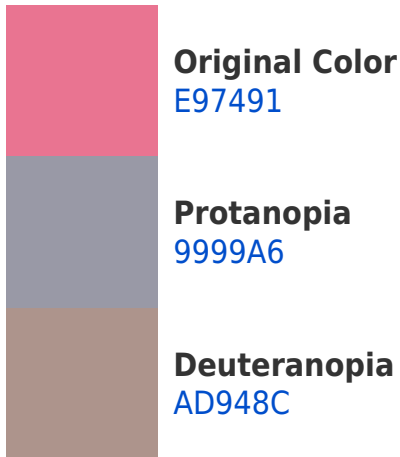


This preview shows how white text looks on a background with the Hex color E97491.

# Color Blindness Simulation

Color vision deficiency is a very complex topic, and I could not describe the different causes any better than Wikipedia does, so if you want to learn more, you should check out their [article about color blindness](#).

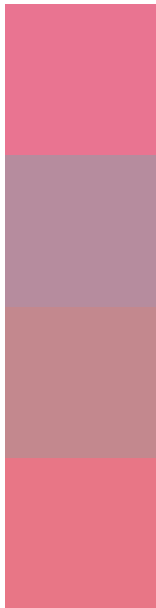
## Dichromacy





**Tritanopia**  
E87780

# Trichromacy



**Original Color**  
E97491

**Protanomaly**  
B68C9E

**Deuteranomaly**  
C3888E

**Tritanomaly**  
E87686

# Monochromacy



**Original Color**  
E97491

**Achromatopsia**  
9A9A9A

**Achromatomaly**  
B78C97

# CSS Examples

## Text

The CSS property to change the color of the text to Hex E97491 is called "color". The color property can be set on classes, ids or directly on the HTML element.

This example shows how text in the color #E97491 looks like.

```
.text, #text, p{  
    color:#E97491  
}
```

If you want to add a text shadow in that color use the text-shadow property, you can generate a text shadow directly with our [CSS Text Shadow Generator](#).

Here you see how black text with a 4 pixel #E97491 colored shadow looks like.

```
.shadow{ text-shadow: 4px 4px 2px #E97491
}
```

## Border

The CSS property to change the border of an element to Hex E97491 is called "border". The border property can be set on classes, ids or directly on the HTML element.

This example shows the color as border, it can be applied via the CSS property "border" or "border-color".

```
.border, #border, table{ border:4px solid
#E97491 }
```

If only the border color should be changed use the property border-color.

```
.border{ border-color:#E97491 }
```

If you want to add a box shadow in that color use:

Here you see how a box with a 4 pixel #E97491 colored shadow looks like.

```
.boxshadow{ -moz-box-shadow:4px 4px 4px  
4px #E97491; -webkit-box-shadow:4px 4px  
4px 4px #E97491; box-shadow:4px 4px 4px  
4px #E97491 }
```

# Background

The CSS property to change the background color of an element to Hex E97491 is called "background". The background property can be set on classes, ids or directly on the HTML element.

```
.background, #background, body{  
background:#E97491 }
```

If only the background color should be changed can be used:

```
.background{ background-color:#E97491 }
```

This example shows the color as background, it is applied via the CSS property "background".

To optimize and compress your CSS code, you can use our [online CSS compressor and optimizer](#) based on csstidy. If you want to create a linear or radial gradient as background or border, check our [CSS Gradient Generator](#).



Hey! You found this booklet interesting? Support Converting Colors with the new Membership Option!

The pro membership hides all ads, plus gives you double the colors in the color bucket, and more awesome pro features!

**[Learn more, Memberships starting at \\$2.50/m!](#)**

**Follow me  
on Twitter!**

@ConvertingColor