

Converting Colors

Hex(E97C8F)

Have a look what the booklet for
Hex(E97C8F) contains.

Hex(E97C8F)	3
<i>Conversions</i>	4
<i>Details</i>	6
<i>Harmonies</i>	11
<i>Previews</i>	23
<i>Color Blindness Simulation</i>	26
<i>CSS Examples</i>	29

Color

Hex(E97C8F)

Conversions

Conversions Part 1

Format	Color
Hex	E97C8F
RGB	233, 124, 143
RGB Percent	91%, 49%, 56%
CMY	0.0863, 0.5137, 0.4392
CMYK	0.00, 0.47, 0.39, 0.09
HSL	350°, 71%, 70%
HSV	350°, 47%, 91%
XYZ	45.7698, 33.7221, 30.0833
YIQ	158.7570, 58.8650, 29.0170

Conversions

Conversions Part 2

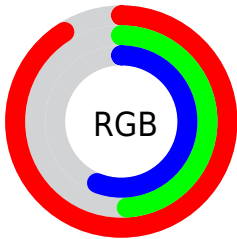
Format	Color
R_{YB}	233, 124, 143
Decimal	15301775
CIE _{Lab}	64.74, 43.88, 8.95
CIE _{LCh}	65, 44.787, 11.523
Yxy	33.7221, 0.4177, 0.3078
Android (android.graphics.Color)	4293491855 (0xFFE97C8F)
YUV	158.7570, -7.7682, 65.1111
Hunter-Lab	58.0707, 39.0653, 9.9346

Details

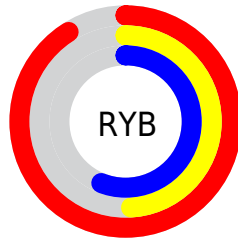
The Hex color **E97C8F** is a light color, and the websafe version is hex **FF9999**. A complement of this color would be **7CE9D6**, and the grayscale version is **9F9F9F**.

A 20% lighter version of the original color is **FFB3C5**, and **AE475D** is the 20% darker color. If you saturate the color by 10%, you get **E9657C**, and if you desaturate by 10%, it is **E993A2**.

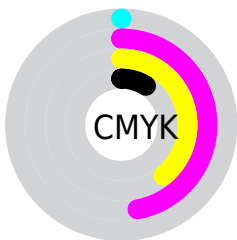
Distribution



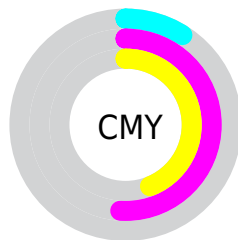
- Red (91%)
- Green (49%)
- Blue (56%)



- Red (91%)
- Yellow (49%)
- Blue (56%)



- Cyan (0%)
- Magenta (47%)
- Yellow (39%)
- Black (9%)



- Cyan (9%)
- Magenta (51%)
- Yellow (44%)

Brightness & Saturation Gradients

These gradients show how the Hex color E97C8F changes by changing the brightness by 10 percent. The first figure shows a shift by +10% for each color and the second figure -10%.

Similar to the brightness gradients but the following saturation gradients show a change of the Hex color E97C8F by changing the saturation by 10% instead.

 E97C8F

 E97C8F

FFFFFF

 CB6275

 FFB3C5

 AE475D

 FFCFE1

 912D45

 FFECFD

 750F2F

 59001B

 3F0000

 230001

 000000

 E97C8F

 E97C8F

 E9657C

 E993A2

 E94D69

 E9ABB5

 E93655

 E9C2C9

 E91F42

 E9D9DC

 E9082F

 E9F1EF

 E90029

 E9FFFF

Harmonies

Analogous

The Analogous color harmony consists of three colors that are next to each other on the color wheel.



DA80B7



E97C8F



E2846A

Triad

The Triadic color harmony groups three colors that are evenly spaced from another and form a triangle on the color wheel.



E97C8F



7BAA5F



00A8E8

Complementary

The Complementary color scheme is a pair of colors which are on the opposite of each other on the color wheel.



E97C8F



7CE9D6

Split Complementary

Split-complementary colors differ from the complementary color scheme. The scheme consists of three colors, the original color and two neighbors of the complement color.



00AFD1



E97C8F



40B082

Square

The Square scheme is like the rectangle color scheme, but the four colors are evenly spaced on the color wheel.



E97C8F



A6A04C



00B2AC



779CEB

Rectangle

The Rectangle color scheme consists of four colors that form a rectangle on the color wheel.



E97C8F



D48D57



00B2AC



00ABE3

Sweetspot

The Sweet Spot groups the original color and five complimentary colors.



E97C8F



FFDBE2



D57CE9



806A6E



000000



808080

Same Dimension

The Same Dimension uses a secret algorithm to generate beautiful new colors.



E97C8F



FF7089



E99F7C



756A6C



B50020



360009

Inverse Universe

The Inverse Universe completely reimagines the original color for something new.



E97C8F



FF7089



7CC6E9



756A6C



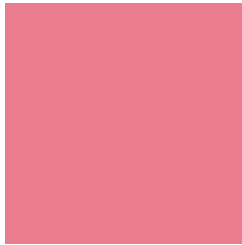
B50020



360009

Previews

White Background



This preview shows how the Hex color E97C8F looks on a white background.

Color Contrast Check

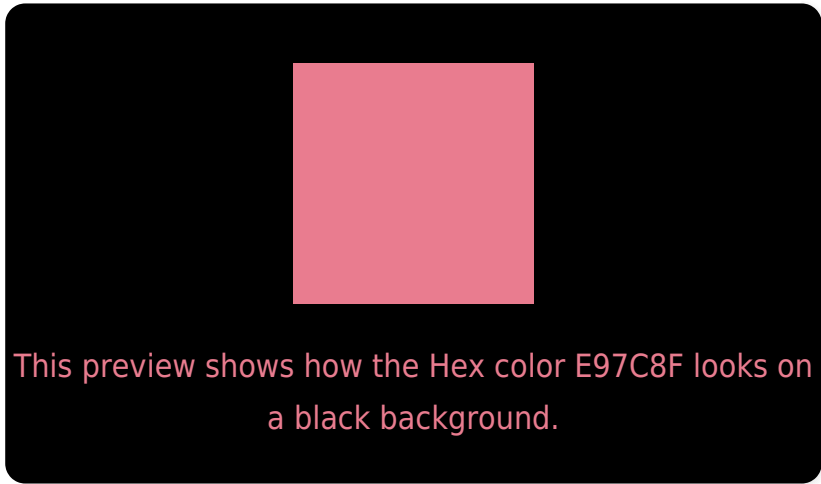
Large Text (above 18pt) WCAG AA × Fail

Any Text WCAG AA × Fail

Large Text (above 18pt) WCAG AAA × Fail

Any Text WCAG AAA × Fail

Black Background



Color Contrast Check

Large Text (above 18pt) WCAG AA ✓ Pass

Any Text WCAG AA ✓ Pass

Large Text (above 18pt) WCAG AAA ✓ Pass

Any Text WCAG AAA ✓ Pass

If you want to check with other color combinations, try the [Color Contrast Checker](#).

Hex E97C8F Background



This preview shows how black text looks on a background with the Hex color E97C8F.

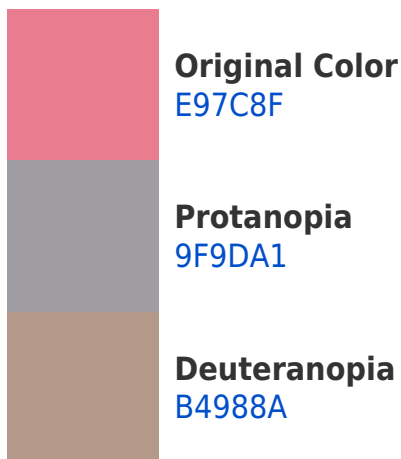


This preview shows how white text looks on a background with the Hex color E97C8F.

Color Blindness Simulation

Color vision deficiency is a very complex topic, and I could not describe the different causes any better than Wikipedia does, so if you want to learn more, you should check out their [article about color blindness](#).

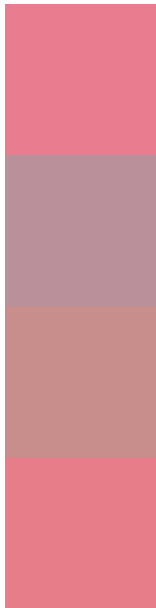
Dichromacy





Tritanopia
E87D87

Trichromacy



Original Color
E97C8F

Protanomaly
BA919A

Deuteranomaly
C78E8C

Tritanomaly
E87D8A

Monochromacy



Original Color
E97C8F

Achromatopsia
9F9F9F

Achromatomaly
BA9299

CSS Examples

Text

The CSS property to change the color of the text to Hex E97C8F is called "color". The color property can be set on classes, ids or directly on the HTML element.

This example shows how text in the color #E97C8F looks like.

```
.text, #text, p{  
    color:#E97C8F  
}
```

If you want to add a text shadow in that color use the text-shadow property, you can generate a text shadow directly with our [CSS Text Shadow Generator](#).

Here you see how black text with a 4 pixel #E97C8F colored shadow looks like.

```
.shadow{ text-shadow: 4px 4px 2px #E97C8F
}
```

Border

The CSS property to change the border of an element to Hex E97C8F is called "border". The border property can be set on classes, ids or directly on the HTML element.

This example shows the color as border, it can be applied via the CSS property "border" or "border-color".

```
.border, #border, table{ border:4px solid
#E97C8F }
```

If only the border color should be changed use the property `border-color`.

```
.border{ border-color:#E97C8F }
```

If you want to add a box shadow in that color use:

Here you see how a box with a 4 pixel #E97C8F colored shadow looks like.

```
.boxshadow{ -moz-box-shadow:4px 4px 4px  
4px #E97C8F; -webkit-box-shadow:4px 4px  
4px 4px #E97C8F; box-shadow:4px 4px 4px  
4px #E97C8F }
```

Background

The CSS property to change the background color of an element to Hex E97C8F is called "background". The background property can be set on classes, ids or directly on the HTML element.

```
.background, #background, body{  
background:#E97C8F }
```

If only the background color should be changed can be used:

```
.background{ background-color:#E97C8F }
```

This example shows the color as background, it is applied via the CSS property "background".

To optimize and compress your CSS code, you can use our [online CSS compressor and optimizer](#) based on csstidy. If you want to create a linear or radial gradient as background or border, check our [CSS Gradient Generator](#).

Hey! You found this booklet interesting? Support Converting Colors with the new Membership Option!

The pro membership hides all ads, plus gives you double the colors in the color bucket, and more awesome pro features!

[Learn more, Memberships starting at \\$2.50/m!](#)

**Follow me
on Twitter!**

@ConvertingColor