

Converting Colors

Hex(E97C9A)

Have a look what the booklet for
Hex(E97C9A) contains.

Hex(E97C9A)	3
<i>Conversions</i>	4
<i>Details</i>	6
<i>Harmonies</i>	11
<i>Previews</i>	23
<i>Color Blindness Simulation</i>	26
<i>CSS Examples</i>	29

Color

Hex(E97C9A)

Conversions

Conversions Part 1

Format	Color
Hex	E97C9A
RGB	233, 124, 154
RGB Percent	91%, 49%, 60%
CMY	0.0863, 0.5137, 0.3961
CMYK	0.00, 0.47, 0.34, 0.09
HSL	343°, 71%, 70%
HSV	343°, 47%, 91%
XYZ	46.6447, 34.0720, 34.6900
YIQ	160.0110, 55.3340, 32.4380

Conversions

Conversions Part 2

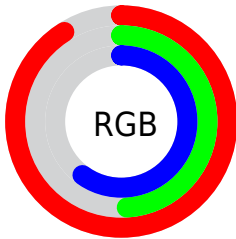
Format	Color
R _Y B	233, 124, 154
Decimal	15301786
CIE Lab	65.02, 45.17, 3.09
CIE LCh	65, 45.272, 3.915
Yxy	34.0720, 0.4042, 0.2952
Android (android.graphics.Color)	4293491866 (0xFFE97C9A)
YUV	160.0110, -2.9634, 64.0114
Hunter-Lab	58.3713, 40.4902, 5.6239

Details

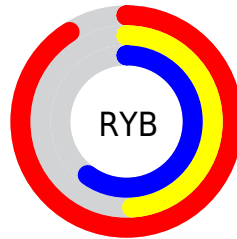
The Hex color **E97C9A** is a light color, and the websafe version is hex **CC6699**. A complement of this color would be **7CE9CB**, and the grayscale version is **A0A0A0**.

A 20% lighter version of the original color is **FFB3D0**, and **AE4767** is the 20% darker color. If you saturate the color by 10%, you get **E96589**, and if you desaturate by 10%, it is **E993AB**.

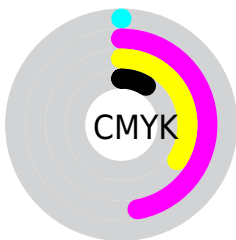
Distribution



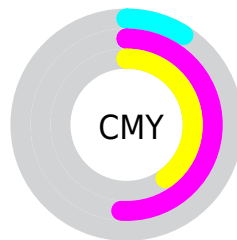
- Red (91%)
- Green (49%)
- Blue (60%)



- Red (91%)
- Yellow (49%)
- Blue (60%)



- Cyan (0%)
- Magenta (47%)
- Yellow (34%)
- Black (9%)



- Cyan (9%)
- Magenta (51%)
- Yellow (40%)

Brightness & Saturation Gradients

These gradients show how the Hex color E97C9A changes by changing the brightness by 10 percent. The first figure shows a shift by +10% for each color and the second figure -10%.

Similar to the brightness gradients but the following saturation gradients show a change of the Hex color E97C9A by changing the saturation by 10% instead.

 E97C9A

 E97C9A

FFFFFF

 CB6180

 FFB3D0

 AE4767

 FFCFED

 922D4F

 FFECCF

 760D38

 5A0023

 40000D

 250001

 000000

 E97C9A

 E97C9A

 E96589

 E993AB

 E94D78

 E9ABBC

 E93667

 E9C2CD

 E91F56

 E9D9DE

 E90846

 E9F1EE

 E90040

 E9FFFF

Harmonies

Analogous

The Analogous color harmony consists of three colors that are next to each other on the color wheel.



D483C2



E97C9A



E78173

Triad

The Triadic color harmony groups three colors that are evenly spaced from another and form a triangle on the color wheel.



E97C9A



87A958



00ABE6

Complementary

The Complementary color scheme is a pair of colors which are on the opposite of each other on the color wheel.



E97C9A



7CE9CB

Split Complementary

Split-complementary colors differ from the complementary color scheme. The scheme consists of three colors, the original color and two neighbors of the complement color.



00B1CA



E97C9A



52B079

Square

The Square scheme is like the rectangle color scheme, but the four colors are evenly spaced on the color wheel.



E97C9A



B19D4B



00B3A2



63A0EE

Rectangle

The Rectangle color scheme consists of four colors that form a rectangle on the color wheel.



E97C9A



DB8A5D



00B3A2



00AEDE

Sweetspot

The Sweet Spot groups the original color and five complimentary colors.



E97C9A



FFDBE5



CA7CE9



806A70



000000



808080

Same Dimension

The Same Dimension uses a secret algorithm to generate beautiful new colors.



E97C9A



FF7098



E9947C



756A6D



B50032



36000F

Inverse Universe

The Inverse Universe completely reimagines the original color for something new.



E97C9A



FF7098



7CD1E9



756A6D



B50032



36000F

Previews

White Background



This preview shows how the Hex color E97C9A looks on a white background.

Color Contrast Check

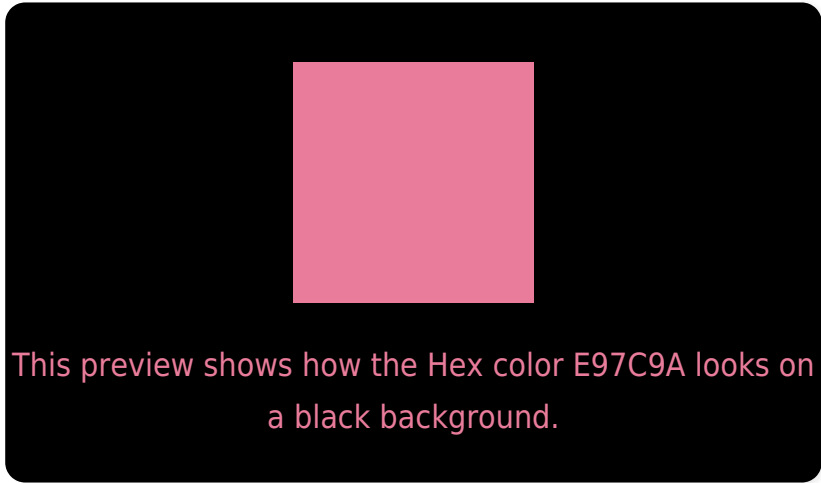
Large Text (above 18pt) WCAG AA × Fail

Any Text WCAG AA × Fail

Large Text (above 18pt) WCAG AAA × Fail

Any Text WCAG AAA × Fail

Black Background



Color Contrast Check

Large Text (above 18pt) WCAG AA ✓ Pass

Any Text WCAG AA ✓ Pass

Large Text (above 18pt) WCAG AAA ✓ Pass

Any Text WCAG AAA ✓ Pass

If you want to check with other color combinations, try the [Color Contrast Checker](#).

Hex E97C9A Background



This preview shows how black text looks on a background with the Hex color E97C9A.



This preview shows how white text looks on a background with the Hex color E97C9A.

Color Blindness Simulation

Color vision deficiency is a very complex topic, and I could not describe the different causes any better than Wikipedia does, so if you want to learn more, you should check out their [article about color blindness](#).

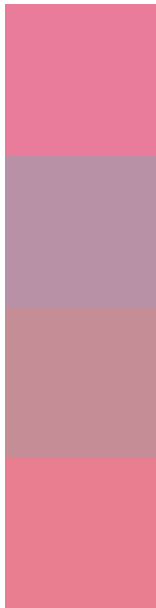
Dichromacy





Tritanopia
E77F88

Trichromacy



Original Color
E97C9A

Protanomaly
B991A6

Deuteranomaly
C58E97

Tritanomaly
E87E8F

Monochromacy



Original Color
E97C9A

Achromatopsia
A0A0A0

Achromatomaly
BB939E

CSS Examples

Text

The CSS property to change the color of the text to Hex E97C9A is called "color". The color property can be set on classes, ids or directly on the HTML element.

This example shows how text in the color #E97C9A looks like.

```
.text, #text, p{  
    color:#E97C9A  
}
```

If you want to add a text shadow in that color use the text-shadow property, you can generate a text shadow directly with our [CSS Text Shadow Generator](#).

Here you see how black text with a 4 pixel #E97C9A colored shadow looks like.

```
.shadow{ text-shadow: 4px 4px 2px #E97C9A
}
```

Border

The CSS property to change the border of an element to Hex E97C9A is called "border". The border property can be set on classes, ids or directly on the HTML element.

This example shows the color as border, it can be applied via the CSS property "border" or "border-color".

```
.border, #border, table{ border:4px solid
#E97C9A }
```

If only the border color should be changed use the property `border-color`.

```
.border{ border-color:#E97C9A }
```

If you want to add a box shadow in that color use:

Here you see how a box with a 4 pixel #E97C9A colored shadow looks like.

```
.boxshadow{ -moz-box-shadow:4px 4px 4px  
4px #E97C9A; -webkit-box-shadow:4px 4px  
4px 4px #E97C9A; box-shadow:4px 4px 4px  
4px #E97C9A }
```

Background

The CSS property to change the background color of an element to Hex E97C9A is called "background". The background property can be set on classes, ids or directly on the HTML element.

```
.background, #background, body{  
background:#E97C9A }
```

If only the background color should be changed can be used:

```
.background{ background-color:#E97C9A }
```

This example shows the color as background, it is applied via the CSS property "background".

To optimize and compress your CSS code, you can use our [online CSS compressor and optimizer](#) based on csstidy. If you want to create a linear or radial gradient as background or border, check our [CSS Gradient Generator](#).

Hey! You found this booklet interesting? Support Converting Colors with the new Membership Option!

The pro membership hides all ads, plus gives you double the colors in the color bucket, and more awesome pro features!

[Learn more, Memberships starting at \\$2.50/m!](#)

**Follow me
on Twitter!**

@ConvertingColor