

Converting Colors

Hex(E98D99)

Have a look what the booklet for
Hex(E98D99) contains.

Hex(E98D99)	3
<i>Conversions</i>	4
<i>Details</i>	6
<i>Harmonies</i>	11
<i>Previews</i>	23
<i>Color Blindness Simulation</i>	26
<i>CSS Examples</i>	29

Color

Hex(E98D99)

Conversions

Conversions Part 1

Format	Color
Hex	E98D99
RGB	233, 141, 153
RGB Percent	91%, 55%, 60%
CMY	0.0863, 0.4471, 0.4000
CMYK	0.00, 0.39, 0.34, 0.09
HSL	352°, 68%, 73%
HSV	352°, 39%, 91%
XYZ	48.8789, 38.6733, 35.0255
YIQ	169.8760, 50.9800, 23.2360

Conversions

Conversions Part 2

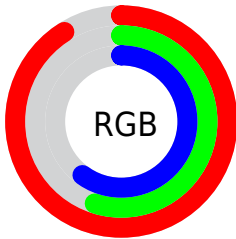
Format	Color
R _Y B	233, 141, 153
Decimal	15306137
CIE Lab	68.51, 36.30, 8.68
CIE LCh	69, 37.326, 13.442
Yxy	38.6733, 0.3988, 0.3155
Android (android.graphics.Color)	4293496217 (0xFFE98D99)
YUV	169.8760, -8.3199, 55.3597
Hunter-Lab	62.1879, 31.4701, 10.1382

Details

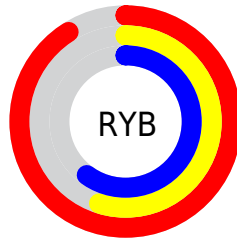
The Hex color **E98D99** is a light color, and the websafe version is hex **FF9999**. A complement of this color would be **8DE9DD**, and the grayscale version is **AAAAAA**.

A 20% lighter version of the original color is **FFC4CF**, and **AF5966** is the 20% darker color. If you saturate the color by 10%, you get **E97685**, and if you desaturate by 10%, it is **E9A4AD**.

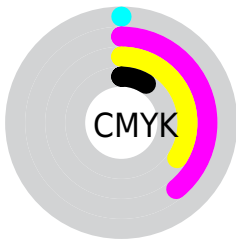
Distribution



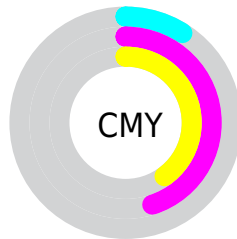
- Red (91%)
- Green (55%)
- Blue (60%)



- Red (91%)
- Yellow (55%)
- Blue (60%)



- Cyan (0%)
- Magenta (39%)
- Yellow (34%)
- Black (9%)



- Cyan (9%)
- Magenta (45%)
- Yellow (40%)

Brightness & Saturation Gradients

These gradients show how the Hex color E98D99 changes by changing the brightness by 10 percent. The first figure shows a shift by +10% for each color and the second figure -10%.

Similar to the brightness gradients but the following saturation gradients show a change of the Hex color E98D99 by changing the saturation by 10% instead.

 E98D99

 E98D99

FFFFFF

 CC737F

 FFC4CF

 AF5966

 FFE0EB

 93404E

 FFFDFD

 772738

 5C0B22

 42000C

 2A0001

 000000

 E98D99

 E98D99

 E97685

 E9A4AD

 E95E70

 E9BCC2

 E9475C

 E9D3D6

 E93048

 E9EAEA

 E91934

 E9FFFE

 E9011F

 E9FFFF

 E9001E

Harmonies

Analogous

The Analogous color harmony consists of three colors that are next to each other on the color wheel.



DD8FBB



E98D99



E3937A

Triad

The Triadic color harmony groups three colors that are evenly spaced from another and form a triangle on the color wheel.



E98D99



89B375



54B0E7

Complementary

The Complementary color scheme is a pair of colors which are on the opposite of each other on the color wheel.



E98D99



8DE9DD

Split Complementary

Split-complementary colors differ from the complementary color scheme. The scheme consists of three colors, the original color and two neighbors of the complement color.



17B7D4



E98D99



5EB893

Square

The Square scheme is like the rectangle color scheme, but the four colors are evenly spaced on the color wheel.



E98D99



AEAA64



2CB9B6



8FA5E8

Rectangle

The Rectangle color scheme consists of four colors that form a rectangle on the color wheel.



E98D99



D69B6B



2CB9B6



40B3E3

Sweetspot

The Sweet Spot groups the original color and five complimentary colors.



E98D99



FFE0E4



DD8DE9



806E70



000000



808080

Same Dimension

The Same Dimension uses a secret algorithm to generate beautiful new colors.



E98D99



FF8797



E9AF8D



756A6B



B50018



360007

Inverse Universe

The Inverse Universe completely reimagines the original color for something new.



E98D99



FF8797



8DC7E9



756A6B



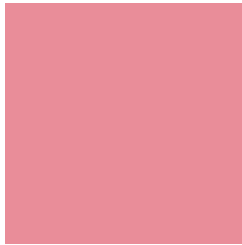
B50018



360007

Previews

White Background



This preview shows how the Hex color E98D99 looks on a white background.

Color Contrast Check

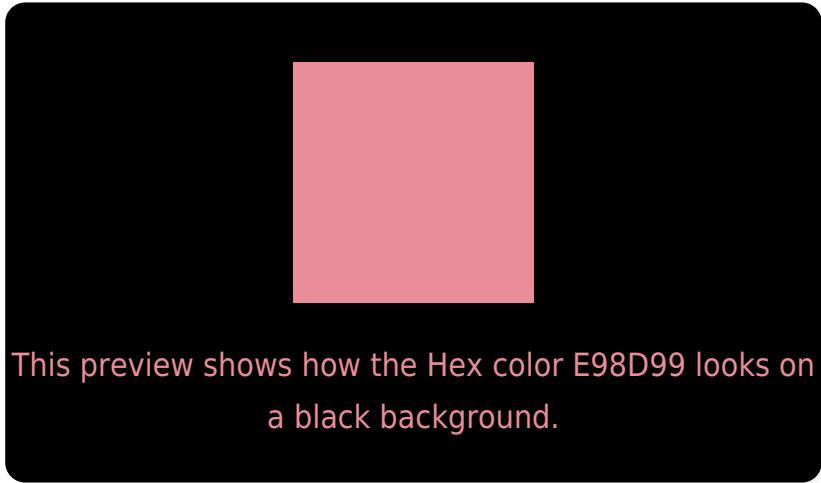
Large Text (above 18pt) WCAG AA × Fail

Any Text WCAG AA × Fail

Large Text (above 18pt) WCAG AAA × Fail

Any Text WCAG AAA × Fail

Black Background



Color Contrast Check

Large Text (above 18pt) WCAG AA ✓ Pass

Any Text WCAG AA ✓ Pass

Large Text (above 18pt) WCAG AAA ✓ Pass

Any Text WCAG AAA ✓ Pass

If you want to check with other color combinations, try the [Color Contrast Checker](#).

Hex E98D99 Background



This preview shows how black text looks on a background with the Hex color E98D99.



This preview shows how white text looks on a background with the Hex color E98D99.

Color Blindness Simulation

Color vision deficiency is a very complex topic, and I could not describe the different causes any better than Wikipedia does, so if you want to learn more, you should check out their [article about color blindness](#).

Dichromacy



Original Color
E98D99

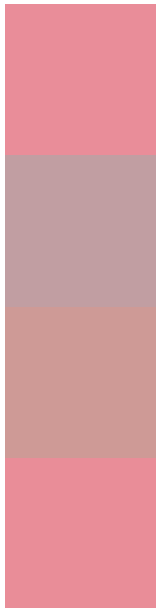
Protanopia
AAA7A7

Deuteranopia
BEA195



Tritanopia
E98D98

Trichromacy



Original Color
E98D99

Protanomaly
C19EA2

Deuteranomaly
CE9A96

Tritanomaly
E98D98

Monochromacy



Original Color
E98D99

Achromatopsia
AAAAAA

Achromatomaly
C19FA4

CSS Examples

Text

The CSS property to change the color of the text to Hex E98D99 is called "color". The color property can be set on classes, ids or directly on the HTML element.

This example shows how text in the color #E98D99 looks like.

```
.text, #text, p{  
    color:#E98D99  
}
```

If you want to add a text shadow in that color use the text-shadow property, you can generate a text shadow directly with our [CSS Text Shadow Generator](#).

Here you see how black text with a 4 pixel #E98D99 colored shadow looks like.

```
.shadow{ text-shadow: 4px 4px 2px #E98D99
}
```

Border

The CSS property to change the border of an element to Hex E98D99 is called "border". The border property can be set on classes, ids or directly on the HTML element.

This example shows the color as border, it can be applied via the CSS property "border" or "border-color".

```
.border, #border, table{ border:4px solid
#E98D99 }
```

If only the border color should be changed use the property `border-color`.

```
.border{ border-color:#E98D99 }
```

If you want to add a box shadow in that color use:

Here you see how a box with a 4 pixel #E98D99 colored shadow looks like.

```
.boxshadow{ -moz-box-shadow:4px 4px 4px  
4px #E98D99; -webkit-box-shadow:4px 4px  
4px 4px #E98D99; box-shadow:4px 4px 4px  
4px #E98D99 }
```

Background

The CSS property to change the background color of an element to Hex E98D99 is called "background". The background property can be set on classes, ids or directly on the HTML element.

```
.background, #background, body{  
background:#E98D99 }
```

If only the background color should be changed can be used:

```
.background{ background-color:#E98D99 }
```

This example shows the color as background, it is applied via the CSS property "background".

To optimize and compress your CSS code, you can use our [online CSS compressor and optimizer](#) based on csstidy. If you want to create a linear or radial gradient as background or border, check our [CSS Gradient Generator](#).

Hey! You found this booklet interesting? Support Converting Colors with the new Membership Option!

The pro membership hides all ads, plus gives you double the colors in the color bucket, and more awesome pro features!

[Learn more, Memberships starting at \\$2.50/m!](#)

**Follow me
on Twitter!**

@ConvertingColor