

Converting Colors

Hex(E9B3E2)

Have a look what the booklet for
Hex(E9B3E2) contains.

Hex(E9B3E2)	3
<i>Conversions</i>	4
<i>Details</i>	6
<i>Harmonies</i>	11
<i>Previews</i>	23
<i>Color Blindness Simulation</i>	26
<i>CSS Examples</i>	29

Color

Hex(E9B3E2)

Conversions

Conversions Part 1

Format	Color
Hex	E9B3E2
RGB	233, 179, 226
RGB Percent	91%, 70%, 89%
CMY	0.0863, 0.2980, 0.1137
CMYK	0.00, 0.23, 0.03, 0.09
HSL	308°, 55%, 81%
HSV	308°, 23%, 91%
XYZ	63.4518, 55.0548, 79.2339
YIQ	200.5040, 17.0970, 26.0650

Conversions

Conversions Part 2

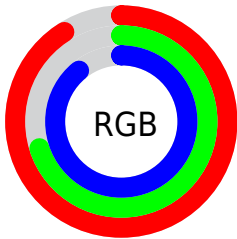
Format	Color
R _Y B	233, 179, 226
Decimal	15315938
CIE Lab	79.07, 27.19, -15.97
CIE LCh	79, 31.538, 329.569
Yxy	55.0548, 0.3209, 0.2784
Android (android.graphics.Color)	4293506018 (0xFFE9B3E2)
YUV	200.5040, 12.5695, 28.4990
Hunter-Lab	74.1989, 22.7976, -11.3740

Details

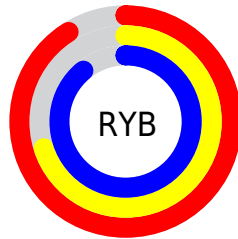
The Hex color **E9B3E2** is a light color, and the websafe version is hex **FFCCFF**. A complement of this color would be **B3E9BA**, and the grayscale version is **C8C8C8**.

A 20% lighter version of the original color is **FFEBFF**, and **B17EAB** is the 20% darker color. If you saturate the color by 10%, you get **E99CDF**, and if you desaturate by 10%, it is **E9CAE5**.

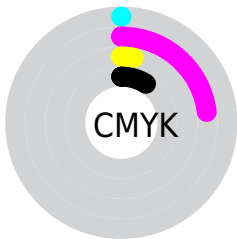
Distribution



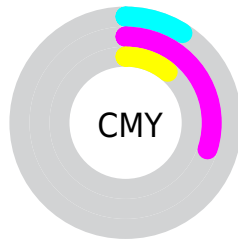
- Red (91%)
- Green (70%)
- Blue (89%)



- Red (91%)
- Yellow (70%)
- Blue (89%)



- Cyan (0%)
- Magenta (23%)
- Yellow (3%)
- Black (9%)



- Cyan (9%)
- Magenta (30%)
- Yellow (11%)

Brightness & Saturation Gradients

These gradients show how the Hex color E9B3E2 changes by changing the brightness by 10 percent. The first figure shows a shift by +10% for each color and the second figure -10%.

Similar to the brightness gradients but the following saturation gradients show a change of the Hex color E9B3E2 by changing the saturation by 10% instead.

 E9B3E2

 E9B3E2

FFFFFF

 CD98C6

 FFE8FF

 B17EAB

 966490

 7B4C76

 62345E

 491D46

 32062F

 1E001B

 000000

 E9B3E2

 E9B3E2

 E99CDF

 E9CAE5

 E984DC

 E9E2E8

 E96DD9

 E9F9EB

 E956D6

 E9FFEE

 E93ED3

 E9FFF1

 E927D0

 E9FFF4

 E910CD

 E9FFF7

 E900CB

 E9FFFA

 E9FFFD

Harmonies

Analogous

The Analogous color harmony consists of three colors that are next to each other on the color wheel.



C8BCF7



E9B3E2



FCAEC5

Triad

The Triadic color harmony groups three colors that are evenly spaced from another and form a triangle on the color wheel.



E9B3E2



D9C289



68D3E0

Complementary

The Complementary color scheme is a pair of colors which are on the opposite of each other on the color wheel.



E9B3E2



B3E9BA

Split Complementary

Split-complementary colors differ from the complementary color scheme. The scheme consists of three colors, the original color and two neighbors of the complement color.



79D4C2



E9B3E2



BACB90

Square

The Square scheme is like the rectangle color scheme, but the four colors are evenly spaced on the color wheel.



E9B3E2



F1B892



98D1A5



77CFF6

Rectangle

The Rectangle color scheme consists of four colors that form a rectangle on the color wheel.



E9B3E2



FFAFB2



98D1A5



6BD4D6

Sweetspot

The Sweet Spot groups the original color and five complimentary colors.



E9B3E2



FFEDFD



B9B3E9



80757E



000000



808080

Same Dimension

The Same Dimension uses a secret algorithm to generate beautiful new colors.



E9B3E2



FFB8F6



E9B3C8



756A74



B5009E



36002F

Inverse Universe

The Inverse Universe completely reimagines the original color for something new.



E9B3E2



FFB8F6



B3E9D4



756A74



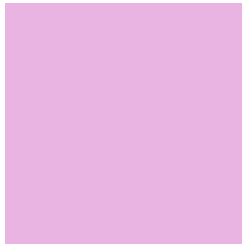
B5009E



36002F

Previews

White Background



This preview shows how the Hex color E9B3E2 looks on a white background.

Color Contrast Check

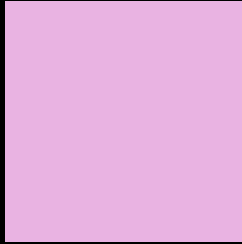
Large Text (above 18pt) WCAG AA × Fail

Any Text WCAG AA × Fail

Large Text (above 18pt) WCAG AAA × Fail

Any Text WCAG AAA × Fail

Black Background



This preview shows how the Hex color E9B3E2 looks on a black background.

Color Contrast Check

Large Text (above 18pt) WCAG AA ✓ Pass

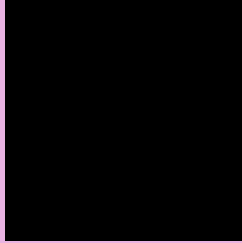
Any Text WCAG AA ✓ Pass

Large Text (above 18pt) WCAG AAA ✓ Pass

Any Text WCAG AAA ✓ Pass

If you want to check with other color combinations, try the [Color Contrast Checker](#).

Hex E9B3E2 Background



This preview shows how black text looks on a background with the Hex color E9B3E2.

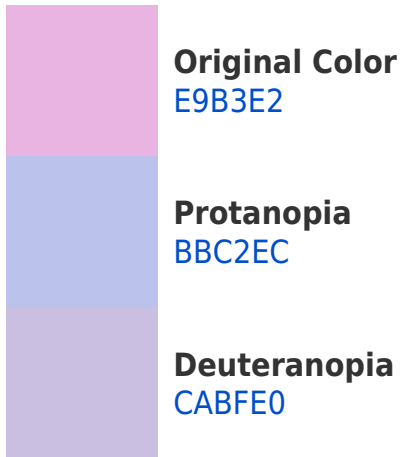


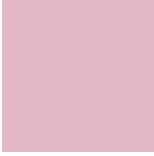
This preview shows how white text looks on a background with the Hex color E9B3E2.

Color Blindness Simulation

Color vision deficiency is a very complex topic, and I could not describe the different causes any better than Wikipedia does, so if you want to learn more, you should check out their [article about color blindness](#).

Dichromacy





Tritanopia
E5B8C6

Trichromacy



Original Color
E9B3E2



Protanomaly
CCBDE8



Deuteranomaly
D5BBE1

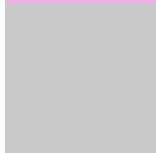


Tritanomaly
E6B6D0

Monochromacy



Original Color
E9B3E2



Achromatopsia
C9C9C9



Achromatomaly
D5C1D2

CSS Examples

Text

The CSS property to change the color of the text to Hex E9B3E2 is called "color". The color property can be set on classes, ids or directly on the HTML element.

This example shows how text in the color #E9B3E2 looks like.

```
.text, #text, p{  
    color:#E9B3E2  
}
```

If you want to add a text shadow in that color use the text-shadow property, you can generate a text shadow directly with our [CSS Text Shadow Generator](#).

Here you see how black text with a 4 pixel #E9B3E2 colored shadow looks like.

```
.shadow{ text-shadow: 4px 4px 2px #E9B3E2
}
```

Border

The CSS property to change the border of an element to Hex E9B3E2 is called "border". The border property can be set on classes, ids or directly on the HTML element.

This example shows the color as border, it can be applied via the CSS property "border" or "border-color".

```
.border, #border, table{ border:4px solid
#E9B3E2 }
```

If only the border color should be changed use the property `border-color`.

```
.border{ border-color:#E9B3E2 }
```

If you want to add a box shadow in that color use:

Here you see how a box with a 4 pixel #E9B3E2 colored shadow looks like.

```
.boxshadow{ -moz-box-shadow:4px 4px 4px  
4px #E9B3E2; -webkit-box-shadow:4px 4px  
4px 4px #E9B3E2; box-shadow:4px 4px 4px  
4px #E9B3E2 }
```

Background

The CSS property to change the background color of an element to Hex E9B3E2 is called "background". The background property can be set on classes, ids or directly on the HTML element.

```
.background, #background, body{  
background:#E9B3E2 }
```

If only the background color should be changed can be used:

```
.background{ background-color:#E9B3E2 }
```

This example shows the color as background, it is applied via the CSS property "background".

To optimize and compress your CSS code, you can use our [online CSS compressor and optimizer](#) based on csstidy. If you want to create a linear or radial gradient as background or border, check our [CSS Gradient Generator](#).

Hey! You found this booklet interesting? Support Converting Colors with the new Membership Option!

The pro membership hides all ads, plus gives you double the colors in the color bucket, and more awesome pro features!

[Learn more, Memberships starting at \\$2.50/m!](#)

**Follow me
on Twitter!**

@ConvertingColor