

Converting Colors

Hex(E9C0B1)

Have a look what the booklet for
Hex(E9C0B1) contains.

Hex(E9C0B1)	3
<i>Conversions</i>	4
<i>Details</i>	6
<i>Harmonies</i>	11
<i>Previews</i>	23
<i>Color Blindness Simulation</i>	26
<i>CSS Examples</i>	29

Color

Hex(E9C0B1)

Conversions

Conversions Part 1

Format	Color
Hex	E9C0B1
RGB	233, 192, 177
RGB Percent	91%, 75%, 69%
CMY	0.0863, 0.2471, 0.3059
CMYK	0.00, 0.18, 0.24, 0.09
HSL	16°, 56%, 80%
HSV	16°, 24%, 91%
XYZ	60.3897, 58.1972, 49.6453
YIQ	202.5490, 29.2510, 4.0270

Conversions

Conversions Part 2

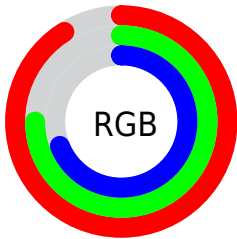
Format	Color
R _Y B	233, 197, 177
Decimal	15319217
CIE Lab	80.85, 12.39, 13.05
CIE LCh	81, 17.995, 46.464
Yxy	58.1972, 0.3590, 0.3459
Android (android.graphics.Color)	4293509297 (0xFFE9C0B1)
YUV	202.5490, -12.5957, 26.7055
Hunter-Lab	76.2871, 7.8001, 14.8169

Details

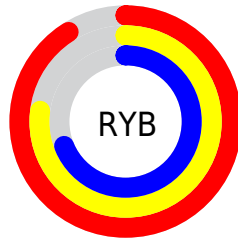
The Hex color **E9C0B1** is a light color, and the websafe version is hex **FFCCCC**. A complement of this color would be **B1DAE9**, and the grayscale version is **CBCBCB**.

A 20% lighter version of the original color is **FFF8E9**, and **B18A7C** is the 20% darker color. If you saturate the color by 10%, you get **E9AF9A**, and if you desaturate by 10%, it is **E9D1C8**.

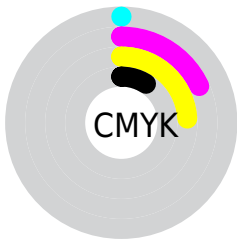
Distribution



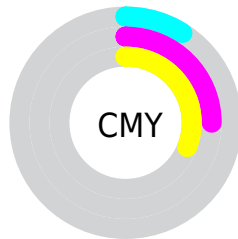
- Red (91%)
- Green (75%)
- Blue (69%)



- Red (91%)
- Yellow (77%)
- Blue (69%)



- Cyan (0%)
- Magenta (18%)
- Yellow (24%)
- Black (9%)



- Cyan (9%)
- Magenta (25%)
- Yellow (31%)

Brightness & Saturation Gradients

These gradients show how the Hex color E9C0B1 changes by changing the brightness by 10 percent. The first figure shows a shift by +10% for each color and the second figure -10%.

Similar to the brightness gradients but the following saturation gradients show a change of the Hex color E9C0B1 by changing the saturation by 10% instead.

 E9C0B1

 E9C0B1

FFFFFF

 CCA596

 FFF8E9


 B18A7C

 957163

 7B584C

 614135

 482B20

 311608

 1B0000

 000000

 E9C0B1

 E9C0B1

 E9AF9A

 E9D1C8

 E99E82

 E9E2E0

 E98D6B

 E9F3F7

 E97C54

 E9FFFF

 E96B3D

 E95A25

 E9490E

 E93E00

Harmonies

Analogous

The Analogous color harmony consists of three colors that are next to each other on the color wheel.



ECBDC0



E9C0B1



DDC5A8

Triad

The Triadic color harmony groups three colors that are evenly spaced from another and form a triangle on the color wheel.



E9C0B1



A8D2C0



C2C7E9

Complementary

The Complementary color scheme is a pair of colors which are on the opposite of each other on the color wheel.



E9C0B1



B1DAE9

Split Complementary

Split-complementary colors differ from the complementary color scheme. The scheme consists of three colors, the original color and two neighbors of the complement color.



ADCDE9



E9C0B1



9DD3D2

Square

The Square scheme is like the rectangle color scheme, but the four colors are evenly spaced on the color wheel.



E9C0B1



B9CFB1



9FD1E0



D7C2E0

Rectangle

The Rectangle color scheme consists of four colors that form a rectangle on the color wheel.



E9C0B1



D2C9A7



9FD1E0



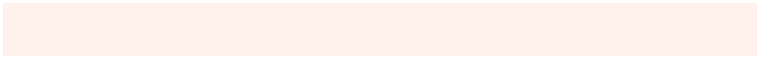
BBC9EA

Sweetspot

The Sweet Spot groups the original color and five complimentary colors.



E9C0B1



FFF2ED



E9B1DA



807875



000000



808080

Same Dimension

The Same Dimension uses a secret algorithm to generate beautiful new colors.



E9C0B1



FFC9B5



E9DCB1



756D6A



B53000



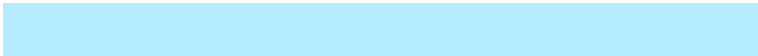
360E00

Inverse Universe

The Inverse Universe completely reimagines the original color for something new.



B1DAE9



B5EBFF



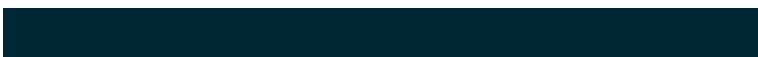
B1BEE9



6A7275



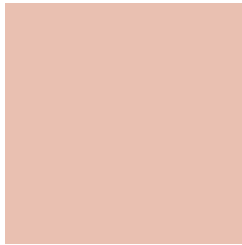
0085B5



002736

Previews

White Background



This preview shows how the Hex color E9C0B1 looks on a white background.

Color Contrast Check

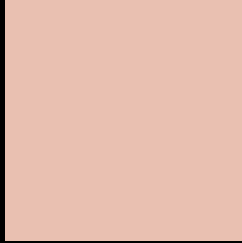
Large Text (above 18pt) WCAG AA × Fail

Any Text WCAG AA × Fail

Large Text (above 18pt) WCAG AAA × Fail

Any Text WCAG AAA × Fail

Black Background



This preview shows how the Hex color E9C0B1 looks on a black background.

Color Contrast Check

Large Text (above 18pt) WCAG AA ✓ Pass

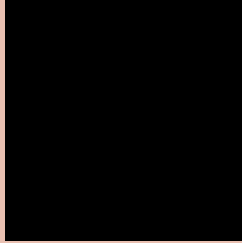
Any Text WCAG AA ✓ Pass

Large Text (above 18pt) WCAG AAA ✓ Pass

Any Text WCAG AAA ✓ Pass

If you want to check with other color combinations, try the [Color Contrast Checker](#).

Hex E9C0B1 Background



This preview shows how black text looks on a background with the Hex color E9C0B1.

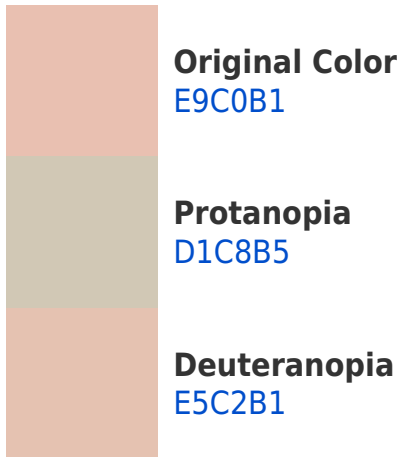


This preview shows how white text looks on a background with the Hex color E9C0B1.

Color Blindness Simulation

Color vision deficiency is a very complex topic, and I could not describe the different causes any better than Wikipedia does, so if you want to learn more, you should check out their [article about color blindness](#).

Dichromacy



Trichromacy



Original Color
E9C0B1

Protanomaly
DAC5B4

Deuteranomaly
E6C1B1

Tritanomaly
EBBDC2

Monochromacy



Original Color
E9C0B1

Achromatopsia
CBCBCB

Achromatomaly
D6C7C2

CSS Examples

Text

The CSS property to change the color of the text to Hex E9C0B1 is called "color". The color property can be set on classes, ids or directly on the HTML element.

This example shows how text in the color #E9C0B1 looks like.

```
.text, #text, p{  
    color:#E9C0B1  
}
```

If you want to add a text shadow in that color use the text-shadow property, you can generate a text shadow directly with our [CSS Text Shadow Generator](#).

Here you see how black text with a 4 pixel #E9C0B1 colored shadow looks like.

```
.shadow{ text-shadow: 4px 4px 2px #E9C0B1
}
```

Border

The CSS property to change the border of an element to Hex E9C0B1 is called "border". The border property can be set on classes, ids or directly on the HTML element.

This example shows the color as border, it can be applied via the CSS property "border" or "border-color".

```
.border, #border, table{ border:4px solid
#E9C0B1 }
```

If only the border color should be changed use the property `border-color`.

```
.border{ border-color:#E9C0B1 }
```

If you want to add a box shadow in that color use:

Here you see how a box with a 4 pixel #E9C0B1 colored shadow looks like.

```
.boxshadow{ -moz-box-shadow:4px 4px 4px  
4px #E9C0B1; -webkit-box-shadow:4px 4px  
4px 4px #E9C0B1; box-shadow:4px 4px 4px  
4px #E9C0B1 }
```

Background

The CSS property to change the background color of an element to Hex E9C0B1 is called "background". The background property can be set on classes, ids or directly on the HTML element.

```
.background, #background, body{  
background:#E9C0B1 }
```

If only the background color should be changed can be used:

```
.background{ background-color:#E9C0B1 }
```

This example shows the color as background, it is applied via the CSS property "background".

To optimize and compress your CSS code, you can use our [online CSS compressor and optimizer](#) based on csstidy. If you want to create a linear or radial gradient as background or border, check our [CSS Gradient Generator](#).

Hey! You found this booklet interesting? Support Converting Colors with the new Membership Option!

The pro membership hides all ads, plus gives you double the colors in the color bucket, and more awesome pro features!

[Learn more, Memberships starting at \\$2.50/m!](#)

**Follow me
on Twitter!**

@ConvertingColor