

# Converting Colors

Hex(E9C7B3)

Have a look what the booklet for  
Hex(E9C7B3) contains.

<b>Hex(E9C7B3)</b> .....	3
<i><b>Conversions</b></i> .....	4
<i><b>Details</b></i> .....	6
<i><b>Harmonies</b></i> .....	11
<i><b>Previews</b></i> .....	23
<i><b>Color Blindness Simulation</b></i> .....	26
<i><b>CSS Examples</b></i> .....	29

# **Color**

**Hex(E9C7B3)**

# Conversions

## Conversions Part 1

Format	Color
Hex	E9C7B3
RGB	233, 199, 179
RGB Percent	91%, 78%, 70%
CMY	0.0863, 0.2196, 0.2980
CMYK	0.00, 0.15, 0.23, 0.09
HSL	22°, 55%, 81%
HSV	22°, 23%, 91%
XYZ	62.1644, 61.4252, 51.2277
YIQ	206.8860, 26.6840, 0.9880

# Conversions

## Conversions Part 2

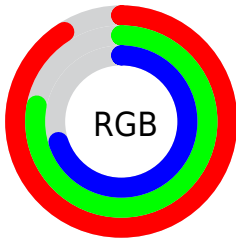
Format	Color
R <sub>YB</sub>	233, 211, 179
Decimal	15321011
CIE <sub>Lab</sub>	82.61, 8.99, 14.46
CIE <sub>LCh</sub>	83, 17.023, 58.141
Yxy	61.4252, 0.3556, 0.3514
Android (android.graphics.Color)	4293511091 (0xFFE9C7B3)
YUV	206.8860, -13.7478, 22.9020
Hunter-Lab	78.3742, 4.4267, 16.1083

# Details

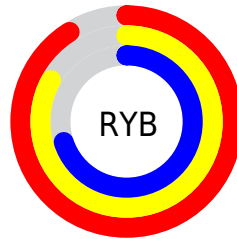
The Hex color **E9C7B3** is a light color, and the websafe version is hex **FFCCCC**. A complement of this color would be **B3D5E9**, and the grayscale version is **CFCFCF**.

A 20% lighter version of the original color is **FFFFEB**, and **B1917E** is the 20% darker color. If you saturate the color by 10%, you get **E9B89C**, and if you desaturate by 10%, it is **E9D6CA**.

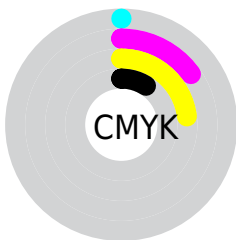
# Distribution



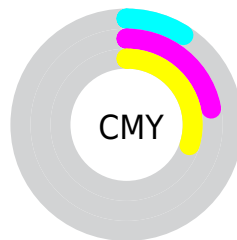
- Red (91%)
- Green (78%)
- Blue (70%)



- Red (91%)
- Yellow (83%)
- Blue (70%)



- Cyan (0%)
- Magenta (15%)
- Yellow (23%)
- Black (9%)



- Cyan (9%)
- Magenta (22%)
- Yellow (30%)

# Brightness & Saturation Gradients

These gradients show how the Hex color E9C7B3 changes by changing the brightness by 10 percent. The first figure shows a shift by +10% for each color and the second figure -10%.

Similar to the brightness gradients but the following saturation gradients show a change of the Hex color E9C7B3 by changing the saturation by 10% instead.



 E9C7B3

 E9C7B3

FFFFFF

 CDAC98

 FFFFEB

 B1917E

 967765

 7B5F4D

 624736

 493121

 321C0B

 1C0200

 000000

 E9C7B3

 E9C7B3

 E9B89C

 E9D6CA

 E9AA84

 E9E4E2

 E99B6D

 E9F3F9

 E98C56

 E9FFFF

 E97E3E

 E96F27

 E96010

 E95600

# Harmonies

## Analogous

The Analogous color harmony consists of three colors that are next to each other on the color wheel.



EFC3BF



E9C7B3



DCCCAE

# Triad

The Triadic color harmony groups three colors that are evenly spaced from another and form a triangle on the color wheel.



E9C7B3



A9D7CC



CFCAEA

# Complementary

The Complementary color scheme is a pair of colors which are on the opposite of each other on the color wheel.



E9C7B3



B3D5E9

# Split Complementary

Split-complementary colors differ from the complementary color scheme. The scheme consists of three colors, the original color and two neighbors of the complement color.



BBCFED



E9C7B3



A4D7DC

# Square

The Square scheme is like the rectangle color scheme, but the four colors are evenly spaced on the color wheel.



E9C7B3



B8D5BC



AAD4E8



E2C5DF

# Rectangle

The Rectangle color scheme consists of four colors that form a rectangle on the color wheel.



E9C7B3



D0D0AF



AAD4E8



C9CCEC



# Sweetspot

The Sweet Spot groups the original color and five complimentary colors.



E9C7B3



FFF4ED



E9B3D5



807975



000000



808080



# Same Dimension

The Same Dimension uses a secret algorithm to generate beautiful new colors.



E9C7B3



FFD2B8



E9E2B3



756E6A



B54300



361400

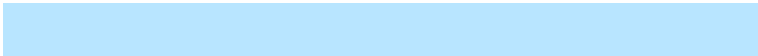


# Inverse Universe

The Inverse Universe completely reimagines the original color for something new.



B3D5E9



B8E5FF



B3BAE9



6A7175



0072B5



002236



# Previews

## White Background



This preview shows how the Hex color E9C7B3 looks on a white background.

## Color Contrast Check

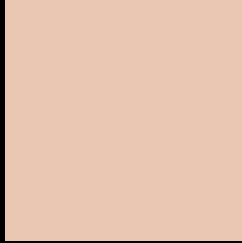
Large Text (above 18pt) WCAG AA × Fail

Any Text WCAG AA × Fail

Large Text (above 18pt) WCAG AAA × Fail

Any Text WCAG AAA × Fail

# Black Background



This preview shows how the Hex color E9C7B3 looks on a black background.

## Color Contrast Check

Large Text (above 18pt) WCAG AA ✓ Pass

Any Text WCAG AA ✓ Pass

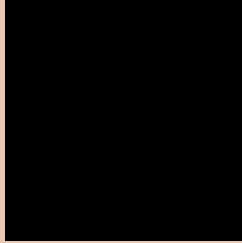
Large Text (above 18pt) WCAG AAA ✓ Pass

Any Text WCAG AAA ✓ Pass

If you want to check with other color combinations, try the [Color Contrast Checker](#).



## Hex E9C7B3 Background



This preview shows how black text looks on a background with the Hex color E9C7B3.

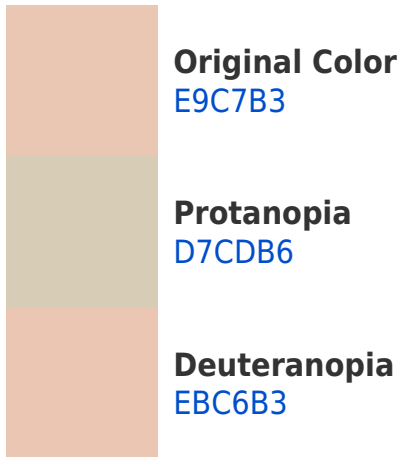


This preview shows how white text looks on a background with the Hex color E9C7B3.

# Color Blindness Simulation

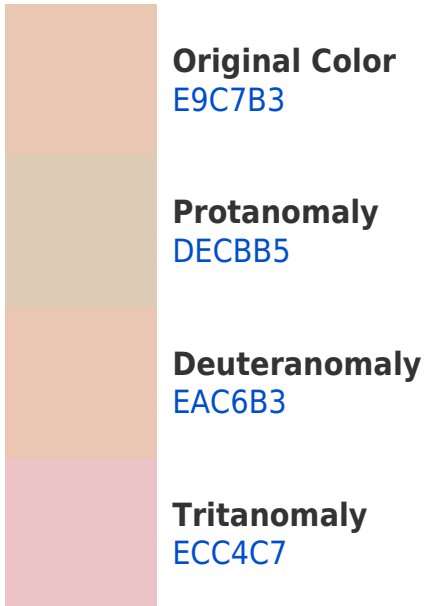
Color vision deficiency is a very complex topic, and I could not describe the different causes any better than Wikipedia does, so if you want to learn more, you should check out their [article about color blindness](#).

## Dichromacy

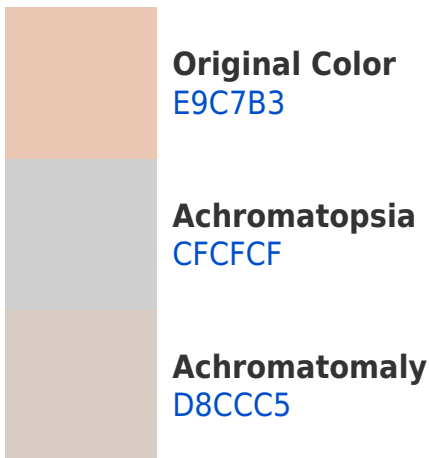




# Trichromacy



# Monochromacy



# CSS Examples

## Text

The CSS property to change the color of the text to Hex E9C7B3 is called "color". The color property can be set on classes, ids or directly on the HTML element.

This example shows how text in the color #E9C7B3 looks like.

```
.text, #text, p{  
    color:#E9C7B3  
}
```

If you want to add a text shadow in that color use the text-shadow property, you can generate a text shadow directly with our [CSS Text Shadow Generator](#).

Here you see how black text with a 4 pixel #E9C7B3 colored shadow looks like.

```
.shadow{ text-shadow: 4px 4px 2px #E9C7B3  
}
```

## Border

The CSS property to change the border of an element to Hex E9C7B3 is called "border". The border property can be set on classes, ids or directly on the HTML element.

This example shows the color as border, it can be applied via the CSS property "border" or "border-color".

```
.border, #border, table{ border:4px solid  
#E9C7B3 }
```

If only the border color should be changed use the property `border-color`.

```
.border{ border-color:#E9C7B3 }
```

If you want to add a box shadow in that color use:

Here you see how a box with a 4 pixel #E9C7B3 colored shadow looks like.

```
.boxshadow{ -moz-box-shadow:4px 4px 4px  
4px #E9C7B3; -webkit-box-shadow:4px 4px  
4px 4px #E9C7B3; box-shadow:4px 4px 4px  
4px #E9C7B3 }
```

# Background

The CSS property to change the background color of an element to Hex E9C7B3 is called "background". The background property can be set on classes, ids or directly on the HTML element.

```
.background, #background, body{  
background:#E9C7B3 }
```

If only the background color should be changed can be used:

```
.background{ background-color:#E9C7B3 }
```

This example shows the color as background, it is applied via the CSS property "background".

To optimize and compress your CSS code, you can use our [online CSS compressor and optimizer](#) based on csstidy. If you want to create a linear or radial gradient as background or border, check our [CSS Gradient Generator](#).



Hey! You found this booklet interesting? Support Converting Colors with the new Membership Option!

The pro membership hides all ads, plus gives you double the colors in the color bucket, and more awesome pro features!

**[Learn more, Memberships starting at \\$2.50/m!](#)**

**Follow me  
on Twitter!**

@ConvertingColor