

# Converting Colors

Hex(E9C8C3)

Have a look what the booklet for  
Hex(E9C8C3) contains.

<b>Hex(E9C8C3)</b> .....	3
<b><i>Conversions</i></b> .....	4
<b><i>Details</i></b> .....	6
<b><i>Harmonies</i></b> .....	11
<b><i>Previews</i></b> .....	23
<b><i>Color Blindness Simulation</i></b> .....	26
<b><i>CSS Examples</i></b> .....	29

# **Color**

**Hex(E9C8C3)**

# Conversions

## Conversions Part 1

Format	Color
Hex	E9C8C3
RGB	233, 200, 195
RGB Percent	91%, 78%, 76%
CMY	0.0863, 0.2157, 0.2353
CMYK	0.00, 0.14, 0.16, 0.09
HSL	8°, 46%, 84%
HSV	8°, 16%, 91%
XYZ	64.1089, 62.5723, 60.3285
YIQ	209.2970, 21.2730, 5.4410

# Conversions

## Conversions Part 2

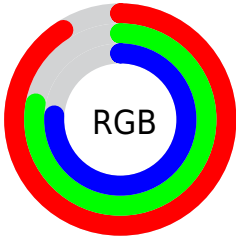
Format	Color
R <sub>Y</sub> B	233, 201, 195
Decimal	15321283
CIE Lab	83.22, 10.83, 6.80
CIE LCh	83, 12.790, 32.099
Yxy	62.5723, 0.3428, 0.3346
Android (android.graphics.Color)	4293511363 (0xFFE9C8C3)
YUV	209.2970, -7.0484, 20.7875
Hunter-Lab	79.1027, 6.2359, 10.1537

# Details

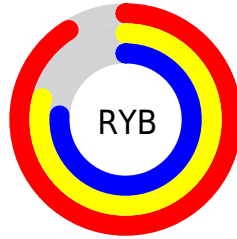
The Hex color **E9C8C3** is a light color, and the websafe version is hex **FFCCCC**. A complement of this color would be **C3E4E9**, and the grayscale version is **D1D1D1**.

A 20% lighter version of the original color is **FFFFFFC**, and **B1928D** is the 20% darker color. If you saturate the color by 10%, you get **E9B4AC**, and if you desaturate by 10%, it is **E9DCDA**.

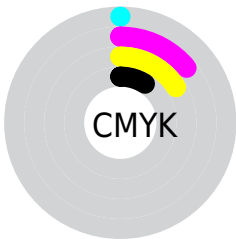
# Distribution



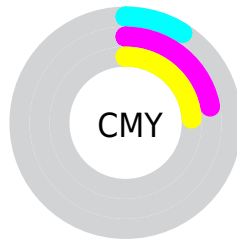
- Red (91%)
- Green (78%)
- Blue (76%)



- Red (91%)
- Yellow (79%)
- Blue (76%)



- Cyan (0%)
- Magenta (14%)
- Yellow (16%)
- Black (9%)



- Cyan (9%)
- Magenta (22%)
- Yellow (24%)

# Brightness & Saturation Gradients

These gradients show how the Hex color E9C8C3 changes by changing the brightness by 10 percent. The first figure shows a shift by +10% for each color and the second figure -10%.

Similar to the brightness gradients but the following saturation gradients show a change of the Hex color E9C8C3 by changing the saturation by 10% instead.



 E9C8C3

 E9C8C3

FFFFFF

 CDADA8

FFFFFFC

 B1928D

 967874

 7C5F5B

 634844

 4A312E

 331C19

 1F0300

 000000

 E9C8C3

 E9C8C3

 E9B4AC

 E9DCDA

 E9A094

 E9F0F2

 E98B7D

 E9FFFF

 E97766

 E9634F

 E94F37

 E93A20

 E92609

 E91F00

# Harmonies

## Analogous

The Analogous color harmony consists of three colors that are next to each other on the color wheel.



E8C7CF



E9C8C3



E3CBBA

# Triad

The Triadic color harmony groups three colors that are evenly spaced from another and form a triangle on the color wheel.



E9C8C3



BDD5C4



C4D0E7

# Complementary

The Complementary color scheme is a pair of colors which are on the opposite of each other on the color wheel.



E9C8C3



C3E4E9

# Split Complementary

Split-complementary colors differ from the complementary color scheme. The scheme consists of three colors, the original color and two neighbors of the complement color.



B7D4E4



E9C8C3



B4D7D0

# Square

The Square scheme is like the rectangle color scheme, but the four colors are evenly spaced on the color wheel.



E9C8C3



CBD2BB



B1D6DC



D3CCE4

# Rectangle

The Rectangle color scheme consists of four colors that form a rectangle on the color wheel.



E9C8C3



DDCDB8



B1D6DC



BFD1E7

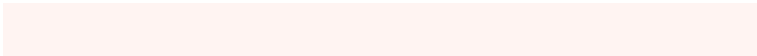


# Sweetspot

The Sweet Spot groups the original color and five complimentary colors.



E9C8C3



FFF4F2



E9C3E5



807978



000000



808080



# Same Dimension

The Same Dimension uses a secret algorithm to generate beautiful new colors.



E9C8C3



FFD3CC



E9DAC3



756B6A



B51800



360700

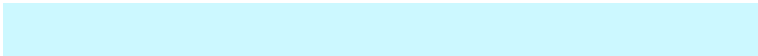


# Inverse Universe

The Inverse Universe completely reimagines the original color for something new.



C3E4E9



CCF8FF



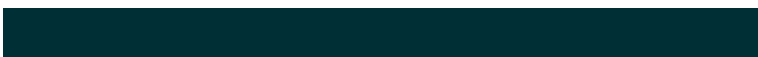
C3D2E9



6A7475



009DB5

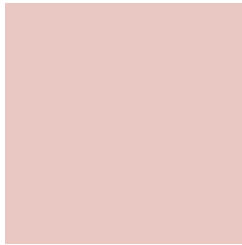


002F36



# Previews

## White Background



This preview shows how the Hex color E9C8C3 looks on a white background.

## Color Contrast Check

Large Text (above 18pt) WCAG AA × Fail

Any Text WCAG AA × Fail

Large Text (above 18pt) WCAG AAA × Fail

Any Text WCAG AAA × Fail

# Black Background



This preview shows how the Hex color E9C8C3 looks on a black background.

## Color Contrast Check

Large Text (above 18pt) WCAG AA ✓ Pass

Any Text WCAG AA ✓ Pass

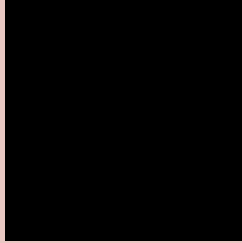
Large Text (above 18pt) WCAG AAA ✓ Pass

Any Text WCAG AAA ✓ Pass

If you want to check with other color combinations, try the [Color Contrast Checker](#).



## Hex E9C8C3 Background



This preview shows how black text looks on a background with the Hex color E9C8C3.

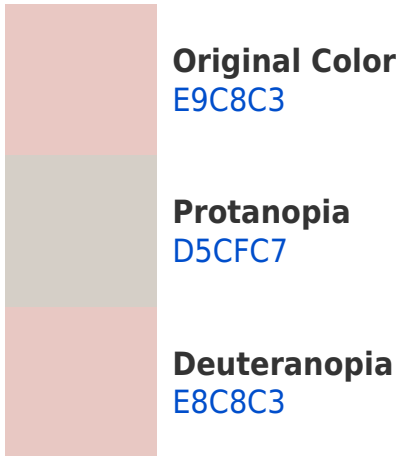


This preview shows how white text looks on a background with the Hex color E9C8C3.

# Color Blindness Simulation

Color vision deficiency is a very complex topic, and I could not describe the different causes any better than Wikipedia does, so if you want to learn more, you should check out their [article about color blindness](#).

## Dichromacy





**Tritanopia**  
EBC5D5

# Trichromacy



**Original Color**  
E9C8C3

**Protanomaly**  
DCCCC6

**Deuteranomaly**  
E8C8C3

**Tritanomaly**  
EAC6CE

# Monochromacy



**Original Color**  
E9C8C3

**Achromatopsia**  
D1D1D1

**Achromatomaly**  
DACECC

# CSS Examples

## Text

The CSS property to change the color of the text to Hex E9C8C3 is called "color". The color property can be set on classes, ids or directly on the HTML element.

This example shows how text in the color #E9C8C3 looks like.

```
.text, #text, p{  
    color:#E9C8C3  
}
```

If you want to add a text shadow in that color use the text-shadow property, you can generate a text shadow directly with our [CSS Text Shadow Generator](#).

Here you see how black text with a 4 pixel #E9C8C3 colored shadow looks like.

```
.shadow{ text-shadow: 4px 4px 2px #E9C8C3
}
```

## Border

The CSS property to change the border of an element to Hex E9C8C3 is called "border". The border property can be set on classes, ids or directly on the HTML element.

This example shows the color as border, it can be applied via the CSS property "border" or "border-color".

```
.border, #border, table{ border:4px solid
#E9C8C3 }
```

If only the border color should be changed use the property `border-color`.

```
.border{ border-color:#E9C8C3 }
```

If you want to add a box shadow in that color use:

Here you see how a box with a 4 pixel #E9C8C3 colored shadow looks like.

```
.boxshadow{ -moz-box-shadow:4px 4px 4px  
4px #E9C8C3; -webkit-box-shadow:4px 4px  
4px 4px #E9C8C3; box-shadow:4px 4px 4px  
4px #E9C8C3 }
```

# Background

The CSS property to change the background color of an element to Hex E9C8C3 is called "background". The background property can be set on classes, ids or directly on the HTML element.

```
.background, #background, body{  
background:#E9C8C3 }
```

If only the background color should be changed can be used:

```
.background{ background-color:#E9C8C3 }
```

This example shows the color as background, it is applied via the CSS property "background".

To optimize and compress your CSS code, you can use our [online CSS compressor and optimizer](#) based on csstidy. If you want to create a linear or radial gradient as background or border, check our [CSS Gradient Generator](#).



Hey! You found this booklet interesting? Support Converting Colors with the new Membership Option!

The pro membership hides all ads, plus gives you double the colors in the color bucket, and more awesome pro features!

**[Learn more, Memberships starting at \\$2.50/m!](#)**

**Follow me  
on Twitter!**

@ConvertingColor