

Converting Colors

Hex(E9C9B9)

Have a look what the booklet for
Hex(E9C9B9) contains.

Hex(E9C9B9)	3
<i>Conversions</i>	4
<i>Details</i>	6
<i>Harmonies</i>	11
<i>Previews</i>	23
<i>Color Blindness Simulation</i>	26
<i>CSS Examples</i>	29

Color

Hex(E9C9B9)

Conversions

Conversions Part 1

Format	Color
Hex	E9C9B9
RGB	233, 201, 185
RGB Percent	91%, 79%, 73%
CMY	0.0863, 0.2118, 0.2745
CMYK	0.00, 0.14, 0.21, 0.09
HSL	20°, 52%, 82%
HSV	20°, 21%, 91%
XYZ	63.2479, 62.5997, 54.6484
YIQ	208.7440, 24.2080, 1.8080

Conversions

Conversions Part 2

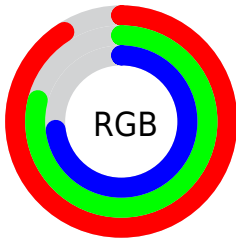
Format	Color
R _Y B	233, 209, 185
Decimal	15321529
CIE Lab	83.23, 8.80, 12.15
CIE LCh	83, 15.000, 54.078
Yxy	62.5997, 0.3504, 0.3468
Android (android.graphics.Color)	4293511609 (0xFFE9C9B9)
YUV	208.7440, -11.7058, 21.2725
Hunter-Lab	79.1200, 4.2315, 14.4322

Details

The Hex color **E9C9B9** is a light color, and the websafe version is hex **FFCCCC**. A complement of this color would be **B9D9E9**, and the grayscale version is **D1D1D1**.

A 20% lighter version of the original color is **FFFFFF1**, and **B19384** is the 20% darker color. If you saturate the color by 10%, you get **E9B9A2**, and if you desaturate by 10%, it is **E9D9D0**.

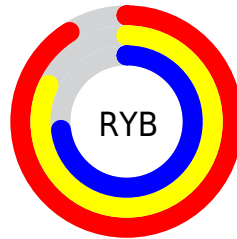
Distribution



Red (91%)

Green (79%)

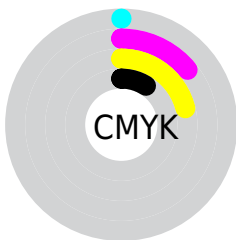
Blue (73%)



Red (91%)

Yellow (82%)

Blue (73%)

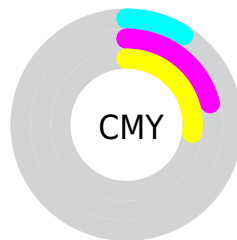


Cyan (0%)

Magenta (14%)

Yellow (21%)

Black (9%)



Cyan (9%)

Magenta (21%)

Yellow (27%)

Brightness & Saturation Gradients

These gradients show how the Hex color E9C9B9 changes by changing the brightness by 10 percent. The first figure shows a shift by +10% for each color and the second figure -10%.

Similar to the brightness gradients but the following saturation gradients show a change of the Hex color E9C9B9 by changing the saturation by 10% instead.

 E9C9B9

FFFFFF

 FFFFF1

 E9C9B9

 CDAE9E

 B19384

 96796B

 7C6052

 62493B

 4A3226

 321D11

 1D0400

 000000

 E9C9B9

 E9C9B9

 E9B9A2

 E9D9D0

 E9AA8A

 E9E8E8

 E99A73

 E9F8FF

 E98B5C

 E9FFFF

 E97B44

 E96C2D

 E95C16

 E94E00

Harmonies

Analogous

The Analogous color harmony consists of three colors that are next to each other on the color wheel.



EEC6C4



E9C9B9



DECDB4

Triad

The Triadic color harmony groups three colors that are evenly spaced from another and form a triangle on the color wheel.



E9C9B9



B1D8CC



CFCDE9

Complementary

The Complementary color scheme is a pair of colors which are on the opposite of each other on the color wheel.



E9C9B9



B9D9E9

Split Complementary

Split-complementary colors differ from the complementary color scheme. The scheme consists of three colors, the original color and two neighbors of the complement color.



BDD1EB



E9C9B9



ABD7DA

Square

The Square scheme is like the rectangle color scheme, but the four colors are evenly spaced on the color wheel.



E9C9B9



BED6BE



B0D5E6



DFC8E0

Rectangle

The Rectangle color scheme consists of four colors that form a rectangle on the color wheel.



E9C9B9



D4D0B4



B0D5E6



C9CEEA

Sweetspot

The Sweet Spot groups the original color and five complimentary colors.



E9C9B9



FFF5F0



E9B9D9



807A77



000000



808080

Same Dimension

The Same Dimension uses a secret algorithm to generate beautiful new colors.



E9C9B9



FFD4BF



E9E1B9



756D6A



B53C00



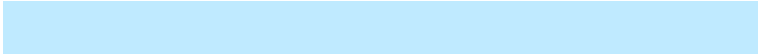
361200

Inverse Universe

The Inverse Universe completely reimagines the original color for something new.



B9D9E9



BFEAFF



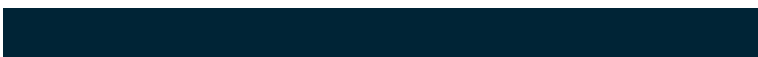
B9C1E9



6A7175



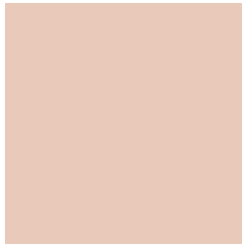
0079B5



002436

Previews

White Background



This preview shows how the Hex color E9C9B9 looks on a white background.

Color Contrast Check

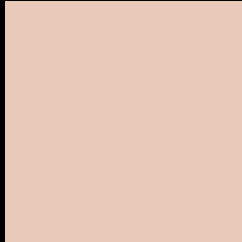
Large Text (above 18pt) WCAG AA × Fail

Any Text WCAG AA × Fail

Large Text (above 18pt) WCAG AAA × Fail

Any Text WCAG AAA × Fail

Black Background



This preview shows how the Hex color E9C9B9 looks on a black background.

Color Contrast Check

Large Text (above 18pt) WCAG AA ✓ Pass

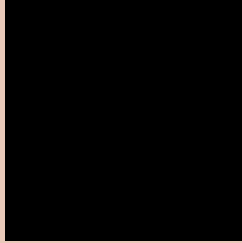
Any Text WCAG AA ✓ Pass

Large Text (above 18pt) WCAG AAA ✓ Pass

Any Text WCAG AAA ✓ Pass

If you want to check with other color combinations, try the [Color Contrast Checker](#).

Hex E9C9B9 Background



This preview shows how black text looks on a background with the Hex color E9C9B9.

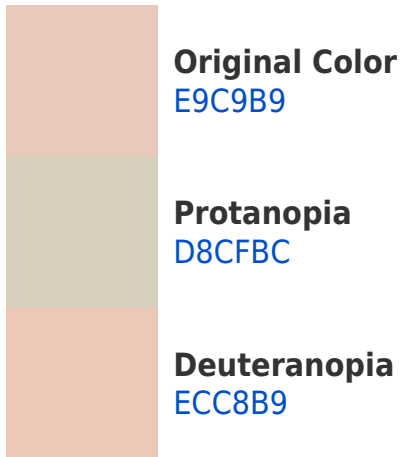


This preview shows how white text looks on a background with the Hex color E9C9B9.

Color Blindness Simulation

Color vision deficiency is a very complex topic, and I could not describe the different causes any better than Wikipedia does, so if you want to learn more, you should check out their [article about color blindness](#).

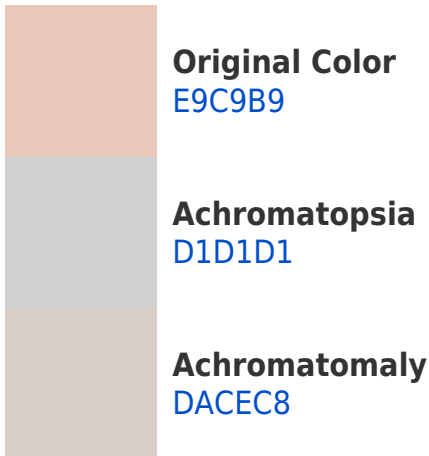
Dichromacy



Trichromacy



Monochromacy



CSS Examples

Text

The CSS property to change the color of the text to Hex E9C9B9 is called "color". The color property can be set on classes, ids or directly on the HTML element.

This example shows how text in the color #E9C9B9 looks like.

```
.text, #text, p{  
    color:#E9C9B9  
}
```

If you want to add a text shadow in that color use the text-shadow property, you can generate a text shadow directly with our [CSS Text Shadow Generator](#).

Here you see how black text with a 4 pixel #E9C9B9 colored shadow looks like.

```
.shadow{ text-shadow: 4px 4px 2px #E9C9B9
}
```

Border

The CSS property to change the border of an element to Hex E9C9B9 is called "border". The border property can be set on classes, ids or directly on the HTML element.

This example shows the color as border, it can be applied via the CSS property "border" or "border-color".

```
.border, #border, table{ border:4px solid
#E9C9B9 }
```

If only the border color should be changed use the property `border-color`.

```
.border{ border-color:#E9C9B9 }
```

If you want to add a box shadow in that color use:

Here you see how a box with a 4 pixel #E9C9B9 colored shadow looks like.

```
.boxshadow{ -moz-box-shadow:4px 4px 4px  
4px #E9C9B9; -webkit-box-shadow:4px 4px  
4px 4px #E9C9B9; box-shadow:4px 4px 4px  
4px #E9C9B9 }
```

Background

The CSS property to change the background color of an element to Hex E9C9B9 is called "background". The background property can be set on classes, ids or directly on the HTML element.

```
.background, #background, body{  
background:#E9C9B9 }
```

If only the background color should be changed can be used:

```
.background{ background-color:#E9C9B9 }
```

This example shows the color as background, it is applied via the CSS property "background".

To optimize and compress your CSS code, you can use our [online CSS compressor and optimizer](#) based on csstidy. If you want to create a linear or radial gradient as background or border, check our [CSS Gradient Generator](#).

Hey! You found this booklet interesting? Support Converting Colors with the new Membership Option!

The pro membership hides all ads, plus gives you double the colors in the color bucket, and more awesome pro features!

[Learn more, Memberships starting at \\$2.50/m!](#)

**Follow me
on Twitter!**

@ConvertingColor