

Converting Colors

Hex(E9CACF)

Have a look what the booklet for
Hex(E9CACF) contains.

Hex(E9CACF)	3
<i>Conversions</i>	4
<i>Details</i>	6
<i>Harmonies</i>	11
<i>Previews</i>	23
<i>Color Blindness Simulation</i>	26
<i>CSS Examples</i>	29

Color

Hex(E9CACF)

Conversions

Conversions Part 1

Format	Color
Hex	E9CACF
RGB	233, 202, 207
RGB Percent	91%, 79%, 81%
CMY	0.0863, 0.2078, 0.1882
CMYK	0.00, 0.13, 0.11, 0.09
HSL	350°, 41%, 85%
HSV	350°, 13%, 91%
XYZ	65.9873, 64.0697, 67.9203
YIQ	211.8390, 16.8710, 8.1270

Conversions

Conversions Part 2

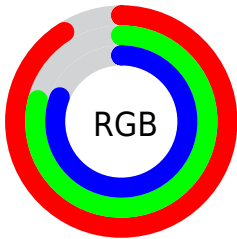
Format	Color
R _Y B	233, 202, 207
Decimal	15321807
CIE Lab	84.00, 11.69, 1.53
CIE LCh	84, 11.792, 7.456
Yxy	64.0697, 0.3333, 0.3236
Android (android.graphics.Color)	4293511887 (0xFFE9CACF)
YUV	211.8390, -2.3856, 18.5582
Hunter-Lab	80.0435, 7.0778, 5.7205

Details

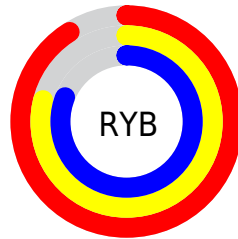
The Hex color **E9CACF** is a light color, and the websafe version is hex **FFCCCC**. A complement of this color would be **CAE9E4**, and the grayscale version is **D4D4D4**.

A 20% lighter version of the original color is **FFFFFF**, and **B19499** is the 20% darker color. If you saturate the color by 10%, you get **E9B3BB**, and if you desaturate by 10%, it is **E9E1E3**.

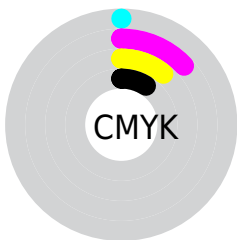
Distribution



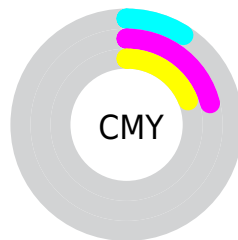
- Red (91%)
- Green (79%)
- Blue (81%)



- Red (91%)
- Yellow (79%)
- Blue (81%)



- Cyan (0%)
- Magenta (13%)
- Yellow (11%)
- Black (9%)



- Cyan (9%)
- Magenta (21%)
- Yellow (19%)

Brightness & Saturation Gradients

These gradients show how the Hex color E9CACF changes by changing the brightness by 10 percent. The first figure shows a shift by +10% for each color and the second figure -10%.

Similar to the brightness gradients but the following saturation gradients show a change of the Hex color E9CACF by changing the saturation by 10% instead.

 E9CACF

 E9CACF

FFFFFF

 CDAFB3

 B19499

 967A7F

 7C6166

 63494E

 4B3337

 341D22

 20050B

 000000

 E9CACF

 E9CACF

 E9B3BB

 E9E1E3

 E99BA8

 E9F9F6

 E98494

 E9FFFF

 E96D81

 E9566D

 E93E5A

 E92746

 E91033

 E90026

Harmonies

Analogous

The Analogous color harmony consists of three colors that are next to each other on the color wheel.



E3CBDA



E9CACF



E9CBC4

Triad

The Triadic color harmony groups three colors that are evenly spaced from another and form a triangle on the color wheel.



E9CACF



CBD5C0



BDD5E6

Complementary

The Complementary color scheme is a pair of colors which are on the opposite of each other on the color wheel.



E9CACF



CAE9E4

Split Complementary

Split-complementary colors differ from the complementary color scheme. The scheme consists of three colors, the original color and two neighbors of the complement color.



B6D7DF



E9CACF



BFD7C9

Square

The Square scheme is like the rectangle color scheme, but the four colors are evenly spaced on the color wheel.



E9CACF



D8D2BC



B7D8D4



C9D1E7

Rectangle

The Rectangle color scheme consists of four colors that form a rectangle on the color wheel.



E9CACF



E5CDBF



B7D8D4



BAD6E4

Sweetspot

The Sweet Spot groups the original color and five complimentary colors.



E9CACF



FFF5F6



E4CAE9



80797A



000000



808080

Same Dimension

The Same Dimension uses a secret algorithm to generate beautiful new colors.



E9CACF



FFD6DD



E9D4CA



756A6B



B5001D



360009

Inverse Universe

The Inverse Universe completely reimagines the original color for something new.



E9CACF



FFD6DD



CADFE9



756A6B



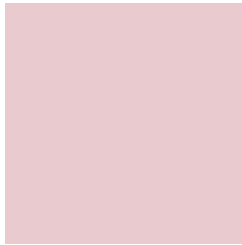
B5001D



360009

Previews

White Background



This preview shows how the Hex color E9CACF looks on a white background.

Color Contrast Check

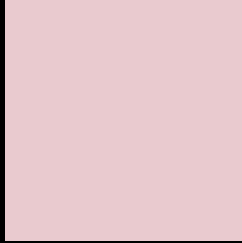
Large Text (above 18pt) WCAG AA × Fail

Any Text WCAG AA × Fail

Large Text (above 18pt) WCAG AAA × Fail

Any Text WCAG AAA × Fail

Black Background



This preview shows how the Hex color E9CACF looks on a black background.

Color Contrast Check

Large Text (above 18pt) WCAG AA ✓ Pass

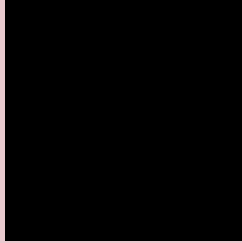
Any Text WCAG AA ✓ Pass

Large Text (above 18pt) WCAG AAA ✓ Pass

Any Text WCAG AAA ✓ Pass

If you want to check with other color combinations, try the [Color Contrast Checker](#).

Hex E9CACF Background



This preview shows how black text looks on a background with the Hex color E9CACF.

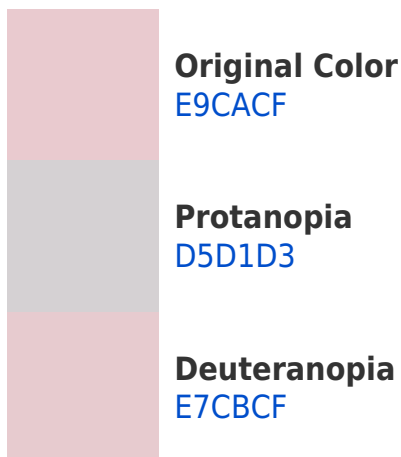


This preview shows how white text looks on a background with the Hex color E9CACF.

Color Blindness Simulation

Color vision deficiency is a very complex topic, and I could not describe the different causes any better than Wikipedia does, so if you want to learn more, you should check out their [article about color blindness](#).

Dichromacy





Tritanopia
EAC9D8

Trichromacy



Original Color
E9CACF

Protanomaly
DCCED2

Deuteranomaly
E8CBFC

Tritanomaly
EAC9D5

Monochromacy



Original Color
E9CACF

Achromatopsia
D4D4D4

Achromatomaly
DCD0D2

CSS Examples

Text

The CSS property to change the color of the text to Hex E9CACF is called "color". The color property can be set on classes, ids or directly on the HTML element.

This example shows how text in the color #E9CACF looks like.

```
.text, #text, p{  
    color:#E9CACF  
}
```

If you want to add a text shadow in that color use the text-shadow property, you can generate a text shadow directly with our [CSS Text Shadow Generator](#).

Here you see how black text with a 4 pixel #E9CACF colored shadow looks like.

```
.shadow{ text-shadow: 4px 4px 2px #E9CACF
}
```

Border

The CSS property to change the border of an element to Hex E9CACF is called "border". The border property can be set on classes, ids or directly on the HTML element.

This example shows the color as border, it can be applied via the CSS property "border" or "border-color".

```
.border, #border, table{ border:4px solid
#E9CACF }
```

If only the border color should be changed use the property `border-color`.

```
.border{ border-color:#E9CACF }
```

If you want to add a box shadow in that color use:

Here you see how a box with a 4 pixel #E9CACF colored shadow looks like.

```
.boxshadow{ -moz-box-shadow:4px 4px 4px  
4px #E9CACF; -webkit-box-shadow:4px 4px  
4px 4px #E9CACF; box-shadow:4px 4px 4px  
4px #E9CACF }
```

Background

The CSS property to change the background color of an element to Hex E9CACF is called "background". The background property can be set on classes, ids or directly on the HTML element.

```
.background, #background, body{  
background:#E9CACF }
```

If only the background color should be changed can be used:

```
.background{ background-color:#E9CACF }
```

This example shows the color as background, it is applied via the CSS property "background".

To optimize and compress your CSS code, you can use our [online CSS compressor and optimizer](#) based on csstidy. If you want to create a linear or radial gradient as background or border, check our [CSS Gradient Generator](#).

Hey! You found this booklet interesting? Support Converting Colors with the new Membership Option!

The pro membership hides all ads, plus gives you double the colors in the color bucket, and more awesome pro features!

[Learn more, Memberships starting at \\$2.50/m!](#)

**Follow me
on Twitter!**

@ConvertingColor