

Converting Colors

Hex(E9CBCB)

Have a look what the booklet for
Hex(E9CBCB) contains.

Hex(E9CBCB)	3
<i>Conversions</i>	4
<i>Details</i>	6
<i>Harmonies</i>	11
<i>Previews</i>	23
<i>Color Blindness Simulation</i>	26
<i>CSS Examples</i>	29

Color

Hex(E9CBCB)

Conversions

Conversions Part 1

Format	Color
Hex	E9CBCB
RGB	233, 203, 203
RGB Percent	91%, 80%, 80%
CMY	0.0863, 0.2039, 0.2039
CMYK	0.00, 0.13, 0.13, 0.09
HSL	0°, 41%, 85%
HSV	0°, 13%, 91%
XYZ	65.7397, 64.3473, 65.4553
YIQ	211.9700, 17.8800, 6.3600

Conversions

Conversions Part 2

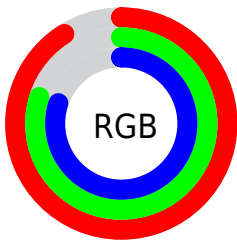
Format	Color
R _Y B	233, 203, 203
Decimal	15322059
CIE Lab	84.15, 10.52, 3.87
CIE LCh	84, 11.206, 20.212
Yxy	64.3473, 0.3362, 0.3291
Android (android.graphics.Color)	4293512139 (0xFFE9CBCB)
YUV	211.9700, -4.4222, 18.4433
Hunter-Lab	80.2168, 5.9060, 7.7723

Details

The Hex color **E9CBCB** is a light color, and the websafe version is hex **FFCCCC**. A complement of this color would be **CBE9E9**, and the grayscale version is **D4D4D4**.

A 20% lighter version of the original color is **FFFFFF**, and **B19595** is the 20% darker color. If you saturate the color by 10%, you get **E9B4B4**, and if you desaturate by 10%, it is **E9E2E2**.

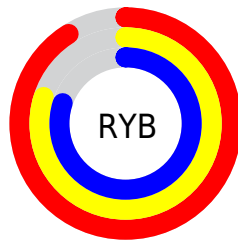
Distribution



Red (91%)

Green (80%)

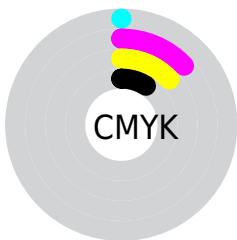
Blue (80%)



Red (91%)

Yellow (80%)

Blue (80%)

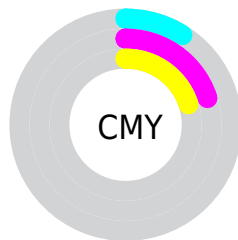


Cyan (0%)

Magenta (13%)

Yellow (13%)

Black (9%)



Cyan (9%)

Magenta (20%)

Yellow (20%)

Brightness & Saturation Gradients

These gradients show how the Hex color E9CBCB changes by changing the brightness by 10 percent. The first figure shows a shift by +10% for each color and the second figure -10%.

Similar to the brightness gradients but the following saturation gradients show a change of the Hex color E9CBCB by changing the saturation by 10% instead.

 E9CBCB

 E9CBCB

FFFFFF

 CDB0B0

 B19595

 967B7B

 7C6262

 634A4B

 4B3434

 341E1F

 200706

 000000

 E9CBCB

 E9CBCB

 E9B4B4

 E9E2E2

 E99C9C

 E9FAFA

 E98585


 E9FFFF

 E96E6E

 E95656

 E93F3F

 E92828

 E91111

 E90000

Harmonies

Analogous

The Analogous color harmony consists of three colors that are next to each other on the color wheel.



E6CBD6



E9CBCB



E6CDC2

Triad

The Triadic color harmony groups three colors that are evenly spaced from another and form a triangle on the color wheel.



E9CBCB



C7D6C4



C3D4E6

Complementary

The Complementary color scheme is a pair of colors which are on the opposite of each other on the color wheel.



E9CBCB



CBE9E9

Split Complementary

Split-complementary colors differ from the complementary color scheme. The scheme consists of three colors, the original color and two neighbors of the complement color.



BAD7E2



E9CBCB



BDD8CE

Square

The Square scheme is like the rectangle color scheme, but the four colors are evenly spaced on the color wheel.



E9CBCB



D3D3BE



B8D8D9



D0D0E6

Rectangle

The Rectangle color scheme consists of four colors that form a rectangle on the color wheel.



E9CBCB



E1CFBE



B8D8D9



BFD5E5

Sweetspot

The Sweet Spot groups the original color and five complimentary colors.



E9CBCB



FFF5F5



E9CBE9



807979



000000



808080

Same Dimension

The Same Dimension uses a secret algorithm to generate beautiful new colors.



E9CBCB



FFD9D9



E9DACB



756A6A



B50000



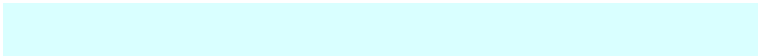
360000

Inverse Universe

The Inverse Universe completely reimagines the original color for something new.



CBE9E9



D9FFFF



CBD4E9



6A7575



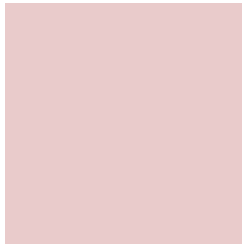
00B5B5



003636

Previews

White Background



This preview shows how the Hex color E9CBCB looks on a white background.

Color Contrast Check

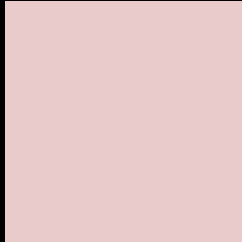
Large Text (above 18pt) WCAG AA × Fail

Any Text WCAG AA × Fail

Large Text (above 18pt) WCAG AAA × Fail

Any Text WCAG AAA × Fail

Black Background



This preview shows how the Hex color E9CBCB looks on a black background.

Color Contrast Check

Large Text (above 18pt) WCAG AA ✓ Pass

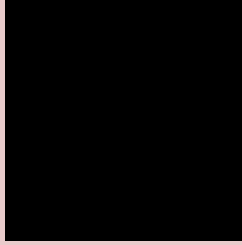
Any Text WCAG AA ✓ Pass

Large Text (above 18pt) WCAG AAA ✓ Pass

Any Text WCAG AAA ✓ Pass

If you want to check with other color combinations, try the [Color Contrast Checker](#).

Hex E9CBCB Background



This preview shows how black text looks on a background with the Hex color E9CBCB.

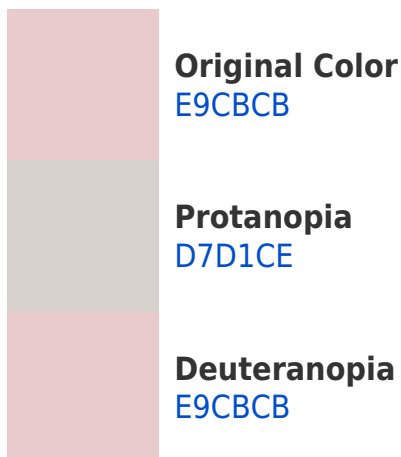


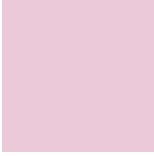
This preview shows how white text looks on a background with the Hex color E9CBCB.

Color Blindness Simulation

Color vision deficiency is a very complex topic, and I could not describe the different causes any better than Wikipedia does, so if you want to learn more, you should check out their [article about color blindness](#).

Dichromacy





Tritanopia
EBC9D9

Trichromacy



Original Color
E9CBCB

Protanomaly
DECFCD

Deuteranomaly
E9CBCB

Tritanomaly
EACAD4

Monochromacy



Original Color
E9CBCB

Achromatopsia
D4D4D4

Achromatomaly
DCD1D1

CSS Examples

Text

The CSS property to change the color of the text to Hex E9CBCB is called "color". The color property can be set on classes, ids or directly on the HTML element.

This example shows how text in the color #E9CBCB looks like.

```
.text, #text, p{  
    color:#E9CBCB  
}
```

If you want to add a text shadow in that color use the text-shadow property, you can generate a text shadow directly with our [CSS Text Shadow Generator](#).

Here you see how black text with a 4 pixel #E9CBCB colored shadow looks like.

```
.shadow{ text-shadow: 4px 4px 2px #E9CBCB
}
```

Border

The CSS property to change the border of an element to Hex E9CBCB is called "border". The border property can be set on classes, ids or directly on the HTML element.

This example shows the color as border, it can be applied via the CSS property "border" or "border-color".

```
.border, #border, table{ border:4px solid
#E9CBCB }
```

If only the border color should be changed use the property `border-color`.

```
.border{ border-color:#E9CBCB }
```

If you want to add a box shadow in that color use:

Here you see how a box with a 4 pixel #E9CBCB colored shadow looks like.

```
.boxshadow{ -moz-box-shadow:4px 4px 4px  
4px #E9CBCB; -webkit-box-shadow:4px 4px  
4px 4px #E9CBCB; box-shadow:4px 4px 4px  
4px #E9CBCB }
```

Background

The CSS property to change the background color of an element to Hex E9CBCB is called "background". The background property can be set on classes, ids or directly on the HTML element.

```
.background, #background, body{  
background:#E9CBCB }
```

If only the background color should be changed can be used:

```
.background{ background-color:#E9CBCB }
```

This example shows the color as background, it is applied via the CSS property "background".

To optimize and compress your CSS code, you can use our [online CSS compressor and optimizer](#) based on csstidy. If you want to create a linear or radial gradient as background or border, check our [CSS Gradient Generator](#).

Hey! You found this booklet interesting? Support Converting Colors with the new Membership Option!

The pro membership hides all ads, plus gives you double the colors in the color bucket, and more awesome pro features!

[Learn more, Memberships starting at \\$2.50/m!](#)

**Follow me
on Twitter!**

@ConvertingColor