

# Converting Colors

Hex(E9CBCE)

Have a look what the booklet for  
Hex(E9CBCE) contains.

<b>Hex(E9CBCE)</b> .....	3
<i><b>Conversions</b></i> .....	4
<i><b>Details</b></i> .....	6
<i><b>Harmonies</b></i> .....	11
<i><b>Previews</b></i> .....	23
<i><b>Color Blindness Simulation</b></i> .....	26
<i><b>CSS Examples</b></i> .....	29

# **Color**

**Hex(E9CBCE)**

# Conversions

## Conversions Part 1

<b>Format</b>	<b>Color</b>
Hex	E9CBCE
RGB	233, 203, 206
RGB Percent	91%, 80%, 81%
CMY	0.0863, 0.2039, 0.1922
CMYK	0.00, 0.13, 0.12, 0.09
HSL	354°, 41%, 85%
HSV	354°, 13%, 91%
XYZ	66.1008, 64.4917, 67.3568
YIQ	212.3120, 16.9170, 7.2930

# Conversions

## Conversions Part 2

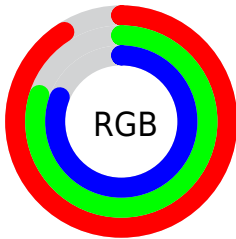
Format	Color
R <sub>Y</sub> B	233, 203, 206
Decimal	15322062
CIE Lab	84.22, 11.00, 2.38
CIE LCh	84, 11.256, 12.216
Yxy	64.4917, 0.3339, 0.3258
Android (android.graphics.Color)	4293512142 (0xFFE9CBCE)
YUV	212.3120, -3.1118, 18.1434
Hunter-Lab	80.3068, 6.3872, 6.4856

# Details

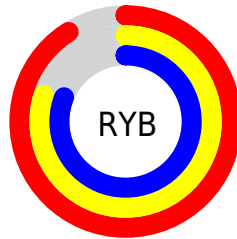
The Hex color **E9CBCE** is a light color, and the websafe version is hex **FFCCCC**. A complement of this color would be **CBE9E6**, and the grayscale version is **D4D4D4**.

A 20% lighter version of the original color is **FFFFFF**, and **B19598** is the 20% darker color. If you saturate the color by 10%, you get **E9B4B9**, and if you desaturate by 10%, it is **E9E2E3**.

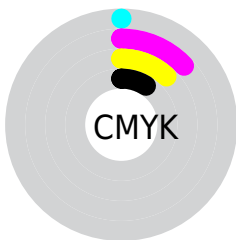
# Distribution



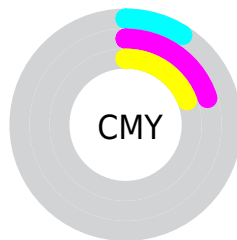
- Red (91%)
- Green (80%)
- Blue (81%)



- Red (91%)
- Yellow (80%)
- Blue (81%)



- Cyan (0%)
- Magenta (13%)
- Yellow (12%)
- Black (9%)



- Cyan (9%)
- Magenta (20%)
- Yellow (19%)

# Brightness & Saturation Gradients

These gradients show how the Hex color E9CBCE changes by changing the brightness by 10 percent. The first figure shows a shift by +10% for each color and the second figure -10%.

Similar to the brightness gradients but the following saturation gradients show a change of the Hex color E9CBCE by changing the saturation by 10% instead.



 E9CBCE

 E9CBCE

FFFFFF

 CDB0B3

 B19598

 967B7E

 7C6265

 634A4D

 4B3436

 341E21

 20070A

 000000

 E9CBCE

 E9CBCE

 E9B4B9

 E9E2E3

 E99CA4

 E9FAF8

 E9858F


 E9FFFF

 E96E7A

 E95665

 E93F50

 E9283B

 E91126

 E90017

# Harmonies

## Analogous

The Analogous color harmony consists of three colors that are next to each other on the color wheel.



E4CCD9



E9CBCE



E8CCC4

# Triad

The Triadic color harmony groups three colors that are evenly spaced from another and form a triangle on the color wheel.



E9CBCE



CAD6C2



C0D5E6

# Complementary

The Complementary color scheme is a pair of colors which are on the opposite of each other on the color wheel.



E9CBCE



CBE9E6

# Split Complementary

Split-complementary colors differ from the complementary color scheme. The scheme consists of three colors, the original color and two neighbors of the complement color.



B9D7E0



E9CBCE



BFD8CB

# Square

The Square scheme is like the rectangle color scheme, but the four colors are evenly spaced on the color wheel.



E9CBCE



D6D3BD



B9D9D6



CCD1E7

# Rectangle

The Rectangle color scheme consists of four colors that form a rectangle on the color wheel.



E9CBCE



E4CEC0



B9D9D6



BDD6E4



# Sweetspot

The Sweet Spot groups the original color and five complimentary colors.



E9CBCE



FFF5F6



E6CBE9



80797A



000000



808080



# Same Dimension

The Same Dimension uses a secret algorithm to generate beautiful new colors.



E9CBCE



FFD9DD



E9D6CB



756A6B



B50012



360005



# Inverse Universe

The Inverse Universe completely reimagines the original color for something new.



E9CBCE



FFD9DD



CBDDE9



756A6B



B50012



360005



# Previews

## White Background



This preview shows how the Hex color E9CBCE looks on a white background.

## Color Contrast Check

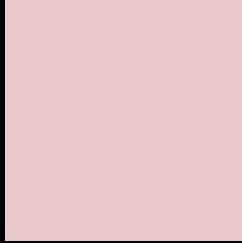
Large Text (above 18pt) WCAG AA × Fail

Any Text WCAG AA × Fail

Large Text (above 18pt) WCAG AAA × Fail

Any Text WCAG AAA × Fail

# Black Background



This preview shows how the Hex color E9CBCE looks on a black background.

## Color Contrast Check

Large Text (above 18pt) WCAG AA ✓ Pass

Any Text WCAG AA ✓ Pass

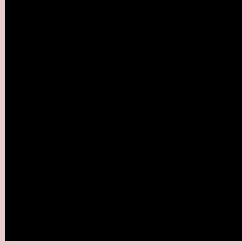
Large Text (above 18pt) WCAG AAA ✓ Pass

Any Text WCAG AAA ✓ Pass

If you want to check with other color combinations, try the [Color Contrast Checker](#).



## Hex E9CBCE Background



This preview shows how black text looks on a background with the Hex color E9CBCE.

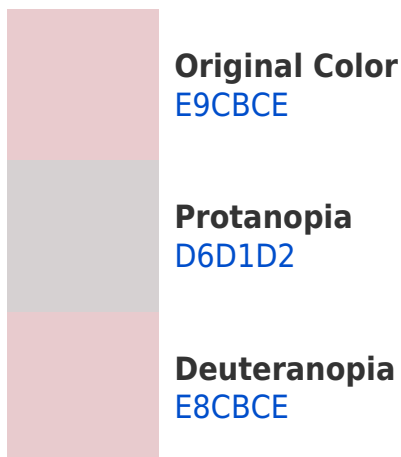


This preview shows how white text looks on a background with the Hex color E9CBCE.

# Color Blindness Simulation

Color vision deficiency is a very complex topic, and I could not describe the different causes any better than Wikipedia does, so if you want to learn more, you should check out their [article about color blindness](#).

## Dichromacy





**Tritanopia**  
EAC9D9

# Trichromacy



**Original Color**  
E9CBCE

**Protanomaly**  
DDCFD1

**Deuteranomaly**  
E8CBCE

**Tritanomaly**  
EACAD5

# Monochromacy



**Original Color**  
E9CBCE

**Achromatopsia**  
D4D4D4

**Achromatomaly**  
DCD1D2

# CSS Examples

## Text

The CSS property to change the color of the text to Hex E9CBCE is called "color". The color property can be set on classes, ids or directly on the HTML element.

This example shows how text in the color #E9CBCE looks like.

```
.text, #text, p{  
    color:#E9CBCE  
}
```

If you want to add a text shadow in that color use the text-shadow property, you can generate a text shadow directly with our [CSS Text Shadow Generator](#).

Here you see how black text with a 4 pixel #E9CBCE colored shadow looks like.

```
.shadow{ text-shadow: 4px 4px 2px #E9CBCE
}
```

## Border

The CSS property to change the border of an element to Hex E9CBCE is called "border". The border property can be set on classes, ids or directly on the HTML element.

This example shows the color as border, it can be applied via the CSS property "border" or "border-color".

```
.border, #border, table{ border:4px solid
#E9CBCE }
```

If only the border color should be changed use the property `border-color`.

```
.border{ border-color:#E9CBCE }
```

If you want to add a box shadow in that color use:

Here you see how a box with a 4 pixel #E9CBCE colored shadow looks like.

```
.boxshadow{ -moz-box-shadow:4px 4px 4px  
4px #E9CBCE; -webkit-box-shadow:4px 4px  
4px 4px #E9CBCE; box-shadow:4px 4px 4px  
4px #E9CBCE }
```

# Background

The CSS property to change the background color of an element to Hex E9CBCE is called "background". The background property can be set on classes, ids or directly on the HTML element.

```
.background, #background, body{  
background:#E9CBCE }
```

If only the background color should be changed can be used:

```
.background{ background-color:#E9CBCE }
```

This example shows the color as background, it is applied via the CSS property "background".

To optimize and compress your CSS code, you can use our [online CSS compressor and optimizer](#) based on csstidy. If you want to create a linear or radial gradient as background or border, check our [CSS Gradient Generator](#).



Hey! You found this booklet interesting? Support Converting Colors with the new Membership Option!

The pro membership hides all ads, plus gives you double the colors in the color bucket, and more awesome pro features!

**[Learn more, Memberships starting at \\$2.50/m!](#)**

**Follow me  
on Twitter!**

@ConvertingColor