

Converting Colors

Hex(E9CFC2)

Have a look what the booklet for
Hex(E9CFC2) contains.

Hex(E9CFC2)	3
<i>Conversions</i>	4
<i>Details</i>	6
<i>Harmonies</i>	11
<i>Previews</i>	23
<i>Color Blindness Simulation</i>	26
<i>CSS Examples</i>	29

Color

Hex(E9CFC2)

Conversions

Conversions Part 1

Format	Color
Hex	E9CFC2
RGB	233, 207, 194
RGB Percent	91%, 81%, 76%
CMY	0.0863, 0.1882, 0.2392
CMYK	0.00, 0.11, 0.17, 0.09
HSL	20°, 47%, 84%
HSV	20°, 17%, 91%
XYZ	65.6547, 65.8443, 60.2878
YIQ	213.2920, 19.6690, 1.4690

Conversions

Conversions Part 2

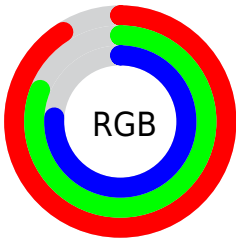
Format	Color
R _Y B	233, 214, 194
Decimal	15323074
CIE Lab	84.92, 7.00, 9.76
CIE LCh	85, 12.016, 54.352
Yxy	65.8443, 0.3423, 0.3433
Android (android.graphics.Color)	4293513154 (0xFFE9CFC2)
YUV	213.2920, -9.5110, 17.2839
Hunter-Lab	81.1445, 2.4229, 12.7506

Details

The Hex color **E9CFC2** is a light color, and the websafe version is hex **FFCCCC**. A complement of this color would be **C2DCE9**, and the grayscale version is **D5D5D5**.

A 20% lighter version of the original color is **FFFFFFA**, and **B1998C** is the 20% darker color. If you saturate the color by 10%, you get **E9BFAB**, and if you desaturate by 10%, it is **E9DFD9**.

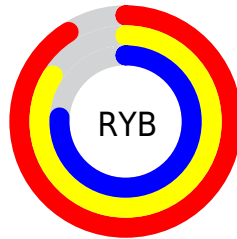
Distribution



Red (91%)

Green (81%)

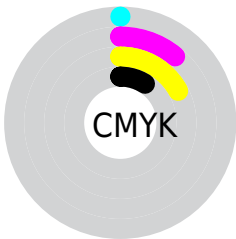
Blue (76%)



Red (91%)

Yellow (84%)

Blue (76%)

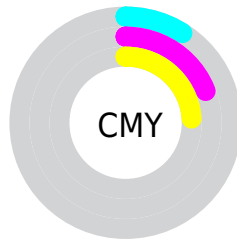


Cyan (0%)

Magenta (11%)

Yellow (17%)

Black (9%)



Cyan (9%)

Magenta (19%)

Yellow (24%)

Brightness & Saturation Gradients

These gradients show how the Hex color E9CFC2 changes by changing the brightness by 10 percent. The first figure shows a shift by +10% for each color and the second figure -10%.

Similar to the brightness gradients but the following saturation gradients show a change of the Hex color E9CFC2 by changing the saturation by 10% instead.

 E9CFC2

 E9CFC2

FFFFFFF

 CDB3A7

 FFFFFFFA

 B1998C

 967F73

 7C665A

 634E43

 4A372D

 332218

 1F0C00

 000000

 E9CFC2

 E9CFC2

 E9BFAB

 E9DFD9

 E9B093

 E9EEF1

 E9A07C

 E9FEFF

 E99165

 E9FFFF

 E9814D

 E97236

 E9621F

 E95308

 E94E00

Harmonies

Analogous

The Analogous color harmony consists of three colors that are next to each other on the color wheel.



EDCDCB



E9CFC2



E0D2BE

Triad

The Triadic color harmony groups three colors that are evenly spaced from another and form a triangle on the color wheel.



E9CFC2



BCDBD1



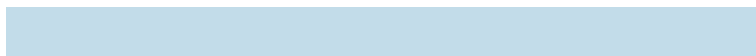
D4D2E9

Complementary

The Complementary color scheme is a pair of colors which are on the opposite of each other on the color wheel.



E9CFC2



C2DCE9

Split Complementary

Split-complementary colors differ from the complementary color scheme. The scheme consists of three colors, the original color and two neighbors of the complement color.



C6D6EA



E9CFC2



B8DBDD

Square

The Square scheme is like the rectangle color scheme, but the four colors are evenly spaced on the color wheel.



E9CFC2



C6D9C7



BBD9E6



E1CEE1

Rectangle

The Rectangle color scheme consists of four colors that form a rectangle on the color wheel.



E9CFC2



D8D5BE



BBD9E6



CFD3EA

Sweetspot

The Sweet Spot groups the original color and five complimentary colors.



E9CFC2



FFF7F2



E9C2DC



807A78



000000



808080

Same Dimension

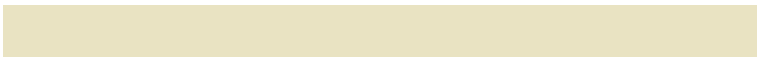
The Same Dimension uses a secret algorithm to generate beautiful new colors.



E9CFC2



FFDDCC



E9E3C2



756D6A



B53C00



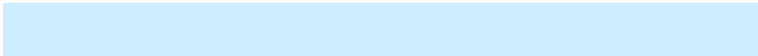
361200

Inverse Universe

The Inverse Universe completely reimagines the original color for something new.



C2DCE9



CCEEFF



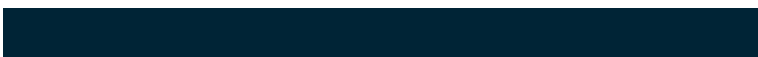
C2C9E9



6A7175



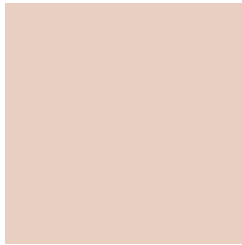
0079B5



002436

Previews

White Background



This preview shows how the Hex color E9CFC2 looks on a white background.

Color Contrast Check

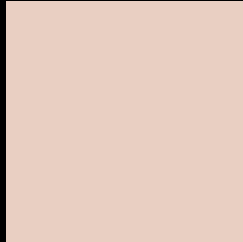
Large Text (above 18pt) WCAG AA × Fail

Any Text WCAG AA × Fail

Large Text (above 18pt) WCAG AAA × Fail

Any Text WCAG AAA × Fail

Black Background



This preview shows how the Hex color E9CFC2 looks on a black background.

Color Contrast Check

Large Text (above 18pt) WCAG AA ✓ Pass

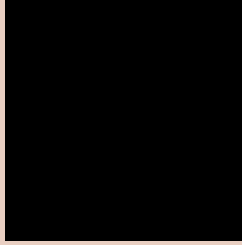
Any Text WCAG AA ✓ Pass

Large Text (above 18pt) WCAG AAA ✓ Pass

Any Text WCAG AAA ✓ Pass

If you want to check with other color combinations, try the [Color Contrast Checker](#).

Hex E9CFC2 Background



This preview shows how black text looks on a background with the Hex color E9CFC2.

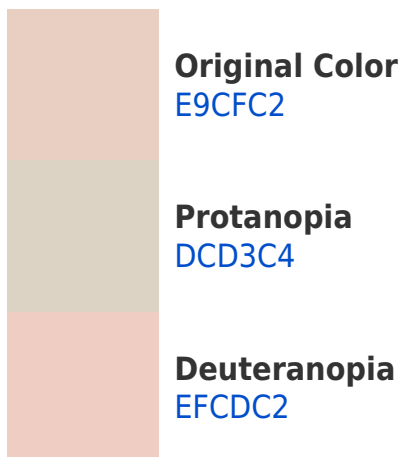


This preview shows how white text looks on a background with the Hex color E9CFC2.

Color Blindness Simulation

Color vision deficiency is a very complex topic, and I could not describe the different causes any better than Wikipedia does, so if you want to learn more, you should check out their [article about color blindness](#).

Dichromacy



Trichromacy



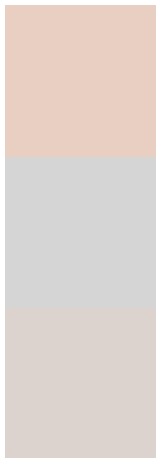
Original Color
E9CFC2

Protanomaly
E1D2C3

Deuteranomaly
EDCEC2

Tritanomaly
EBCCD2

Monochromacy



Original Color
E9CFC2

Achromatopsia
D5D5D5

Achromatomaly
DCD3CE

CSS Examples

Text

The CSS property to change the color of the text to Hex E9CFC2 is called "color". The color property can be set on classes, ids or directly on the HTML element.

This example shows how text in the color #E9CFC2 looks like.

```
.text, #text, p{  
    color:#E9CFC2  
}
```

If you want to add a text shadow in that color use the text-shadow property, you can generate a text shadow directly with our [CSS Text Shadow Generator](#).

Here you see how black text with a 4 pixel #E9CFC2 colored shadow looks like.

```
.shadow{ text-shadow: 4px 4px 2px #E9CFC2
}
```

Border

The CSS property to change the border of an element to Hex E9CFC2 is called "border". The border property can be set on classes, ids or directly on the HTML element.

This example shows the color as border, it can be applied via the CSS property "border" or "border-color".

```
.border, #border, table{ border:4px solid
#E9CFC2 }
```

If only the border color should be changed use the property `border-color`.

```
.border{ border-color:#E9CFC2 }
```

If you want to add a box shadow in that color use:

Here you see how a box with a 4 pixel #E9CFC2 colored shadow looks like.

```
.boxshadow{ -moz-box-shadow:4px 4px 4px  
4px #E9CFC2; -webkit-box-shadow:4px 4px  
4px 4px #E9CFC2; box-shadow:4px 4px 4px  
4px #E9CFC2 }
```

Background

The CSS property to change the background color of an element to Hex E9CFC2 is called "background". The background property can be set on classes, ids or directly on the HTML element.

```
.background, #background, body{  
background:#E9CFC2 }
```

If only the background color should be changed can be used:

```
.background{ background-color:#E9CFC2 }
```

This example shows the color as background, it is applied via the CSS property "background".

To optimize and compress your CSS code, you can use our [online CSS compressor and optimizer](#) based on csstidy. If you want to create a linear or radial gradient as background or border, check our [CSS Gradient Generator](#).

Hey! You found this booklet interesting? Support Converting Colors with the new Membership Option!

The pro membership hides all ads, plus gives you double the colors in the color bucket, and more awesome pro features!

[Learn more, Memberships starting at \\$2.50/m!](#)

**Follow me
on Twitter!**

@ConvertingColor