

Converting Colors

Hex(E9D1C7)

Have a look what the booklet for
Hex(E9D1C7) contains.

Hex(E9D1C7)	3
<i>Conversions</i>	4
<i>Details</i>	6
<i>Harmonies</i>	11
<i>Previews</i>	23
<i>Color Blindness Simulation</i>	26
<i>CSS Examples</i>	29

Color

Hex(E9D1C7)

Conversions

Conversions Part 1

Format	Color
Hex	E9D1C7
RGB	233, 209, 199
RGB Percent	91%, 82%, 78%
CMY	0.0863, 0.1804, 0.2196
CMYK	0.00, 0.10, 0.15, 0.09
HSL	18°, 44%, 85%
HSV	18°, 15%, 91%
XYZ	66.7135, 67.0481, 63.4582
YIQ	215.0360, 17.5140, 1.9780

Conversions

Conversions Part 2

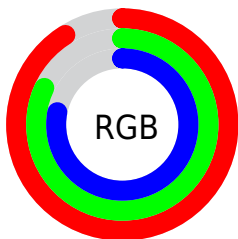
Format	Color
R _Y B	233, 213, 199
Decimal	15323591
CIE Lab	85.53, 6.73, 7.99
CIE LCh	86, 10.447, 49.880
Yxy	67.0481, 0.3383, 0.3400
Android (android.graphics.Color)	4293513671 (0xFFE9D1C7)
YUV	215.0360, -7.9057, 15.7544
Hunter-Lab	81.8829, 2.1366, 11.3690

Details

The Hex color **E9D1C7** is a light color, and the websafe version is hex **CCCCCC**. A complement of this color would be **C7DFE9**, and the grayscale version is **D7D7D7**.

A 20% lighter version of the original color is **FFFFFF**, and **B19B91** is the 20% darker color. If you saturate the color by 10%, you get **E9C1B0**, and if you desaturate by 10%, it is **E9E1DE**.

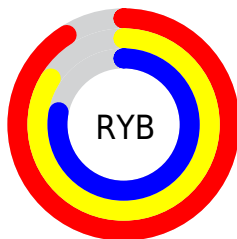
Distribution



Red (91%)

Green (82%)

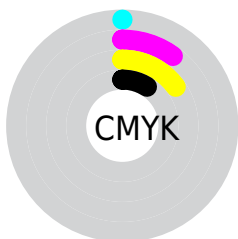
Blue (78%)



Red (91%)

Yellow (84%)

Blue (78%)

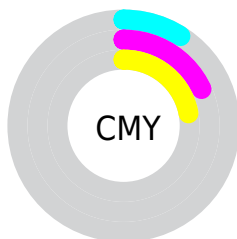


Cyan (0%)

Magenta (10%)

Yellow (15%)

Black (9%)



Cyan (9%)

Magenta (18%)

Yellow (22%)

Brightness & Saturation Gradients

These gradients show how the Hex color E9D1C7 changes by changing the brightness by 10 percent. The first figure shows a shift by +10% for each color and the second figure -10%.

Similar to the brightness gradients but the following saturation gradients show a change of the Hex color E9D1C7 by changing the saturation by 10% instead.

 E9D1C7

FFFFFF

 E9D1C7

 CDB5AC

 B19B91

 968177

 7C685F

 634F47

 4B3931

 34231C

 200E01

 000000

 E9D1C7

 E9D1C7

 E9C1B0

 E9E1DE

 E9B098

 E9F2F6

 E9A081

 E9FFFF

 E98F6A

 E97F53

 E96E3B

 E95E24

 E94D0D

 E94500

Harmonies

Analogous

The Analogous color harmony consists of three colors that are next to each other on the color wheel.



EBCFCF



E9D1C7



E2D4C3

Triad

The Triadic color harmony groups three colors that are evenly spaced from another and form a triangle on the color wheel.



E9D1C7



C2DCD2



D4D4E8

Complementary

The Complementary color scheme is a pair of colors which are on the opposite of each other on the color wheel.



E9D1C7



C7DFE9

Split Complementary

Split-complementary colors differ from the complementary color scheme. The scheme consists of three colors, the original color and two neighbors of the complement color.



C8D8E9



E9D1C7



BDDCDC

Square

The Square scheme is like the rectangle color scheme, but the four colors are evenly spaced on the color wheel.



E9D1C7



CBDAC9



C0DAE4



E0D1E3

Rectangle

The Rectangle color scheme consists of four colors that form a rectangle on the color wheel.



E9D1C7



DBD6C2



C0DAE4



D0D5E9

Sweetspot

The Sweet Spot groups the original color and five complimentary colors.



E9D1C7



FFF8F5



E9C7DF



807B79



000000



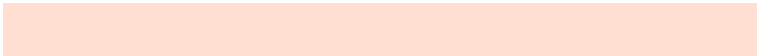
808080

Same Dimension

The Same Dimension uses a secret algorithm to generate beautiful new colors.



E9D1C7



FFDFD1



E9E2C7



756D6A



B53500



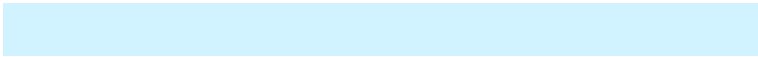
361000

Inverse Universe

The Inverse Universe completely reimagines the original color for something new.



C7DFE9



D1F2FF



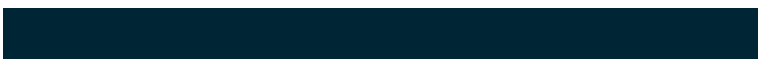
C7CEE9



6A7275



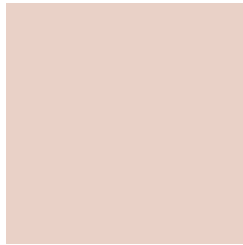
0080B5



002636

Previews

White Background



This preview shows how the Hex color E9D1C7 looks on a white background.

Color Contrast Check

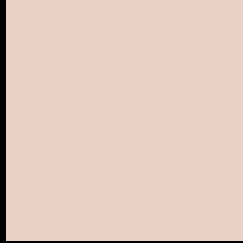
Large Text (above 18pt) WCAG AA × Fail

Any Text WCAG AA × Fail

Large Text (above 18pt) WCAG AAA × Fail

Any Text WCAG AAA × Fail

Black Background



This preview shows how the Hex color E9D1C7 looks on a black background.

Color Contrast Check

Large Text (above 18pt) WCAG AA ✓ Pass

Any Text WCAG AA ✓ Pass

Large Text (above 18pt) WCAG AAA ✓ Pass

Any Text WCAG AAA ✓ Pass

If you want to check with other color combinations, try the [Color Contrast Checker](#).

Hex E9D1C7 Background



This preview shows how black text looks on a background with the Hex color E9D1C7.

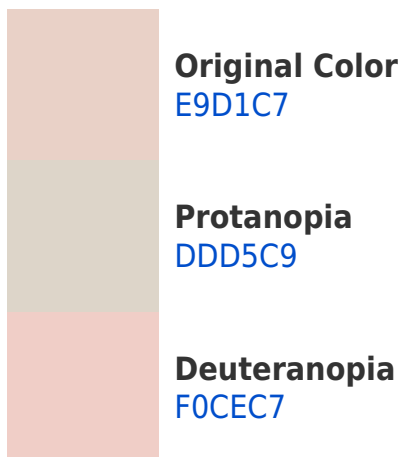


This preview shows how white text looks on a background with the Hex color E9D1C7.

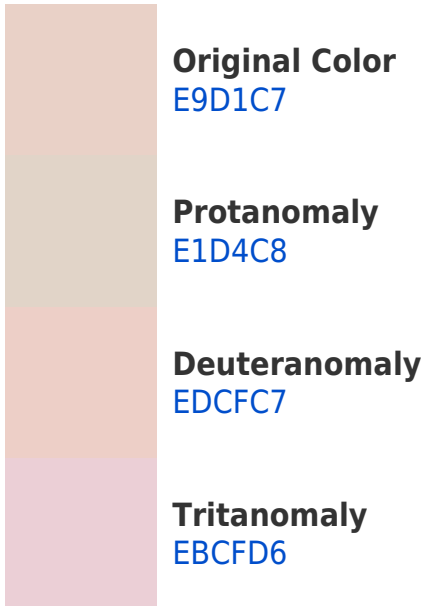
Color Blindness Simulation

Color vision deficiency is a very complex topic, and I could not describe the different causes any better than Wikipedia does, so if you want to learn more, you should check out their [article about color blindness](#).

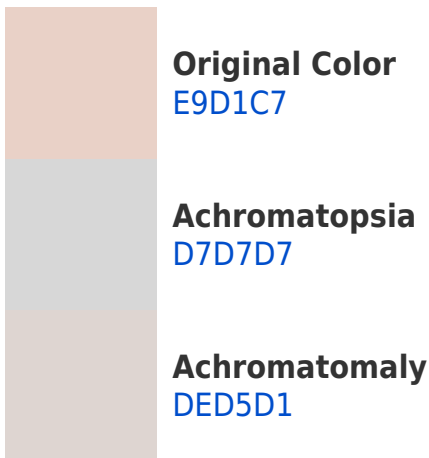
Dichromacy



Trichromacy



Monochromacy



CSS Examples

Text

The CSS property to change the color of the text to Hex E9D1C7 is called "color". The color property can be set on classes, ids or directly on the HTML element.

This example shows how text in the color #E9D1C7 looks like.

```
.text, #text, p{  
    color:#E9D1C7  
}
```

If you want to add a text shadow in that color use the text-shadow property, you can generate a text shadow directly with our [CSS Text Shadow Generator](#).

Here you see how black text with a 4 pixel #E9D1C7 colored shadow looks like.

```
.shadow{ text-shadow: 4px 4px 2px #E9D1C7
}
```

Border

The CSS property to change the border of an element to Hex E9D1C7 is called "border". The border property can be set on classes, ids or directly on the HTML element.

This example shows the color as border, it can be applied via the CSS property "border" or "border-color".

```
.border, #border, table{ border:4px solid
#E9D1C7 }
```

If only the border color should be changed use the property `border-color`.

```
.border{ border-color:#E9D1C7 }
```

If you want to add a box shadow in that color use:

Here you see how a box with a 4 pixel #E9D1C7 colored shadow looks like.

```
.boxshadow{ -moz-box-shadow:4px 4px 4px  
4px #E9D1C7; -webkit-box-shadow:4px 4px  
4px 4px #E9D1C7; box-shadow:4px 4px 4px  
4px #E9D1C7 }
```

Background

The CSS property to change the background color of an element to Hex E9D1C7 is called "background". The background property can be set on classes, ids or directly on the HTML element.

```
.background, #background, body{  
background:#E9D1C7 }
```

If only the background color should be changed can be used:

```
.background{ background-color:#E9D1C7 }
```

This example shows the color as background, it is applied via the CSS property "background".

To optimize and compress your CSS code, you can use our [online CSS compressor and optimizer](#) based on csstidy. If you want to create a linear or radial gradient as background or border, check our [CSS Gradient Generator](#).

Hey! You found this booklet interesting? Support Converting Colors with the new Membership Option!

The pro membership hides all ads, plus gives you double the colors in the color bucket, and more awesome pro features!

[Learn more, Memberships starting at \\$2.50/m!](#)

**Follow me
on Twitter!**

@ConvertingColor