

# Converting Colors

Hex(E9D3C2)

Have a look what the booklet for  
Hex(E9D3C2) contains.

<b>Hex(E9D3C2)</b> .....	3
<i><b>Conversions</b></i> .....	4
<i><b>Details</b></i> .....	6
<i><b>Harmonies</b></i> .....	11
<i><b>Previews</b></i> .....	23
<i><b>Color Blindness Simulation</b></i> .....	26
<i><b>CSS Examples</b></i> .....	29

# **Color**

**Hex(E9D3C2)**

# Conversions

## Conversions Part 1

Format	Color
Hex	E9D3C2
RGB	233, 211, 194
RGB Percent	91%, 83%, 76%
CMY	0.0863, 0.1725, 0.2392
CMYK	0.00, 0.09, 0.17, 0.09
HSL	26°, 47%, 84%
HSV	26°, 17%, 91%
XYZ	66.6361, 67.8072, 60.6149
YIQ	215.6400, 18.5690, -0.6230

# Conversions

## Conversions Part 2

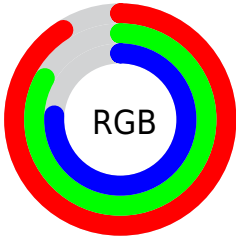
Format	Color
R <sub>Y</sub> B	233, 224, 194
Decimal	15324098
CIE Lab	85.91, 4.91, 11.18
CIE LCh	86, 12.213, 66.271
Yxy	67.8072, 0.3416, 0.3476
Android (android.graphics.Color)	4293514178 (0xFFE9D3C2)
YUV	215.6400, -10.6685, 15.2247
Hunter-Lab	82.3451, 0.3435, 13.9977

# Details

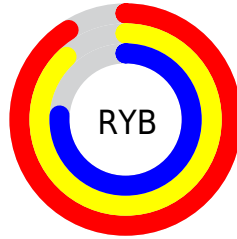
The Hex color **E9D3C2** is a light color, and the websafe version is hex **CCCCCC**. A complement of this color would be **C2D8E9**, and the grayscale version is **D8D8D8**.

A 20% lighter version of the original color is **FFFFFFA**, and **B19D8C** is the 20% darker color. If you saturate the color by 10%, you get **E9C6AB**, and if you desaturate by 10%, it is **E9E0D9**.

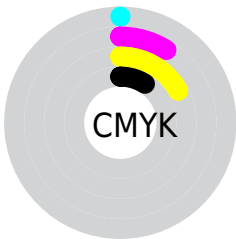
# Distribution



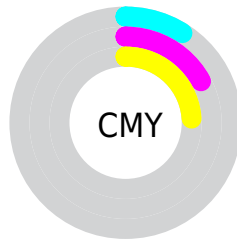
- Red (91%)
- Green (83%)
- Blue (76%)



- Red (91%)
- Yellow (88%)
- Blue (76%)



- Cyan (0%)
- Magenta (9%)
- Yellow (17%)
- Black (9%)



- Cyan (9%)
- Magenta (17%)
- Yellow (24%)

# Brightness & Saturation Gradients

These gradients show how the Hex color E9D3C2 changes by changing the brightness by 10 percent. The first figure shows a shift by +10% for each color and the second figure -10%.

Similar to the brightness gradients but the following saturation gradients show a change of the Hex color E9D3C2 by changing the saturation by 10% instead.



 E9D3C2

 E9D3C2

FFFFFFF

 CDB7A7

 FFFFFFFA

 B19D8C

 968273

 7C695A

 635143

 4B3A2D

 332518

 1F1000

 000000

 E9D3C2

 E9D3C2

 E9C6AB

 E9E0D9

 E9B993

 E9EDF1

 E9AC7C

 E9FAFF

 E99E65

 E9FFFF

 E9914D

 E98436

 E9771F

 E96A08

 E96600

# Harmonies

## Analogous

The Analogous color harmony consists of three colors that are next to each other on the color wheel.



EFD0CA



E9D3C2



DED7C0

# Triad

The Triadic color harmony groups three colors that are evenly spaced from another and form a triangle on the color wheel.



E9D3C2



BCDED9



DCD3E9

# Complementary

The Complementary color scheme is a pair of colors which are on the opposite of each other on the color wheel.



E9D3C2



C2D8E9

# Split Complementary

Split-complementary colors differ from the complementary color scheme. The scheme consists of three colors, the original color and two neighbors of the complement color.



CED7EE



E9D3C2



BADDE4

# Square

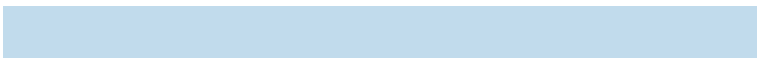
The Square scheme is like the rectangle color scheme, but the four colors are evenly spaced on the color wheel.



E9D3C2



C4DDCD



C1DBEC



E8D0E0

# Rectangle

The Rectangle color scheme consists of four colors that form a rectangle on the color wheel.



E9D3C2



D5D9C2



C1DBEC



D7D4EB

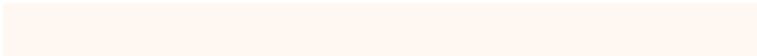


# Sweetspot

The Sweet Spot groups the original color and five complimentary colors.



E9D3C2



FFF8F2



E9C2D8



807B78



000000



808080

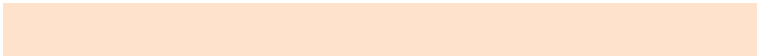


# Same Dimension

The Same Dimension uses a secret algorithm to generate beautiful new colors.



E9D3C2



FFE2CC



E9E6C2



756F6A



B54F00



361700

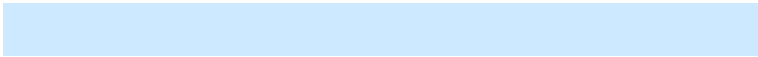


# Inverse Universe

The Inverse Universe completely reimagines the original color for something new.



C2D8E9



CCE9FF



C2C5E9



6A7075



0066B5

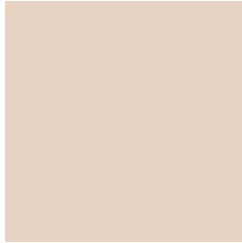


001E36



# Previews

## White Background



This preview shows how the Hex color E9D3C2 looks on a white background.

## Color Contrast Check

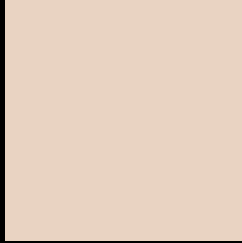
Large Text (above 18pt) WCAG AA × Fail

Any Text WCAG AA × Fail

Large Text (above 18pt) WCAG AAA × Fail

Any Text WCAG AAA × Fail

# Black Background



This preview shows how the Hex color E9D3C2 looks on a black background.

## Color Contrast Check

Large Text (above 18pt) WCAG AA ✓ Pass

Any Text WCAG AA ✓ Pass

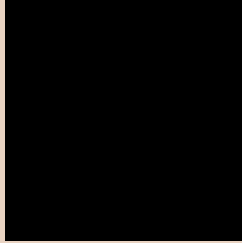
Large Text (above 18pt) WCAG AAA ✓ Pass

Any Text WCAG AAA ✓ Pass

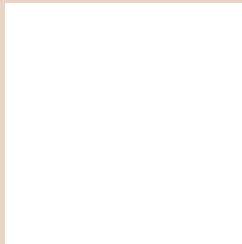
If you want to check with other color combinations, try the [Color Contrast Checker](#).



## Hex E9D3C2 Background



This preview shows how black text looks on a background with the Hex color E9D3C2.

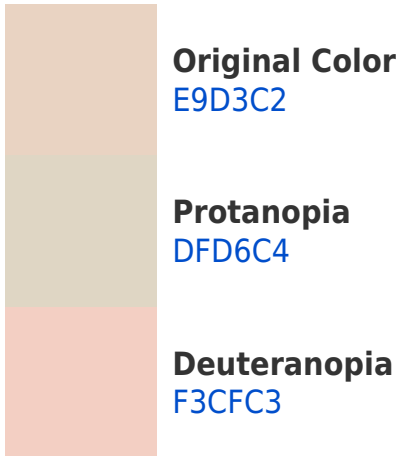


This preview shows how white text looks on a background with the Hex color E9D3C2.

# Color Blindness Simulation

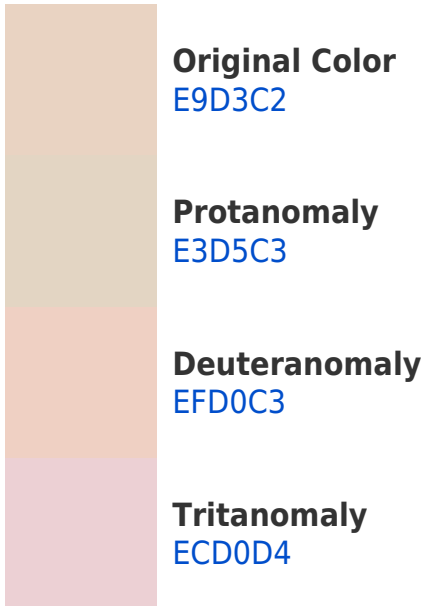
Color vision deficiency is a very complex topic, and I could not describe the different causes any better than Wikipedia does, so if you want to learn more, you should check out their [article about color blindness](#).

## Dichromacy





# Trichromacy



# Monochromacy



# CSS Examples

## Text

The CSS property to change the color of the text to Hex E9D3C2 is called "color". The color property can be set on classes, ids or directly on the HTML element.

This example shows how text in the color #E9D3C2 looks like.

```
.text, #text, p{  
    color:#E9D3C2  
}
```

If you want to add a text shadow in that color use the text-shadow property, you can generate a text shadow directly with our [CSS Text Shadow Generator](#).

Here you see how black text with a 4 pixel #E9D3C2 colored shadow looks like.

```
.shadow{ text-shadow: 4px 4px 2px #E9D3C2
}
```

## Border

The CSS property to change the border of an element to Hex E9D3C2 is called "border". The border property can be set on classes, ids or directly on the HTML element.

This example shows the color as border, it can be applied via the CSS property "border" or "border-color".

```
.border, #border, table{ border:4px solid
#E9D3C2 }
```

If only the border color should be changed use the property `border-color`.

```
.border{ border-color:#E9D3C2 }
```

If you want to add a box shadow in that color use:

Here you see how a box with a 4 pixel #E9D3C2 colored shadow looks like.

```
.boxshadow{ -moz-box-shadow:4px 4px 4px  
4px #E9D3C2; -webkit-box-shadow:4px 4px  
4px 4px #E9D3C2; box-shadow:4px 4px 4px  
4px #E9D3C2 }
```

# Background

The CSS property to change the background color of an element to Hex E9D3C2 is called "background". The background property can be set on classes, ids or directly on the HTML element.

```
.background, #background, body{  
background:#E9D3C2 }
```

If only the background color should be changed can be used:

```
.background{ background-color:#E9D3C2 }
```

This example shows the color as background, it is applied via the CSS property "background".

To optimize and compress your CSS code, you can use our [online CSS compressor and optimizer](#) based on csstidy. If you want to create a linear or radial gradient as background or border, check our [CSS Gradient Generator](#).



Hey! You found this booklet interesting? Support Converting Colors with the new Membership Option!

The pro membership hides all ads, plus gives you double the colors in the color bucket, and more awesome pro features!

**[Learn more, Memberships starting at \\$2.50/m!](#)**

**Follow me  
on Twitter!**

@ConvertingColor