

# Converting Colors

Hex(E9D3C9)

Have a look what the booklet for  
Hex(E9D3C9) contains.

<b>Hex(E9D3C9)</b> .....	3
<i><b>Conversions</b></i> .....	4
<i><b>Details</b></i> .....	6
<i><b>Harmonies</b></i> .....	11
<i><b>Previews</b></i> .....	23
<i><b>Color Blindness Simulation</b></i> .....	26
<i><b>CSS Examples</b></i> .....	29

# **Color**

**Hex(E9D3C9)**

# Conversions

## Conversions Part 1

Format	Color
Hex	E9D3C9
RGB	233, 211, 201
RGB Percent	91%, 83%, 79%
CMY	0.0863, 0.1725, 0.2118
CMYK	0.00, 0.09, 0.14, 0.09
HSL	19°, 42%, 85%
HSV	19°, 14%, 91%
XYZ	67.4412, 68.1292, 64.8541
YIQ	216.4380, 16.3220, 1.5540

# Conversions

## Conversions Part 2

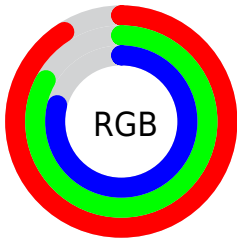
Format	Color
RYP	233, 216, 201
Decimal	15324105
CIELab	86.07, 6.00, 7.71
CIElCh	86, 9.769, 52.096
Yxy	68.1292, 0.3365, 0.3399
Android (android.graphics.Color)	4293514185 (0xFFE9D3C9)
YUV	216.4380, -7.6109, 14.5249
Hunter-Lab	82.5404, 1.4009, 11.1927

# Details

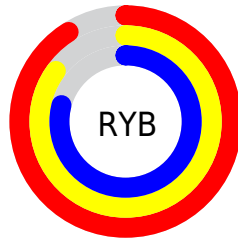
The Hex color **E9D3C9** is a light color, and the websafe version is hex **CCCCCC**. A complement of this color would be **C9DFE9**, and the grayscale version is **D9D9D9**.

A 20% lighter version of the original color is **FFFFFF**, and **B19D93** is the 20% darker color. If you saturate the color by 10%, you get **E9C3B2**, and if you desaturate by 10%, it is **E9E3E0**.

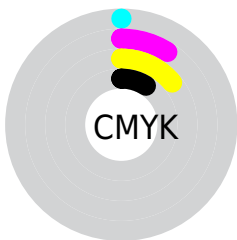
# Distribution



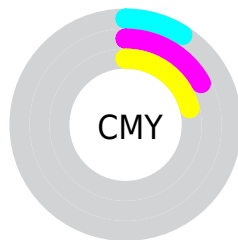
- Red (91%)
- Green (83%)
- Blue (79%)



- Red (91%)
- Yellow (85%)
- Blue (79%)



- Cyan (0%)
- Magenta (9%)
- Yellow (14%)
- Black (9%)



- Cyan (9%)
- Magenta (17%)
- Yellow (21%)

# Brightness & Saturation Gradients

These gradients show how the Hex color E9D3C9 changes by changing the brightness by 10 percent. The first figure shows a shift by +10% for each color and the second figure -10%.

Similar to the brightness gradients but the following saturation gradients show a change of the Hex color E9D3C9 by changing the saturation by 10% instead.



 E9D3C9

FFFFFF

 E9D3C9

 CDB7AE

 B19D93

 968279

 7C6961

 635149

 4B3A32

 34251D

 201004

 000000

 E9D3C9

 E9D3C9

 E9C3B2

 E9E3E0

 E9B39A

 E9F3F8

 E9A383

 E9FFFF

 E9936C

 E98355

 E9733D

 E96326

 E9530F

 E94900

# Harmonies

## Analogous

The Analogous color harmony consists of three colors that are next to each other on the color wheel.



ECD1D1



E9D3C9



E2D6C5

# Triad

The Triadic color harmony groups three colors that are evenly spaced from another and form a triangle on the color wheel.



E9D3C9



C4DDD4



D6D6E8

# Complementary

The Complementary color scheme is a pair of colors which are on the opposite of each other on the color wheel.



E9D3C9



C9DFE9

# Split Complementary

Split-complementary colors differ from the complementary color scheme. The scheme consists of three colors, the original color and two neighbors of the complement color.



CBD9E9



E9D3C9



C1DDDE

# Square

The Square scheme is like the rectangle color scheme, but the four colors are evenly spaced on the color wheel.



E9D3C9



CDDBBC



C3DBE5



E1D3E3

# Rectangle

The Rectangle color scheme consists of four colors that form a rectangle on the color wheel.



E9D3C9



DBD8C5



C3DBE5



D2D7E9

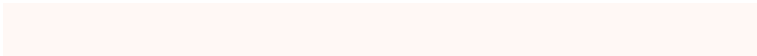


# Sweetspot

The Sweet Spot groups the original color and five complimentary colors.



E9D3C9



FFF8F5



E9C9DF



807B79



000000



808080

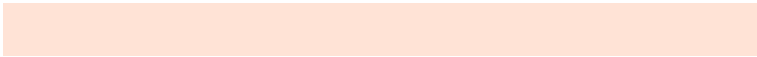


# Same Dimension

The Same Dimension uses a secret algorithm to generate beautiful new colors.



E9D3C9



FFE3D6



E9E3C9



756D6A



B53900



361100

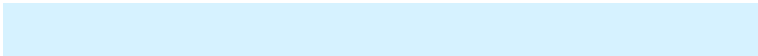


# Inverse Universe

The Inverse Universe completely reimagines the original color for something new.



C9DFE9



D6F2FF



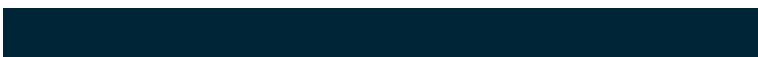
C9CFE9



6A7275



007CB5

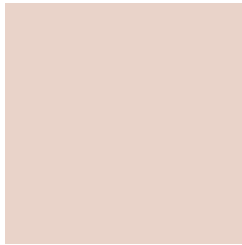


002536



# Previews

## White Background



This preview shows how the Hex color E9D3C9 looks on a white background.

## Color Contrast Check

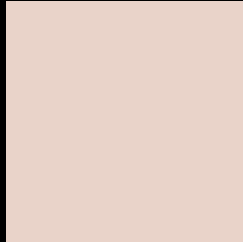
Large Text (above 18pt) WCAG AA × Fail

Any Text WCAG AA × Fail

Large Text (above 18pt) WCAG AAA × Fail

Any Text WCAG AAA × Fail

# Black Background



This preview shows how the Hex color E9D3C9 looks on a black background.

## Color Contrast Check

Large Text (above 18pt) WCAG AA ✓ Pass

Any Text WCAG AA ✓ Pass

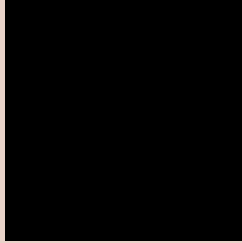
Large Text (above 18pt) WCAG AAA ✓ Pass

Any Text WCAG AAA ✓ Pass

If you want to check with other color combinations, try the [Color Contrast Checker](#).



## Hex E9D3C9 Background



This preview shows how black text looks on a background with the Hex color E9D3C9.

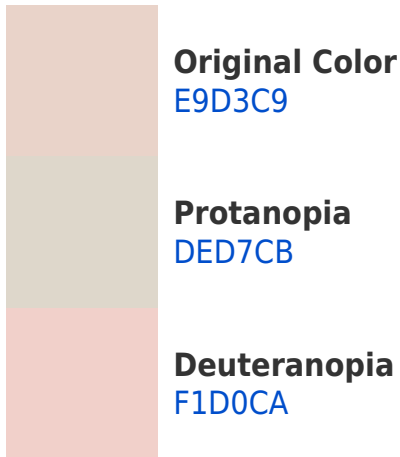


This preview shows how white text looks on a background with the Hex color E9D3C9.

# Color Blindness Simulation

Color vision deficiency is a very complex topic, and I could not describe the different causes any better than Wikipedia does, so if you want to learn more, you should check out their [article about color blindness](#).

## Dichromacy





**Tritanopia**  
ECD0E0

# Trichromacy



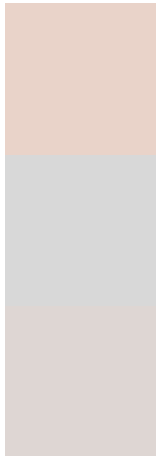
**Original Color**  
E9D3C9

**Protanomaly**  
E2D6CA

**Deuteranomaly**  
EED1CA

**Tritanomaly**  
EBD1D8

# Monochromacy



**Original Color**  
E9D3C9

**Achromatopsia**  
D8D8D8

**Achromatomaly**  
DED6D3

# CSS Examples

## Text

The CSS property to change the color of the text to Hex E9D3C9 is called "color". The color property can be set on classes, ids or directly on the HTML element.

This example shows how text in the color #E9D3C9 looks like.

```
.text, #text, p{  
    color:#E9D3C9  
}
```

If you want to add a text shadow in that color use the text-shadow property, you can generate a text shadow directly with our [CSS Text Shadow Generator](#).

Here you see how black text with a 4 pixel #E9D3C9 colored shadow looks like.

```
.shadow{ text-shadow: 4px 4px 2px #E9D3C9
}
```

## Border

The CSS property to change the border of an element to Hex E9D3C9 is called "border". The border property can be set on classes, ids or directly on the HTML element.

This example shows the color as border, it can be applied via the CSS property "border" or "border-color".

```
.border, #border, table{ border:4px solid
#E9D3C9 }
```

If only the border color should be changed use the property `border-color`.

```
.border{ border-color:#E9D3C9 }
```

If you want to add a box shadow in that color use:

Here you see how a box with a 4 pixel #E9D3C9 colored shadow looks like.

```
.boxshadow{ -moz-box-shadow:4px 4px 4px  
4px #E9D3C9; -webkit-box-shadow:4px 4px  
4px 4px #E9D3C9; box-shadow:4px 4px 4px  
4px #E9D3C9 }
```

# Background

The CSS property to change the background color of an element to Hex E9D3C9 is called "background". The background property can be set on classes, ids or directly on the HTML element.

```
.background, #background, body{  
background:#E9D3C9 }
```

If only the background color should be changed can be used:

```
.background{ background-color:#E9D3C9 }
```

This example shows the color as background, it is applied via the CSS property "background".

To optimize and compress your CSS code, you can use our [online CSS compressor and optimizer](#) based on csstidy. If you want to create a linear or radial gradient as background or border, check our [CSS Gradient Generator](#).



Hey! You found this booklet interesting? Support Converting Colors with the new Membership Option!

The pro membership hides all ads, plus gives you double the colors in the color bucket, and more awesome pro features!

**[Learn more, Memberships starting at \\$2.50/m!](#)**

**Follow me  
on Twitter!**

@ConvertingColor