

Converting Colors

Hex(E9D4CA)

Have a look what the booklet for
Hex(E9D4CA) contains.

Hex(E9D4CA)	3
<i>Conversions</i>	4
<i>Details</i>	6
<i>Harmonies</i>	11
<i>Previews</i>	23
<i>Color Blindness Simulation</i>	26
<i>CSS Examples</i>	29

Color

Hex(E9D4CA)

Conversions

Conversions Part 1

Format	Color
Hex	E9D4CA
RGB	233, 212, 202
RGB Percent	91%, 83%, 79%
CMY	0.0863, 0.1686, 0.2078
CMYK	0.00, 0.09, 0.13, 0.09
HSL	19°, 41%, 85%
HSV	19°, 13%, 91%
XYZ	67.8084, 68.6749, 65.5588
YIQ	217.1390, 15.7260, 1.3420

Conversions

Conversions Part 2

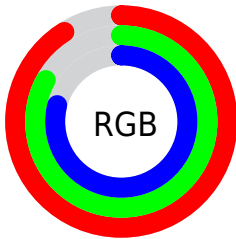
Format	Color
R _Y B	233, 217, 202
Decimal	15324362
CIE Lab	86.34, 5.64, 7.57
CIE LCh	86, 9.439, 53.319
Yxy	68.6749, 0.3356, 0.3399
Android (android.graphics.Color)	4293514442 (0xFFE9D4CA)
YUV	217.1390, -7.4635, 13.9101
Hunter-Lab	82.8703, 1.0342, 11.1048

Details

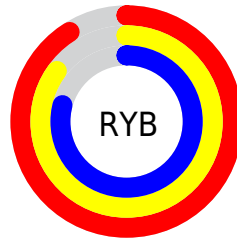
The Hex color **E9D4CA** is a light color, and the websafe version is hex **CCCCCC**. A complement of this color would be **CADFE9**, and the grayscale version is **D9D9D9**.

A 20% lighter version of the original color is **FFFFFF**, and **B19D94** is the 20% darker color. If you saturate the color by 10%, you get **E9C4B3**, and if you desaturate by 10%, it is **E9E4E1**.

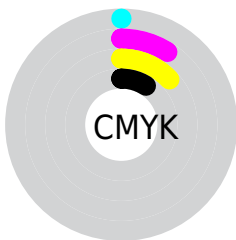
Distribution



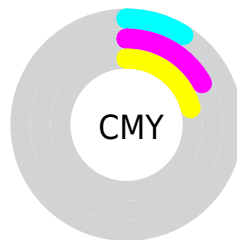
- Red (91%)
- Green (83%)
- Blue (79%)



- Red (91%)
- Yellow (85%)
- Blue (79%)



- Cyan (0%)
- Magenta (9%)
- Yellow (13%)
- Black (9%)



- Cyan (9%)
- Magenta (17%)
- Yellow (21%)

Brightness & Saturation Gradients

These gradients show how the Hex color E9D4CA changes by changing the brightness by 10 percent. The first figure shows a shift by +10% for each color and the second figure -10%.

Similar to the brightness gradients but the following saturation gradients show a change of the Hex color E9D4CA by changing the saturation by 10% instead.

 E9D4CA

FFFFFF

 E9D4CA

 CDB8AF

 B19D94

 96837A

 7C6A61

 63524A

 4B3B33

 34251E

 201105

 000000

 E9D4CA

 E9D4CA

 E9C4B3

 E9E4E1

 E9B49B

 E9F4F9

 E9A584

 E9FFFF

 E9956D

 E98556

 E9753E

 E96627

 E95610

 E94B00

Harmonies

Analogous

The Analogous color harmony consists of three colors that are next to each other on the color wheel.



ECD2D1



E9D4CA



E2D7C6

Triad

The Triadic color harmony groups three colors that are evenly spaced from another and form a triangle on the color wheel.



E9D4CA



C6DDD6



D8D6E8

Complementary

The Complementary color scheme is a pair of colors which are on the opposite of each other on the color wheel.



E9D4CA



CADFE9

Split Complementary

Split-complementary colors differ from the complementary color scheme. The scheme consists of three colors, the original color and two neighbors of the complement color.



CDD9EA



E9D4CA



C2DDDF

Square

The Square scheme is like the rectangle color scheme, but the four colors are evenly spaced on the color wheel.



E9D4CA



CEDCCD



C5DCE6



E2D4E3

Rectangle

The Rectangle color scheme consists of four colors that form a rectangle on the color wheel.



E9D4CA



DBD9C7



C5DCE6



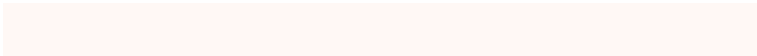
D4D7E9

Sweetspot

The Sweet Spot groups the original color and five complimentary colors.



E9D4CA



FFF8F5



E9CADF



807B79



000000



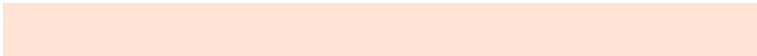
808080

Same Dimension

The Same Dimension uses a secret algorithm to generate beautiful new colors.



E9D4CA



FFE3D6



E9E3CA



756D6A



B53A00



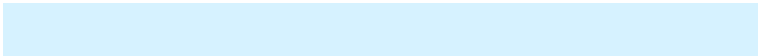
361100

Inverse Universe

The Inverse Universe completely reimagines the original color for something new.



CADFE9



D6F2FF



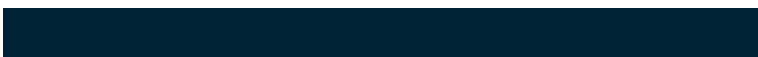
CAD0E9



6A7275



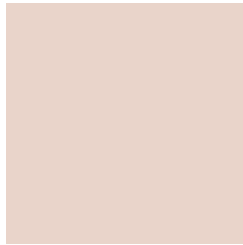
007BB5



002436

Previews

White Background



This preview shows how the Hex color E9D4CA looks on a white background.

Color Contrast Check

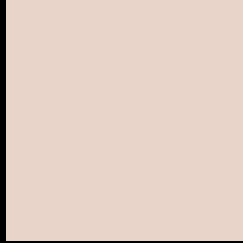
Large Text (above 18pt) WCAG AA × Fail

Any Text WCAG AA × Fail

Large Text (above 18pt) WCAG AAA × Fail

Any Text WCAG AAA × Fail

Black Background



This preview shows how the Hex color E9D4CA looks on a black background.

Color Contrast Check

Large Text (above 18pt) WCAG AA ✓ Pass

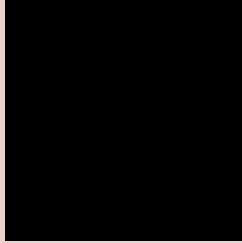
Any Text WCAG AA ✓ Pass

Large Text (above 18pt) WCAG AAA ✓ Pass

Any Text WCAG AAA ✓ Pass

If you want to check with other color combinations, try the [Color Contrast Checker](#).

Hex E9D4CA Background



This preview shows how black text looks on a background with the Hex color E9D4CA.

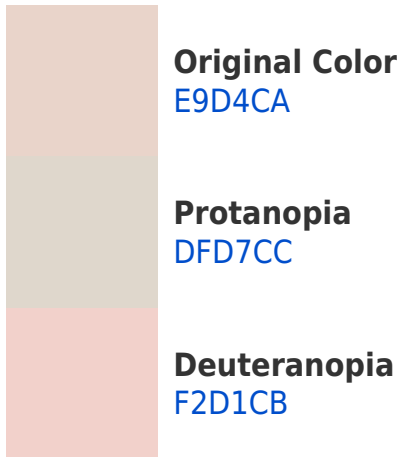


This preview shows how white text looks on a background with the Hex color E9D4CA.

Color Blindness Simulation

Color vision deficiency is a very complex topic, and I could not describe the different causes any better than Wikipedia does, so if you want to learn more, you should check out their [article about color blindness](#).

Dichromacy





Tritanopia
ECD1E1

Trichromacy



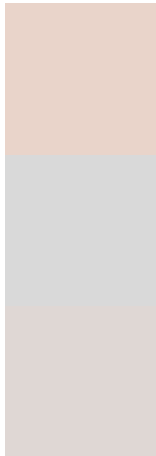
Original Color
E9D4CA

Protanomaly
E3D6CB

Deuteranomaly
EFD2CB

Tritanomaly
EBD2D9

Monochromacy



Original Color
E9D4CA

Achromatopsia
D9D9D9

Achromatomaly
DFD7D4

CSS Examples

Text

The CSS property to change the color of the text to Hex E9D4CA is called "color". The color property can be set on classes, ids or directly on the HTML element.

This example shows how text in the color #E9D4CA looks like.

```
.text, #text, p{  
    color:#E9D4CA  
}
```

If you want to add a text shadow in that color use the text-shadow property, you can generate a text shadow directly with our [CSS Text Shadow Generator](#).

Here you see how black text with a 4 pixel #E9D4CA colored shadow looks like.

```
.shadow{ text-shadow: 4px 4px 2px #E9D4CA
}
```

Border

The CSS property to change the border of an element to Hex E9D4CA is called "border". The border property can be set on classes, ids or directly on the HTML element.

This example shows the color as border, it can be applied via the CSS property "border" or "border-color".

```
.border, #border, table{ border:4px solid
#E9D4CA }
```

If only the border color should be changed use the property `border-color`.

```
.border{ border-color:#E9D4CA }
```

If you want to add a box shadow in that color use:

Here you see how a box with a 4 pixel #E9D4CA colored shadow looks like.

```
.boxshadow{ -moz-box-shadow:4px 4px 4px  
4px #E9D4CA; -webkit-box-shadow:4px 4px  
4px 4px #E9D4CA; box-shadow:4px 4px 4px  
4px #E9D4CA }
```

Background

The CSS property to change the background color of an element to Hex E9D4CA is called "background". The background property can be set on classes, ids or directly on the HTML element.

```
.background, #background, body{  
background:#E9D4CA }
```

If only the background color should be changed can be used:

```
.background{ background-color:#E9D4CA }
```

This example shows the color as background, it is applied via the CSS property "background".

To optimize and compress your CSS code, you can use our [online CSS compressor and optimizer](#) based on csstidy. If you want to create a linear or radial gradient as background or border, check our [CSS Gradient Generator](#).

Hey! You found this booklet interesting? Support Converting Colors with the new Membership Option!

The pro membership hides all ads, plus gives you double the colors in the color bucket, and more awesome pro features!

[Learn more, Memberships starting at \\$2.50/m!](#)

**Follow me
on Twitter!**

@ConvertingColor