

# Converting Colors

Hex(E9D4CC)

Have a look what the booklet for  
Hex(E9D4CC) contains.

<b>Hex(E9D4CC)</b> .....	3
<i><b>Conversions</b></i> .....	4
<i><b>Details</b></i> .....	6
<i><b>Harmonies</b></i> .....	11
<i><b>Previews</b></i> .....	23
<i><b>Color Blindness Simulation</b></i> .....	26
<i><b>CSS Examples</b></i> .....	29

# **Color**

**Hex(E9D4CC)**

# Conversions

## Conversions Part 1

Format	Color
Hex	E9D4CC
RGB	233, 212, 204
RGB Percent	91%, 83%, 80%
CMY	0.0863, 0.1686, 0.2000
CMYK	0.00, 0.09, 0.12, 0.09
HSL	17°, 40%, 86%
HSV	17°, 12%, 91%
XYZ	68.0468, 68.7702, 66.8143
YIQ	217.3670, 15.0840, 1.9640

# Conversions

## Conversions Part 2

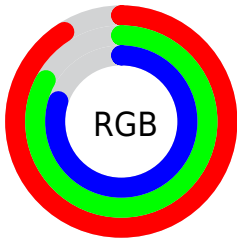
Format	Color
R <sub>Y</sub> B	233, 215, 204
Decimal	15324364
CIE Lab	86.39, 5.96, 6.58
CIE LCh	86, 8.876, 47.844
Yxy	68.7702, 0.3342, 0.3377
Android (android.graphics.Color)	4293514444 (0xFFE9D4CC)
YUV	217.3670, -6.5899, 13.7101
Hunter-Lab	82.9278, 1.3454, 10.2800

# Details

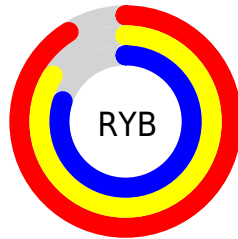
The Hex color **E9D4CC** is a light color, and the websafe version is hex **CCCCCC**. A complement of this color would be **CCE1E9**, and the grayscale version is **D9D9D9**.

A 20% lighter version of the original color is **FFFFFF**, and **B19D96** is the 20% darker color. If you saturate the color by 10%, you get **E9C3B5**, and if you desaturate by 10%, it is **E9E5E3**.

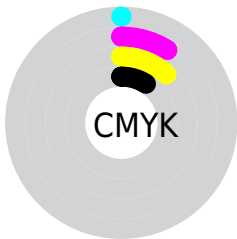
# Distribution



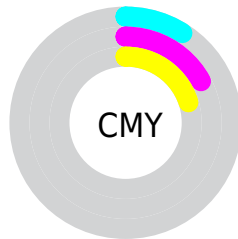
- Red (91%)
- Green (83%)
- Blue (80%)



- Red (91%)
- Yellow (84%)
- Blue (80%)



- Cyan (0%)
- Magenta (9%)
- Yellow (12%)
- Black (9%)



- Cyan (9%)
- Magenta (17%)
- Yellow (20%)

# Brightness & Saturation Gradients

These gradients show how the Hex color E9D4CC changes by changing the brightness by 10 percent. The first figure shows a shift by +10% for each color and the second figure -10%.

Similar to the brightness gradients but the following saturation gradients show a change of the Hex color E9D4CC by changing the saturation by 10% instead.



 E9D4CC

FFFFFF

 E9D4CC

 CDB8B1

 B19D96

 96837C

 7C6A63

 63524B

 4B3B35

 34251F

 201108

 000000

 E9D4CC

 E9D4CC

 E9C3B5

 E9E5E3

 E9B29D

 E9F6FB

 E9A186

 E9FFFF

 E9916F

 E98058

 E96F40

 E95E29

 E94D12

 E94000

# Harmonies

## Analogous

The Analogous color harmony consists of three colors that are next to each other on the color wheel.



EBD3D3



E9D4CC



E3D6C8

# Triad

The Triadic color harmony groups three colors that are evenly spaced from another and form a triangle on the color wheel.



E9D4CC



C8DDD4



D6D7E8

# Complementary

The Complementary color scheme is a pair of colors which are on the opposite of each other on the color wheel.



E9D4CC



CCE1E9

# Split Complementary

Split-complementary colors differ from the complementary color scheme. The scheme consists of three colors, the original color and two neighbors of the complement color.



CCDAE8



E9D4CC



C4DDDD

# Square

The Square scheme is like the rectangle color scheme, but the four colors are evenly spaced on the color wheel.



E9D4CC



D0DCCD



C5DCE4



E0D5E4

# Rectangle

The Rectangle color scheme consists of four colors that form a rectangle on the color wheel.



E9D4CC



DDD8C8



C5DCE4



D2D8E9

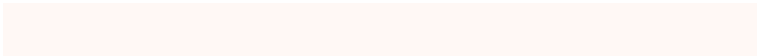


# Sweetspot

The Sweet Spot groups the original color and five complimentary colors.



E9D4CC



FFF8F5



E9CCE1



807B79



000000



808080

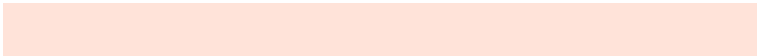


# Same Dimension

The Same Dimension uses a secret algorithm to generate beautiful new colors.



E9D4CC



FFE3D9



E9E2CC



756D6A



B53200



360F00

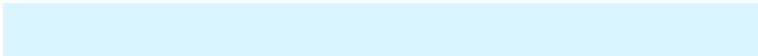


# Inverse Universe

The Inverse Universe completely reimagines the original color for something new.



CCE1E9



D9F4FF



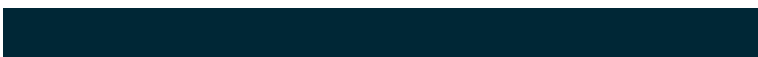
CCD3E9



6A7275



0083B5

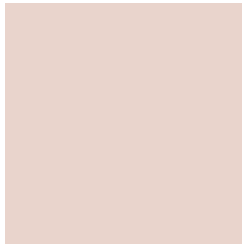


002736



# Previews

## White Background



This preview shows how the Hex color E9D4CC looks on a white background.

## Color Contrast Check

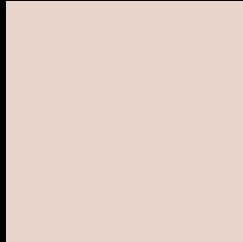
Large Text (above 18pt) WCAG AA × Fail

Any Text WCAG AA × Fail

Large Text (above 18pt) WCAG AAA × Fail

Any Text WCAG AAA × Fail

# Black Background



This preview shows how the Hex color E9D4CC looks on a black background.

## Color Contrast Check

Large Text (above 18pt) WCAG AA ✓ Pass

Any Text WCAG AA ✓ Pass

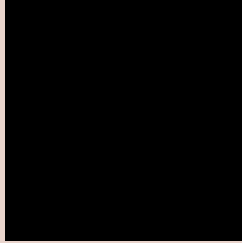
Large Text (above 18pt) WCAG AAA ✓ Pass

Any Text WCAG AAA ✓ Pass

If you want to check with other color combinations, try the [Color Contrast Checker](#).



## Hex E9D4CC Background



This preview shows how black text looks on a background with the Hex color E9D4CC.

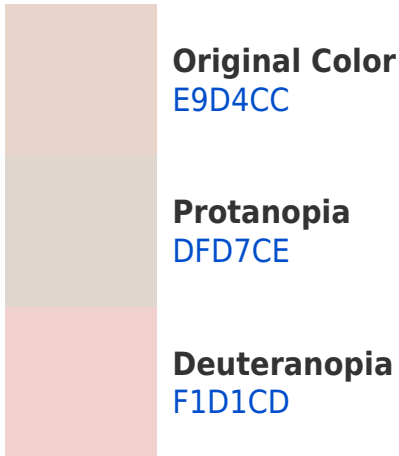


This preview shows how white text looks on a background with the Hex color E9D4CC.

# Color Blindness Simulation

Color vision deficiency is a very complex topic, and I could not describe the different causes any better than Wikipedia does, so if you want to learn more, you should check out their [article about color blindness](#).

## Dichromacy





**Tritanopia**  
ECD1E1

# Trichromacy



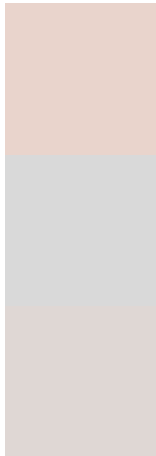
**Original Color**  
E9D4CC

**Protanomaly**  
E3D6CD

**Deuteranomaly**  
EED2CD

**Tritanomaly**  
EBD2D9

# Monochromacy



**Original Color**  
E9D4CC

**Achromatopsia**  
D9D9D9

**Achromatomaly**  
DFD7D4

# CSS Examples

## Text

The CSS property to change the color of the text to Hex E9D4CC is called "color". The color property can be set on classes, ids or directly on the HTML element.

This example shows how text in the color #E9D4CC looks like.

```
.text, #text, p{  
    color:#E9D4CC  
}
```

If you want to add a text shadow in that color use the text-shadow property, you can generate a text shadow directly with our [CSS Text Shadow Generator](#).

Here you see how black text with a 4 pixel #E9D4CC colored shadow looks like.

```
.shadow{ text-shadow: 4px 4px 2px #E9D4CC }  
}
```

## Border

The CSS property to change the border of an element to Hex E9D4CC is called "border". The border property can be set on classes, ids or directly on the HTML element.

This example shows the color as border, it can be applied via the CSS property "border" or "border-color".

```
.border, #border, table{ border:4px solid #E9D4CC }  
}
```

If only the border color should be changed use the property `border-color`.

```
.border{ border-color:#E9D4CC }
```

If you want to add a box shadow in that color use:

Here you see how a box with a 4 pixel #E9D4CC colored shadow looks like.

```
.boxshadow{ -moz-box-shadow:4px 4px 4px  
4px #E9D4CC; -webkit-box-shadow:4px 4px  
4px 4px #E9D4CC; box-shadow:4px 4px 4px  
4px #E9D4CC }
```

# Background

The CSS property to change the background color of an element to Hex E9D4CC is called "background". The background property can be set on classes, ids or directly on the HTML element.

```
.background, #background, body{  
background:#E9D4CC }
```

If only the background color should be changed can be used:

```
.background{ background-color:#E9D4CC }
```

This example shows the color as background, it is applied via the CSS property "background".

To optimize and compress your CSS code, you can use our [online CSS compressor and optimizer](#) based on csstidy. If you want to create a linear or radial gradient as background or border, check our [CSS Gradient Generator](#).



Hey! You found this booklet interesting? Support Converting Colors with the new Membership Option!

The pro membership hides all ads, plus gives you double the colors in the color bucket, and more awesome pro features!

**[Learn more, Memberships starting at \\$2.50/m!](#)**

**Follow me  
on Twitter!**

@ConvertingColor