

Converting Colors

Hex(E9D7D6)

Have a look what the booklet for
Hex(E9D7D6) contains.

Hex(E9D7D6)	3
<i>Conversions</i>	4
<i>Details</i>	6
<i>Harmonies</i>	11
<i>Previews</i>	23
<i>Color Blindness Simulation</i>	26
<i>CSS Examples</i>	29

Color

Hex(E9D7D6)

Conversions

Conversions Part 1

Format	Color
Hex	E9D7D6
RGB	233, 215, 214
RGB Percent	91%, 84%, 84%
CMY	0.0863, 0.1569, 0.1608
CMYK	0.00, 0.08, 0.08, 0.09
HSL	3°, 30%, 88%
HSV	3°, 8%, 91%
XYZ	70.0423, 70.7796, 73.5885
YIQ	220.2680, 11.0490, 3.5050

Conversions

Conversions Part 2

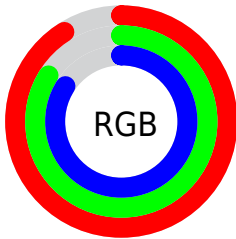
Format	Color
R _Y B	233, 215, 214
Decimal	15325142
CIE Lab	87.38, 6.03, 2.72
CIE LCh	87, 6.617, 24.301
Yxy	70.7796, 0.3267, 0.3301
Android (android.graphics.Color)	4293515222 (0xFFE9D7D6)
YUV	220.2680, -3.0901, 11.1660
Hunter-Lab	84.1306, 1.3804, 7.0308

Details

The Hex color **E9D7D6** is a light color, and the websafe version is hex **CCCCCC**. A complement of this color would be **D6E8E9**, and the grayscale version is **DCDCDC**.

A 20% lighter version of the original color is **FFFFFF**, and **B1A09F** is the 20% darker color. If you saturate the color by 10%, you get **E9C1BF**, and if you desaturate by 10%, it is **E9EDED**.

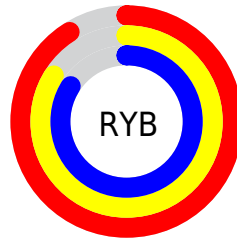
Distribution



Red (91%)

Green (84%)

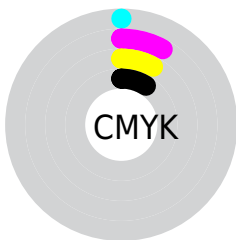
Blue (84%)



Red (91%)

Yellow (84%)

Blue (84%)

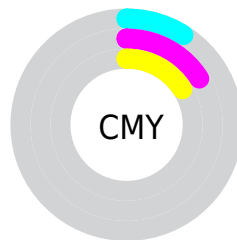


Cyan (0%)

Magenta (8%)

Yellow (8%)

Black (9%)



Cyan (9%)

Magenta (16%)

Yellow (16%)

Brightness & Saturation Gradients

These gradients show how the Hex color E9D7D6 changes by changing the brightness by 10 percent. The first figure shows a shift by +10% for each color and the second figure -10%.

Similar to the brightness gradients but the following saturation gradients show a change of the Hex color E9D7D6 by changing the saturation by 10% instead.

 E9D7D6

 E9D7D6

FFFFFF

 CDBBBA

 B1A09F

 978685

 7D6D6C

 645554

 4C3D3D

 352827

 1F1312

 000000

 E9D7D6

 E9D7D6

 E9C1BF

 E9EDED

 E9ABA7

 E9FFFF

 E99590

 E97F79

 E96962

 E9534A

 E93C33

 E9261C

 E91004

Harmonies

Analogous

The Analogous color harmony consists of three colors that are next to each other on the color wheel.



E7D7DC



E9D7D6



E7D8D1

Triad

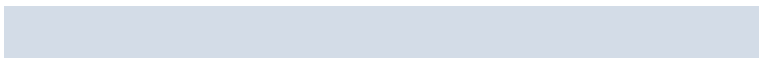
The Triadic color harmony groups three colors that are evenly spaced from another and form a triangle on the color wheel.



E9D7D6



D3DED3



D3DCE7

Complementary

The Complementary color scheme is a pair of colors which are on the opposite of each other on the color wheel.



E9D7D6



D6E8E9

Split Complementary

Split-complementary colors differ from the complementary color scheme. The scheme consists of three colors, the original color and two neighbors of the complement color.



CEDEE5



E9D7D6



CEDFD9

Square

The Square scheme is like the rectangle color scheme, but the four colors are evenly spaced on the color wheel.



E9D7D6



DBDCCF



CCDFE0



DBDAE6

Rectangle

The Rectangle color scheme consists of four colors that form a rectangle on the color wheel.



E9D7D6



E4D9CF



CCDFE0



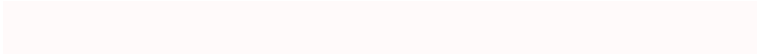
D1DCE7

Sweetspot

The Sweet Spot groups the original color and five complimentary colors.



E9D7D6



FFFAFA



E9D6E8



807D7D



000000



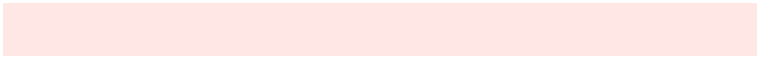
808080

Same Dimension

The Same Dimension uses a secret algorithm to generate beautiful new colors.



E9D7D6



FFE7E6



E9E0D6



756A6A



B50A00



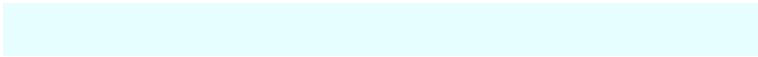
360300

Inverse Universe

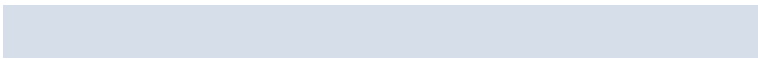
The Inverse Universe completely reimagines the original color for something new.



D6E8E9



E6FEFF



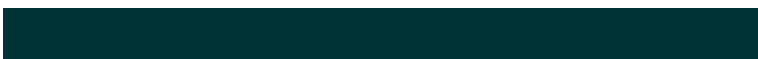
D6DFE9



6A7575



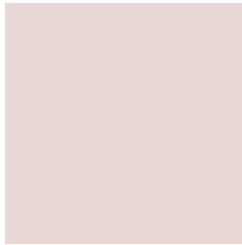
00ACB5



003336

Previews

White Background



This preview shows how the Hex color E9D7D6 looks on a white background.

Color Contrast Check

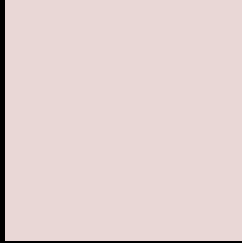
Large Text (above 18pt) WCAG AA × Fail

Any Text WCAG AA × Fail

Large Text (above 18pt) WCAG AAA × Fail

Any Text WCAG AAA × Fail

Black Background



This preview shows how the Hex color E9D7D6 looks on a black background.

Color Contrast Check

Large Text (above 18pt) WCAG AA ✓ Pass

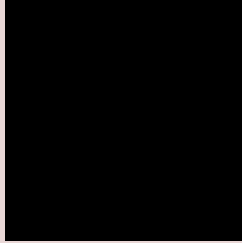
Any Text WCAG AA ✓ Pass

Large Text (above 18pt) WCAG AAA ✓ Pass

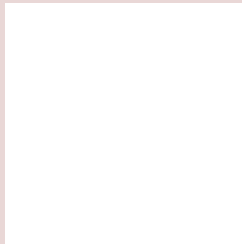
Any Text WCAG AAA ✓ Pass

If you want to check with other color combinations, try the [Color Contrast Checker](#).

Hex E9D7D6 Background



This preview shows how black text looks on a background with the Hex color E9D7D6.

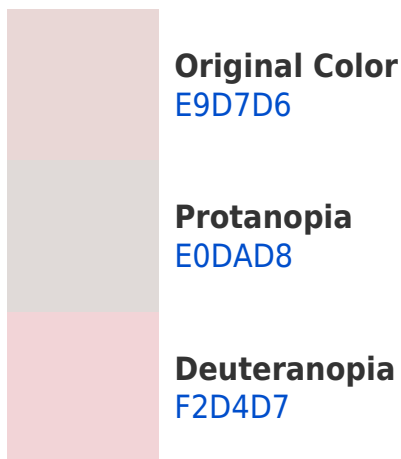


This preview shows how white text looks on a background with the Hex color E9D7D6.

Color Blindness Simulation

Color vision deficiency is a very complex topic, and I could not describe the different causes any better than Wikipedia does, so if you want to learn more, you should check out their [article about color blindness](#).

Dichromacy





Tritanopia
EBD5E5

Trichromacy



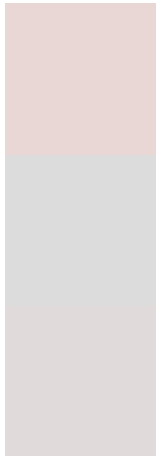
Original Color
E9D7D6

Protanomaly
E3D9D7

Deuteranomaly
EFD5D7

Tritanomaly
EAD6E0

Monochromacy



Original Color
E9D7D6

Achromatopsia
DCDCDC

Achromatomaly
E1DADA

CSS Examples

Text

The CSS property to change the color of the text to Hex E9D7D6 is called "color". The color property can be set on classes, ids or directly on the HTML element.

This example shows how text in the color #E9D7D6 looks like.

```
.text, #text, p{  
    color:#E9D7D6  
}
```

If you want to add a text shadow in that color use the text-shadow property, you can generate a text shadow directly with our [CSS Text Shadow Generator](#).

Here you see how black text with a 4 pixel #E9D7D6 colored shadow looks like.

```
.shadow{ text-shadow: 4px 4px 2px #E9D7D6
}
```

Border

The CSS property to change the border of an element to Hex E9D7D6 is called "border". The border property can be set on classes, ids or directly on the HTML element.

This example shows the color as border, it can be applied via the CSS property "border" or "border-color".

```
.border, #border, table{ border:4px solid
#E9D7D6 }
```

If only the border color should be changed use the property `border-color`.

```
.border{ border-color:#E9D7D6 }
```

If you want to add a box shadow in that color use:

Here you see how a box with a 4 pixel #E9D7D6 colored shadow looks like.

```
.boxshadow{ -moz-box-shadow:4px 4px 4px  
4px #E9D7D6; -webkit-box-shadow:4px 4px  
4px 4px #E9D7D6; box-shadow:4px 4px 4px  
4px #E9D7D6 }
```

Background

The CSS property to change the background color of an element to Hex E9D7D6 is called "background". The background property can be set on classes, ids or directly on the HTML element.

```
.background, #background, body{  
background:#E9D7D6 }
```

If only the background color should be changed can be used:

```
.background{ background-color:#E9D7D6 }
```

This example shows the color as background, it is applied via the CSS property "background".

To optimize and compress your CSS code, you can use our [online CSS compressor and optimizer](#) based on csstidy. If you want to create a linear or radial gradient as background or border, check our [CSS Gradient Generator](#).

Hey! You found this booklet interesting? Support Converting Colors with the new Membership Option!

The pro membership hides all ads, plus gives you double the colors in the color bucket, and more awesome pro features!

[Learn more, Memberships starting at \\$2.50/m!](#)

**Follow me
on Twitter!**

@ConvertingColor