

Converting Colors

Hex(E9D7DB)

Have a look what the booklet for
Hex(E9D7DB) contains.

Hex(E9D7DB)	3
<i>Conversions</i>	4
<i>Details</i>	6
<i>Harmonies</i>	11
<i>Previews</i>	23
<i>Color Blindness Simulation</i>	26
<i>CSS Examples</i>	29

Color

Hex(E9D7DB)

Conversions

Conversions Part 1

Format	Color
Hex	E9D7DB
RGB	233, 215, 219
RGB Percent	91%, 84%, 86%
CMY	0.0863, 0.1569, 0.1412
CMYK	0.00, 0.08, 0.06, 0.09
HSL	347°, 29%, 88%
HSV	347°, 8%, 91%
XYZ	70.6909, 71.0390, 77.0039
YIQ	220.8380, 9.4440, 5.0600

Conversions

Conversions Part 2

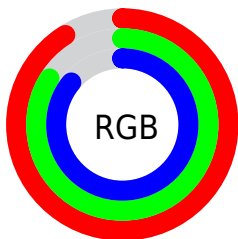
Format	Color
R _Y B	233, 215, 219
Decimal	15325147
CIE Lab	87.50, 6.88, 0.27
CIE LCh	88, 6.882, 2.216
Yxy	71.0390, 0.3232, 0.3248
Android (android.graphics.Color)	4293515227 (0xFFE9D7DB)
YUV	220.8380, -0.9061, 10.6661
Hunter-Lab	84.2846, 2.2128, 4.8309

Details

The Hex color **E9D7DB** is a light color, and the websafe version is hex **CCCCCC**. A complement of this color would be **D7E9E5**, and the grayscale version is **DDDDDD**.

A 20% lighter version of the original color is **FFFFFF**, and **B1A0A4** is the 20% darker color. If you saturate the color by 10%, you get **E9C0C9**, and if you desaturate by 10%, it is **E9EEED**.

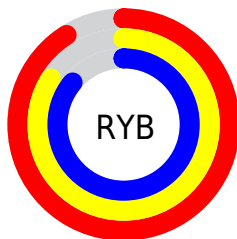
Distribution



Red (91%)

Green (84%)

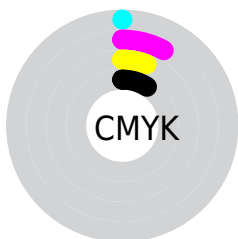
Blue (86%)



Red (91%)

Yellow (84%)

Blue (86%)

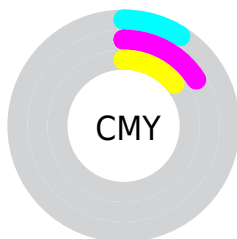


Cyan (0%)

Magenta (8%)

Yellow (6%)

Black (9%)



Cyan (9%)

Magenta (16%)

Yellow (14%)

Brightness & Saturation Gradients

These gradients show how the Hex color E9D7DB changes by changing the brightness by 10 percent. The first figure shows a shift by +10% for each color and the second figure -10%.

Similar to the brightness gradients but the following saturation gradients show a change of the Hex color E9D7DB by changing the saturation by 10% instead.

 E9D7DB

FFFFFF

 E9D7DB

 CDBBBF

 B1A0A4

 97868A

 7D6D70

 645558

 4C3D41

 35282B

 1F1316

 000000

 E9D7DB

 E9D7DB

 E9C0C9

 E9EEED

 E9A8B7

 E9FFFF

 E991A5

 E97A93

 E96380

 E94B6E

 E9345C

 E91D4A

 E90538

Harmonies

Analogous

The Analogous color harmony consists of three colors that are next to each other on the color wheel.



E5D8E1



E9D7DB



EAD7D5

Triad

The Triadic color harmony groups three colors that are evenly spaced from another and form a triangle on the color wheel.



E9D7DB



D9DDD0



CFDEE7

Complementary

The Complementary color scheme is a pair of colors which are on the opposite of each other on the color wheel.



E9D7DB



D7E9E5

Split Complementary

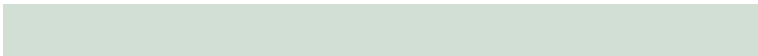
Split-complementary colors differ from the complementary color scheme. The scheme consists of three colors, the original color and two neighbors of the complement color.



CCDFE2



E9D7DB



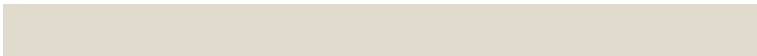
D2DFD5

Square

The Square scheme is like the rectangle color scheme, but the four colors are evenly spaced on the color wheel.



E9D7DB



E1DBCE



CDDFDC



D5DCE8

Rectangle

The Rectangle color scheme consists of four colors that form a rectangle on the color wheel.



E9D7DB



E8D8D1



CDDFDC



CDDEE5

Sweetspot

The Sweet Spot groups the original color and five complimentary colors.



E9D7DB



FFFAFB



E5D7E9



807D7E



000000



808080

Same Dimension

The Same Dimension uses a secret algorithm to generate beautiful new colors.



E9D7DB



FFE8ED



E9DCD7



756A6C



B50028



36000C

Inverse Universe

The Inverse Universe completely reimagines the original color for something new.



E9D7DB



FFE8ED



D7E4E9



756A6C



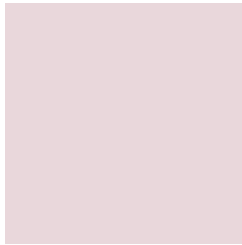
B50028



36000C

Previews

White Background



This preview shows how the Hex color E9D7DB looks on a white background.

Color Contrast Check

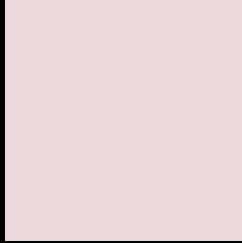
Large Text (above 18pt) WCAG AA × Fail

Any Text WCAG AA × Fail

Large Text (above 18pt) WCAG AAA × Fail

Any Text WCAG AAA × Fail

Black Background



This preview shows how the Hex color E9D7DB looks on a black background.

Color Contrast Check

Large Text (above 18pt) WCAG AA ✓ Pass

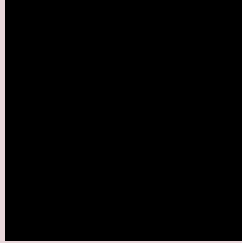
Any Text WCAG AA ✓ Pass

Large Text (above 18pt) WCAG AAA ✓ Pass

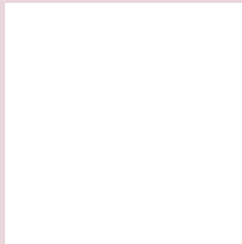
Any Text WCAG AAA ✓ Pass

If you want to check with other color combinations, try the [Color Contrast Checker](#).

Hex E9D7DB Background



This preview shows how black text looks on a background with the Hex color E9D7DB.

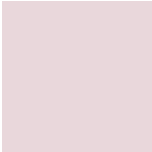
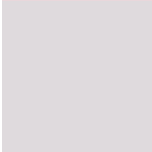
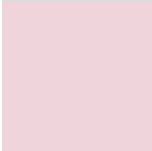


This preview shows how white text looks on a background with the Hex color E9D7DB.

Color Blindness Simulation

Color vision deficiency is a very complex topic, and I could not describe the different causes any better than Wikipedia does, so if you want to learn more, you should check out their [article about color blindness](#).

Dichromacy

	Original Color E9D7DB
	Protanopia DFDADD
	Deuteranopia F0D4DC



Tritanopia
EBD5E6

Trichromacy



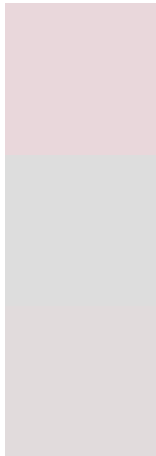
Original Color
E9D7DB

Protanomaly
E3D9DC

Deuteranomaly
EDD5DC

Tritanomaly
EAD6E2

Monochromacy



Original Color
E9D7DB

Achromatopsia
DDDDDD

Achromatomaly
E1DBDC

CSS Examples

Text

The CSS property to change the color of the text to Hex E9D7DB is called "color". The color property can be set on classes, ids or directly on the HTML element.

This example shows how text in the color #E9D7DB looks like.

```
.text, #text, p{  
    color:#E9D7DB  
}
```

If you want to add a text shadow in that color use the text-shadow property, you can generate a text shadow directly with our [CSS Text Shadow Generator](#).

Here you see how black text with a 4 pixel #E9D7DB colored shadow looks like.

```
.shadow{ text-shadow: 4px 4px 2px #E9D7DB
}
```

Border

The CSS property to change the border of an element to Hex E9D7DB is called "border". The border property can be set on classes, ids or directly on the HTML element.

This example shows the color as border, it can be applied via the CSS property "border" or "border-color".

```
.border, #border, table{ border:4px solid
#E9D7DB }
```

If only the border color should be changed use the property `border-color`.

```
.border{ border-color:#E9D7DB }
```

If you want to add a box shadow in that color use:

Here you see how a box with a 4 pixel #E9D7DB colored shadow looks like.

```
.boxshadow{ -moz-box-shadow:4px 4px 4px  
4px #E9D7DB; -webkit-box-shadow:4px 4px  
4px 4px #E9D7DB; box-shadow:4px 4px 4px  
4px #E9D7DB }
```

Background

The CSS property to change the background color of an element to Hex E9D7DB is called "background". The background property can be set on classes, ids or directly on the HTML element.

```
.background, #background, body{  
background:#E9D7DB }
```

If only the background color should be changed can be used:

```
.background{ background-color:#E9D7DB }
```

This example shows the color as background, it is applied via the CSS property "background".

To optimize and compress your CSS code, you can use our [online CSS compressor and optimizer](#) based on csstidy. If you want to create a linear or radial gradient as background or border, check our [CSS Gradient Generator](#).

Hey! You found this booklet interesting? Support Converting Colors with the new Membership Option!

The pro membership hides all ads, plus gives you double the colors in the color bucket, and more awesome pro features!

[Learn more, Memberships starting at \\$2.50/m!](#)

**Follow me
on Twitter!**

@ConvertingColor