

Converting Colors

Hex(E9D9D7)

Have a look what the booklet for
Hex(E9D9D7) contains.

Hex(E9D9D7)	3
<i>Conversions</i>	4
<i>Details</i>	6
<i>Harmonies</i>	11
<i>Previews</i>	23
<i>Color Blindness Simulation</i>	26
<i>CSS Examples</i>	29

Color

Hex(E9D9D7)

Conversions

Conversions Part 1

Format	Color
Hex	E9D9D7
RGB	233, 217, 215
RGB Percent	91%, 85%, 84%
CMY	0.0863, 0.1490, 0.1569
CMYK	0.00, 0.07, 0.08, 0.09
HSL	7°, 29%, 88%
HSV	7°, 8%, 91%
XYZ	70.6829, 71.8556, 74.4341
YIQ	221.5560, 10.1780, 2.7700

Conversions

Conversions Part 2

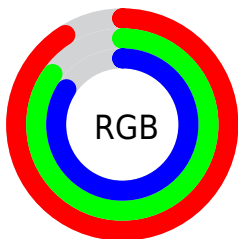
Format	Color
R _Y B	233, 217, 215
Decimal	15325655
CIE Lab	87.90, 5.16, 2.95
CIE LCh	88, 5.941, 29.792
Yxy	71.8556, 0.3258, 0.3312
Android (android.graphics.Color)	4293515735 (0xFFE9D9D7)
YUV	221.5560, -3.2321, 10.0364
Hunter-Lab	84.7677, 0.4973, 7.2751

Details

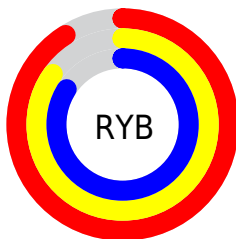
The Hex color **E9D9D7** is a light color, and the websafe version is hex **CCCCCC**. A complement of this color would be **D7E7E9**, and the grayscale version is **DEDEDE**.

A 20% lighter version of the original color is **FFFFFF**, and **B1A2A0** is the 20% darker color. If you saturate the color by 10%, you get **E9C4C0**, and if you desaturate by 10%, it is **E9EEEE**.

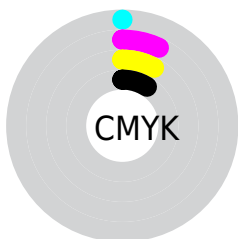
Distribution



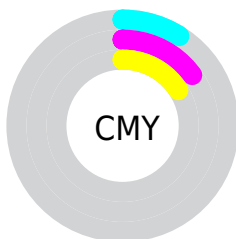
- Red (91%)
- Green (85%)
- Blue (84%)



- Red (91%)
- Yellow (85%)
- Blue (84%)



- Cyan (0%)
- Magenta (7%)
- Yellow (8%)
- Black (9%)



- Cyan (9%)
- Magenta (15%)
- Yellow (16%)

Brightness & Saturation Gradients

These gradients show how the Hex color E9D9D7 changes by changing the brightness by 10 percent. The first figure shows a shift by +10% for each color and the second figure -10%.

Similar to the brightness gradients but the following saturation gradients show a change of the Hex color E9D9D7 by changing the saturation by 10% instead.

 E9D9D7

FFFFFF

 E9D9D7

 CDBDBB

 B1A2A0

 978886

 7D6F6D

 645655

 4C3F3D

 352928

 1F1513

 000000

 E9D9D7

 E9D9D7

 E9C4C0

 E9EEEE

 E9B0A8

 E9FFFF

 E99B91

 E9867A

 E97163

 E95D4B

 E94834

 E9331D

 E91F05

Harmonies

Analogous

The Analogous color harmony consists of three colors that are next to each other on the color wheel.



E8D9DD



E9D9D7



E7DAD3

Triad

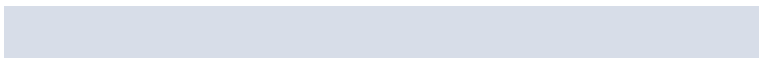
The Triadic color harmony groups three colors that are evenly spaced from another and form a triangle on the color wheel.



E9D9D7



D5DFD7



D7DDE8

Complementary

The Complementary color scheme is a pair of colors which are on the opposite of each other on the color wheel.



E9D9D7



D7E7E9

Split Complementary

Split-complementary colors differ from the complementary color scheme. The scheme consists of three colors, the original color and two neighbors of the complement color.



D1DFE6



E9D9D7



D0E0DC

Square

The Square scheme is like the rectangle color scheme, but the four colors are evenly spaced on the color wheel.



E9D9D7



DBDED3



CFE0E2



DEDBE6

Rectangle

The Rectangle color scheme consists of four colors that form a rectangle on the color wheel.



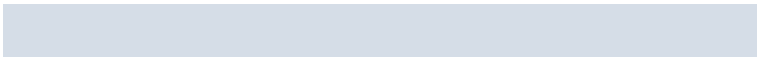
E9D9D7



E3DBD1



CFE0E2



D5DDE7

Sweetspot

The Sweet Spot groups the original color and five complimentary colors.



E9D9D7



FFFAFA



E9D7E7



807D7D



000000



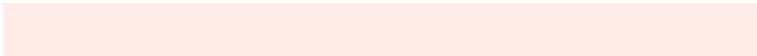
808080

Same Dimension

The Same Dimension uses a secret algorithm to generate beautiful new colors.



E9D9D7



FFEBE8



E9E2D7



756B6A



B51400



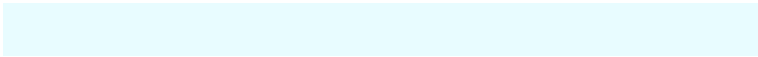
360600

Inverse Universe

The Inverse Universe completely reimagines the original color for something new.



D7E7E9



E8FCFF



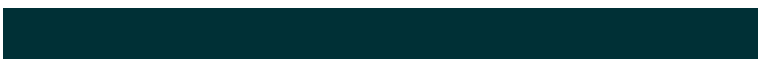
D7DEE9



6A7475



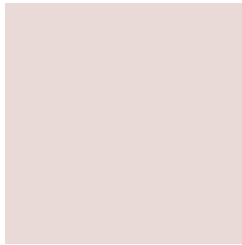
00A1B5



003036

Previews

White Background



This preview shows how the Hex color E9D9D7 looks on a white background.

Color Contrast Check

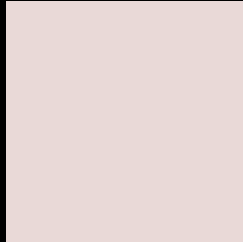
Large Text (above 18pt) WCAG AA × Fail

Any Text WCAG AA × Fail

Large Text (above 18pt) WCAG AAA × Fail

Any Text WCAG AAA × Fail

Black Background



This preview shows how the Hex color E9D9D7 looks on a black background.

Color Contrast Check

Large Text (above 18pt) WCAG AA ✓ Pass

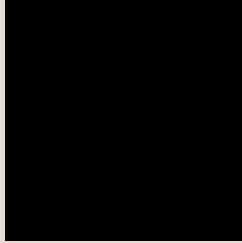
Any Text WCAG AA ✓ Pass

Large Text (above 18pt) WCAG AAA ✓ Pass

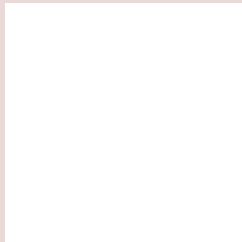
Any Text WCAG AAA ✓ Pass

If you want to check with other color combinations, try the [Color Contrast Checker](#).

Hex E9D9D7 Background



This preview shows how black text looks on a background with the Hex color E9D9D7.

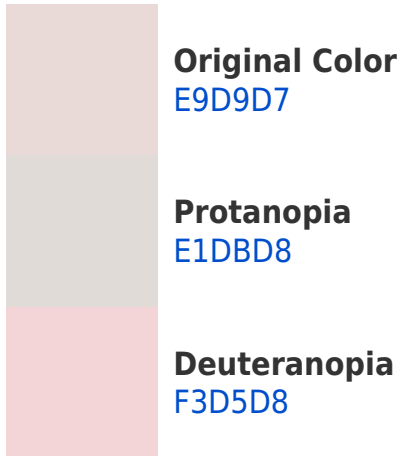


This preview shows how white text looks on a background with the Hex color E9D9D7.

Color Blindness Simulation

Color vision deficiency is a very complex topic, and I could not describe the different causes any better than Wikipedia does, so if you want to learn more, you should check out their [article about color blindness](#).

Dichromacy





Tritanopia
EBD6E7

Trichromacy



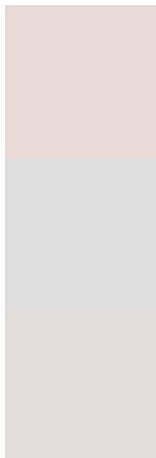
Original Color
E9D9D7

Protanomaly
E4DAD8

Deuteranomaly
EFD6D8

Tritanomaly
EAD7E1

Monochromacy



Original Color
E9D9D7

Achromatopsia
DEDEDE

Achromatomaly
E2DCDB

CSS Examples

Text

The CSS property to change the color of the text to Hex E9D9D7 is called "color". The color property can be set on classes, ids or directly on the HTML element.

This example shows how text in the color #E9D9D7 looks like.

```
.text, #text, p{  
    color:#E9D9D7  
}
```

If you want to add a text shadow in that color use the text-shadow property, you can generate a text shadow directly with our [CSS Text Shadow Generator](#).

Here you see how black text with a 4 pixel #E9D9D7 colored shadow looks like.

```
.shadow{ text-shadow: 4px 4px 2px #E9D9D7
}
```

Border

The CSS property to change the border of an element to Hex E9D9D7 is called "border". The border property can be set on classes, ids or directly on the HTML element.

This example shows the color as border, it can be applied via the CSS property "border" or "border-color".

```
.border, #border, table{ border:4px solid
#E9D9D7 }
```

If only the border color should be changed use the property `border-color`.

```
.border{ border-color:#E9D9D7 }
```

If you want to add a box shadow in that color use:

Here you see how a box with a 4 pixel #E9D9D7 colored shadow looks like.

```
.boxshadow{ -moz-box-shadow:4px 4px 4px  
4px #E9D9D7; -webkit-box-shadow:4px 4px  
4px 4px #E9D9D7; box-shadow:4px 4px 4px  
4px #E9D9D7 }
```

Background

The CSS property to change the background color of an element to Hex E9D9D7 is called "background". The background property can be set on classes, ids or directly on the HTML element.

```
.background, #background, body{  
background:#E9D9D7 }
```

If only the background color should be changed can be used:

```
.background{ background-color:#E9D9D7 }
```

This example shows the color as background, it is applied via the CSS property "background".

To optimize and compress your CSS code, you can use our [online CSS compressor and optimizer](#) based on csstidy. If you want to create a linear or radial gradient as background or border, check our [CSS Gradient Generator](#).

Hey! You found this booklet interesting? Support Converting Colors with the new Membership Option!

The pro membership hides all ads, plus gives you double the colors in the color bucket, and more awesome pro features!

[Learn more, Memberships starting at \\$2.50/m!](#)

**Follow me
on Twitter!**

@ConvertingColor