

# Converting Colors

Hex(EA366C)

Have a look what the booklet for  
Hex(EA366C) contains.

<b>Hex(EA366C)</b> .....	3
<i><b>Conversions</b></i> .....	4
<i><b>Details</b></i> .....	6
<i><b>Harmonies</b></i> .....	11
<i><b>Previews</b></i> .....	23
<i><b>Color Blindness Simulation</b></i> .....	26
<i><b>CSS Examples</b></i> .....	29

# Color

Hex(EA366C)

# Conversions

## Conversions Part 1

Format	Color
Hex	EA366C
RGB	234, 54, 108
RGB Percent	92%, 21%, 42%
CMY	0.0824, 0.7882, 0.5765
CMYK	0.00, 0.77, 0.54, 0.08
HSL	342°, 81%, 56%
HSV	342°, 77%, 92%
XYZ	37.9576, 21.2135, 16.2814
YIQ	113.9760, 89.9460, 54.9540

# Conversions

## Conversions Part 2

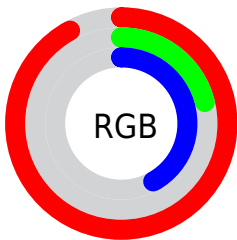
Format	Color
<b>R<sub>YB</sub></b>	234, 54, 108
Decimal	15349356
CIE Lab	53.18, 70.01, 13.12
CIE LCh	53, 71.225, 10.619
Yxy	21.2135, 0.5031, 0.2812
Android (android.graphics.Color)	4293539436 (0xFFEA366C)
YUV	113.9760, -2.9462, 105.2610
Hunter-Lab	46.0581, 66.5047, 11.2818

# Details

The Hex color **EA366C** is a dark color, and the websafe version is hex **CC3366**. The color can be described as dark washed rose. A complement of this color would be **36EAB4**, and the grayscale version is **727272**.

A 20% lighter version of the original color is **FF759F**, and **AC003D** is the 20% darker color. If you saturate the color by 10%, you get **EA1F5C**, and if you desaturate by 10%, it is **EA4D7C**.

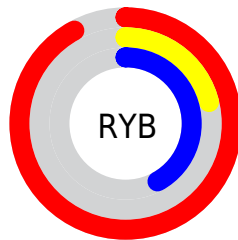
# Distribution



Red (92%)

Green (21%)

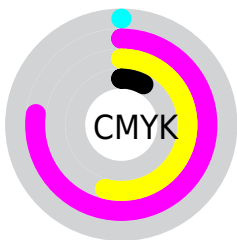
Blue (42%)



Red (92%)

Yellow (21%)

Blue (42%)

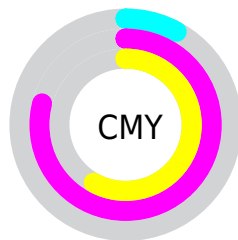


Cyan (0%)

Magenta (77%)

Yellow (54%)

Black (8%)



Cyan (8%)

Magenta (79%)

Yellow (58%)

# Brightness & Saturation Gradients

These gradients show how the Hex color EA366C changes by changing the brightness by 10 percent. The first figure shows a shift by +10% for each color and the second figure -10%.

Similar to the brightness gradients but the following saturation gradients show a change of the Hex color EA366C by changing the saturation by 10% instead.



 EA366C

 EA366C

FFFFFF

 CB0054

 FF759F

 AC003D

 FF92BA

 8D0028

 FFAFD6

 6E0014

 FFCDF2

 510003

 FFE8FF

 320002

 000000

 EA366C

 EA366C

 EA1F5C

 EA4D7C

 EA074B

 EA658D

 EA0046

 EA7C9D

 EA94AE

 EAABBE

 EAC2CE

 EADADF

 EAF1EF

 EAFFFF

# Harmonies

## Analogous

The Analogous color harmony consists of three colors that are next to each other on the color wheel.



D742A9



EA366C



DD4F31

# Triad

The Triadic color harmony groups three colors that are evenly spaced from another and form a triangle on the color wheel.



EA366C



3E910B



0091F3

# Complementary

The Complementary color scheme is a pair of colors which are on the opposite of each other on the color wheel.



EA366C



36EAB4

# Split Complementary

Split-complementary colors differ from the complementary color scheme. The scheme consists of three colors, the original color and two neighbors of the complement color.



0099CE



EA366C



009854

# Square

The Square scheme is like the rectangle color scheme, but the four colors are evenly spaced on the color wheel.



EA366C



868300



009A94



007FF9

# Rectangle

The Rectangle color scheme consists of four colors that form a rectangle on the color wheel.



EA366C



C76400



009A94



0094EA



# Sweetspot

The Sweet Spot groups the original color and five complimentary colors.



EA366C



FFC4D6



B436EA



805C67



000000



808080



# Same Dimension

The Same Dimension uses a secret algorithm to generate beautiful new colors.



EA366C



FF145B



EA5A36



756A6D



B50036



360010



# Inverse Universe

The Inverse Universe completely reimagines the original color for something new.



EA366C



FF145B



36C6EA



756A6D



B50036



360010



# Previews

## White Background



This preview shows how the Hex color EA366C looks on a white background.

## Color Contrast Check

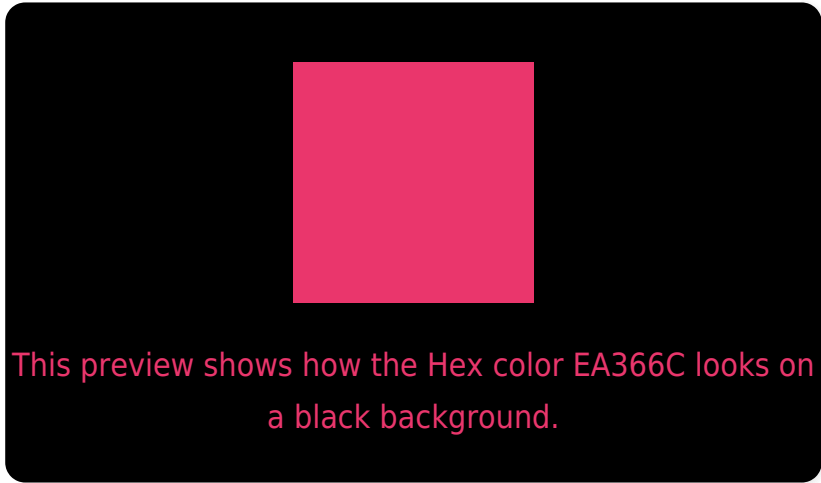
Large Text (above 18pt) WCAG AA ✓ Pass

Any Text WCAG AA × Fail

Large Text (above 18pt) WCAG AAA × Fail

Any Text WCAG AAA × Fail

# Black Background



## Color Contrast Check

Large Text (above 18pt) WCAG AA ✓ Pass

Any Text WCAG AA ✓ Pass

Large Text (above 18pt) WCAG AAA ✓ Pass

Any Text WCAG AAA × Fail

If you want to check with other color combinations, try the [Color Contrast Checker](#).



## Hex EA366C Background



This preview shows how black text looks on a background with the Hex color EA366C.



This preview shows how white text looks on a background with the Hex color EA366C.

# Color Blindness Simulation

Color vision deficiency is a very complex topic, and I could not describe the different causes any better than Wikipedia does, so if you want to learn more, you should check out their [article about color blindness](#).


## Dichromacy



**Original Color**  
EA366C

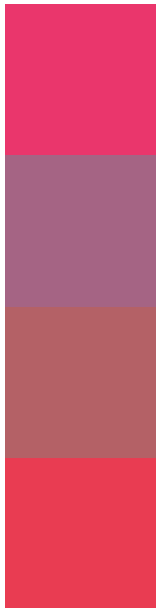
**Protanopia**  
7D7F91

**Deuteranopia**  
957A63



**Tritanopia**  
E84043

# Trichromacy



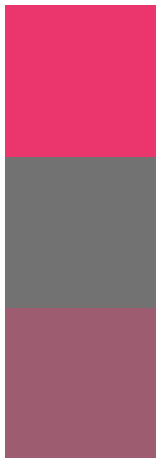
**Original Color**  
EA366C

**Protanomaly**  
A56484

**Deuteranomaly**  
B46166

**Tritanomaly**  
E93C52

# Monochromacy



**Original Color**  
EA366C

**Achromatopsia**  
727272

**Achromatomaly**  
9E5C70

# CSS Examples

## Text

The CSS property to change the color of the text to Hex EA366C is called "color". The color property can be set on classes, ids or directly on the HTML element.

This example shows how text in the color #EA366C looks like.

```
.text, #text, p{  
    color:#EA366C  
}
```

If you want to add a text shadow in that color use the text-shadow property, you can generate a text shadow directly with our [CSS Text Shadow Generator](#).

Here you see how black text with a 4 pixel #EA366C colored shadow looks like.

```
.shadow{ text-shadow: 4px 4px 2px #EA366C
}
```

## Border

The CSS property to change the border of an element to Hex EA366C is called "border". The border property can be set on classes, ids or directly on the HTML element.

This example shows the color as border, it can be applied via the CSS property "border" or "border-color".

```
.border, #border, table{ border:4px solid
#EA366C }
```

If only the border color should be changed use the property `border-color`.

```
.border{ border-color:#EA366C }
```

If you want to add a box shadow in that color use:

Here you see how a box with a 4 pixel #EA366C colored shadow looks like.

```
.boxshadow{ -moz-box-shadow:4px 4px 4px  
4px #EA366C; -webkit-box-shadow:4px 4px  
4px 4px #EA366C; box-shadow:4px 4px 4px  
4px #EA366C }
```

# Background

The CSS property to change the background color of an element to Hex EA366C is called "background". The background property can be set on classes, ids or directly on the HTML element.

```
.background, #background, body{  
background:#EA366C }
```

If only the background color should be changed can be used:

```
.background{ background-color:#EA366C }
```

This example shows the color as background, it is applied via the CSS property "background".

To optimize and compress your CSS code, you can use our [online CSS compressor and optimizer](#) based on csstidy. If you want to create a linear or radial gradient as background or border, check our [CSS Gradient Generator](#).



Hey! You found this booklet interesting? Support Converting Colors with the new Membership Option!

The pro membership hides all ads, plus gives you double the colors in the color bucket, and more awesome pro features!

**[Learn more, Memberships starting at \\$2.50/m!](#)**

**Follow me  
on Twitter!**

@ConvertingColor