

Converting Colors

Hex(EA376C)

Have a look what the booklet for
Hex(EA376C) contains.

Hex(EA376C)	3
<i>Conversions</i>	4
<i>Details</i>	6
<i>Harmonies</i>	11
<i>Previews</i>	23
<i>Color Blindness Simulation</i>	26
<i>CSS Examples</i>	29

Color

Hex(EA376C)

Conversions

Conversions Part 1

Format	Color
Hex	EA376C
RGB	234, 55, 108
RGB Percent	92%, 22%, 42%
CMY	0.0824, 0.7843, 0.5765
CMYK	0.00, 0.76, 0.54, 0.08
HSL	342°, 81%, 57%
HSV	342°, 76%, 92%
XYZ	38.0046, 21.3075, 16.2971
YIQ	114.5630, 89.6710, 54.4310

Conversions

Conversions Part 2

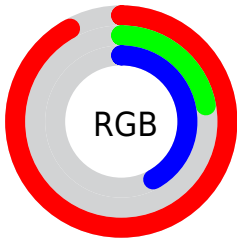
Format	Color
RYB	234, 55, 108
Decimal	15349612
CIELab	53.28, 69.72, 13.27
CIELCh	53, 70.969, 10.774
Yxy	21.3075, 0.5026, 0.2818
Android (android.graphics.Color)	4293539692 (0xFFEA376C)
YUV	114.5630, -3.2356, 104.7462
Hunter-Lab	46.1601, 66.1831, 11.3794

Details

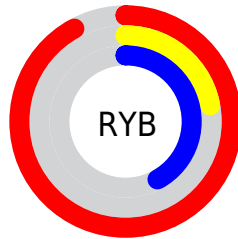
The Hex color **EA376C** is a dark color, and the websafe version is hex **CC3366**. The color can be described as dark washed rose. A complement of this color would be **37EAB5**, and the grayscale version is **737373**.

A 20% lighter version of the original color is **FF759F**, and **AC003D** is the 20% darker color. If you saturate the color by 10%, you get **EA205C**, and if you desaturate by 10%, it is **EA4E7C**.

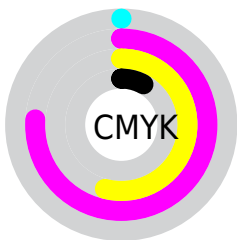
Distribution



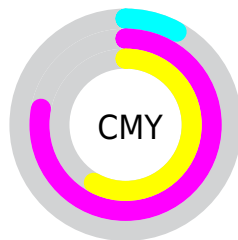
- Red (92%)
- Green (22%)
- Blue (42%)



- Red (92%)
- Yellow (22%)
- Blue (42%)



- Cyan (0%)
- Magenta (76%)
- Yellow (54%)
- Black (8%)



- Cyan (8%)
- Magenta (78%)
- Yellow (58%)

Brightness & Saturation Gradients

These gradients show how the Hex color EA376C changes by changing the brightness by 10 percent. The first figure shows a shift by +10% for each color and the second figure -10%.

Similar to the brightness gradients but the following saturation gradients show a change of the Hex color EA376C by changing the saturation by 10% instead.

 EA376C

 EA376C

FFFFFF

 CB0354

 FF759F

 AC003D

 FF93BA

 8D0028

 FFB0D6

 6E0014

 FFCDF2

 510003

 FFE0FF

 330002

 000000

 EA376C

 EA376C

 EA205C

 EA4E7C

 EA084B

 EA668D

 EA0045

 EA7D9D

 EA95AE

 EAACBE

 EAC3CF

 EADBDF

 EAF2F0

 EAFFFF

Harmonies

Analogous

The Analogous color harmony consists of three colors that are next to each other on the color wheel.



D743A9



EA376C



DD5031

Triad

The Triadic color harmony groups three colors that are evenly spaced from another and form a triangle on the color wheel.



EA376C



3E910D



0091F3

Complementary

The Complementary color scheme is a pair of colors which are on the opposite of each other on the color wheel.



EA376C



37EAB5

Split Complementary

Split-complementary colors differ from the complementary color scheme. The scheme consists of three colors, the original color and two neighbors of the complement color.



0099CE



EA376C



009854

Square

The Square scheme is like the rectangle color scheme, but the four colors are evenly spaced on the color wheel.



EA376C



868400



009A94



0080F9

Rectangle

The Rectangle color scheme consists of four colors that form a rectangle on the color wheel.



EA376C



C76400



009A94



0094EA

Sweetspot

The Sweet Spot groups the original color and five complimentary colors.



EA376C



FFC4D6



B437EA



805C66



000000



808080

Same Dimension

The Same Dimension uses a secret algorithm to generate beautiful new colors.



EA376C



FF145A



EA5B37



756A6D



B50036



360010

Inverse Universe

The Inverse Universe completely reimagines the original color for something new.



EA376C



FF145A



37C6EA



756A6D



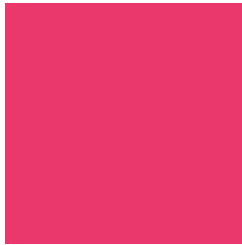
B50036



360010

Previews

White Background



This preview shows how the Hex color EA376C looks on a white background.

Color Contrast Check

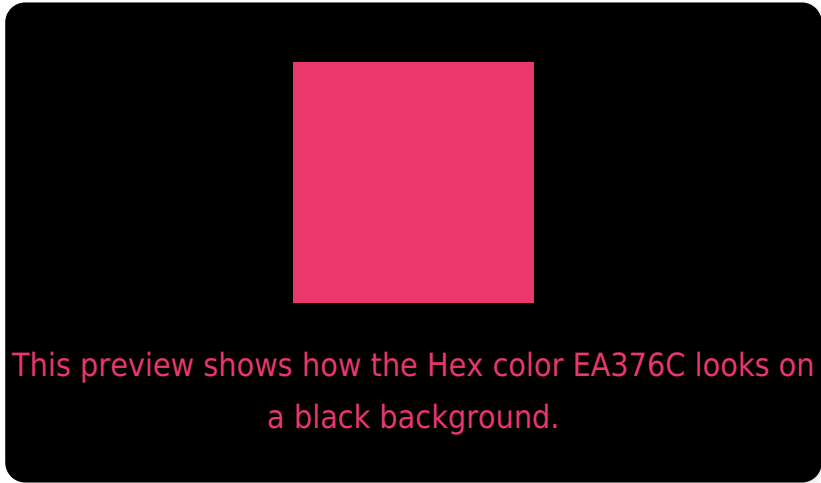
Large Text (above 18pt) WCAG AA ✓ Pass

Any Text WCAG AA × Fail

Large Text (above 18pt) WCAG AAA × Fail

Any Text WCAG AAA × Fail

Black Background



Color Contrast Check

Large Text (above 18pt) WCAG AA ✓ Pass

Any Text WCAG AA ✓ Pass

Large Text (above 18pt) WCAG AAA ✓ Pass

Any Text WCAG AAA × Fail

If you want to check with other color combinations, try the [Color Contrast Checker](#).

Hex EA376C Background



This preview shows how black text looks on a background with the Hex color EA376C.



This preview shows how white text looks on a background with the Hex color EA376C.

Color Blindness Simulation

Color vision deficiency is a very complex topic, and I could not describe the different causes any better than Wikipedia does, so if you want to learn more, you should check out their [article about color blindness](#).


Dichromacy



Original Color
EA376C

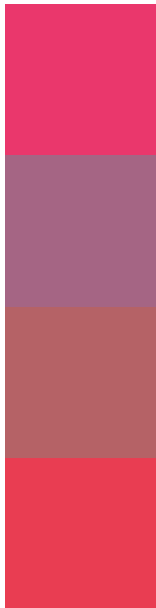
Protanopia
7D7F91

Deuteranopia
967B63



Tritanopia
E84143

Trichromacy



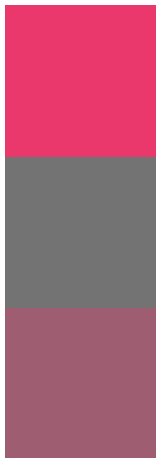
Original Color
EA376C

Protanomaly
A56584

Deuteranomaly
B56266

Tritanomaly
E93D52

Monochromacy



Original Color
EA376C

Achromatopsia
737373

Achromatomaly
9E5D70

CSS Examples

Text

The CSS property to change the color of the text to Hex EA376C is called "color". The color property can be set on classes, ids or directly on the HTML element.

This example shows how text in the color #EA376C looks like.

```
.text, #text, p{  
    color:#EA376C  
}
```

If you want to add a text shadow in that color use the text-shadow property, you can generate a text shadow directly with our [CSS Text Shadow Generator](#).

Here you see how black text with a 4 pixel #EA376C colored shadow looks like.

```
.shadow{ text-shadow: 4px 4px 2px #EA376C
}
```

Border

The CSS property to change the border of an element to Hex EA376C is called "border". The border property can be set on classes, ids or directly on the HTML element.

This example shows the color as border, it can be applied via the CSS property "border" or "border-color".

```
.border, #border, table{ border:4px solid
#EA376C }
```

If only the border color should be changed use the property `border-color`.

```
.border{ border-color:#EA376C }
```

If you want to add a box shadow in that color use:

Here you see how a box with a 4 pixel #EA376C colored shadow looks like.

```
.boxshadow{ -moz-box-shadow:4px 4px 4px  
4px #EA376C; -webkit-box-shadow:4px 4px  
4px 4px #EA376C; box-shadow:4px 4px 4px  
4px #EA376C }
```

Background

The CSS property to change the background color of an element to Hex EA376C is called "background". The background property can be set on classes, ids or directly on the HTML element.

```
.background, #background, body{  
background:#EA376C }
```

If only the background color should be changed can be used:

```
.background{ background-color:#EA376C }
```

This example shows the color as background, it is applied via the CSS property "background".

To optimize and compress your CSS code, you can use our [online CSS compressor and optimizer](#) based on csstidy. If you want to create a linear or radial gradient as background or border, check our [CSS Gradient Generator](#).

Hey! You found this booklet interesting? Support Converting Colors with the new Membership Option!

The pro membership hides all ads, plus gives you double the colors in the color bucket, and more awesome pro features!

[Learn more, Memberships starting at \\$2.50/m!](#)

**Follow me
on Twitter!**

@ConvertingColor