

Converting Colors

Hex(EA4374)

Have a look what the booklet for
Hex(EA4374) contains.

Hex(EA4374)	3
<i>Conversions</i>	4
<i>Details</i>	6
<i>Harmonies</i>	11
<i>Previews</i>	23
<i>Color Blindness Simulation</i>	26
<i>CSS Examples</i>	29

Color

Hex(EA4374)

Conversions

Conversions Part 1

Format	Color
Hex	EA4374
RGB	234, 67, 116
RGB Percent	92%, 26%, 45%
CMY	0.0824, 0.7373, 0.5451
CMYK	0.00, 0.71, 0.50, 0.08
HSL	342°, 80%, 59%
HSV	342°, 71%, 92%
XYZ	39.0912, 22.7677, 18.8573
YIQ	122.5190, 83.8030, 50.6430

Conversions

Conversions Part 2

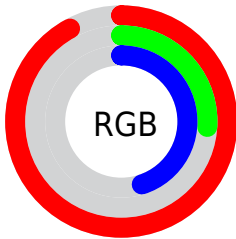
Format	Color
R_YB	234, 67, 116
Decimal	15352692
CIE _{Lab}	54.83, 66.52, 10.64
CIE _{LCh}	55, 67.370, 9.090
Yxy	22.7677, 0.4843, 0.2821
Android (android.graphics.Color)	4293542772 (0xFFEA4374)
YUV	122.5190, -3.2139, 97.7688
Hunter-Lab	47.7155, 62.7351, 9.9693

Details

The Hex color **EA4374** is a dark color, and the websafe version is hex **CC3366**. The color can be described as middle muted rose. A complement of this color would be **43EAB9**, and the grayscale version is **7A7A7A**.

A 20% lighter version of the original color is **FF7EA8**, and **AC0044** is the 20% darker color. If you saturate the color by 10%, you get **EA2C63**, and if you desaturate by 10%, it is **EA5A85**.

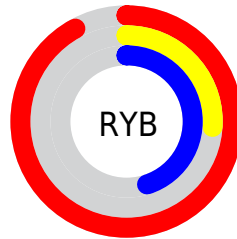
Distribution



Red (92%)

Green (26%)

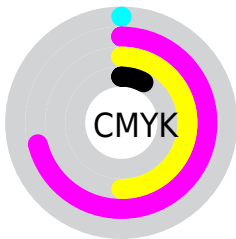
Blue (45%)



Red (92%)

Yellow (26%)

Blue (45%)

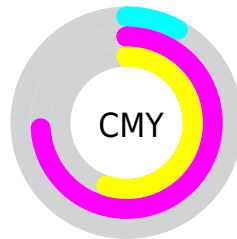


Cyan (0%)

Magenta (71%)

Yellow (50%)

Black (8%)



Cyan (8%)

Magenta (74%)

Yellow (55%)

Brightness & Saturation Gradients

These gradients show how the Hex color EA4374 changes by changing the brightness by 10 percent. The first figure shows a shift by +10% for each color and the second figure -10%.

Similar to the brightness gradients but the following saturation gradients show a change of the Hex color EA4374 by changing the saturation by 10% instead.

 EA4374

 EA4374

FFFFFF

 CB1F5C

 FF7EA8

 AC0044

 FF9BC3

 8E002E

 FFB8DF

 70001A

 FFD6FB

 530002

 FFF4FF

 350002

 030000

 000000

 EA4374

 EA4374

 EA2C63

 EA5A85

 EA1453

 EA7295

 EA0045

 EA89A6

 EAA1B6

 EAB8C7

 EACFD7

 EAE7E8

 EAFEF8

 EAFFFF

Harmonies

Analogous

The Analogous color harmony consists of three colors that are next to each other on the color wheel.



D54EAE



EA4374



E0563C

Triad

The Triadic color harmony groups three colors that are evenly spaced from another and form a triangle on the color wheel.



EA4374



4D941A



0095F0

Complementary

The Complementary color scheme is a pair of colors which are on the opposite of each other on the color wheel.



EA4374



43EAB9

Split Complementary

Split-complementary colors differ from the complementary color scheme. The scheme consists of three colors, the original color and two neighbors of the complement color.



009CCC



EA4374



009B57

Square

The Square scheme is like the rectangle color scheme, but the four colors are evenly spaced on the color wheel.



EA4374



8E8600



009E94



0084F7

Rectangle

The Rectangle color scheme consists of four colors that form a rectangle on the color wheel.



EA4374



CB6817



009E94



0098E7

Sweetspot

The Sweet Spot groups the original color and five complimentary colors.



EA4374



FFC9D9



B843EA



806069



000000



808080

Same Dimension

The Same Dimension uses a secret algorithm to generate beautiful new colors.



EA4374



FF2464



EA6443



756A6D



B50035



360010

Inverse Universe

The Inverse Universe completely reimagines the original color for something new.



EA4374



FF2464



43C9EA



756A6D



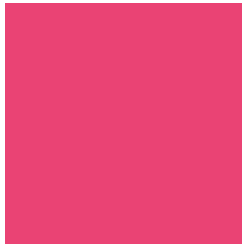
B50035



360010

Previews

White Background



This preview shows how the Hex color EA4374 looks on a white background.

Color Contrast Check

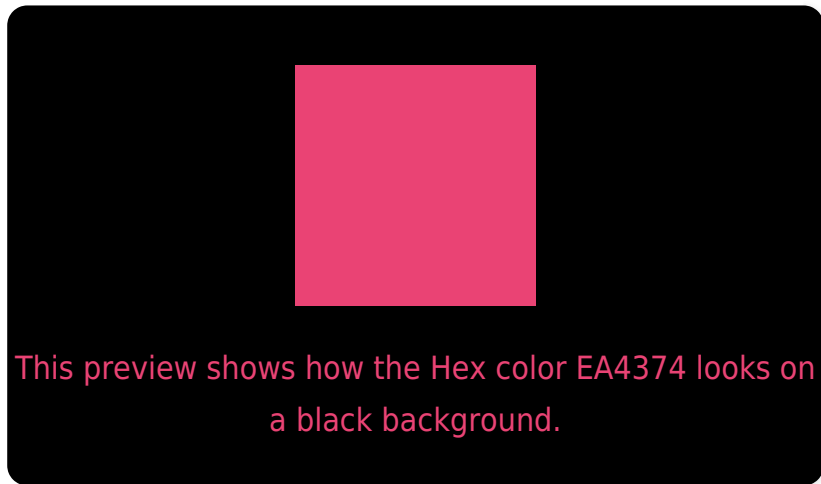
Large Text (above 18pt) WCAG AA ✓ Pass

Any Text WCAG AA × Fail

Large Text (above 18pt) WCAG AAA × Fail

Any Text WCAG AAA × Fail

Black Background



Color Contrast Check

Large Text (above 18pt) WCAG AA ✓ Pass

Any Text WCAG AA ✓ Pass

Large Text (above 18pt) WCAG AAA ✓ Pass

Any Text WCAG AAA × Fail

If you want to check with other color combinations, try the [Color Contrast Checker](#).

Hex EA4374 Background



This preview shows how black text looks on a background with the Hex color EA4374.



This preview shows how white text looks on a background with the Hex color EA4374.

Color Blindness Simulation

Color vision deficiency is a very complex topic, and I could not describe the different causes any better than Wikipedia does, so if you want to learn more, you should check out their [article about color blindness](#).

Dichromacy



Original Color
EA4374

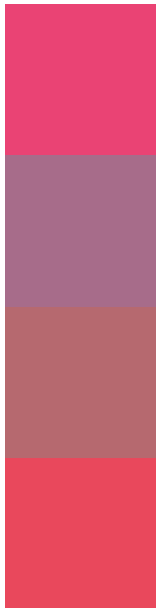
Protanopia
808396

Deuteranopia
997F6C



Tritanopia
E84B4F

Trichromacy



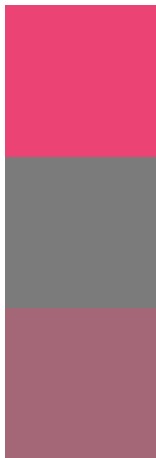
Original Color
EA4374

Protanomaly
A76C8A

Deuteranomaly
B6696F

Tritanomaly
E9485C

Monochromacy



Original Color
EA4374

Achromatopsia
7B7B7B

Achromatomaly
A36778

CSS Examples

Text

The CSS property to change the color of the text to Hex EA4374 is called "color". The color property can be set on classes, ids or directly on the HTML element.

This example shows how text in the color #EA4374 looks like.

```
.text, #text, p{  
    color:#EA4374  
}
```

If you want to add a text shadow in that color use the text-shadow property, you can generate a text shadow directly with our [CSS Text Shadow Generator](#).

Here you see how black text with a 4 pixel #EA4374 colored shadow looks like.

```
.shadow{ text-shadow: 4px 4px 2px #EA4374
}
```

Border

The CSS property to change the border of an element to Hex EA4374 is called "border". The border property can be set on classes, ids or directly on the HTML element.

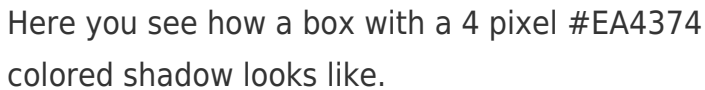
This example shows the color as border, it can be applied via the CSS property "border" or "border-color".

```
.border, #border, table{ border:4px solid
#EA4374 }
```

If only the border color should be changed use the property `border-color`.

```
.border{ border-color:#EA4374 }
```

If you want to add a box shadow in that color use:



Here you see how a box with a 4 pixel #EA4374 colored shadow looks like.

```
.boxshadow{ -moz-box-shadow:4px 4px 4px  
4px #EA4374; -webkit-box-shadow:4px 4px  
4px 4px #EA4374; box-shadow:4px 4px 4px  
4px #EA4374 }
```

Background

The CSS property to change the background color of an element to Hex EA4374 is called "background". The background property can be set on classes, ids or directly on the HTML element.

```
.background, #background, body{  
background:#EA4374 }
```

If only the background color should be changed can be used:

```
.background{ background-color:#EA4374 }
```

This example shows the color as background, it is applied via the CSS property "background".

To optimize and compress your CSS code, you can use our [online CSS compressor and optimizer](#) based on csstidy. If you want to create a linear or radial gradient as background or border, check our [CSS Gradient Generator](#).

Hey! You found this booklet interesting? Support Converting Colors with the new Membership Option!

The pro membership hides all ads, plus gives you double the colors in the color bucket, and more awesome pro features!

[Learn more, Memberships starting at \\$2.50/m!](#)

**Follow me
on Twitter!**

@ConvertingColor