

Converting Colors

Hex(EA477B)

Have a look what the booklet for
Hex(EA477B) contains.

Hex(EA477B)	3
<i>Conversions</i>	4
<i>Details</i>	6
<i>Harmonies</i>	11
<i>Previews</i>	23
<i>Color Blindness Simulation</i>	26
<i>CSS Examples</i>	29

Color

Hex(EA477B)

Conversions

Conversions Part 1

Format	Color
Hex	EA477B
RGB	234, 71, 123
RGB Percent	92%, 28%, 48%
CMY	0.0824, 0.7216, 0.5176
CMYK	0.00, 0.70, 0.47, 0.08
HSL	341°, 80%, 60%
HSV	341°, 70%, 92%
XYZ	39.7601, 23.4290, 21.1655
YIQ	125.6650, 80.4560, 50.7280

Conversions

Conversions Part 2

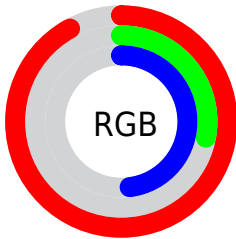
Format	Color
R_{YB}	234, 71, 123
Decimal	15353723
CIE _{Lab}	55.51, 65.70, 7.44
CIE _{LCh}	56, 66.124, 6.460
Yxy	23.4290, 0.4713, 0.2777
Android (android.graphics.Color)	4293543803 (0xFFEA477B)
YUV	125.6650, -1.3138, 95.0098
Hunter-Lab	48.4035, 61.9192, 7.9565

Details

The Hex color **EA477B** is a dark color, and the websafe version is hex **CC3366**. The color can be described as middle muted rose. A complement of this color would be **47EAB6**, and the grayscale version is **7E7E7E**.

A 20% lighter version of the original color is **FF82AF**, and **AD004B** is the 20% darker color. If you saturate the color by 10%, you get **EA306B**, and if you desaturate by 10%, it is **EA5E8B**.

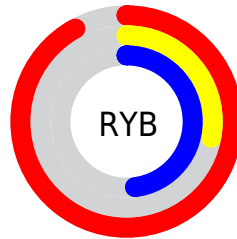
Distribution



Red (92%)

Green (28%)

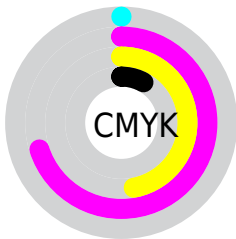
Blue (48%)



Red (92%)

Yellow (28%)

Blue (48%)

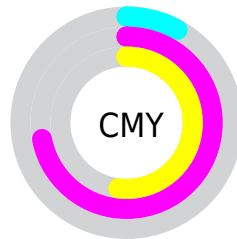


Cyan (0%)

Magenta (70%)

Yellow (47%)

Black (8%)



Cyan (8%)

Magenta (72%)

Yellow (52%)

Brightness & Saturation Gradients

These gradients show how the Hex color EA477B changes by changing the brightness by 10 percent. The first figure shows a shift by +10% for each color and the second figure -10%.

Similar to the brightness gradients but the following saturation gradients show a change of the Hex color EA477B by changing the saturation by 10% instead.

 EA477B

 EA477B

FFFFFF

 CB2562

 FF82AF

 AD004B

 FF9FCB

 8E0034

 FFBCE7

 710020

 FFD9FF

 540006

 FFF7FF

 370002

 080000

 000000

 EA477B

 EA477B

 EA306B

 EA5E8B

 EA185B

 EA769B

 EA014B

 EA8DAB

 EA004B

 EAA5BB

 EABCCB

 EAD3DB

 EAE8EB

 EAF8FA

 EAF8FF

Harmonies

Analogous

The Analogous color harmony consists of three colors that are next to each other on the color wheel.



D354B4



EA477B



E25744

Triad

The Triadic color harmony groups three colors that are evenly spaced from another and form a triangle on the color wheel.



EA477B



57941A



0097EE

Complementary

The Complementary color scheme is a pair of colors which are on the opposite of each other on the color wheel.



EA477B



47EAB6

Split Complementary

Split-complementary colors differ from the complementary color scheme. The scheme consists of three colors, the original color and two neighbors of the complement color.



009EC8



EA477B



009C54

Square

The Square scheme is like the rectangle color scheme, but the four colors are evenly spaced on the color wheel.



EA477B



948600



009F90



0088F8

Rectangle

The Rectangle color scheme consists of four colors that form a rectangle on the color wheel.



EA477B



D06821



009F90



009AE4

Sweetspot

The Sweet Spot groups the original color and five complimentary colors.



EA477B



FFC9DB



B447EA



80606A



000000



808080

Same Dimension

The Same Dimension uses a secret algorithm to generate beautiful new colors.



EA477B



FF296D



EA6247



756A6D



B5003A



360011

Inverse Universe

The Inverse Universe completely reimagines the original color for something new.



EA477B



FF296D



47CFEA



756A6D



B5003A



360011

Previews

White Background



This preview shows how the Hex color EA477B looks on a white background.

Color Contrast Check

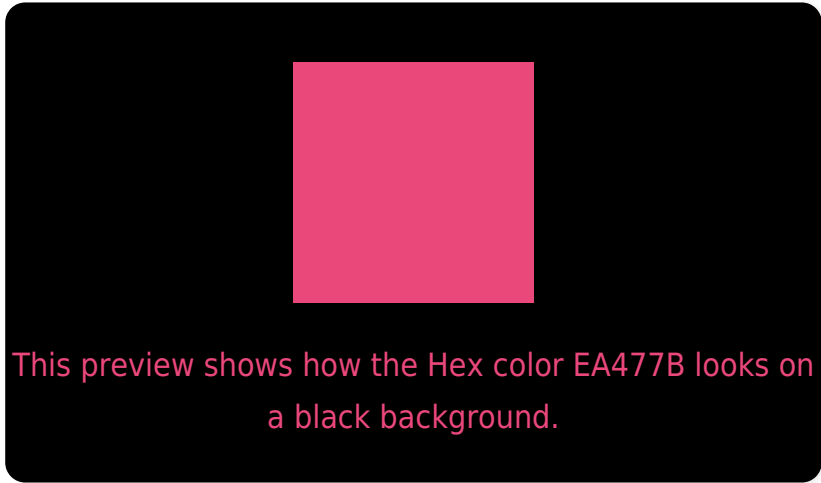
Large Text (above 18pt) WCAG AA ✓ Pass

Any Text WCAG AA × Fail

Large Text (above 18pt) WCAG AAA × Fail

Any Text WCAG AAA × Fail

Black Background



Color Contrast Check

Large Text (above 18pt) WCAG AA ✓ Pass

Any Text WCAG AA ✓ Pass

Large Text (above 18pt) WCAG AAA ✓ Pass

Any Text WCAG AAA × Fail

If you want to check with other color combinations, try the [Color Contrast Checker](#).

Hex EA477B Background



This preview shows how black text looks on a background with the Hex color EA477B.

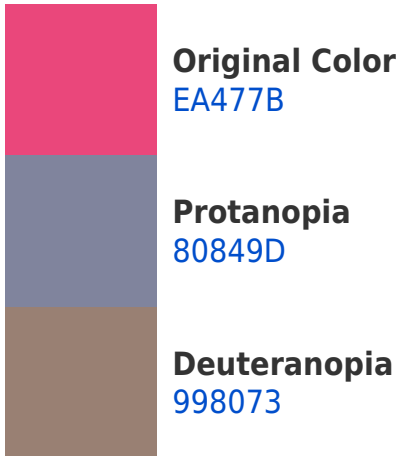


This preview shows how white text looks on a background with the Hex color EA477B.

Color Blindness Simulation

Color vision deficiency is a very complex topic, and I could not describe the different causes any better than Wikipedia does, so if you want to learn more, you should check out their [article about color blindness](#).

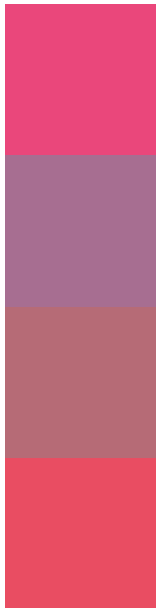
Dichromacy





Tritanopia
E85054

Trichromacy



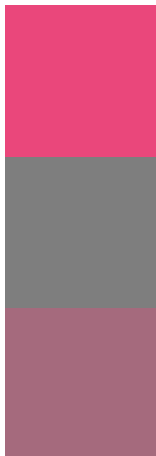
Original Color
EA477B

Protanomaly
A76E91

Deuteranomaly
B66B76

Tritanomaly
E94D62

Monochromacy



Original Color
EA477B

Achromatopsia
7E7E7E

Achromatomaly
A56A7D

CSS Examples

Text

The CSS property to change the color of the text to Hex EA477B is called "color". The color property can be set on classes, ids or directly on the HTML element.

This example shows how text in the color #EA477B looks like.

```
.text, #text, p{  
    color:#EA477B  
}
```

If you want to add a text shadow in that color use the text-shadow property, you can generate a text shadow directly with our [CSS Text Shadow Generator](#).

Here you see how black text with a 4 pixel #EA477B colored shadow looks like.

```
.shadow{ text-shadow: 4px 4px 2px #EA477B  
}
```

Border

The CSS property to change the border of an element to Hex EA477B is called "border". The border property can be set on classes, ids or directly on the HTML element.

This example shows the color as border, it can be applied via the CSS property "border" or "border-color".

```
.border, #border, table{ border:4px solid  
#EA477B }
```

If only the border color should be changed use the property `border-color`.

```
.border{ border-color:#EA477B }
```

If you want to add a box shadow in that color use:

Here you see how a box with a 4 pixel #EA477B colored shadow looks like.

```
.boxshadow{ -moz-box-shadow:4px 4px 4px  
4px #EA477B; -webkit-box-shadow:4px 4px  
4px 4px #EA477B; box-shadow:4px 4px 4px  
4px #EA477B }
```

Background

The CSS property to change the background color of an element to Hex EA477B is called "background". The background property can be set on classes, ids or directly on the HTML element.

```
.background, #background, body{  
background:#EA477B }
```

If only the background color should be changed can be used:

```
.background{ background-color:#EA477B }
```

This example shows the color as background, it is applied via the CSS property "background".

To optimize and compress your CSS code, you can use our [online CSS compressor and optimizer](#) based on csstidy. If you want to create a linear or radial gradient as background or border, check our [CSS Gradient Generator](#).

Hey! You found this booklet interesting? Support Converting Colors with the new Membership Option!

The pro membership hides all ads, plus gives you double the colors in the color bucket, and more awesome pro features!

[Learn more, Memberships starting at \\$2.50/m!](#)

**Follow me
on Twitter!**

@ConvertingColor