

# Converting Colors

Hex(EA488A)

Have a look what the booklet for  
Hex(EA488A) contains.

<b>Hex(EA488A)</b> .....	3
<i><b>Conversions</b></i> .....	4
<i><b>Details</b></i> .....	6
<i><b>Harmonies</b></i> .....	11
<i><b>Previews</b></i> .....	23
<i><b>Color Blindness Simulation</b></i> .....	26
<i><b>CSS Examples</b></i> .....	29

**Color**

**Hex(EA488A)**

# Conversions

## Conversions Part 1

Format	Color
Hex	EA488A
RGB	234, 72, 138
RGB Percent	92%, 28%, 54%
CMY	0.0824, 0.7176, 0.4588
CMYK	0.00, 0.69, 0.41, 0.08
HSL	336°, 79%, 60%
HSV	336°, 69%, 92%
XYZ	40.8365, 23.9621, 26.5176
YIQ	127.9620, 75.3660, 54.8700

# Conversions

## Conversions Part 2

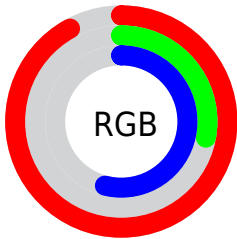
<b>Format</b>	<b>Color</b>
<b>RYB</b>	234, 72, 138
Decimal	15353994
CIELab	56.05, 66.73, -0.67
CIELCh	56, 66.732, 359.421
Yxy	23.9621, 0.4472, 0.2624
Android (android.graphics.Color)	4293544074 (0xFFEA488A)
YUV	127.9620, 4.9487, 92.9953
Hunter-Lab	48.9511, 63.2455, 2.1475

# Details

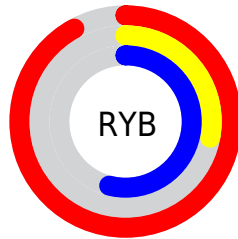
The Hex color **EA488A** is a dark color, and the websafe version is hex **FF6699**. The color can be described as middle muted rose. A complement of this color would be **48EAA8**, and the grayscale version is **808080**.

A 20% lighter version of the original color is **FF83BF**, and **AD0058** is the 20% darker color. If you saturate the color by 10%, you get **EA317C**, and if you desaturate by 10%, it is **EA5F98**.

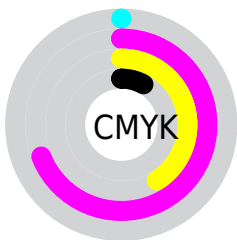
# Distribution



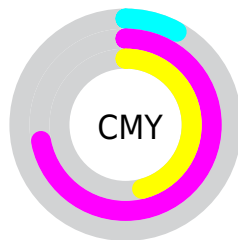
- Red (92%)
- Green (28%)
- Blue (54%)



- Red (92%)
- Yellow (28%)
- Blue (54%)



- Cyan (0%)
- Magenta (69%)
- Yellow (41%)
- Black (8%)



- Cyan (8%)
- Magenta (72%)
- Yellow (46%)

# Brightness & Saturation Gradients

These gradients show how the Hex color EA488A changes by changing the brightness by 10 percent. The first figure shows a shift by +10% for each color and the second figure -10%.

Similar to the brightness gradients but the following saturation gradients show a change of the Hex color EA488A by changing the saturation by 10% instead.



 EA488A

 EA488A

FFFFFF

 CB2671

 FF83BF

 AD0058

 FFA0DB

 8F0041

 FFBDF8

 72002B

 FFDAFF

 550017

 FFF8FF

 390002

 100000

 000000

 EA488A

 EA488A

 EA317C

 EA5F98

 EA196E

 EA77A6

 EA0260

 EA8EB4

 EA005F

 EAA6C1

 EABDCF

 EAD4DD

 EAECB

 EAFFF9

 EAFFFF

# Harmonies

## Analogous

The Analogous color harmony consists of three colors that are next to each other on the color wheel.



CA5BC2



EA488A



E95251

# Triad

The Triadic color harmony groups three colors that are evenly spaced from another and form a triangle on the color wheel.



EA488A



699306



009BEA

# Complementary

The Complementary color scheme is a pair of colors which are on the opposite of each other on the color wheel.



EA488A



48EAA8

# Split Complementary

Split-complementary colors differ from the complementary color scheme. The scheme consists of three colors, the original color and two neighbors of the complement color.



00A0BE



EA488A



009C47

# Square

The Square scheme is like the rectangle color scheme, but the four colors are evenly spaced on the color wheel.



EA488A



A28300



00A083



008EFB

# Rectangle

The Rectangle color scheme consists of four colors that form a rectangle on the color wheel.



EA488A



D9632E



00A083



009DDE



# Sweetspot

The Sweet Spot groups the original color and five complimentary colors.



EA488A



FFC9DF



A648EA



80606D



000000



808080



# Same Dimension

The Same Dimension uses a secret algorithm to generate beautiful new colors.



EA488A



FF2B82



EA5648



756A6E



B5004A



360016



# Inverse Universe

The Inverse Universe completely reimagines the original color for something new.



EA488A



FF2B82



48DDEA



756A6E



B5004A



360016



# Previews

## White Background



This preview shows how the Hex color EA488A looks on a white background.

## Color Contrast Check

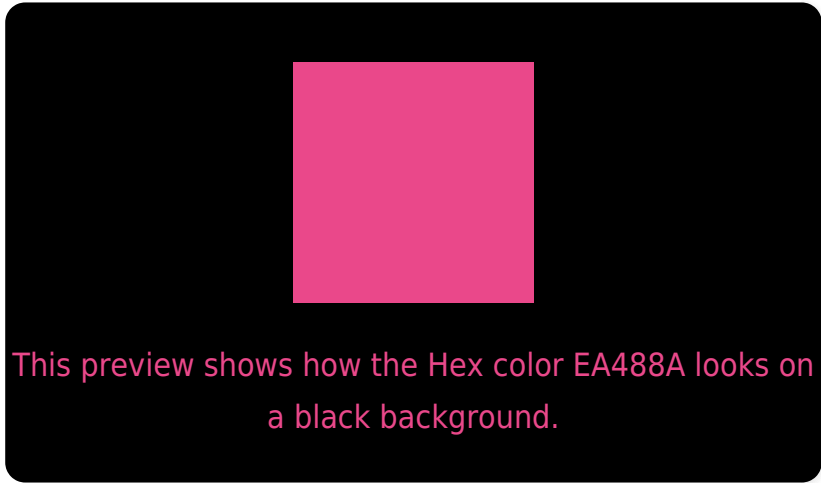
Large Text (above 18pt) WCAG AA ✓ Pass

Any Text WCAG AA × Fail

Large Text (above 18pt) WCAG AAA × Fail

Any Text WCAG AAA × Fail

# Black Background



## Color Contrast Check

Large Text (above 18pt) WCAG AA ✓ Pass

Any Text WCAG AA ✓ Pass

Large Text (above 18pt) WCAG AAA ✓ Pass

Any Text WCAG AAA × Fail

If you want to check with other color combinations, try the [Color Contrast Checker](#).



## Hex EA488A Background



This preview shows how black text looks on a background with the Hex color EA488A.



This preview shows how white text looks on a background with the Hex color EA488A.

# Color Blindness Simulation

Color vision deficiency is a very complex topic, and I could not describe the different causes any better than Wikipedia does, so if you want to learn more, you should check out their [article about color blindness](#).

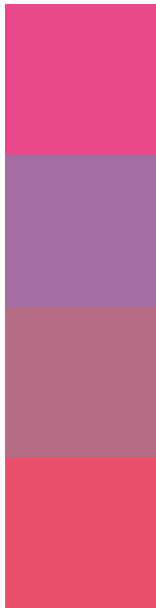
## Dichromacy





**Tritanopia**  
E75459

# Trichromacy



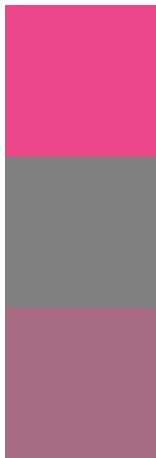
**Original Color**  
EA488A

**Protanomaly**  
A36FA2

**Deuteranomaly**  
B56D85

**Tritanomaly**  
E8506B

# Monochromacy



**Original Color**  
EA488A

**Achromatopsia**  
808080

**Achromatomaly**  
A76C84

# CSS Examples

## Text

The CSS property to change the color of the text to Hex EA488A is called "color". The color property can be set on classes, ids or directly on the HTML element.

This example shows how text in the color #EA488A looks like.

```
.text, #text, p{  
    color:#EA488A  
}
```

If you want to add a text shadow in that color use the text-shadow property, you can generate a text shadow directly with our [CSS Text Shadow Generator](#).

Here you see how black text with a 4 pixel #EA488A colored shadow looks like.

```
.shadow{ text-shadow: 4px 4px 2px #EA488A
}
```

## Border

The CSS property to change the border of an element to Hex EA488A is called "border". The border property can be set on classes, ids or directly on the HTML element.

This example shows the color as border, it can be applied via the CSS property "border" or "border-color".

```
.border, #border, table{ border:4px solid
#EA488A }
```

If only the border color should be changed use the property `border-color`.

```
.border{ border-color:#EA488A }
```

If you want to add a box shadow in that color use:

Here you see how a box with a 4 pixel #EA488A colored shadow looks like.

```
.boxshadow{ -moz-box-shadow:4px 4px 4px  
4px #EA488A; -webkit-box-shadow:4px 4px  
4px 4px #EA488A; box-shadow:4px 4px 4px  
4px #EA488A }
```

# Background

The CSS property to change the background color of an element to Hex EA488A is called "background". The background property can be set on classes, ids or directly on the HTML element.

```
.background, #background, body{  
background:#EA488A }
```

If only the background color should be changed can be used:

```
.background{ background-color:#EA488A }
```

This example shows the color as background, it is applied via the CSS property "background".

To optimize and compress your CSS code, you can use our [online CSS compressor and optimizer](#) based on csstidy. If you want to create a linear or radial gradient as background or border, check our [CSS Gradient Generator](#).



Hey! You found this booklet interesting? Support Converting Colors with the new Membership Option!

The pro membership hides all ads, plus gives you double the colors in the color bucket, and more awesome pro features!

**[Learn more, Memberships starting at \\$2.50/m!](#)**

**Follow me  
on Twitter!**

@ConvertingColor