

Converting Colors

Hex(EA6D7C)

Have a look what the booklet for
Hex(EA6D7C) contains.

Hex(EA6D7C)	3
<i>Conversions</i>	4
<i>Details</i>	6
<i>Harmonies</i>	11
<i>Previews</i>	23
<i>Color Blindness Simulation</i>	26
<i>CSS Examples</i>	29

Color

Hex(EA6D7C)

Conversions

Conversions Part 1

Format	Color
Hex	EA6D7C
RGB	234, 109, 124
RGB Percent	92%, 43%, 49%
CMY	0.0824, 0.5725, 0.5137
CMYK	0.00, 0.53, 0.47, 0.08
HSL	353°, 75%, 67%
HSV	353°, 53%, 92%
XYZ	43.0384, 29.8849, 22.5688
YIQ	148.0850, 69.6850, 31.1650

Conversions

Conversions Part 2

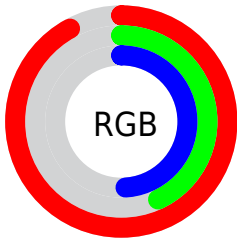
Format	Color
RYB	234, 109, 124
Decimal	15363452
CIELab	61.55, 49.66, 15.35
CIElCh	62, 51.982, 17.179
Yxy	29.8849, 0.4507, 0.3130
Android (android.graphics.Color)	4293553532 (0xFFEA6D7C)
YUV	148.0850, -11.8739, 75.3475
Hunter-Lab	54.6671, 44.8623, 13.7897

Details

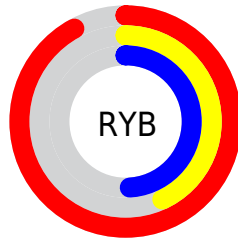
The Hex color **EA6D7C** is a light color, and the websafe version is hex **CC6666**. A complement of this color would be **6DEADB**, and the grayscale version is **949494**.

A 20% lighter version of the original color is **FFA4B0**, and **AE374B** is the 20% darker color. If you saturate the color by 10%, you get **EA5667**, and if you desaturate by 10%, it is **EA8491**.

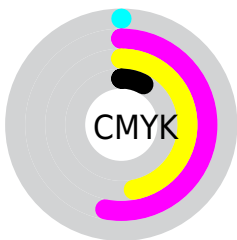
Distribution



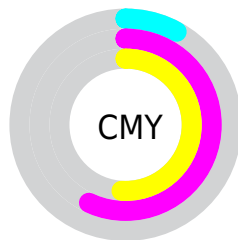
- Red (92%)
- Green (43%)
- Blue (49%)



- Red (92%)
- Yellow (43%)
- Blue (49%)



- Cyan (0%)
- Magenta (53%)
- Yellow (47%)
- Black (8%)



- Cyan (8%)
- Magenta (57%)
- Yellow (51%)

Brightness & Saturation Gradients

These gradients show how the Hex color EA6D7C changes by changing the brightness by 10 percent. The first figure shows a shift by +10% for each color and the second figure -10%.

Similar to the brightness gradients but the following saturation gradients show a change of the Hex color EA6D7C by changing the saturation by 10% instead.

 EA6D7C

 EA6D7C

FFFFFF

 CC5263

 FFA4B0

 AE374B

 FFC0CC

 901835

 FFDDE8

 730020

 FFFAFF

 570009

 3C0002

 1A0001

 000000

 EA6D7C

 EA6D7C

 EA5667

 EA8491

 EA3E53

 EA9CA5

 EA273E

 EAB3BA

 EA0F2A

 EACBCE

 EA001C

 EAE2E3

 EAF9F8

 EAFFFF

Harmonies

Analogous

The Analogous color harmony consists of three colors that are next to each other on the color wheel.



DF6FAA



EA6D7C



DD7A53

Triad

The Triadic color harmony groups three colors that are evenly spaced from another and form a triangle on the color wheel.



EA6D7C



60A553



009FEE

Complementary

The Complementary color scheme is a pair of colors which are on the opposite of each other on the color wheel.



EA6D7C



6DEADB

Split Complementary

Split-complementary colors differ from the complementary color scheme. The scheme consists of three colors, the original color and two neighbors of the complement color.



00A8D7



EA6D7C



00AA7F

Square

The Square scheme is like the rectangle color scheme, but the four colors are evenly spaced on the color wheel.



EA6D7C



959A37



00ABAE



7490ED

Rectangle

The Rectangle color scheme consists of four colors that form a rectangle on the color wheel.



EA6D7C



CB853E



00ABAE



00A3E9

Sweetspot

The Sweet Spot groups the original color and five complimentary colors.



EA6D7C



FFD6DB



D96DEA



80676A



000000



808080

Same Dimension

The Same Dimension uses a secret algorithm to generate beautiful new colors.



EA6D7C



FF5C6F



EA9B6D



756A6B



B50016



360006

Inverse Universe

The Inverse Universe completely reimagines the original color for something new.



EA6D7C



FF5C6F



6DBCEA



756A6B



B50016



360006

Previews

White Background



This preview shows how the Hex color EA6D7C looks on a white background.

Color Contrast Check

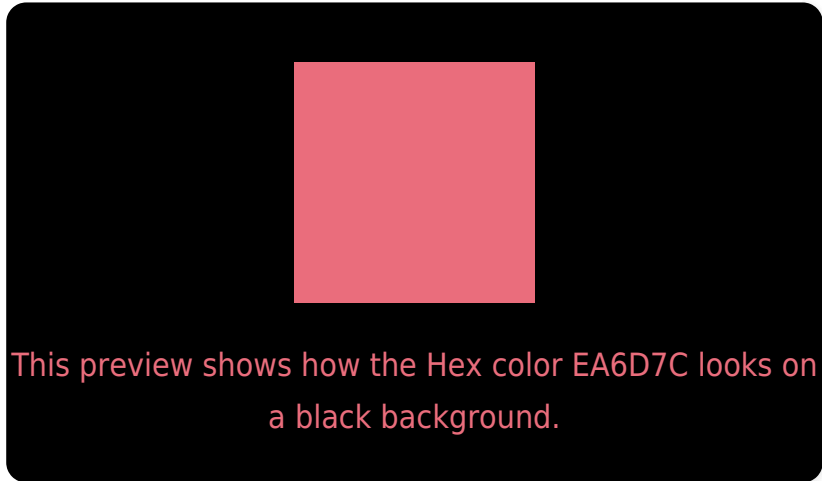
Large Text (above 18pt) WCAG AA ✓ Pass

Any Text WCAG AA × Fail

Large Text (above 18pt) WCAG AAA × Fail

Any Text WCAG AAA × Fail

Black Background



Color Contrast Check

Large Text (above 18pt) WCAG AA ✓ Pass

Any Text WCAG AA ✓ Pass

Large Text (above 18pt) WCAG AAA ✓ Pass

Any Text WCAG AAA × Fail

If you want to check with other color combinations, try the [Color Contrast Checker](#).

Hex EA6D7C Background



This preview shows how black text looks on a background with the Hex color EA6D7C.



This preview shows how white text looks on a background with the Hex color EA6D7C.

Color Blindness Simulation

Color vision deficiency is a very complex topic, and I could not describe the different causes any better than Wikipedia does, so if you want to learn more, you should check out their [article about color blindness](#).


Dichromacy



Original Color
EA6D7C

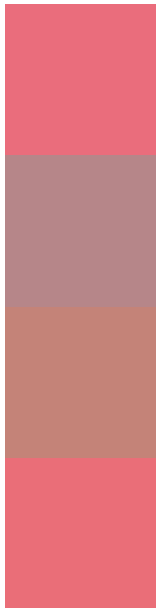
Protanopia
999490

Deuteranopia
AE8F76



Tritanopia
EA6E76

Trichromacy



Original Color
EA6D7C

Protanomaly
B68689

Deuteranomaly
C48378

Tritanomaly
EA6E78

Monochromacy



Original Color
EA6D7C

Achromatopsia
949494

Achromatomaly
B3868B

CSS Examples

Text

The CSS property to change the color of the text to Hex EA6D7C is called "color". The color property can be set on classes, ids or directly on the HTML element.

This example shows how text in the color #EA6D7C looks like.

```
.text, #text, p{  
    color:#EA6D7C  
}
```

If you want to add a text shadow in that color use the text-shadow property, you can generate a text shadow directly with our [CSS Text Shadow Generator](#).

Here you see how black text with a 4 pixel #EA6D7C colored shadow looks like.

```
.shadow{ text-shadow: 4px 4px 2px #EA6D7C
}
```

Border

The CSS property to change the border of an element to Hex EA6D7C is called "border". The border property can be set on classes, ids or directly on the HTML element.

This example shows the color as border, it can be applied via the CSS property "border" or "border-color".

```
.border, #border, table{ border:4px solid
#EA6D7C }
```

If only the border color should be changed use the property `border-color`.

```
.border{ border-color:#EA6D7C }
```

If you want to add a box shadow in that color use:

Here you see how a box with a 4 pixel #EA6D7C colored shadow looks like.

```
.boxshadow{ -moz-box-shadow:4px 4px 4px  
4px #EA6D7C; -webkit-box-shadow:4px 4px  
4px 4px #EA6D7C; box-shadow:4px 4px 4px  
4px #EA6D7C }
```

Background

The CSS property to change the background color of an element to Hex EA6D7C is called "background". The background property can be set on classes, ids or directly on the HTML element.

```
.background, #background, body{  
background:#EA6D7C }
```

If only the background color should be changed can be used:

```
.background{ background-color:#EA6D7C }
```

This example shows the color as background, it is applied via the CSS property "background".

To optimize and compress your CSS code, you can use our [online CSS compressor and optimizer](#) based on csstidy. If you want to create a linear or radial gradient as background or border, check our [CSS Gradient Generator](#).

Hey! You found this booklet interesting? Support Converting Colors with the new Membership Option!

The pro membership hides all ads, plus gives you double the colors in the color bucket, and more awesome pro features!

[Learn more, Memberships starting at \\$2.50/m!](#)

**Follow me
on Twitter!**

@ConvertingColor