

# Converting Colors

Hex(EA889B)

Have a look what the booklet for  
Hex(EA889B) contains.

<b>Hex(EA889B)</b> .....	3
<b><i>Conversions</i></b> .....	4
<b><i>Details</i></b> .....	6
<b><i>Harmonies</i></b> .....	11
<b><i>Previews</i></b> .....	23
<b><i>Color Blindness Simulation</i></b> .....	26
<b><i>CSS Examples</i></b> .....	29

# **Color**

**Hex(EA889B)**

# Conversions

## Conversions Part 1

Format	Color
Hex	EA889B
RGB	234, 136, 155
RGB Percent	92%, 53%, 61%
CMY	0.0824, 0.4667, 0.3922
CMYK	0.00, 0.42, 0.34, 0.08
HSL	348°, 70%, 73%
HSV	348°, 42%, 92%
XYZ	48.6522, 37.4673, 35.6780
YIQ	167.4680, 52.3090, 26.6850

# Conversions

## Conversions Part 2

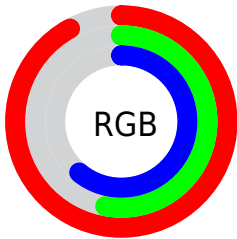
Format	Color
<a href="#">RYB</a>	<a href="#">234, 136, 155</a>
Decimal	<a href="#">15370395</a>
CIELab	<a href="#">67.63, 39.51, 6.30</a>
CIElCh	<a href="#">68, 40.009, 9.060</a>
Yxy	<a href="#">37.4673, 0.3995, 0.3076</a>
Android (android.graphics.Color)	<a href="#">4293560475</a> (0xFFEA889B)
YUV	<a href="#">167.4680, -6.1467, 58.3486</a>
Hunter-Lab	<a href="#">61.2105, 34.7595, 8.2888</a>

# Details

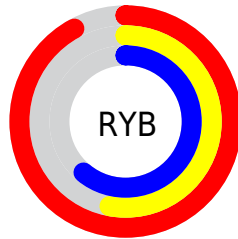
The Hex color **EA889B** is a light color, and the websafe version is hex **FF9999**. A complement of this color would be **88EAD7**, and the grayscale version is **A7A7A7**.

A 20% lighter version of the original color is **FFBFD1**, and **B05468** is the 20% darker color. If you saturate the color by 10%, you get **EA7188**, and if you desaturate by 10%, it is **EA9FAE**.

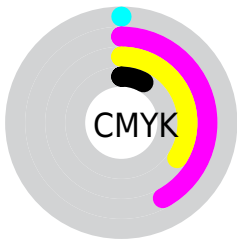
# Distribution



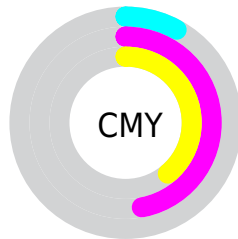
- Red (92%)
- Green (53%)
- Blue (61%)



- Red (92%)
- Yellow (53%)
- Blue (61%)



- Cyan (0%)
- Magenta (42%)
- Yellow (34%)
- Black (8%)



- Cyan (8%)
- Magenta (47%)
- Yellow (39%)

# Brightness & Saturation Gradients

These gradients show how the Hex color EA889B changes by changing the brightness by 10 percent. The first figure shows a shift by +10% for each color and the second figure -10%.

Similar to the brightness gradients but the following saturation gradients show a change of the Hex color EA889B by changing the saturation by 10% instead.



 EA889B

 EA889B

FFFFFF

 CD6E81

 FFBFD1

 B05468

 FFD8E8

 933A50

 FFF8FF

 782039

 5C0124

 42000E

 2A0001

 000000

 EA889B

 EA889B

 EA7188

 EA9FAE

 EA5975

 EAB7C1

 EA4262

 EACED4

 EA2A50

 EAE6E6

 EA133D

 EAFDF9

 EA002D

 EAFFFF

# Harmonies

## Analogous

The Analogous color harmony consists of three colors that are next to each other on the color wheel.



DB8CBF



EA889B



E68E79

# Triad

The Triadic color harmony groups three colors that are evenly spaced from another and form a triangle on the color wheel.



EA889B



8AB06B



38AFE7

# Complementary

The Complementary color scheme is a pair of colors which are on the opposite of each other on the color wheel.



EA889B



88EAD7

# Split Complementary

Split-complementary colors differ from the complementary color scheme. The scheme consists of three colors, the original color and two neighbors of the complement color.



00B6D1



EA889B



5CB68A

# Square

The Square scheme is like the rectangle color scheme, but the four colors are evenly spaced on the color wheel.



EA889B



B1A65C



15B8AF



81A5EC

# Rectangle

The Rectangle color scheme consists of four colors that form a rectangle on the color wheel.



EA889B



D99568



15B8AF



11B2E2



# Sweetspot

The Sweet Spot groups the original color and five complimentary colors.



EA889B



FFDEE4



D688EA



806B6F



000000



808080



# Same Dimension

The Same Dimension uses a secret algorithm to generate beautiful new colors.



EA889B



FF8098



EAA588



756A6C



B50023



36000A



# Inverse Universe

The Inverse Universe completely reimagines the original color for something new.



EA889B



FF8098



88CDEA



756A6C



B50023



36000A



# Previews

## White Background



This preview shows how the Hex color EA889B looks on a white background.

## Color Contrast Check

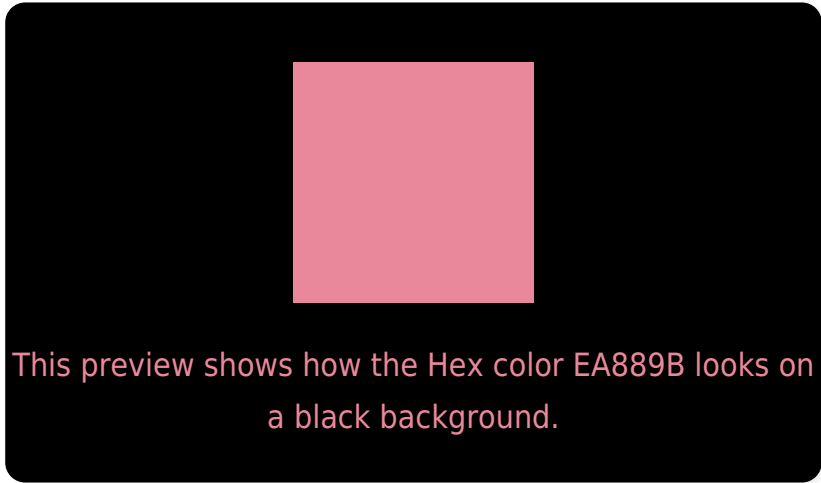
Large Text (above 18pt) WCAG AA × Fail

Any Text WCAG AA × Fail

Large Text (above 18pt) WCAG AAA × Fail

Any Text WCAG AAA × Fail

# Black Background



## Color Contrast Check

Large Text (above 18pt) WCAG AA ✓ Pass

Any Text WCAG AA ✓ Pass

Large Text (above 18pt) WCAG AAA ✓ Pass

Any Text WCAG AAA ✓ Pass

If you want to check with other color combinations, try the [Color Contrast Checker](#).



## Hex EA889B Background



This preview shows how black text looks on a background with the Hex color EA889B.



This preview shows how white text looks on a background with the Hex color EA889B.

# Color Blindness Simulation

Color vision deficiency is a very complex topic, and I could not describe the different causes any better than Wikipedia does, so if you want to learn more, you should check out their [article about color blindness](#).

## Dichromacy



**Original Color**  
EA889B

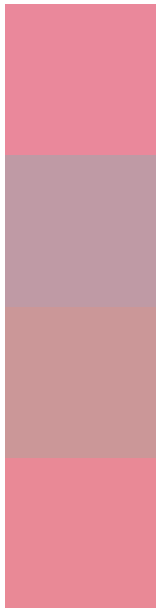
**Protanopia**  
A6A4AB

**Deuteranopia**  
BA9F97



**Tritanopia**  
E98993

# Trichromacy



**Original Color**  
EA889B

**Protanomaly**  
BF9AA5

**Deuteranomaly**  
CB9798

**Tritanomaly**  
E98996

# Monochromacy



**Original Color**  
EA889B

**Achromatopsia**  
A7A7A7

**Achromatomaly**  
BF9CA3

# CSS Examples

## Text

The CSS property to change the color of the text to Hex EA889B is called "color". The color property can be set on classes, ids or directly on the HTML element.

This example shows how text in the color #EA889B looks like.

```
.text, #text, p{  
    color:#EA889B  
}
```

If you want to add a text shadow in that color use the text-shadow property, you can generate a text shadow directly with our [CSS Text Shadow Generator](#).

Here you see how black text with a 4 pixel #EA889B colored shadow looks like.

```
.shadow{ text-shadow: 4px 4px 2px #EA889B
}
```

## Border

The CSS property to change the border of an element to Hex EA889B is called "border". The border property can be set on classes, ids or directly on the HTML element.

This example shows the color as border, it can be applied via the CSS property "border" or "border-color".

```
.border, #border, table{ border:4px solid
#EA889B }
```

If only the border color should be changed use the property `border-color`.

```
.border{ border-color:#EA889B }
```

If you want to add a box shadow in that color use:

Here you see how a box with a 4 pixel #EA889B colored shadow looks like.

```
.boxshadow{ -moz-box-shadow:4px 4px 4px  
4px #EA889B; -webkit-box-shadow:4px 4px  
4px 4px #EA889B; box-shadow:4px 4px 4px  
4px #EA889B }
```

# Background

The CSS property to change the background color of an element to Hex EA889B is called "background". The background property can be set on classes, ids or directly on the HTML element.

```
.background, #background, body{  
background:#EA889B }
```

If only the background color should be changed can be used:

```
.background{ background-color:#EA889B }
```

This example shows the color as background, it is applied via the CSS property "background".

To optimize and compress your CSS code, you can use our [online CSS compressor and optimizer](#) based on csstidy. If you want to create a linear or radial gradient as background or border, check our [CSS Gradient Generator](#).



Hey! You found this booklet interesting? Support Converting Colors with the new Membership Option!

The pro membership hides all ads, plus gives you double the colors in the color bucket, and more awesome pro features!

**[Learn more, Memberships starting at \\$2.50/m!](#)**

**Follow me  
on Twitter!**

@ConvertingColor