

# Converting Colors

Hex(EAA5B7)

Have a look what the booklet for  
Hex(EAA5B7) contains.

<b>Hex(EAA5B7)</b> .....	3
<i><b>Conversions</b></i> .....	4
<i><b>Details</b></i> .....	6
<i><b>Harmonies</b></i> .....	11
<i><b>Previews</b></i> .....	23
<i><b>Color Blindness Simulation</b></i> .....	26
<i><b>CSS Examples</b></i> .....	29

# **Color**

**Hex(EAA5B7)**

# Conversions

## Conversions Part 1

Format	Color
Hex	EAA5B7
RGB	234, 165, 183
RGB Percent	92%, 65%, 72%
CMY	0.0824, 0.3529, 0.2824
CMYK	0.00, 0.29, 0.22, 0.08
HSL	344°, 62%, 78%
HSV	344°, 29%, 92%
XYZ	55.9341, 47.8216, 51.0822
YIQ	187.6830, 35.3460, 20.2260

# Conversions

## Conversions Part 2

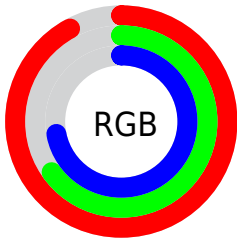
<b>Format</b>	<b>Color</b>
<b>R<sub>YB</sub></b>	234, 165, 183
Decimal	15377847
CIE <sub>Lab</sub>	74.71, 28.00, 0.99
CIE <sub>LCh</sub>	75, 28.018, 2.035
Yxy	47.8216, 0.3612, 0.3088
Android (android.graphics.Color)	4293567927 (0xFFEAA5B7)
YUV	187.6830, -2.3087, 40.6200
Hunter-Lab	69.1532, 23.3605, 4.6108

# Details

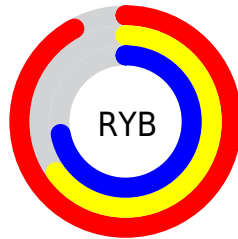
The Hex color **EAA5B7** is a light color, and the websafe version is hex **CC9999**. A complement of this color would be **A5EAD8**, and the grayscale version is **BCBCBC**.

A 20% lighter version of the original color is **FFDDEF**, and **B17082** is the 20% darker color. If you saturate the color by 10%, you get **EA8EA6**, and if you desaturate by 10%, it is **EABCC8**.

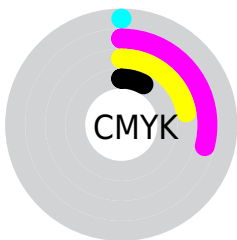
# Distribution



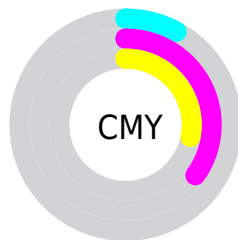
- Red (92%)
- Green (65%)
- Blue (72%)



- Red (92%)
- Yellow (65%)
- Blue (72%)



- Cyan (0%)
- Magenta (29%)
- Yellow (22%)
- Black (8%)



- Cyan (8%)
- Magenta (35%)
- Yellow (28%)

# Brightness & Saturation Gradients

These gradients show how the Hex color EAA5B7 changes by changing the brightness by 10 percent. The first figure shows a shift by +10% for each color and the second figure -10%.

Similar to the brightness gradients but the following saturation gradients show a change of the Hex color EAA5B7 by changing the saturation by 10% instead.



 EAA5B7

 EAA5B7

FFFFFF

 CD8A9C

 FFDDEF

 B17082

 FFF9FF

 965769

 7B3F51

 61283A

 471025

 3000F

 0D0000

 000000

 EAA5B7

 EAA5B7

 EA8EA6

 EABCC8

 EA7694

 EAD4DA

 EA5F83

 EAEBEB

 EA4772

 EAFFFC

 EA3061

 EAFFFF

 EA194F

 EA013E

 EA003D

# Harmonies

## Analogous

The Analogous color harmony consists of three colors that are next to each other on the color wheel.



DBA9D0



EAA5B7



EBA79E

# Triad

The Triadic color harmony groups three colors that are evenly spaced from another and form a triangle on the color wheel.



EAA5B7



ADBF8C



79C1E5

# Complementary

The Complementary color scheme is a pair of colors which are on the opposite of each other on the color wheel.



EAA5B7



A5EAD8

# Split Complementary

Split-complementary colors differ from the complementary color scheme. The scheme consists of three colors, the original color and two neighbors of the complement color.



6AC5D2



EAA5B7



8FC49F

# Square

The Square scheme is like the rectangle color scheme, but the four colors are evenly spaced on the color wheel.



EAA5B7



C9B784



75C6B9



9ABAEB

# Rectangle

The Rectangle color scheme consists of four colors that form a rectangle on the color wheel.



EAA5B7



E4AB90



75C6B9



71C3E0



# Sweetspot

The Sweet Spot groups the original color and five complimentary colors.



EAA5B7



FFE8EE



D8A5EA



807175



000000



808080



# Same Dimension

The Same Dimension uses a secret algorithm to generate beautiful new colors.



EAA5B7



FFA6BD



EAB5A5



756A6D



B5002F



36000E



# Inverse Universe

The Inverse Universe completely reimagines the original color for something new.



EAA5B7



FFA6BD



A5DAEA



756A6D



B5002F



36000E



# Previews

## White Background



This preview shows how the Hex color EAA5B7 looks on a white background.

## Color Contrast Check

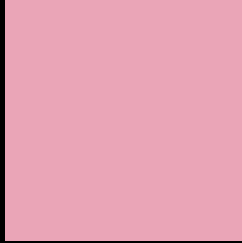
Large Text (above 18pt) WCAG AA × Fail

Any Text WCAG AA × Fail

Large Text (above 18pt) WCAG AAA × Fail

Any Text WCAG AAA × Fail

# Black Background



This preview shows how the Hex color EAA5B7 looks on a black background.

## Color Contrast Check

Large Text (above 18pt) WCAG AA ✓ Pass

Any Text WCAG AA ✓ Pass

Large Text (above 18pt) WCAG AAA ✓ Pass

Any Text WCAG AAA ✓ Pass

If you want to check with other color combinations, try the [Color Contrast Checker](#).



## Hex EAA5B7 Background



This preview shows how black text looks on a background with the Hex color EAA5B7.



This preview shows how white text looks on a background with the Hex color EAA5B7.

# Color Blindness Simulation

Color vision deficiency is a very complex topic, and I could not describe the different causes any better than Wikipedia does, so if you want to learn more, you should check out their [article about color blindness](#).

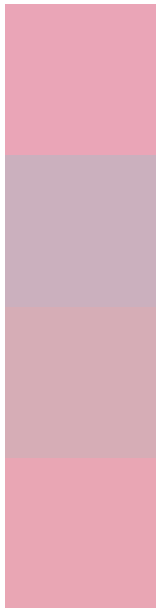
## Dichromacy





**Tritanopia**  
E9A6B2

# Trichromacy



**Original Color**  
EAA5B7

**Protanomaly**  
CBB0BE

**Deuteranomaly**  
D6ADB6

**Tritanomaly**  
E9A6B4

# Monochromacy



**Original Color**  
EAA5B7

**Achromatopsia**  
BCBCBC

**Achromatomaly**  
CDB4BA

# CSS Examples

## Text

The CSS property to change the color of the text to Hex EAA5B7 is called "color". The color property can be set on classes, ids or directly on the HTML element.

This example shows how text in the color #EAA5B7 looks like.

```
.text, #text, p{  
    color:#EAA5B7  
}
```

If you want to add a text shadow in that color use the text-shadow property, you can generate a text shadow directly with our [CSS Text Shadow Generator](#).

Here you see how black text with a 4 pixel #EAA5B7 colored shadow looks like.

```
.shadow{ text-shadow: 4px 4px 2px #EAA5B7
}
```

## Border

The CSS property to change the border of an element to Hex EAA5B7 is called "border". The border property can be set on classes, ids or directly on the HTML element.

This example shows the color as border, it can be applied via the CSS property "border" or "border-color".

```
.border, #border, table{ border:4px solid
#EAA5B7 }
```

If only the border color should be changed use the property `border-color`.

```
.border{ border-color:#EAA5B7 }
```

If you want to add a box shadow in that color use:

Here you see how a box with a 4 pixel #EAA5B7 colored shadow looks like.

```
.boxshadow{ -moz-box-shadow:4px 4px 4px  
4px #EAA5B7; -webkit-box-shadow:4px 4px  
4px 4px #EAA5B7; box-shadow:4px 4px 4px  
4px #EAA5B7 }
```

# Background

The CSS property to change the background color of an element to Hex EAA5B7 is called "background". The background property can be set on classes, ids or directly on the HTML element.

```
.background, #background, body{  
background:#EAA5B7 }
```

If only the background color should be changed can be used:

```
.background{ background-color:#EAA5B7 }
```

This example shows the color as background, it is applied via the CSS property "background".

To optimize and compress your CSS code, you can use our [online CSS compressor and optimizer](#) based on csstidy. If you want to create a linear or radial gradient as background or border, check our [CSS Gradient Generator](#).



Hey! You found this booklet interesting? Support Converting Colors with the new Membership Option!

The pro membership hides all ads, plus gives you double the colors in the color bucket, and more awesome pro features!

**[Learn more, Memberships starting at \\$2.50/m!](#)**

**Follow me  
on Twitter!**

@ConvertingColor