

Converting Colors

Hex(EAB7DB)

Have a look what the booklet for
Hex(EAB7DB) contains.

Hex(EAB7DB)	3
<i>Conversions</i>	4
<i>Details</i>	6
<i>Harmonies</i>	11
<i>Previews</i>	23
<i>Color Blindness Simulation</i>	26
<i>CSS Examples</i>	29

Color

Hex(EAB7DB)

Conversions

Conversions Part 1

Format	Color
Hex	EAB7DB
RGB	234, 183, 219
RGB Percent	92%, 72%, 86%
CMY	0.0824, 0.2824, 0.1412
CMYK	0.00, 0.22, 0.06, 0.08
HSL	318°, 55%, 82%
HSV	318°, 22%, 92%
XYZ	63.6514, 56.4739, 74.5636
YIQ	202.3530, 18.8400, 22.0080

Conversions

Conversions Part 2

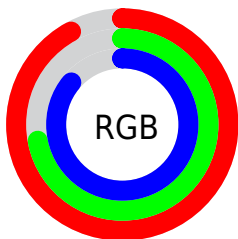
Format	Color
R _Y B	234, 183, 219
Decimal	15382491
CIE Lab	79.88, 24.16, -10.97
CIE LCh	80, 26.535, 335.577
Yxy	56.4739, 0.3269, 0.2901
Android (android.graphics.Color)	4293572571 (0xFFEAB7DB)
YUV	202.3530, 8.2070, 27.7544
Hunter-Lab	75.1491, 19.6787, -6.2237

Details

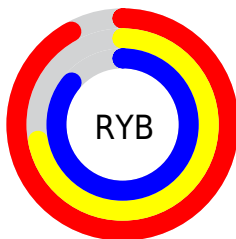
The Hex color **EAB7DB** is a light color, and the websafe version is hex **FFCCFF**. A complement of this color would be **B7EAC6**, and the grayscale version is **CACACA**.

A 20% lighter version of the original color is **FFEFFF**, and **B282A4** is the 20% darker color. If you saturate the color by 10%, you get **EAA0D4**, and if you desaturate by 10%, it is **EACEE2**.

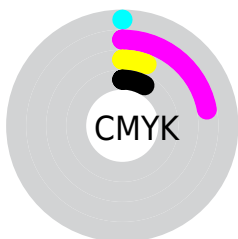
Distribution



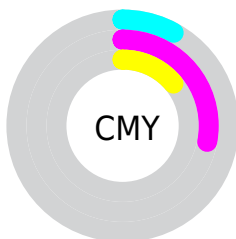
- Red (92%)
- Green (72%)
- Blue (86%)



- Red (92%)
- Yellow (72%)
- Blue (86%)



- Cyan (0%)
- Magenta (22%)
- Yellow (6%)
- Black (8%)



- Cyan (8%)
- Magenta (28%)
- Yellow (14%)

Brightness & Saturation Gradients

These gradients show how the Hex color EAB7DB changes by changing the brightness by 10 percent. The first figure shows a shift by +10% for each color and the second figure -10%.

Similar to the brightness gradients but the following saturation gradients show a change of the Hex color EAB7DB by changing the saturation by 10% instead.

 EAB7DB

 EAB7DB

FFFFFF

 CE9CBF

 FFEFFF

 B282A4

 97688A

 7C5070

 633858

 4A2140

 330B2A

 210016

 000000

 EAB7DB

 EAB7DB

 EAA0D4

 EACEE2

 EA88CD

 EAE6E9

 EA71C6

 EAFDF0

 EA59BF

 EAFFF7

 EA42B9

 EAFFFD

 EA2BB2

 EAFFFF

 EA13AB

 EA00A5

Harmonies

Analogous

The Analogous color harmony consists of three colors that are next to each other on the color wheel.



D0BEEE



EAB7DB



F7B4C2

Triad

The Triadic color harmony groups three colors that are evenly spaced from another and form a triangle on the color wheel.



EAB7DB



D4C695



7FD3E2

Complementary

The Complementary color scheme is a pair of colors which are on the opposite of each other on the color wheel.



EAB7DB



B7EAC6

Split Complementary

Split-complementary colors differ from the complementary color scheme. The scheme consists of three colors, the original color and two neighbors of the complement color.



86D4CA



EAB7DB



B8CD9D

Square

The Square scheme is like the rectangle color scheme, but the four colors are evenly spaced on the color wheel.



EAB7DB



EABE9A



9CD2B1



8FCEF2

Rectangle

The Rectangle color scheme consists of four colors that form a rectangle on the color wheel.



EAB7DB



F9B5B2



9CD2B1



7FD4DA

Sweetspot

The Sweet Spot groups the original color and five complimentary colors.



EAB7DB



FFEDFA



C5B7EA



80757D



000000



808080

Same Dimension

The Same Dimension uses a secret algorithm to generate beautiful new colors.



EAB7DB



FFBDEC



EAB7C2



756A72



B50080



360026

Inverse Universe

The Inverse Universe completely reimagines the original color for something new.



EAB7DB



FFBDEC



B7EADF



756A72



B50080



360026

Previews

White Background



This preview shows how the Hex color EAB7DB looks on a white background.

Color Contrast Check

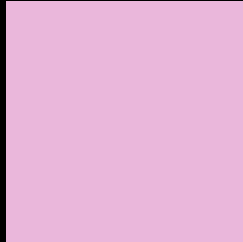
Large Text (above 18pt) WCAG AA × Fail

Any Text WCAG AA × Fail

Large Text (above 18pt) WCAG AAA × Fail

Any Text WCAG AAA × Fail

Black Background



This preview shows how the Hex color EAB7DB looks on a black background.

Color Contrast Check

Large Text (above 18pt) WCAG AA ✓ Pass

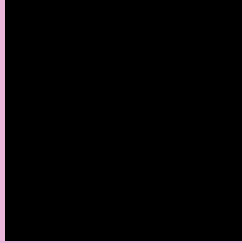
Any Text WCAG AA ✓ Pass

Large Text (above 18pt) WCAG AAA ✓ Pass

Any Text WCAG AAA ✓ Pass

If you want to check with other color combinations, try the [Color Contrast Checker](#).

Hex EAB7DB Background



This preview shows how black text looks on a background with the Hex color EAB7DB.

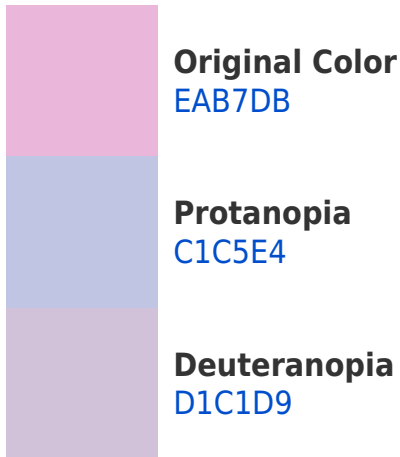



This preview shows how white text looks on a background with the Hex color EAB7DB.

Color Blindness Simulation

Color vision deficiency is a very complex topic, and I could not describe the different causes any better than Wikipedia does, so if you want to learn more, you should check out their [article about color blindness](#).

Dichromacy





Tritanopia
E8BAC9

Trichromacy



Original Color
EAB7DB



Protanomaly
D0C0E1



Deuteranomaly
DABDDA

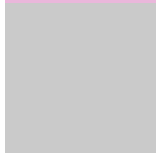


Tritanomaly
E9B9D0

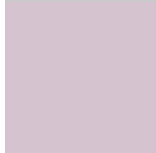
Monochromacy



Original Color
EAB7DB



Achromatopsia
CACACA



Achromatomaly
D6C3D0

CSS Examples

Text

The CSS property to change the color of the text to Hex EAB7DB is called "color". The color property can be set on classes, ids or directly on the HTML element.

This example shows how text in the color #EAB7DB looks like.

```
.text, #text, p{  
  color:#EAB7DB  
}
```

If you want to add a text shadow in that color use the text-shadow property, you can generate a text shadow directly with our [CSS Text Shadow Generator](#).

Here you see how black text with a 4 pixel #EAB7DB colored shadow looks like.

```
.shadow{ text-shadow: 4px 4px 2px #EAB7DB  
}
```

Border

The CSS property to change the border of an element to Hex EAB7DB is called "border". The border property can be set on classes, ids or directly on the HTML element.

This example shows the color as border, it can be applied via the CSS property "border" or "border-color".

```
.border, #border, table{ border:4px solid  
#EAB7DB }
```

If only the border color should be changed use the property `border-color`.

```
.border{ border-color:#EAB7DB }
```

If you want to add a box shadow in that color use:

Here you see how a box with a 4 pixel #EAB7DB colored shadow looks like.

```
.boxshadow{ -moz-box-shadow:4px 4px 4px  
4px #EAB7DB; -webkit-box-shadow:4px 4px  
4px 4px #EAB7DB; box-shadow:4px 4px 4px  
4px #EAB7DB }
```

Background

The CSS property to change the background color of an element to Hex EAB7DB is called "background". The background property can be set on classes, ids or directly on the HTML element.

```
.background, #background, body{  
background:#EAB7DB }
```

If only the background color should be changed can be used:

```
.background{ background-color:#EAB7DB }
```

This example shows the color as background, it is applied via the CSS property "background".

To optimize and compress your CSS code, you can use our [online CSS compressor and optimizer](#) based on csstidy. If you want to create a linear or radial gradient as background or border, check our [CSS Gradient Generator](#).

Hey! You found this booklet interesting? Support Converting Colors with the new Membership Option!

The pro membership hides all ads, plus gives you double the colors in the color bucket, and more awesome pro features!

[Learn more, Memberships starting at \\$2.50/m!](#)

**Follow me
on Twitter!**

@ConvertingColor