

Converting Colors

Hex(EABBE6)

Have a look what the booklet for
Hex(EABBE6) contains.

Hex(EABBE6)	3
<i>Conversions</i>	4
<i>Details</i>	6
<i>Harmonies</i>	11
<i>Previews</i>	23
<i>Color Blindness Simulation</i>	26
<i>CSS Examples</i>	29

Color

Hex(EABBE6)

Conversions

Conversions Part 1

Format	Color
Hex	EABBE6
RGB	234, 187, 230
RGB Percent	92%, 73%, 90%
CMY	0.0824, 0.2667, 0.0980
CMYK	0.00, 0.20, 0.02, 0.08
HSL	305°, 53%, 83%
HSV	305°, 20%, 92%
XYZ	65.9849, 58.7462, 82.7243
YIQ	205.9550, 14.2090, 23.3370

Conversions

Conversions Part 2

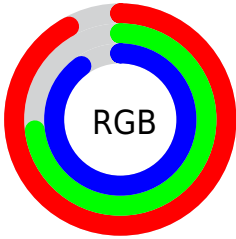
Format	Color
R_{YB}	234, 187, 230
Decimal	15383526
CIE _{Lab}	81.15, 23.97, -14.99
CIE _{LCh}	81, 28.274, 327.976
Yxy	58.7462, 0.3181, 0.2832
Android (android.graphics.Color)	4293573606 (0xFFEABBE6)
YUV	205.9550, 11.8542, 24.5955
Hunter-Lab	76.6461, 19.5407, -10.3395

Details

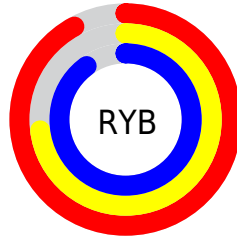
The Hex color **EABBE6** is a light color, and the websafe version is hex **FFCCFF**. A complement of this color would be **BBEABF**, and the grayscale version is **CECECE**.

A 20% lighter version of the original color is **FFF3FF**, and **B285AE** is the 20% darker color. If you saturate the color by 10%, you get **EAA4E4**, and if you desaturate by 10%, it is **EAD2E8**.

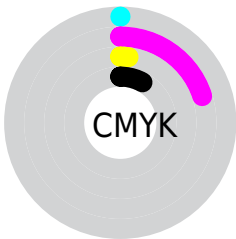
Distribution



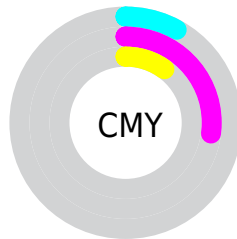
- Red (92%)
- Green (73%)
- Blue (90%)



- Red (92%)
- Yellow (73%)
- Blue (90%)



- Cyan (0%)
- Magenta (20%)
- Yellow (2%)
- Black (8%)



- Cyan (8%)
- Magenta (27%)
- Yellow (10%)

Brightness & Saturation Gradients

These gradients show how the Hex color EABBE6 changes by changing the brightness by 10 percent. The first figure shows a shift by +10% for each color and the second figure -10%.

Similar to the brightness gradients but the following saturation gradients show a change of the Hex color EABBE6 by changing the saturation by 10% instead.

 EABBE6

 EABBE6

FFFFFF

 CEA0CA

 FFF3FF

 B285AE

 976C94

 7D537A

 633C61

 4B2549

 330F33

 21001E

 000000

 EABBE6

 EABBE6

 EAA4E4

 EAD2E8

 EA8CE2

 EAEAEA

 EA75E0

 EAFFEC

 EA5DDE

 EAFFEE

 EA46DC

 EAFFF0

 EA2FDA

 EAFFF2

 EA17D8

 EAFFF4

 EA00D6

 EAFFF6

 EAFFF8

Harmonies

Analogous

The Analogous color harmony consists of three colors that are next to each other on the color wheel.



CBC3F8



EABBE6



FCB7CC

Triad

The Triadic color harmony groups three colors that are evenly spaced from another and form a triangle on the color wheel.



EABBE6



DFC795



7CD8E1

Complementary

The Complementary color scheme is a pair of colors which are on the opposite of each other on the color wheel.



EABBE6



BBEABF

Split Complementary

Split-complementary colors differ from the complementary color scheme. The scheme consists of three colors, the original color and two neighbors of the complement color.



89D8C7



EABBE6



C3CF9A

Square

The Square scheme is like the rectangle color scheme, but the four colors are evenly spaced on the color wheel.



EABBE6



F4BE9E



A4D5AD



87D4F6

Rectangle

The Rectangle color scheme consists of four colors that form a rectangle on the color wheel.



EABBE6



FFB7BA



A4D5AD



7ED8D9

Sweetspot

The Sweet Spot groups the original color and five complimentary colors.



EABBE6



FFF0FE



BFBBEA



80777F



000000



808080

Same Dimension

The Same Dimension uses a secret algorithm to generate beautiful new colors.



EABBE6



FFC2FA



EABBCF



756A74



B500A6



360031

Inverse Universe

The Inverse Universe completely reimagines the original color for something new.



EABBE6



FFC2FA



BBEAD6



756A74



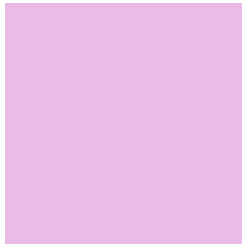
B500A6



360031

Previews

White Background



This preview shows how the Hex color EABBE6 looks on a white background.

Color Contrast Check

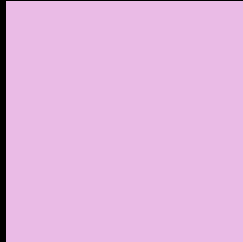
Large Text (above 18pt) WCAG AA × Fail

Any Text WCAG AA × Fail

Large Text (above 18pt) WCAG AAA × Fail

Any Text WCAG AAA × Fail

Black Background



This preview shows how the Hex color EABBE6 looks on a black background.

Color Contrast Check

Large Text (above 18pt) WCAG AA ✓ Pass

Any Text WCAG AA ✓ Pass

Large Text (above 18pt) WCAG AAA ✓ Pass

Any Text WCAG AAA ✓ Pass

If you want to check with other color combinations, try the [Color Contrast Checker](#).

Hex EABBE6 Background



This preview shows how black text looks on a background with the Hex color EABBE6.



This preview shows how white text looks on a background with the Hex color EABBE6.

Color Blindness Simulation

Color vision deficiency is a very complex topic, and I could not describe the different causes any better than Wikipedia does, so if you want to learn more, you should check out their [article about color blindness](#).

Dichromacy



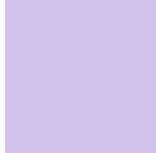


Tritanopia
E7BFCE

Trichromacy



Original Color
EABBE6



Protanomaly
D1C3EC



Deuteranomaly
DAC1E5

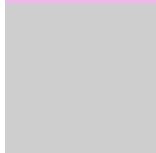


Tritanomaly
E8BED7

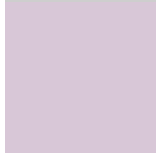
Monochromacy



Original Color
EABBE6



Achromatopsia
CECECE



Achromatomaly
D8C7D7

CSS Examples

Text

The CSS property to change the color of the text to Hex EABBE6 is called "color". The color property can be set on classes, ids or directly on the HTML element.

This example shows how text in the color #EABBE6 looks like.

```
.text, #text, p{  
    color:#EABBE6  
}
```

If you want to add a text shadow in that color use the text-shadow property, you can generate a text shadow directly with our [CSS Text Shadow Generator](#).

Here you see how black text with a 4 pixel #EABBE6 colored shadow looks like.

```
.shadow{ text-shadow: 4px 4px 2px #EABBE6
}
```

Border

The CSS property to change the border of an element to Hex EABBE6 is called "border". The border property can be set on classes, ids or directly on the HTML element.

This example shows the color as border, it can be applied via the CSS property "border" or "border-color".

```
.border, #border, table{ border:4px solid
#EABBE6 }
```

If only the border color should be changed use the property `border-color`.

```
.border{ border-color:#EABBE6 }
```

If you want to add a box shadow in that color use:

Here you see how a box with a 4 pixel #EABBE6 colored shadow looks like.

```
.boxshadow{ -moz-box-shadow:4px 4px 4px  
4px #EABBE6; -webkit-box-shadow:4px 4px  
4px 4px #EABBE6; box-shadow:4px 4px 4px  
4px #EABBE6 }
```

Background

The CSS property to change the background color of an element to Hex EABBE6 is called "background". The background property can be set on classes, ids or directly on the HTML element.

```
.background, #background, body{  
background:#EABBE6 }
```

If only the background color should be changed can be used:

```
.background{ background-color:#EABBE6 }
```

This example shows the color as background, it is applied via the CSS property "background".

To optimize and compress your CSS code, you can use our [online CSS compressor and optimizer](#) based on csstidy. If you want to create a linear or radial gradient as background or border, check our [CSS Gradient Generator](#).

Hey! You found this booklet interesting? Support Converting Colors with the new Membership Option!

The pro membership hides all ads, plus gives you double the colors in the color bucket, and more awesome pro features!

[Learn more, Memberships starting at \\$2.50/m!](#)

**Follow me
on Twitter!**

@ConvertingColor