

Converting Colors

Hex(EABEB6)

Have a look what the booklet for
Hex(EABEB6) contains.

Hex(EABEB6)	3
<i>Conversions</i>	4
<i>Details</i>	6
<i>Harmonies</i>	11
<i>Previews</i>	23
<i>Color Blindness Simulation</i>	26
<i>CSS Examples</i>	29

Color

Hex(EABEB6)

Conversions

Conversions Part 1

Format	Color
Hex	EABEB6
RGB	234, 190, 182
RGB Percent	92%, 75%, 71%
CMY	0.0824, 0.2549, 0.2863
CMYK	0.00, 0.19, 0.22, 0.08
HSL	9°, 55%, 82%
HSV	9°, 22%, 92%
XYZ	60.7886, 57.6967, 52.1886
YIQ	202.2440, 28.7920, 6.8400

Conversions

Conversions Part 2

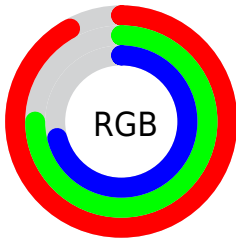
Format	Color
RYB	234, 191, 182
Decimal	15384246
CIELab	80.57, 14.54, 9.98
CIElCh	81, 17.635, 34.467
Yxy	57.6967, 0.3562, 0.3381
Android (android.graphics.Color)	4293574326 (0xFFEABEB6)
YUV	202.2440, -9.9803, 27.8500
Hunter-Lab	75.9584, 9.9244, 12.4345

Details

The Hex color **EABEB6** is a light color, and the websafe version is hex **FFCCCC**. A complement of this color would be **B6E2EA**, and the grayscale version is **CACACA**.

A 20% lighter version of the original color is **FFF6EE**, and **B28981** is the 20% darker color. If you saturate the color by 10%, you get **EAAA9F**, and if you desaturate by 10%, it is **EAD2CD**.

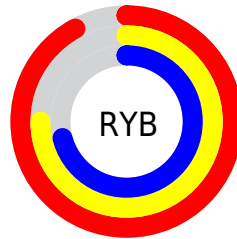
Distribution



Red (92%)

Green (75%)

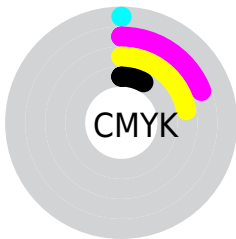
Blue (71%)



Red (92%)

Yellow (75%)

Blue (71%)

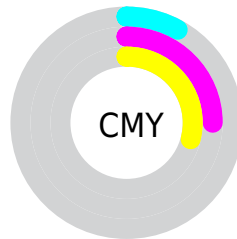


Cyan (0%)

Magenta (19%)

Yellow (22%)

Black (8%)



Cyan (8%)

Magenta (25%)

Yellow (29%)

Brightness & Saturation Gradients

These gradients show how the Hex color EABEB6 changes by changing the brightness by 10 percent. The first figure shows a shift by +10% for each color and the second figure -10%.

Similar to the brightness gradients but the following saturation gradients show a change of the Hex color EABEB6 by changing the saturation by 10% instead.

 EABEB6

 EABEB6

FFFFFF

 CDA39B

 FFF6EE

 B28981

 966F68

 7C5750

 623F39

 492924

 32140E

 1D0000

 000000

 EA8EB6

 EA8EB6

 EAAA9F

 EAD2CD

 EA9687

 EAE6E5

 EA8370

 EAF9FC

 EA6F58

 EAF9FC

 EA5B41

 EA472A

 EA3312

 EA2400

Harmonies

Analogous

The Analogous color harmony consists of three colors that are next to each other on the color wheel.



EABDC6



EABEB6



E2C2AB

Triad

The Triadic color harmony groups three colors that are evenly spaced from another and form a triangle on the color wheel.



EABEB6



AED0B9



B9C9E8

Complementary

The Complementary color scheme is a pair of colors which are on the opposite of each other on the color wheel.



EABEB6



B6E2EA

Split Complementary

Split-complementary colors differ from the complementary color scheme. The scheme consists of three colors, the original color and two neighbors of the complement color.



A6CDE5



EABEB6



A0D2CA

Square

The Square scheme is like the rectangle color scheme, but the four colors are evenly spaced on the color wheel.



EABEB6



C0CDAD



9DD1DA



CEC3E3

Rectangle

The Rectangle color scheme consists of four colors that form a rectangle on the color wheel.



EABEB6



D8C6A7



9DD1DA



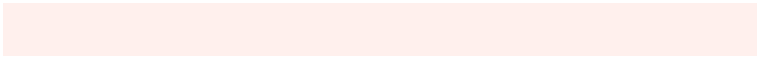
B2CAE8

Sweetspot

The Sweet Spot groups the original color and five complimentary colors.



EABEB6



FFF0ED



EAB6E2



807775



000000



808080

Same Dimension

The Same Dimension uses a secret algorithm to generate beautiful new colors.



EABEB6



FFC5BA



EAD8B6



756B6A



B51C00



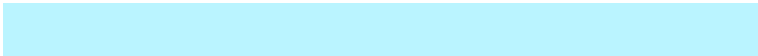
360800

Inverse Universe

The Inverse Universe completely reimagines the original color for something new.



B6E2EA



BAF4FF



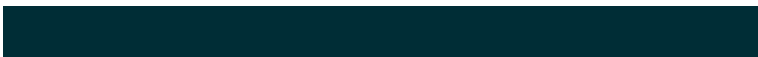
B6C8EA



6A7375



0099B5



002D36

Previews

White Background



This preview shows how the Hex color EABEB6 looks on a white background.

Color Contrast Check

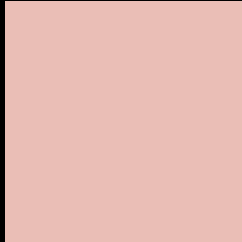
Large Text (above 18pt) WCAG AA × Fail

Any Text WCAG AA × Fail

Large Text (above 18pt) WCAG AAA × Fail

Any Text WCAG AAA × Fail

Black Background



This preview shows how the Hex color EABEB6 looks on a black background.

Color Contrast Check

Large Text (above 18pt) WCAG AA ✓ Pass

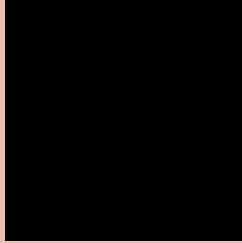
Any Text WCAG AA ✓ Pass

Large Text (above 18pt) WCAG AAA ✓ Pass

Any Text WCAG AAA ✓ Pass

If you want to check with other color combinations, try the [Color Contrast Checker](#).

Hex EABEB6 Background



This preview shows how black text looks on a background with the Hex color EABEB6.

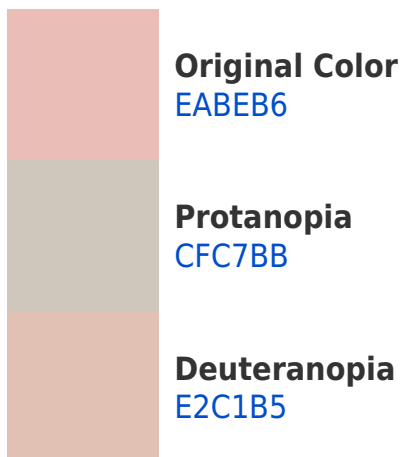


This preview shows how white text looks on a background with the Hex color EABEB6.

Color Blindness Simulation

Color vision deficiency is a very complex topic, and I could not describe the different causes any better than Wikipedia does, so if you want to learn more, you should check out their [article about color blindness](#).

Dichromacy



Trichromacy



Original Color
EABEB6

Protanomaly
D9C4B9

Deuteranomaly
E5C0B5

Tritanomaly
EBBCC3

Monochromacy



Original Color
EABEB6

Achromatopsia
CACACA

Achromatomaly
D6C6C3

CSS Examples

Text

The CSS property to change the color of the text to Hex EABEB6 is called "color". The color property can be set on classes, ids or directly on the HTML element.

This example shows how text in the color #EABEB6 looks like.

```
.text, #text, p{  
    color:#EABEB6  
}
```

If you want to add a text shadow in that color use the text-shadow property, you can generate a text shadow directly with our [CSS Text Shadow Generator](#).

Here you see how black text with a 4 pixel #EABEB6 colored shadow looks like.

```
.shadow{ text-shadow: 4px 4px 2px #EABEB6  
}
```

Border

The CSS property to change the border of an element to Hex EABEB6 is called "border". The border property can be set on classes, ids or directly on the HTML element.

This example shows the color as border, it can be applied via the CSS property "border" or "border-color".

```
.border, #border, table{ border:4px solid  
#EABEB6 }
```

If only the border color should be changed use the property `border-color`.

```
.border{ border-color:#EABEB6 }
```

If you want to add a box shadow in that color use:

Here you see how a box with a 4 pixel #EABEB6 colored shadow looks like.

```
.boxshadow{ -moz-box-shadow:4px 4px 4px  
4px #EABEB6; -webkit-box-shadow:4px 4px  
4px 4px #EABEB6; box-shadow:4px 4px 4px  
4px #EABEB6 }
```

Background

The CSS property to change the background color of an element to Hex EABEB6 is called "background". The background property can be set on classes, ids or directly on the HTML element.

```
.background, #background, body{  
background:#EABEB6 }
```

If only the background color should be changed can be used:

```
.background{ background-color:#EABEB6 }
```

This example shows the color as background, it is applied via the CSS property "background".

To optimize and compress your CSS code, you can use our [online CSS compressor and optimizer](#) based on csstidy. If you want to create a linear or radial gradient as background or border, check our [CSS Gradient Generator](#).

Hey! You found this booklet interesting? Support Converting Colors with the new Membership Option!

The pro membership hides all ads, plus gives you double the colors in the color bucket, and more awesome pro features!

[Learn more, Memberships starting at \\$2.50/m!](#)

**Follow me
on Twitter!**

@ConvertingColor