

Converting Colors

Hex(EABFEE)

Have a look what the booklet for
Hex(EABFEE) contains.

Hex(EABFEE)	3
<i>Conversions</i>	4
<i>Details</i>	6
<i>Harmonies</i>	11
<i>Previews</i>	23
<i>Color Blindness Simulation</i>	26
<i>CSS Examples</i>	29

Color

Hex(EABFEE)

Conversions

Conversions Part 1

Format	Color
Hex	EABFEE
RGB	234, 191, 238
RGB Percent	92%, 75%, 93%
CMY	0.0824, 0.2510, 0.0667
CMYK	0.02, 0.20, 0.00, 0.07
HSL	295°, 58%, 84%
HSV	295°, 20%, 93%
XYZ	67.9951, 60.9271, 89.0653
YIQ	209.2150, 10.5410, 23.7330

Conversions

Conversions Part 2

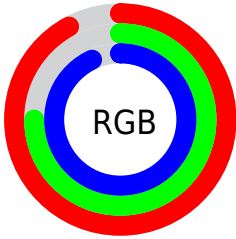
Format	Color
R_{YB}	234, 191, 238
Decimal	15384558
CIE _{Lab}	82.34, 23.30, -17.49
CIE _{LCh}	82, 29.139, 323.104
Yxy	60.9271, 0.3119, 0.2795
Android (android.graphics.Color)	4293574638 (0xFFEABFEE)
YUV	209.2150, 14.1910, 21.7364
Hunter-Lab	78.0558, 18.8953, -13.0136

Details

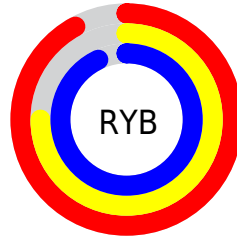
The Hex color **EABFEE** is a light color, and the websafe version is hex **FFCCFF**. A complement of this color would be **C3EEBF**, and the grayscale version is **D1D1D1**.

A 20% lighter version of the original color is **FFF8FF**, and **B289B6** is the 20% darker color. If you saturate the color by 10%, you get **E8A7EE**, and if you desaturate by 10%, it is **ECD7EE**.

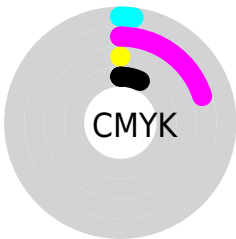
Distribution



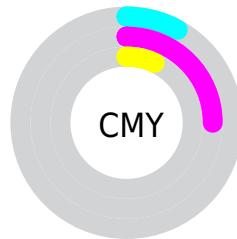
- Red (92%)
- Green (75%)
- Blue (93%)



- Red (92%)
- Yellow (75%)
- Blue (93%)



- Cyan (2%)
- Magenta (20%)
- Yellow (0%)
- Black (7%)



- Cyan (8%)
- Magenta (25%)
- Yellow (7%)

Brightness & Saturation Gradients

These gradients show how the Hex color EABFEE changes by changing the brightness by 10 percent. The first figure shows a shift by +10% for each color and the second figure -10%.

Similar to the brightness gradients but the following saturation gradients show a change of the Hex color EABFEE by changing the saturation by 10% instead.

 EABFEE

FFFFFF

 FFF8FF

 EABFEE

 CEA4D2

 B289B6

 97709B

 7D5781

 633F68

 4B2850

 331339

 200023

 00000A

 EABFEE

 EABFEE

 E8A7EE

 ECD7EE

 E68FEE

 EEEFEE

 E478EE

 F0FFEE

 E260EE

 F2FFEE

 E048EE

 F4FFEE

 DE30EE

 F6FFEE

 DC18EE

 F8FFEE

 DA01EE

 FAFFEE

 DA00EE

 FCFFEE

Harmonies

Analogous

The Analogous color harmony consists of three colors that are next to each other on the color wheel.



C9C8FF



EABFEE



FFBAD4

Triad

The Triadic color harmony groups three colors that are evenly spaced from another and form a triangle on the color wheel.



EABFEE



E7C997



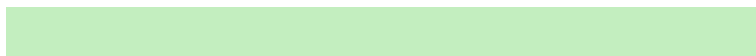
7DDCE1

Complementary

The Complementary color scheme is a pair of colors which are on the opposite of each other on the color wheel.



EABFEE



C3EEBF

Split Complementary

Split-complementary colors differ from the complementary color scheme. The scheme consists of three colors, the original color and two neighbors of the complement color.



8EDCC5



EABFEE



CBD29A

Square

The Square scheme is like the rectangle color scheme, but the four colors are evenly spaced on the color wheel.



EABFEE



FCC0A2



ABD8AB



84D8F8

Rectangle

The Rectangle color scheme consists of four colors that form a rectangle on the color wheel.



EABFEE



FFB9C2



ABD8AB



80DCD8

Sweetspot

The Sweet Spot groups the original color and five complimentary colors.



EABFEE



FEF0FF



BFC4EE



7F7780



000000



808080

Same Dimension

The Same Dimension uses a secret algorithm to generate beautiful new colors.



EABFEE



FAC2FF



EEBFDB



776C78



A800B8



330038

Inverse Universe

The Inverse Universe completely reimagines the original color for something new.



EEBFC3



FFC2C7



BFEED2



786C6D



B80010



380005

Previews

White Background



This preview shows how the Hex color EABFEE looks on a white background.

Color Contrast Check

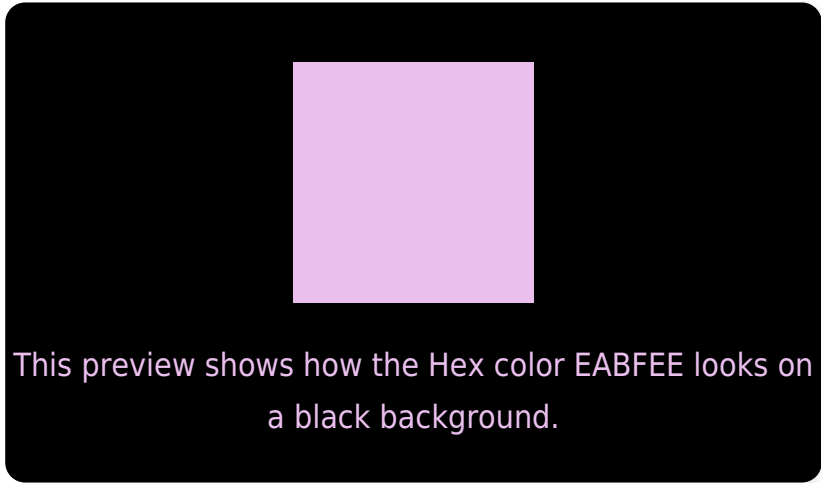
Large Text (above 18pt) WCAG AA × Fail

Any Text WCAG AA × Fail

Large Text (above 18pt) WCAG AAA × Fail

Any Text WCAG AAA × Fail

Black Background



Color Contrast Check

Large Text (above 18pt) WCAG AA ✓ Pass

Any Text WCAG AA ✓ Pass

Large Text (above 18pt) WCAG AAA ✓ Pass

Any Text WCAG AAA ✓ Pass

If you want to check with other color combinations, try the [Color Contrast Checker](#).

Hex EABFEE Background



This preview shows how black text looks on a background with the Hex color EABFEE.



This preview shows how white text looks on a background with the Hex color EABFEE.

Color Blindness Simulation

Color vision deficiency is a very complex topic, and I could not describe the different causes any better than Wikipedia does, so if you want to learn more, you should check out their [article about color blindness](#).

Dichromacy



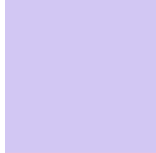


Tritanopia
E6C4D3

Trichromacy



Original Color
EABFEE



Protanomaly
D2C7F3



Deuteranomaly
DBC5ED

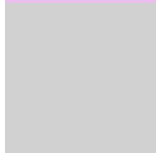


Tritanomaly
E7C2DD

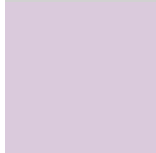
Monochromacy



Original Color
EABFEE



Achromatopsia
D1D1D1



Achromatomaly
DACADC

CSS Examples

Text

The CSS property to change the color of the text to Hex EABFEE is called "color". The color property can be set on classes, ids or directly on the HTML element.

This example shows how text in the color #EABFEE looks like.

```
.text, #text, p{  
    color:#EABFEE  
}
```

If you want to add a text shadow in that color use the text-shadow property, you can generate a text shadow directly with our [CSS Text Shadow Generator](#).

Here you see how black text with a 4 pixel #EABFEE colored shadow looks like.

```
.shadow{ text-shadow: 4px 4px 2px #EABFEE
}
```

Border

The CSS property to change the border of an element to Hex EABFEE is called "border". The border property can be set on classes, ids or directly on the HTML element.

This example shows the color as border, it can be applied via the CSS property "border" or "border-color".

```
.border, #border, table{ border:4px solid
#EABFEE }
```

If only the border color should be changed use the property `border-color`.

```
.border{ border-color:#EABFEE }
```

If you want to add a box shadow in that color use:

Here you see how a box with a 4 pixel #EABFEE colored shadow looks like.

```
.boxshadow{ -moz-box-shadow:4px 4px 4px  
4px #EABFEE; -webkit-box-shadow:4px 4px  
4px 4px #EABFEE; box-shadow:4px 4px 4px  
4px #EABFEE }
```

Background

The CSS property to change the background color of an element to Hex EABFEE is called "background". The background property can be set on classes, ids or directly on the HTML element.

```
.background, #background, body{  
background:#EABFEE }
```

If only the background color should be changed can be used:

```
.background{ background-color:#EABFEE }
```

This example shows the color as background, it is applied via the CSS property "background".

To optimize and compress your CSS code, you can use our [online CSS compressor and optimizer](#) based on csstidy. If you want to create a linear or radial gradient as background or border, check our [CSS Gradient Generator](#).

Hey! You found this booklet interesting? Support Converting Colors with the new Membership Option!

The pro membership hides all ads, plus gives you double the colors in the color bucket, and more awesome pro features!

[Learn more, Memberships starting at \\$2.50/m!](#)

**Follow me
on Twitter!**

@ConvertingColor