

Converting Colors

Hex(EAC7B5)

Have a look what the booklet for
Hex(EAC7B5) contains.

Hex(EAC7B5)	3
<i>Conversions</i>	4
<i>Details</i>	6
<i>Harmonies</i>	11
<i>Previews</i>	23
<i>Color Blindness Simulation</i>	26
<i>CSS Examples</i>	29

Color

Hex(EAC7B5)

Conversions

Conversions Part 1

Format	Color
Hex	EAC7B5
RGB	234, 199, 181
RGB Percent	92%, 78%, 71%
CMY	0.0824, 0.2196, 0.2902
CMYK	0.00, 0.15, 0.23, 0.08
HSL	20°, 56%, 81%
HSV	20°, 23%, 92%
XYZ	62.6956, 61.6755, 52.3162
YIQ	207.4130, 26.6380, 1.8220

Conversions

Conversions Part 2

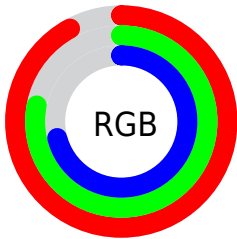
Format	Color
R _Y B	234, 208, 181
Decimal	15386549
CIE Lab	82.74, 9.64, 13.60
CIE LCh	83, 16.667, 54.656
Yxy	61.6755, 0.3548, 0.3491
Android (android.graphics.Color)	4293576629 (0xFFEAC7B5)
YUV	207.4130, -13.0216, 23.3168
Hunter-Lab	78.5337, 5.0673, 15.4769

Details

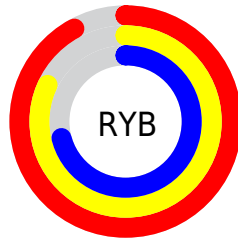
The Hex color **EAC7B5** is a light color, and the websafe version is hex **FFCCCC**. A complement of this color would be **B5D8EA**, and the grayscale version is **D0D0D0**.

A 20% lighter version of the original color is **FFFFED**, and **B29180** is the 20% darker color. If you saturate the color by 10%, you get **EAB89E**, and if you desaturate by 10%, it is **EAD6CC**.

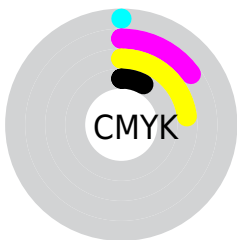
Distribution



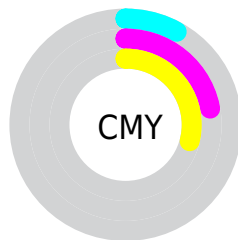
- Red (92%)
- Green (78%)
- Blue (71%)



- Red (92%)
- Yellow (82%)
- Blue (71%)



- Cyan (0%)
- Magenta (15%)
- Yellow (23%)
- Black (8%)



- Cyan (8%)
- Magenta (22%)
- Yellow (29%)

Brightness & Saturation Gradients

These gradients show how the Hex color EAC7B5 changes by changing the brightness by 10 percent. The first figure shows a shift by +10% for each color and the second figure -10%.

Similar to the brightness gradients but the following saturation gradients show a change of the Hex color EAC7B5 by changing the saturation by 10% instead.

 EAC7B5

 EAC7B5

FFFFFF

 CDAC9A

 FFFFED

 B29180

 977767

 7C5F4F

 634738

 4A3022

 321B0D

 1D0200

 000000

 EAC7B5

 EAC7B5

 EAB89E

 EAD6CC

 EAA886

 EAE6E4

 EA996F

 EAF5FB

 EA8957

 EAFFFF

 EA7A40

 EA6A29

 EA5B11

 EA4F00

Harmonies

Analogous

The Analogous color harmony consists of three colors that are next to each other on the color wheel.



EFC4C2



EAC7B5



DDCCAF

Triad

The Triadic color harmony groups three colors that are evenly spaced from another and form a triangle on the color wheel.



EAC7B5



ACD7CA



CDCBEA

Complementary

The Complementary color scheme is a pair of colors which are on the opposite of each other on the color wheel.



EAC7B5



B5D8EA

Split Complementary

Split-complementary colors differ from the complementary color scheme. The scheme consists of three colors, the original color and two neighbors of the complement color.



BAD0ED



EAC7B5



A5D7DA

Square

The Square scheme is like the rectangle color scheme, but the four colors are evenly spaced on the color wheel.



EAC7B5



BBD5BB



AAD4E7



E0C6E0

Rectangle

The Rectangle color scheme consists of four colors that form a rectangle on the color wheel.



EAC7B5



D2CFB0



AAD4E7



C7CDEC

Sweetspot

The Sweet Spot groups the original color and five complimentary colors.



EAC7B5



FFF3ED



EAB5D8



807975



000000



808080

Same Dimension

The Same Dimension uses a secret algorithm to generate beautiful new colors.



EAC7B5



FFD2BA



EAE1B5



756E6A



B53D00



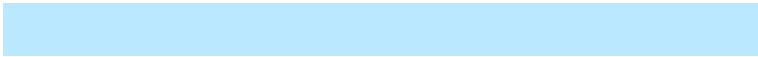
361200

Inverse Universe

The Inverse Universe completely reimagines the original color for something new.



B5D8EA



BAE8FF



B5BEEA



6A7175



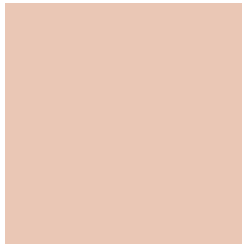
0078B5



002336

Previews

White Background



This preview shows how the Hex color EAC7B5 looks on a white background.

Color Contrast Check

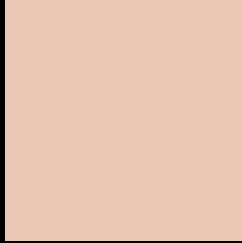
Large Text (above 18pt) WCAG AA × Fail

Any Text WCAG AA × Fail

Large Text (above 18pt) WCAG AAA × Fail

Any Text WCAG AAA × Fail

Black Background



This preview shows how the Hex color EAC7B5 looks on a black background.

Color Contrast Check

Large Text (above 18pt) WCAG AA ✓ Pass

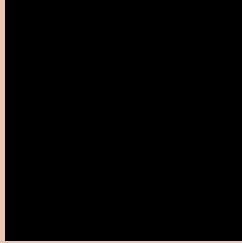
Any Text WCAG AA ✓ Pass

Large Text (above 18pt) WCAG AAA ✓ Pass

Any Text WCAG AAA ✓ Pass

If you want to check with other color combinations, try the [Color Contrast Checker](#).

Hex EAC7B5 Background



This preview shows how black text looks on a background with the Hex color EAC7B5.



This preview shows how white text looks on a background with the Hex color EAC7B5.

Color Blindness Simulation

Color vision deficiency is a very complex topic, and I could not describe the different causes any better than Wikipedia does, so if you want to learn more, you should check out their [article about color blindness](#).

Dichromacy

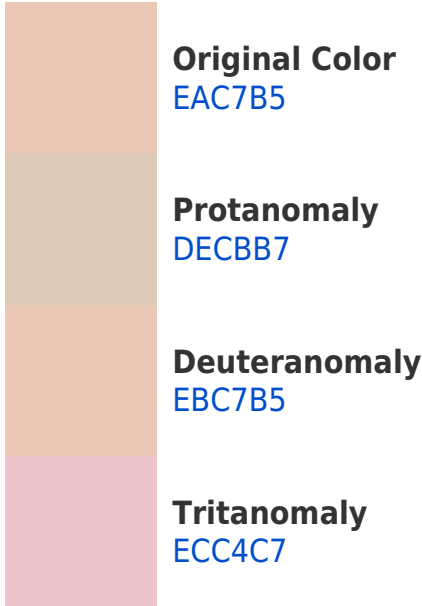


Original Color
EAC7B5

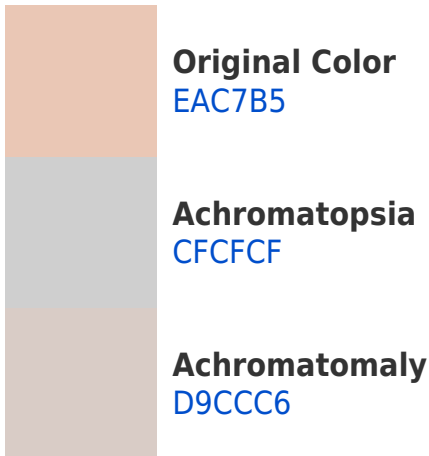
Protanopia
D7CDB8

Deuteranopia
EBC7B5

Trichromacy



Monochromacy



CSS Examples

Text

The CSS property to change the color of the text to Hex EAC7B5 is called "color". The color property can be set on classes, ids or directly on the HTML element.

This example shows how text in the color #EAC7B5 looks like.

```
.text, #text, p{  
    color:#EAC7B5  
}
```

If you want to add a text shadow in that color use the text-shadow property, you can generate a text shadow directly with our [CSS Text Shadow Generator](#).

Here you see how black text with a 4 pixel #EAC7B5 colored shadow looks like.

```
.shadow{ text-shadow: 4px 4px 2px #EAC7B5
}
```

Border

The CSS property to change the border of an element to Hex EAC7B5 is called "border". The border property can be set on classes, ids or directly on the HTML element.

This example shows the color as border, it can be applied via the CSS property "border" or "border-color".

```
.border, #border, table{ border:4px solid
#EAC7B5 }
```

If only the border color should be changed use the property `border-color`.

```
.border{ border-color:#EAC7B5 }
```

If you want to add a box shadow in that color use:

Here you see how a box with a 4 pixel #EAC7B5 colored shadow looks like.

```
.boxshadow{ -moz-box-shadow:4px 4px 4px  
4px #EAC7B5; -webkit-box-shadow:4px 4px  
4px 4px #EAC7B5; box-shadow:4px 4px 4px  
4px #EAC7B5 }
```

Background

The CSS property to change the background color of an element to Hex EAC7B5 is called "background". The background property can be set on classes, ids or directly on the HTML element.

```
.background, #background, body{  
background:#EAC7B5 }
```

If only the background color should be changed can be used:

```
.background{ background-color:#EAC7B5 }
```

This example shows the color as background, it is applied via the CSS property "background".

To optimize and compress your CSS code, you can use our [online CSS compressor and optimizer](#) based on csstidy. If you want to create a linear or radial gradient as background or border, check our [CSS Gradient Generator](#).

Hey! You found this booklet interesting? Support Converting Colors with the new Membership Option!

The pro membership hides all ads, plus gives you double the colors in the color bucket, and more awesome pro features!

[Learn more, Memberships starting at \\$2.50/m!](#)

**Follow me
on Twitter!**

@ConvertingColor