

# Converting Colors

Hex(EACCCD)

Have a look what the booklet for  
Hex(EACCCD) contains.

<b>Hex(EACCCD)</b> .....	3
<i><b>Conversions</b></i> .....	4
<i><b>Details</b></i> .....	6
<i><b>Harmonies</b></i> .....	11
<i><b>Previews</b></i> .....	23
<i><b>Color Blindness Simulation</b></i> .....	26
<i><b>CSS Examples</b></i> .....	29

# **Color**

**Hex(EACCCD)**

# Conversions

## Conversions Part 1

Format	Color
Hex	EACCCD
RGB	234, 204, 205
RGB Percent	92%, 80%, 80%
CMY	0.0824, 0.2000, 0.1961
CMYK	0.00, 0.13, 0.12, 0.08
HSL	358°, 42%, 86%
HSV	358°, 13%, 92%
XYZ	66.5440, 65.0859, 66.8132
YIQ	213.0840, 17.5590, 6.6710

# Conversions

## Conversions Part 2

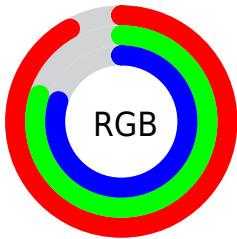
Format	Color
<a href="#">RYB</a>	<a href="#">234, 204, 205</a>
Decimal	<a href="#">15387853</a>
CIELab	<a href="#">84.53, 10.67, 3.37</a>
CIELCh	<a href="#">85, 11.186, 17.536</a>
Yxy	<a href="#">65.0859, 0.3353, 0.3280</a>
Android (android.graphics.Color)	<a href="#">4293577933</a> ( <a href="#">0xFFEACCCD</a> )
YUV	<a href="#">213.0840, -3.9854, 18.3433</a>
Hunter-Lab	<a href="#">80.6759, 6.0497, 7.3710</a>

# Details

The Hex color **EACCCD** is a light color, and the websafe version is hex **FFCCCC**. A complement of this color would be **CCEAE9**, and the grayscale version is **D5D5D5**.

A 20% lighter version of the original color is **FFFFFF**, and **B29697** is the 20% darker color. If you saturate the color by 10%, you get **EAB5B6**, and if you desaturate by 10%, it is **EAE3E4**.

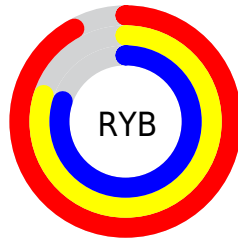
# Distribution



Red (92%)

Green (80%)

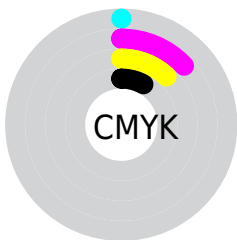
Blue (80%)



Red (92%)

Yellow (80%)

Blue (80%)

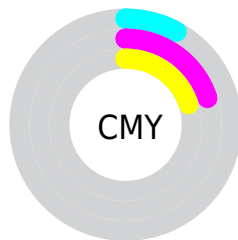


Cyan (0%)

Magenta (13%)

Yellow (12%)

Black (8%)



Cyan (8%)

Magenta (20%)

Yellow (20%)

# Brightness & Saturation Gradients

These gradients show how the Hex color EACCCD changes by changing the brightness by 10 percent. The first figure shows a shift by +10% for each color and the second figure -10%.

Similar to the brightness gradients but the following saturation gradients show a change of the Hex color EACCCD by changing the saturation by 10% instead.



 EACCCD

 EACCCD

FFFFFF

 CEB1B2

 B29697

 977C7D

 7D6364

 644B4C

 4C3436

 341F20

 200809

 000000

 EACCCD

 EACCCD

 EAB5B6

 EAE3E4

 EA9DA0

 EAFBFA

 EA8689

 EAFFFF

 EA6E73

 EA575C

 EA4045

 EA282F

 EA1118

 EA0008

# Harmonies

## Analogous

The Analogous color harmony consists of three colors that are next to each other on the color wheel.



E6CCD8



EACCCD



E8CEC4

# Triad

The Triadic color harmony groups three colors that are evenly spaced from another and form a triangle on the color wheel.



EACCCD



C9D7C4



C3D5E7

# Complementary

The Complementary color scheme is a pair of colors which are on the opposite of each other on the color wheel.



EACCCD



CCEAE9

# Split Complementary

Split-complementary colors differ from the complementary color scheme. The scheme consists of three colors, the original color and two neighbors of the complement color.



BBD8E2



EACCCD



BED9CE

# Square

The Square scheme is like the rectangle color scheme, but the four colors are evenly spaced on the color wheel.



EACCCD



D5D4BF



B9D9D9



D0D2E7

# Rectangle

The Rectangle color scheme consists of four colors that form a rectangle on the color wheel.



EACCCD



E3D0C0



B9D9D9



C0D6E6



# Sweetspot

The Sweet Spot groups the original color and five complimentary colors.



EACCCD



FFF5F5



E9CCEA



807979



000000



808080



# Same Dimension

The Same Dimension uses a secret algorithm to generate beautiful new colors.



EACCCD



FFD9DA



EADACC



756A6A



B50006



360002



# Inverse Universe

The Inverse Universe completely reimagines the original color for something new.



EACCCD



FFD9DA



CCDCEA



756A6A



B50006

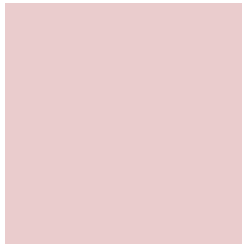


360002



# Previews

## White Background



This preview shows how the Hex color EACCCD looks on a white background.

## Color Contrast Check

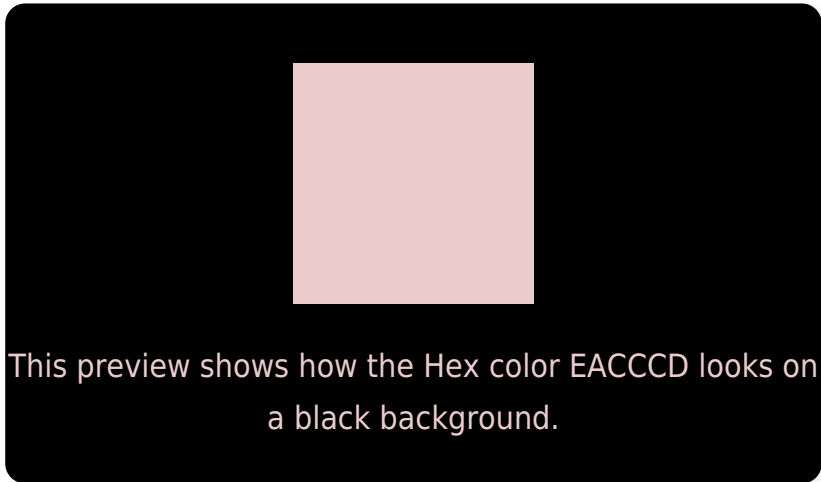
Large Text (above 18pt) WCAG AA × Fail

Any Text WCAG AA × Fail

Large Text (above 18pt) WCAG AAA × Fail

Any Text WCAG AAA × Fail

# Black Background



## Color Contrast Check

Large Text (above 18pt) WCAG AA ✓ Pass

Any Text WCAG AA ✓ Pass

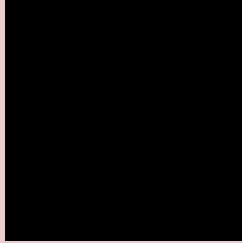
Large Text (above 18pt) WCAG AAA ✓ Pass

Any Text WCAG AAA ✓ Pass

If you want to check with other color combinations, try the [Color Contrast Checker](#).



## Hex EACCCD Background



This preview shows how black text looks on a background with the Hex color EACCCD.

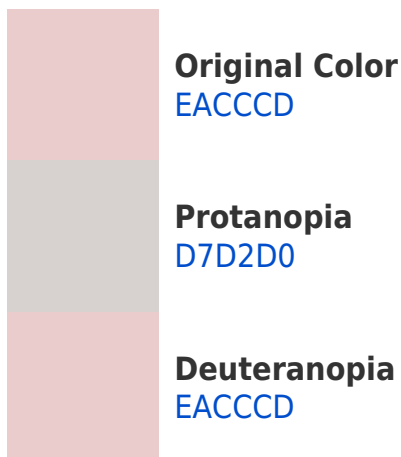


This preview shows how white text looks on a background with the Hex color EACCCD.

# Color Blindness Simulation

Color vision deficiency is a very complex topic, and I could not describe the different causes any better than Wikipedia does, so if you want to learn more, you should check out their [article about color blindness](#).

## Dichromacy





# Trichromacy



**Original Color**  
EACCCD

**Protanomaly**  
DED0CF

**Deuteranomaly**  
EACCCD

**Tritanomaly**  
EBCBD5

# Monochromacy



**Original Color**  
EACCCD

**Achromatopsia**  
D5D5D5

**Achromatomaly**  
DDD2D2

# CSS Examples

## Text

The CSS property to change the color of the text to Hex EACCCD is called "color". The color property can be set on classes, ids or directly on the HTML element.

This example shows how text in the color #EACCCD looks like.

```
.text, #text, p{  
    color:#EACCCD  
}
```

If you want to add a text shadow in that color use the text-shadow property, you can generate a text shadow directly with our [CSS Text Shadow Generator](#).

Here you see how black text with a 4 pixel #EACCCD colored shadow looks like.

```
.shadow{ text-shadow: 4px 4px 2px #EACCCD
}
```

## Border

The CSS property to change the border of an element to Hex EACCCD is called "border". The border property can be set on classes, ids or directly on the HTML element.

This example shows the color as border, it can be applied via the CSS property "border" or "border-color".

```
.border, #border, table{ border:4px solid
#EACCCD }
```

If only the border color should be changed use the property `border-color`.

```
.border{ border-color:#EACCCD }
```

If you want to add a box shadow in that color use:

Here you see how a box with a 4 pixel #EACCCD colored shadow looks like.

```
.boxshadow{ -moz-box-shadow:4px 4px 4px  
4px #EACCCD; -webkit-box-shadow:4px 4px  
4px 4px #EACCCD; box-shadow:4px 4px 4px  
4px #EACCCD }
```

# Background

The CSS property to change the background color of an element to Hex EACCCD is called "background". The background property can be set on classes, ids or directly on the HTML element.

```
.background, #background, body{  
background:#EACCCD }
```

If only the background color should be changed can be used:

```
.background{ background-color:#EACCCD }
```

This example shows the color as background, it is applied via the CSS property "background".

To optimize and compress your CSS code, you can use our [online CSS compressor and optimizer](#) based on csstidy. If you want to create a linear or radial gradient as background or border, check our [CSS Gradient Generator](#).



Hey! You found this booklet interesting? Support Converting Colors with the new Membership Option!

The pro membership hides all ads, plus gives you double the colors in the color bucket, and more awesome pro features!

**[Learn more, Memberships starting at \\$2.50/m!](#)**

**Follow me  
on Twitter!**

@ConvertingColor