

Converting Colors

Hex(EACDD5)

Have a look what the booklet for
Hex(EACDD5) contains.

Hex(EACDD5)	3
<i>Conversions</i>	4
<i>Details</i>	6
<i>Harmonies</i>	11
<i>Previews</i>	23
<i>Color Blindness Simulation</i>	26
<i>CSS Examples</i>	29

Color

Hex(EACDD5)

Conversions

Conversions Part 1

Format	Color
Hex	EACDD5
RGB	234, 205, 213
RGB Percent	92%, 80%, 84%
CMY	0.0824, 0.1961, 0.1647
CMYK	0.00, 0.12, 0.09, 0.08
HSL	343°, 41%, 86%
HSV	343°, 12%, 92%
XYZ	67.7732, 65.9592, 72.1101
YIQ	214.5830, 14.7160, 8.6360

Conversions

Conversions Part 2

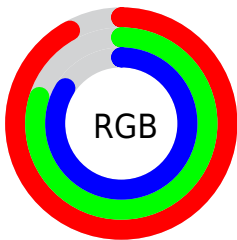
Format	Color
R _Y B	234, 205, 213
Decimal	15388117
CIE Lab	84.98, 11.45, -0.24
CIE LCh	85, 11.457, 358.822
Yxy	65.9592, 0.3292, 0.3204
Android (android.graphics.Color)	4293578197 (0xFFEACDD5)
YUV	214.5830, -0.7804, 17.0287
Hunter-Lab	81.2152, 6.8296, 4.2077

Details

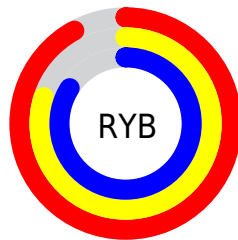
The Hex color **EACDD5** is a light color, and the websafe version is hex **FFCCCC**. A complement of this color would be **CDEAE2**, and the grayscale version is **D7D7D7**.

A 20% lighter version of the original color is **FFFFFF**, and **B2979E** is the 20% darker color. If you saturate the color by 10%, you get **EAB6C4**, and if you desaturate by 10%, it is **EAE4E6**.

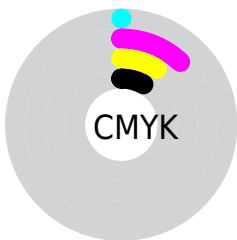
Distribution



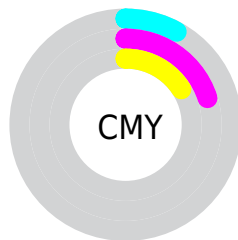
- Red (92%)
- Green (80%)
- Blue (84%)



- Red (92%)
- Yellow (80%)
- Blue (84%)



- Cyan (0%)
- Magenta (12%)
- Yellow (9%)
- Black (8%)



- Cyan (8%)
- Magenta (20%)
- Yellow (16%)

Brightness & Saturation Gradients

These gradients show how the Hex color EACDD5 changes by changing the brightness by 10 percent. The first figure shows a shift by +10% for each color and the second figure -10%.

Similar to the brightness gradients but the following saturation gradients show a change of the Hex color EACDD5 by changing the saturation by 10% instead.

 EACDD5

FFFFFF

 EACDD5

 CEB2B9

 B2979E

 977D84

 7D646B

 644C53

 4C353C

 352026

 200912

 000000

 EACDD5

 EACDD5

 EAB6C4

 EAE4E6

 EA9EB3

 EAFCF7

 EA87A2

 EAFFFF

 EA6F91

 EA5880

 EA416F

 EA295E

 EA124D

 EA0041

Harmonies

Analogous

The Analogous color harmony consists of three colors that are next to each other on the color wheel.



E2CFE0



EACDD5



ECCECA

Triad

The Triadic color harmony groups three colors that are evenly spaced from another and form a triangle on the color wheel.



EACDD5



D2D7C1



BED8E6

Complementary

The Complementary color scheme is a pair of colors which are on the opposite of each other on the color wheel.



EACDD5



CDEAE2

Split Complementary

Split-complementary colors differ from the complementary color scheme. The scheme consists of three colors, the original color and two neighbors of the complement color.



B9DADE



EACDD5



C5D9C9

Square

The Square scheme is like the rectangle color scheme, but the four colors are evenly spaced on the color wheel.



EACDD5



DED3BF



BCDBD3



C9D5EA

Rectangle

The Rectangle color scheme consists of four colors that form a rectangle on the color wheel.



EACDD5



E9CFC4



BCDBD3



BBD9E4

Sweetspot

The Sweet Spot groups the original color and five complimentary colors.



EACDD5



FFF5F8



E2CDEA



80797B



000000



808080

Same Dimension

The Same Dimension uses a secret algorithm to generate beautiful new colors.



EACDD5



FFD9E3



EAD3CD



756A6D



B50032



36000F

Inverse Universe

The Inverse Universe completely reimagines the original color for something new.



EACDD5



FFD9E3



CDE4EA



756A6D



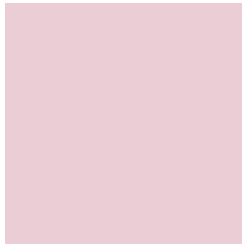
B50032



36000F

Previews

White Background



This preview shows how the Hex color EACDD5 looks on a white background.

Color Contrast Check

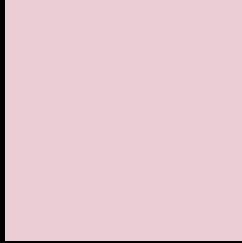
Large Text (above 18pt) WCAG AA × Fail

Any Text WCAG AA × Fail

Large Text (above 18pt) WCAG AAA × Fail

Any Text WCAG AAA × Fail

Black Background



This preview shows how the Hex color EACDD5 looks on a black background.

Color Contrast Check

Large Text (above 18pt) WCAG AA ✓ Pass

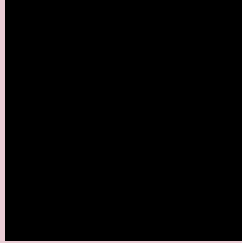
Any Text WCAG AA ✓ Pass

Large Text (above 18pt) WCAG AAA ✓ Pass

Any Text WCAG AAA ✓ Pass

If you want to check with other color combinations, try the [Color Contrast Checker](#).

Hex EACDD5 Background



This preview shows how black text looks on a background with the Hex color EACDD5.

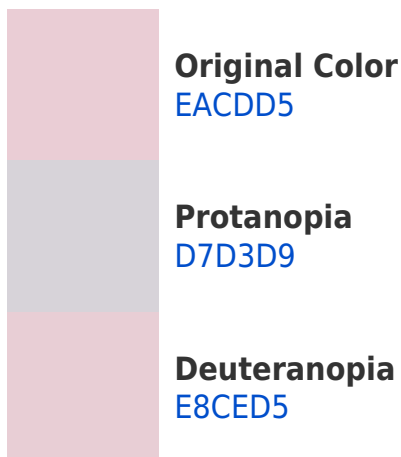


This preview shows how white text looks on a background with the Hex color EACDD5.

Color Blindness Simulation

Color vision deficiency is a very complex topic, and I could not describe the different causes any better than Wikipedia does, so if you want to learn more, you should check out their [article about color blindness](#).

Dichromacy



Trichromacy



Original Color
EACDD5

Protanomaly
DED1D8

Deuteranomaly
E9CED5

Tritanomaly
EBCCD9

Monochromacy



Original Color
EACDD5

Achromatopsia
D7D7D7

Achromatomaly
DED3D6

CSS Examples

Text

The CSS property to change the color of the text to Hex EACDD5 is called "color". The color property can be set on classes, ids or directly on the HTML element.

This example shows how text in the color #EACDD5 looks like.

```
.text, #text, p{  
    color:#EACDD5  
}
```

If you want to add a text shadow in that color use the text-shadow property, you can generate a text shadow directly with our [CSS Text Shadow Generator](#).

Here you see how black text with a 4 pixel #EACDD5 colored shadow looks like.

```
.shadow{ text-shadow: 4px 4px 2px #EACDD5 }  
}
```

Border

The CSS property to change the border of an element to Hex EACDD5 is called "border". The border property can be set on classes, ids or directly on the HTML element.

This example shows the color as border, it can be applied via the CSS property "border" or "border-color".

```
.border, #border, table{ border:4px solid #EACDD5 }  
}
```

If only the border color should be changed use the property `border-color`.

```
.border{ border-color:#EACDD5 }
```

If you want to add a box shadow in that color use:

Here you see how a box with a 4 pixel #EACDD5 colored shadow looks like.

```
.boxshadow{ -moz-box-shadow:4px 4px 4px  
4px #EACDD5; -webkit-box-shadow:4px 4px  
4px 4px #EACDD5; box-shadow:4px 4px 4px  
4px #EACDD5 }
```

Background

The CSS property to change the background color of an element to Hex EACDD5 is called "background". The background property can be set on classes, ids or directly on the HTML element.

```
.background, #background, body{  
background:#EACDD5 }
```

If only the background color should be changed can be used:

```
.background{ background-color:#EACDD5 }
```

This example shows the color as background, it is applied via the CSS property "background".

To optimize and compress your CSS code, you can use our [online CSS compressor and optimizer](#) based on csstidy. If you want to create a linear or radial gradient as background or border, check our [CSS Gradient Generator](#).

Hey! You found this booklet interesting? Support Converting Colors with the new Membership Option!

The pro membership hides all ads, plus gives you double the colors in the color bucket, and more awesome pro features!

[Learn more, Memberships starting at \\$2.50/m!](#)

**Follow me
on Twitter!**

@ConvertingColor