

Converting Colors

Hex(EACEC2)

Have a look what the booklet for
Hex(EACEC2) contains.

| | |
|--|----|
| Hex(EACEC2) | 3 |
| <i>Conversions</i> | 4 |
| <i>Details</i> | 6 |
| <i>Harmonies</i> | 11 |
| <i>Previews</i> | 23 |
| <i>Color Blindness Simulation</i> | 26 |
| <i>CSS Examples</i> | 29 |

Color

Hex(EACEC2)

Conversions

Conversions Part 1

| Format | Color |
|-------------|---------------------------|
| Hex | EACEC2 |
| RGB | 234, 206, 194 |
| RGB Percent | 92%, 81%, 76% |
| CMY | 0.0824, 0.1922, 0.2392 |
| CMYK | 0.00, 0.12, 0.17, 0.08 |
| HSL | 18°, 49%, 84% |
| HSV | 18°, 17%, 92% |
| XYZ | 65.7406, 65.5301, 60.2226 |
| YIQ | 213.0040, 20.5400, 2.2040 |

Conversions

Conversions Part 2

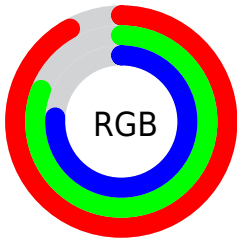
| Format | Color |
|-------------------------------------|-------------------------------|
| R _Y B | 234, 211, 194 |
| Decimal | 15388354 |
| CIE Lab | 84.76, 7.89, 9.55 |
| CIE LCh | 85, 12.384, 50.431 |
| Yxy | 65.5301, 0.3433, 0.3422 |
| Android (android.graphics.Color) | 4293578434 (0xFFEACEC2) |
| YUV | 213.0040, -9.3690, 18.4135 |
| Hunter-Lab | 80.9507, 3.2975, 12.5571 |

Details

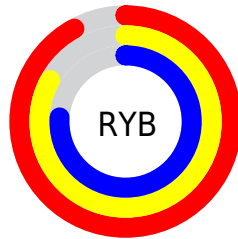
The Hex color **EACEC2** is a light color, and the websafe version is hex **FFCCCC**. A complement of this color would be **C2DEEA**, and the grayscale version is **D5D5D5**.

A 20% lighter version of the original color is **FFFFFFA**, and **B2988C** is the 20% darker color. If you saturate the color by 10%, you get **EABEAB**, and if you desaturate by 10%, it is **EADED9**.

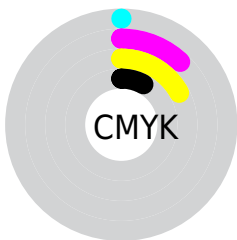
Distribution



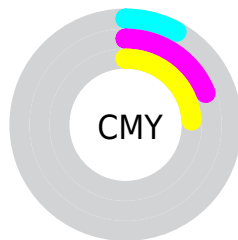
- Red (92%)
- Green (81%)
- Blue (76%)



- Red (92%)
- Yellow (83%)
- Blue (76%)



- Cyan (0%)
- Magenta (12%)
- Yellow (17%)
- Black (8%)



- Cyan (8%)
- Magenta (19%)
- Yellow (24%)

Brightness & Saturation Gradients

These gradients show how the Hex color EACEC2 changes by changing the brightness by 10 percent. The first figure shows a shift by +10% for each color and the second figure -10%.

Similar to the brightness gradients but the following saturation gradients show a change of the Hex color EACEC2 by changing the saturation by 10% instead.

 EACEC2

 EACEC2

FFFFFFF

 CEB3A7

 FFFFFFFA

 B2988C

 977E73

 7D655A

 634D43

 4B362D

 342118

 200A00

 000000

 EA4600

 EA4600

 EA4B07

 EA4B07

 EA5B1E

 EA5B1E

 EA6C36

 EA6C36

 EA7C4D

 EA7C4D

 EA8C64

 EA8C64

 EA9D7C

 EA9D7C

 EABEAB

 EABEAB

 EACEC2

 EACEC2

Harmonies

Analogous

The Analogous color harmony consists of three colors that are next to each other on the color wheel.



E6CCE6



E6CCE6



E6CCE6

Triad

The Triadic color harmony groups three colors that are evenly spaced from another and form a triangle on the color wheel.



EACEC2



BCDACF



D1D2E9

Complementary

The Complementary color scheme is a pair of colors which are on the opposite of each other on the color wheel.



EACEC2



C2DEEA

Split Complementary

Split-complementary colors differ from the complementary color scheme. The scheme consists of three colors, the original color and two neighbors of the complement color.



C3D6EA



EACEC2



B6DADB

Square

The Square scheme is like the rectangle color scheme, but the four colors are evenly spaced on the color wheel.



EACEC2



C7D9C4



B9D9E5



DFCEE3

Rectangle

The Rectangle color scheme consists of four colors that form a rectangle on the color wheel.



EACEC2



D9D4BD



B9D9E5



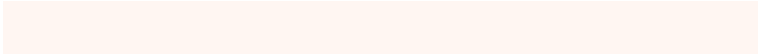
CCD3EA

Sweetspot

The Sweet Spot groups the original color and five complimentary colors.



EACEC2



FFF6F2



EAC2DE



807A78



000000



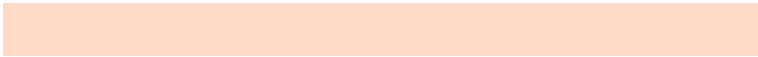
808080

Same Dimension

The Same Dimension uses a secret algorithm to generate beautiful new colors.



EACEC2



FFDAC9



EAE2C2



756D6A



B53600



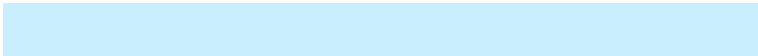
361000

Inverse Universe

The Inverse Universe completely reimagines the original color for something new.



C2DEEA



C9EFFF



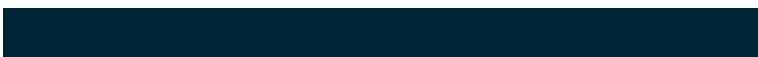
C2CAEA



6A7275



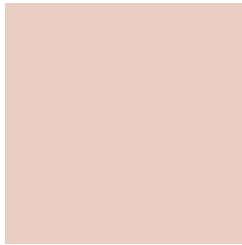
007FB5



002536

Previews

White Background



This preview shows how the Hex color EACEC2 looks on a white background.

Color Contrast Check

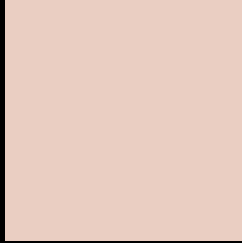
Large Text (above 18pt) WCAG AA × Fail

Any Text WCAG AA × Fail

Large Text (above 18pt) WCAG AAA × Fail

Any Text WCAG AAA × Fail

Black Background



This preview shows how the Hex color EACEC2 looks on a black background.

Color Contrast Check

Large Text (above 18pt) WCAG AA ✓ Pass

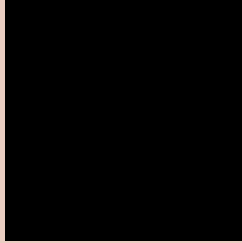
Any Text WCAG AA ✓ Pass

Large Text (above 18pt) WCAG AAA ✓ Pass

Any Text WCAG AAA ✓ Pass

If you want to check with other color combinations, try the [Color Contrast Checker](#).

Hex EACEC2 Background



This preview shows how black text looks on a background with the Hex color EACEC2.

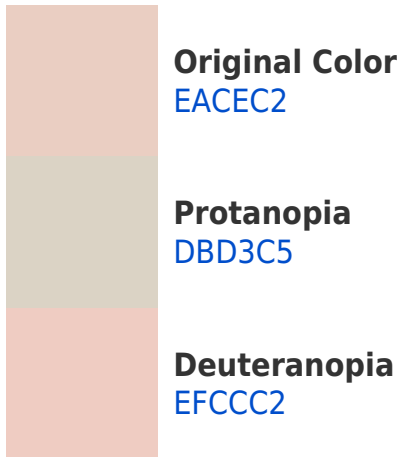


This preview shows how white text looks on a background with the Hex color EACEC2.

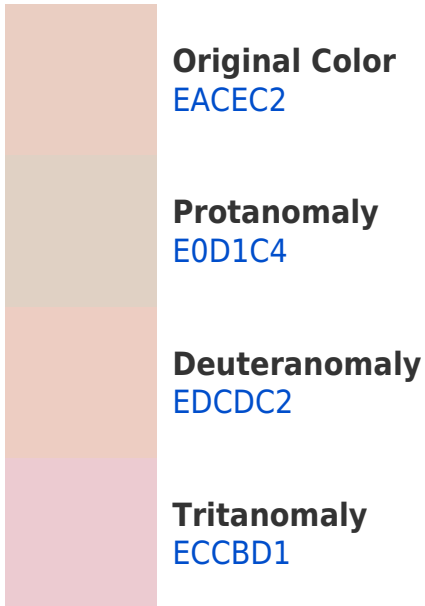
Color Blindness Simulation

Color vision deficiency is a very complex topic, and I could not describe the different causes any better than Wikipedia does, so if you want to learn more, you should check out their [article about color blindness](#).

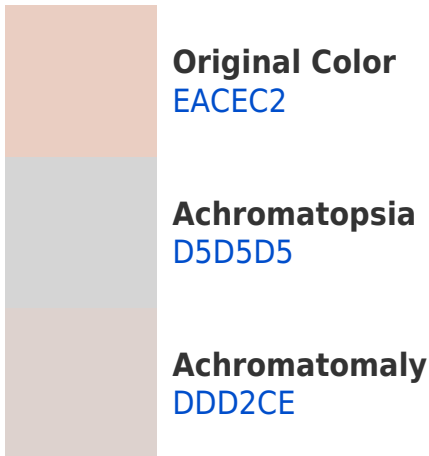
Dichromacy



Trichromacy



Monochromacy



CSS Examples

Text

The CSS property to change the color of the text to Hex EACEC2 is called "color". The color property can be set on classes, ids or directly on the HTML element.

This example shows how text in the color #EACEC2 looks like.

```
.text, #text, p{  
    color:#EACEC2  
}
```

If you want to add a text shadow in that color use the text-shadow property, you can generate a text shadow directly with our [CSS Text Shadow Generator](#).

Here you see how black text with a 4 pixel #EACEC2 colored shadow looks like.

```
.shadow{ text-shadow: 4px 4px 2px #EACEC2
}
```

Border

The CSS property to change the border of an element to Hex EACEC2 is called "border". The border property can be set on classes, ids or directly on the HTML element.

This example shows the color as border, it can be applied via the CSS property "border" or "border-color".

```
.border, #border, table{ border:4px solid
#EACEC2 }
```

If only the border color should be changed use the property `border-color`.

```
.border{ border-color:#EACEC2 }
```

If you want to add a box shadow in that color use:

Here you see how a box with a 4 pixel #EACEC2 colored shadow looks like.

```
.boxshadow{ -moz-box-shadow:4px 4px 4px  
4px #EACEC2; -webkit-box-shadow:4px 4px  
4px 4px #EACEC2; box-shadow:4px 4px 4px  
4px #EACEC2 }
```

Background

The CSS property to change the background color of an element to Hex EACEC2 is called "background". The background property can be set on classes, ids or directly on the HTML element.

```
.background, #background, body{  
background:#EACEC2 }
```

If only the background color should be changed can be used:

```
.background{ background-color:#EACEC2 }
```

This example shows the color as background, it is applied via the CSS property "background".

To optimize and compress your CSS code, you can use our [online CSS compressor and optimizer](#) based on csstidy. If you want to create a linear or radial gradient as background or border, check our [CSS Gradient Generator](#).

Hey! You found this booklet interesting? Support Converting Colors with the new Membership Option!

The pro membership hides all ads, plus gives you double the colors in the color bucket, and more awesome pro features!

[Learn more, Memberships starting at \\$2.50/m!](#)

**Follow me
on Twitter!**

@ConvertingColor