

Converting Colors

Hex(EACFC9)

Have a look what the booklet for
Hex(EACFC9) contains.

Hex(EACFC9)	3
<i>Conversions</i>	4
<i>Details</i>	6
<i>Harmonies</i>	11
<i>Previews</i>	23
<i>Color Blindness Simulation</i>	26
<i>CSS Examples</i>	29

Color

Hex(EACFC9)

Conversions

Conversions Part 1

Format	Color
Hex	EACFC9
RGB	234, 207, 201
RGB Percent	92%, 81%, 79%
CMY	0.0824, 0.1882, 0.2118
CMYK	0.00, 0.12, 0.14, 0.08
HSL	11°, 44%, 85%
HSV	11°, 14%, 92%
XYZ	66.7871, 66.3351, 64.5422
YIQ	214.3890, 18.0180, 3.8580

Conversions

Conversions Part 2

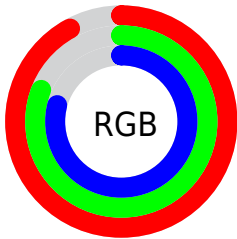
Format	Color
RYB	234, 208, 201
Decimal	15388617
CIELab	85.17, 8.45, 6.42
CIELCh	85, 10.614, 37.221
Yxy	66.3351, 0.3379, 0.3356
Android (android.graphics.Color)	4293578697 (0xFFEACFC9)
YUV	214.3890, -6.6008, 17.1988
Hunter-Lab	81.4464, 3.8412, 10.0281

Details

The Hex color **EACFC9** is a light color, and the websafe version is hex **FFCCCC**. A complement of this color would be **C9E4EA**, and the grayscale version is **D6D6D6**.

A 20% lighter version of the original color is **FFFFFF**, and **B29993** is the 20% darker color. If you saturate the color by 10%, you get **EABCB2**, and if you desaturate by 10%, it is **EAE2E0**.

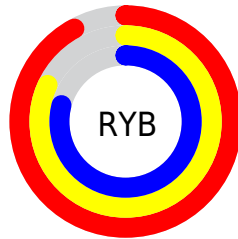
Distribution



Red (92%)

Green (81%)

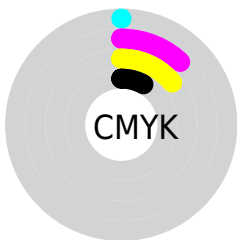
Blue (79%)



Red (92%)

Yellow (82%)

Blue (79%)

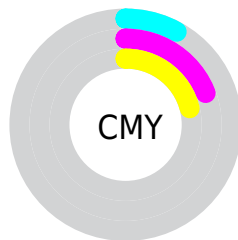


Cyan (0%)

Magenta (12%)

Yellow (14%)

Black (8%)



Cyan (8%)

Magenta (19%)

Yellow (21%)

Brightness & Saturation Gradients

These gradients show how the Hex color EACFC9 changes by changing the brightness by 10 percent. The first figure shows a shift by +10% for each color and the second figure -10%.

Similar to the brightness gradients but the following saturation gradients show a change of the Hex color EACFC9 by changing the saturation by 10% instead.

 EACFC9

FFFFFF

 EACFC9

 CEB3AE

 B29993

 977F79

 7D6661

 644E49

 4C3732

 34211D

 200C04

 000000

 EACFC9

 EACFC9

 EABCB2

 EAE2E0

 EAA99A

 EAF5F8

 EA9683

 EAFFFF

 EA826B

 EA6F54

 EA5C3D

 EA4925

 EA360E

 EA2B00

Harmonies

Analogous

The Analogous color harmony consists of three colors that are next to each other on the color wheel.



EACED3



EACFC9



E4D2C3

Triad

The Triadic color harmony groups three colors that are evenly spaced from another and form a triangle on the color wheel.



EACFC9



C4DACD



CDD5E8

Complementary

The Complementary color scheme is a pair of colors which are on the opposite of each other on the color wheel.



EACFC9



C9E4EA

Split Complementary

Split-complementary colors differ from the complementary color scheme. The scheme consists of three colors, the original color and two neighbors of the complement color.



C2D8E7



EACFC9



BDDBD7

Square

The Square scheme is like the rectangle color scheme, but the four colors are evenly spaced on the color wheel.



EACFC9



CFD8C5



BCDAE0



DAD1E5

Rectangle

The Rectangle color scheme consists of four colors that form a rectangle on the color wheel.



EACFC9



DED4C1



BCDAE0



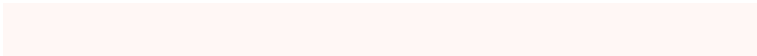
C9D6E9

Sweetspot

The Sweet Spot groups the original color and five complimentary colors.



EACFC9



FFF7F5



EAC9E4



807A79



000000



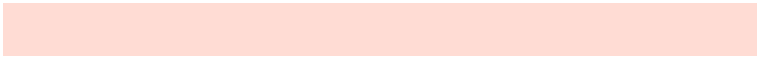
808080

Same Dimension

The Same Dimension uses a secret algorithm to generate beautiful new colors.



EACFC9



FFDCD4



EADFC9



756C6A



B52100



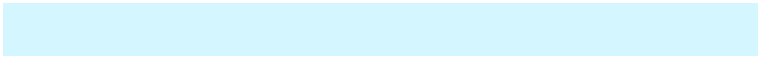
360A00

Inverse Universe

The Inverse Universe completely reimagines the original color for something new.



C9E4EA



D4F7FF



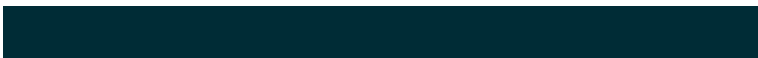
C9D4EA



6A7375



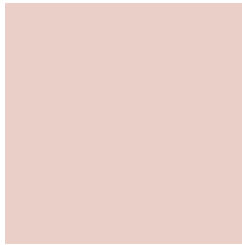
0094B5



002C36

Previews

White Background



This preview shows how the Hex color EACFC9 looks on a white background.

Color Contrast Check

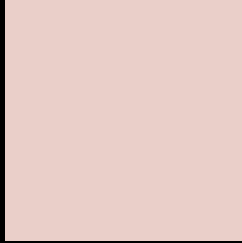
Large Text (above 18pt) WCAG AA × Fail

Any Text WCAG AA × Fail

Large Text (above 18pt) WCAG AAA × Fail

Any Text WCAG AAA × Fail

Black Background



This preview shows how the Hex color EACFC9 looks on a black background.

Color Contrast Check

Large Text (above 18pt) WCAG AA ✓ Pass

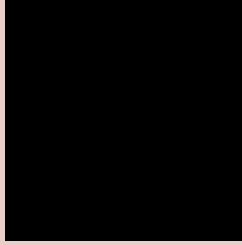
Any Text WCAG AA ✓ Pass

Large Text (above 18pt) WCAG AAA ✓ Pass

Any Text WCAG AAA ✓ Pass

If you want to check with other color combinations, try the [Color Contrast Checker](#).

Hex EACFC9 Background



This preview shows how black text looks on a background with the Hex color EACFC9.

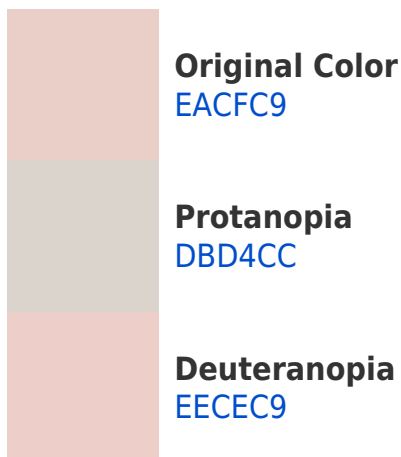


This preview shows how white text looks on a background with the Hex color EACFC9.

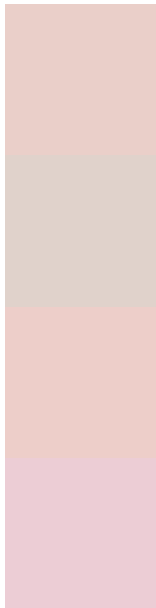
Color Blindness Simulation

Color vision deficiency is a very complex topic, and I could not describe the different causes any better than Wikipedia does, so if you want to learn more, you should check out their [article about color blindness](#).

Dichromacy



Trichromacy



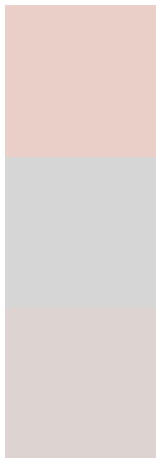
Original Color
EACFC9

Protanomaly
E0D2CB

Deuteranomaly
EDCEC9

Tritanomaly
ECCDD5

Monochromacy



Original Color
EACFC9

Achromatopsia
D6D6D6

Achromatomaly
DDD3D1

CSS Examples

Text

The CSS property to change the color of the text to Hex EACFC9 is called "color". The color property can be set on classes, ids or directly on the HTML element.

This example shows how text in the color #EACFC9 looks like.

```
.text, #text, p{  
    color:#EACFC9  
}
```

If you want to add a text shadow in that color use the text-shadow property, you can generate a text shadow directly with our [CSS Text Shadow Generator](#).

Here you see how black text with a 4 pixel #EACFC9 colored shadow looks like.

```
.shadow{ text-shadow: 4px 4px 2px #EACFC9  
}
```

Border

The CSS property to change the border of an element to Hex EACFC9 is called "border". The border property can be set on classes, ids or directly on the HTML element.

This example shows the color as border, it can be applied via the CSS property "border" or "border-color".

```
.border, #border, table{ border:4px solid  
#EACFC9 }
```

If only the border color should be changed use the property `border-color`.

```
.border{ border-color:#EACFC9 }
```

If you want to add a box shadow in that color use:

Here you see how a box with a 4 pixel #EACFC9 colored shadow looks like.

```
.boxshadow{ -moz-box-shadow:4px 4px 4px  
4px #EACFC9; -webkit-box-shadow:4px 4px  
4px 4px #EACFC9; box-shadow:4px 4px 4px  
4px #EACFC9 }
```

Background

The CSS property to change the background color of an element to Hex EACFC9 is called "background". The background property can be set on classes, ids or directly on the HTML element.

```
.background, #background, body{  
background:#EACFC9 }
```

If only the background color should be changed can be used:

```
.background{ background-color:#EACFC9 }
```

This example shows the color as background, it is applied via the CSS property "background".

To optimize and compress your CSS code, you can use our [online CSS compressor and optimizer](#) based on csstidy. If you want to create a linear or radial gradient as background or border, check our [CSS Gradient Generator](#).

Hey! You found this booklet interesting? Support Converting Colors with the new Membership Option!

The pro membership hides all ads, plus gives you double the colors in the color bucket, and more awesome pro features!

[Learn more, Memberships starting at \\$2.50/m!](#)

**Follow me
on Twitter!**

@ConvertingColor