

Converting Colors

Hex(EAD2C2)

Have a look what the booklet for
Hex(EAD2C2) contains.

Hex(EAD2C2)	3
<i>Conversions</i>	4
<i>Details</i>	6
<i>Harmonies</i>	11
<i>Previews</i>	23
<i>Color Blindness Simulation</i>	26
<i>CSS Examples</i>	29

Color

Hex(EAD2C2)

Conversions

Conversions Part 1

Format	Color
Hex	EAD2C2
RGB	234, 210, 194
RGB Percent	92%, 82%, 76%
CMY	0.0824, 0.1765, 0.2392
CMYK	0.00, 0.10, 0.17, 0.08
HSL	24°, 49%, 84%
HSV	24°, 17%, 92%
XYZ	66.7159, 67.4807, 60.5477
YIQ	215.3520, 19.4400, 0.1120

Conversions

Conversions Part 2

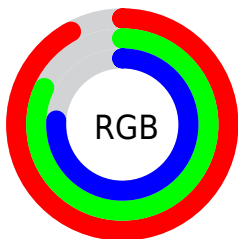
Format	Color
RYB	234, 221, 194
Decimal	15389378
CIELab	85.75, 5.80, 10.96
CIELCh	86, 12.398, 62.118
Yxy	67.4807, 0.3426, 0.3465
Android (android.graphics.Color)	4293579458 (0xFFEAD2C2)
YUV	215.3520, -10.5265, 16.3543
Hunter-Lab	82.1466, 1.2133, 13.8018

Details

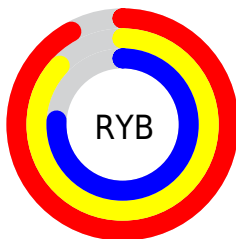
The Hex color **EAD2C2** is a light color, and the websafe version is hex **FFCCCC**. A complement of this color would be **C2DAEA**, and the grayscale version is **D7D7D7**.

A 20% lighter version of the original color is **FFFFFFA**, and **B29C8C** is the 20% darker color. If you saturate the color by 10%, you get **EAC4AB**, and if you desaturate by 10%, it is **EAE0D9**.

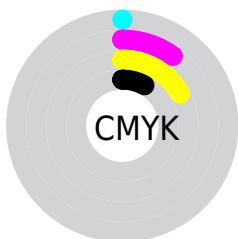
Distribution



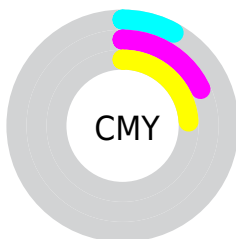
- Red (92%)
- Green (82%)
- Blue (76%)



- Red (92%)
- Yellow (87%)
- Blue (76%)



- Cyan (0%)
- Magenta (10%)
- Yellow (17%)
- Black (8%)



- Cyan (8%)
- Magenta (18%)
- Yellow (24%)

Brightness & Saturation Gradients

These gradients show how the Hex color EAD2C2 changes by changing the brightness by 10 percent. The first figure shows a shift by +10% for each color and the second figure -10%.

Similar to the brightness gradients but the following saturation gradients show a change of the Hex color EAD2C2 by changing the saturation by 10% instead.

 EAD2C2

 EAD2C2

FFFFFF

 CEB6A7

 FFFFFA

 B29C8C

 978273

 7D685A

 645043

 4B392D

 342418

 200F00

 000000

 EAD2C2

 EAD2C2

 EAC4AB

 EAE0D9

 EAB693

 EAEEF1

 EAA87C

 EAFCFF

 EA9A64

 EAFFFF

 EA8C4D

 EA7E36

 EA701E

 EA6207

 EA5E00

Harmonies

Analogous

The Analogous color harmony consists of three colors that are next to each other on the color wheel.



F0CFCA



EAD2C2



DFD6BF

Triad

The Triadic color harmony groups three colors that are evenly spaced from another and form a triangle on the color wheel.



EAD2C2



BCDDD7



DAD3EA

Complementary

The Complementary color scheme is a pair of colors which are on the opposite of each other on the color wheel.



EAD2C2



C2DAEA

Split Complementary

Split-complementary colors differ from the complementary color scheme. The scheme consists of three colors, the original color and two neighbors of the complement color.



CBD7EE



EAD2C2



B9DDE2

Square

The Square scheme is like the rectangle color scheme, but the four colors are evenly spaced on the color wheel.



EAD2C2



C5DCCB



BFD8EB



E7D0E2

Rectangle

The Rectangle color scheme consists of four colors that form a rectangle on the color wheel.



EAD2C2



D7D8C1



BFD8EB



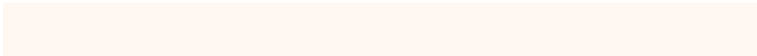
D5D4EC

Sweetspot

The Sweet Spot groups the original color and five complimentary colors.



EAD2C2



FFF7F2



EAC2DA



807B78



000000



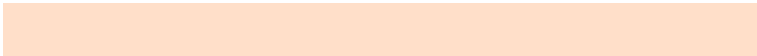
808080

Same Dimension

The Same Dimension uses a secret algorithm to generate beautiful new colors.



EAD2C2



FFDFC9



EAE6C2



756E6A



B54800



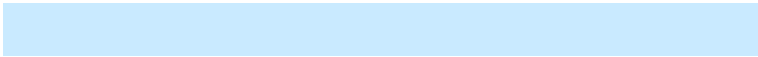
361500

Inverse Universe

The Inverse Universe completely reimagines the original color for something new.



C2DAEA



C9EAFF



C2C6EA



6A7175



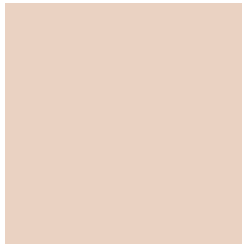
006DB5



002036

Previews

White Background



This preview shows how the Hex color EAD2C2 looks on a white background.

Color Contrast Check

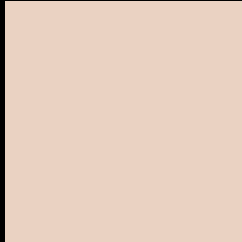
Large Text (above 18pt) WCAG AA × Fail

Any Text WCAG AA × Fail

Large Text (above 18pt) WCAG AAA × Fail

Any Text WCAG AAA × Fail

Black Background



This preview shows how the Hex color EAD2C2 looks on a black background.

Color Contrast Check

Large Text (above 18pt) WCAG AA ✓ Pass

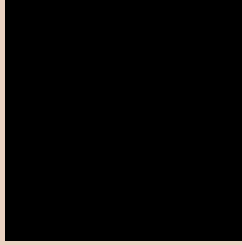
Any Text WCAG AA ✓ Pass

Large Text (above 18pt) WCAG AAA ✓ Pass

Any Text WCAG AAA ✓ Pass

If you want to check with other color combinations, try the [Color Contrast Checker](#).

Hex EAD2C2 Background



This preview shows how black text looks on a background with the Hex color EAD2C2.

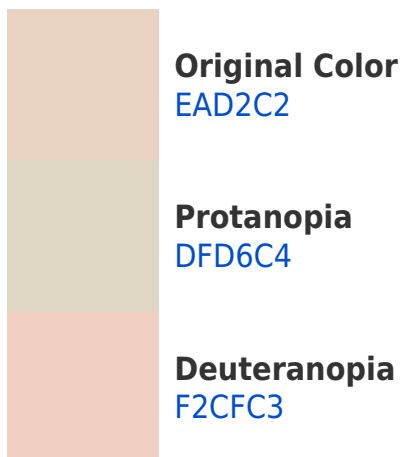


This preview shows how white text looks on a background with the Hex color EAD2C2.

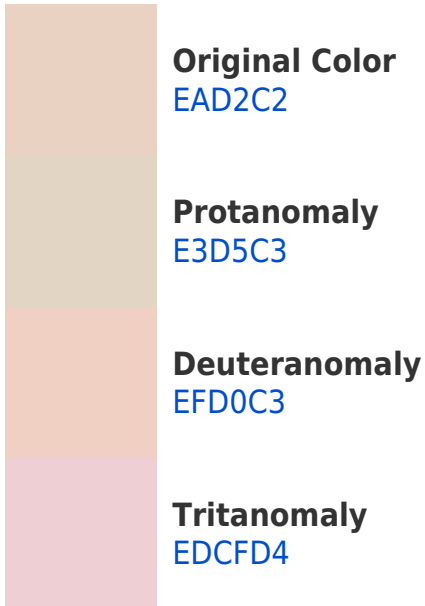
Color Blindness Simulation

Color vision deficiency is a very complex topic, and I could not describe the different causes any better than Wikipedia does, so if you want to learn more, you should check out their [article about color blindness](#).

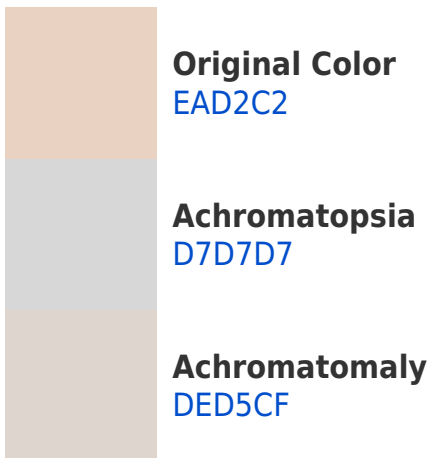
Dichromacy



Trichromacy



Monochromacy



CSS Examples

Text

The CSS property to change the color of the text to Hex EAD2C2 is called "color". The color property can be set on classes, ids or directly on the HTML element.

This example shows how text in the color #EAD2C2 looks like.

```
.text, #text, p{  
    color:#EAD2C2  
}
```

If you want to add a text shadow in that color use the text-shadow property, you can generate a text shadow directly with our [CSS Text Shadow Generator](#).

Here you see how black text with a 4 pixel #EAD2C2 colored shadow looks like.

```
.shadow{ text-shadow: 4px 4px 2px #EAD2C2  
}
```

Border

The CSS property to change the border of an element to Hex EAD2C2 is called "border". The border property can be set on classes, ids or directly on the HTML element.

This example shows the color as border, it can be applied via the CSS property "border" or "border-color".

```
.border, #border, table{ border:4px solid  
#EAD2C2 }
```

If only the border color should be changed use the property `border-color`.

```
.border{ border-color:#EAD2C2 }
```

If you want to add a box shadow in that color use:

Here you see how a box with a 4 pixel #EAD2C2 colored shadow looks like.

```
.boxshadow{ -moz-box-shadow:4px 4px 4px  
4px #EAD2C2; -webkit-box-shadow:4px 4px  
4px 4px #EAD2C2; box-shadow:4px 4px 4px  
4px #EAD2C2 }
```

Background

The CSS property to change the background color of an element to Hex EAD2C2 is called "background". The background property can be set on classes, ids or directly on the HTML element.

```
.background, #background, body{  
background:#EAD2C2 }
```

If only the background color should be changed can be used:

```
.background{ background-color:#EAD2C2 }
```

This example shows the color as background, it is applied via the CSS property "background".

To optimize and compress your CSS code, you can use our [online CSS compressor and optimizer](#) based on csstidy. If you want to create a linear or radial gradient as background or border, check our [CSS Gradient Generator](#).

Hey! You found this booklet interesting? Support Converting Colors with the new Membership Option!

The pro membership hides all ads, plus gives you double the colors in the color bucket, and more awesome pro features!

[Learn more, Memberships starting at \\$2.50/m!](#)

**Follow me
on Twitter!**

@ConvertingColor