

Converting Colors

Hex(EAD2D7)

Have a look what the booklet for
Hex(EAD2D7) contains.

Hex(EAD2D7)	3
<i>Conversions</i>	4
<i>Details</i>	6
<i>Harmonies</i>	11
<i>Previews</i>	23
<i>Color Blindness Simulation</i>	26
<i>CSS Examples</i>	29

Color

Hex(EAD2D7)

Conversions

Conversions Part 1

Format	Color
Hex	EAD2D7
RGB	234, 210, 215
RGB Percent	92%, 82%, 84%
CMY	0.0824, 0.1765, 0.1569
CMYK	0.00, 0.10, 0.08, 0.08
HSL	348°, 36%, 87%
HSV	348°, 10%, 92%
XYZ	69.2440, 68.4919, 73.8607
YIQ	217.7460, 12.6990, 6.6430

Conversions

Conversions Part 2

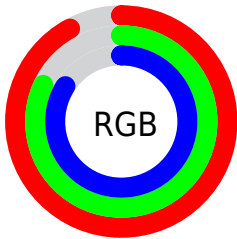
Format	Color
RYB	234, 210, 215
Decimal	15389399
CIELab	86.25, 9.16, 0.57
CIElCh	86, 9.179, 3.532
Yxy	68.4919, 0.3272, 0.3237
Android (android.graphics.Color)	4293579479 (0xFFEAD2D7)
YUV	217.7460, -1.3538, 14.2548
Hunter-Lab	82.7598, 4.5188, 5.0173

Details

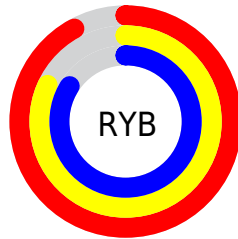
The Hex color **EAD2D7** is a light color, and the websafe version is hex **CCCCCC**. A complement of this color would be **D2EAE5**, and the grayscale version is **DADADA**.

A 20% lighter version of the original color is **FFFFFF**, and **B29CA0** is the 20% darker color. If you saturate the color by 10%, you get **EABBC4**, and if you desaturate by 10%, it is **EAE9EA**.

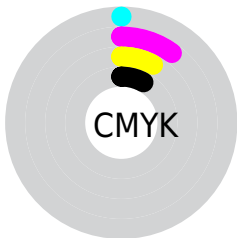
Distribution



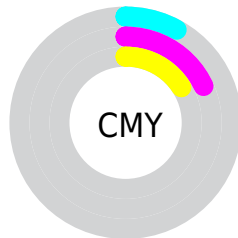
- Red (92%)
- Green (82%)
- Blue (84%)



- Red (92%)
- Yellow (82%)
- Blue (84%)



- Cyan (0%)
- Magenta (10%)
- Yellow (8%)
- Black (8%)



- Cyan (8%)
- Magenta (18%)
- Yellow (16%)

Brightness & Saturation Gradients

These gradients show how the Hex color EAD2D7 changes by changing the brightness by 10 percent. The first figure shows a shift by +10% for each color and the second figure -10%.

Similar to the brightness gradients but the following saturation gradients show a change of the Hex color EAD2D7 by changing the saturation by 10% instead.

 EAD2D7

FFFFFF

 EAD2D7

 CEB6BB

 B29CA0

 978186

 7D686D

 645055

 4C393E

 352428

 200F13

 000000

 EAD2D7

 EAD2D7

 EABBC4

 EAE9EA

 EAA3B2

 EAFFFC

 EA8C9F

 EAFFFF

 EA748D

 EA5D7A

 EA4668

 EA2E55

 EA1743

 EA0031

Harmonies

Analogous

The Analogous color harmony consists of three colors that are next to each other on the color wheel.



E4D3E0



EAD2D7



EBD3CF

Triad

The Triadic color harmony groups three colors that are evenly spaced from another and form a triangle on the color wheel.



EAD2D7



D4DAC9



C7DBE7

Complementary

The Complementary color scheme is a pair of colors which are on the opposite of each other on the color wheel.



EAD2D7



D2EAE5

Split Complementary

Split-complementary colors differ from the complementary color scheme. The scheme consists of three colors, the original color and two neighbors of the complement color.



C3DDE1



EAD2D7



CBDCD0

Square

The Square scheme is like the rectangle color scheme, but the four colors are evenly spaced on the color wheel.



EAD2D7



DED7C7



C4DDD8



D0D8E9

Rectangle

The Rectangle color scheme consists of four colors that form a rectangle on the color wheel.



EAD2D7



E8D4CA



C4DDD8



C5DCE5

Sweetspot

The Sweet Spot groups the original color and five complimentary colors.



EAD2D7



FFF7F9



E5D2EA



807A7B



000000



808080

Same Dimension

The Same Dimension uses a secret algorithm to generate beautiful new colors.



EAD2D7



FFE0E7



EAD9D2



756A6C



B50026



36000B

Inverse Universe

The Inverse Universe completely reimagines the original color for something new.



EAD2D7



FFE0E7



D2E3EA



756A6C



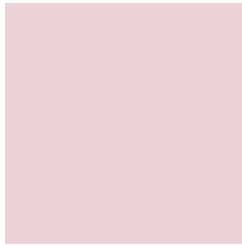
B50026



36000B

Previews

White Background



This preview shows how the Hex color EAD2D7 looks on a white background.

Color Contrast Check

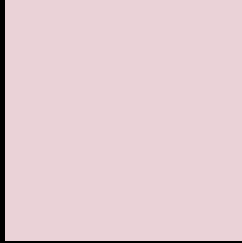
Large Text (above 18pt) WCAG AA × Fail

Any Text WCAG AA × Fail

Large Text (above 18pt) WCAG AAA × Fail

Any Text WCAG AAA × Fail

Black Background



This preview shows how the Hex color EAD2D7 looks on a black background.

Color Contrast Check

Large Text (above 18pt) WCAG AA ✓ Pass

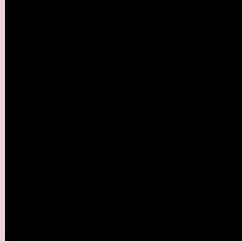
Any Text WCAG AA ✓ Pass

Large Text (above 18pt) WCAG AAA ✓ Pass

Any Text WCAG AAA ✓ Pass

If you want to check with other color combinations, try the [Color Contrast Checker](#).

Hex EAD2D7 Background



This preview shows how black text looks on a background with the Hex color EAD2D7.

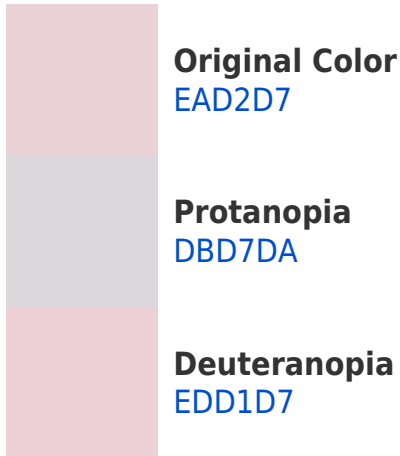


This preview shows how white text looks on a background with the Hex color EAD2D7.

Color Blindness Simulation

Color vision deficiency is a very complex topic, and I could not describe the different causes any better than Wikipedia does, so if you want to learn more, you should check out their [article about color blindness](#).

Dichromacy





Tritanopia
EBD0E1

Trichromacy



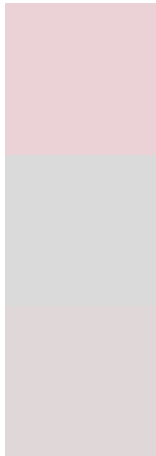
Original Color
EAD2D7

Protanomaly
E0D5D9

Deuteranomaly
ECD1D7

Tritanomaly
EBD1DD

Monochromacy



Original Color
EAD2D7

Achromatopsia
DADADA

Achromatomaly
E0D7D9

CSS Examples

Text

The CSS property to change the color of the text to Hex EAD2D7 is called "color". The color property can be set on classes, ids or directly on the HTML element.

This example shows how text in the color #EAD2D7 looks like.

```
.text, #text, p{  
    color:#EAD2D7  
}
```

If you want to add a text shadow in that color use the text-shadow property, you can generate a text shadow directly with our [CSS Text Shadow Generator](#).

Here you see how black text with a 4 pixel #EAD2D7 colored shadow looks like.

```
.shadow{ text-shadow: 4px 4px 2px #EAD2D7
}
```

Border

The CSS property to change the border of an element to Hex EAD2D7 is called "border". The border property can be set on classes, ids or directly on the HTML element.

This example shows the color as border, it can be applied via the CSS property "border" or "border-color".

```
.border, #border, table{ border:4px solid
#EAD2D7 }
```

If only the border color should be changed use the property `border-color`.

```
.border{ border-color:#EAD2D7 }
```

If you want to add a box shadow in that color use:

Here you see how a box with a 4 pixel #EAD2D7 colored shadow looks like.

```
.boxshadow{ -moz-box-shadow:4px 4px 4px  
4px #EAD2D7; -webkit-box-shadow:4px 4px  
4px 4px #EAD2D7; box-shadow:4px 4px 4px  
4px #EAD2D7 }
```

Background

The CSS property to change the background color of an element to Hex EAD2D7 is called "background". The background property can be set on classes, ids or directly on the HTML element.

```
.background, #background, body{  
background:#EAD2D7 }
```

If only the background color should be changed can be used:

```
.background{ background-color:#EAD2D7 }
```

This example shows the color as background, it is applied via the CSS property "background".

To optimize and compress your CSS code, you can use our [online CSS compressor and optimizer](#) based on csstidy. If you want to create a linear or radial gradient as background or border, check our [CSS Gradient Generator](#).

Hey! You found this booklet interesting? Support Converting Colors with the new Membership Option!

The pro membership hides all ads, plus gives you double the colors in the color bucket, and more awesome pro features!

[Learn more, Memberships starting at \\$2.50/m!](#)

**Follow me
on Twitter!**

@ConvertingColor