

# Converting Colors

Hex(EAD3DA)

Have a look what the booklet for  
Hex(EAD3DA) contains.

<b>Hex(EAD3DA)</b> .....	3
<i><b>Conversions</b></i> .....	4
<i><b>Details</b></i> .....	6
<i><b>Harmonies</b></i> .....	11
<i><b>Previews</b></i> .....	23
<i><b>Color Blindness Simulation</b></i> .....	26
<i><b>CSS Examples</b></i> .....	29

# **Color**

**Hex(EAD3DA)**

# Conversions

## Conversions Part 1

<b>Format</b>	<b>Color</b>
Hex	EAD3DA
RGB	234, 211, 218
RGB Percent	92%, 83%, 85%
CMY	0.0824, 0.1725, 0.1451
CMYK	0.00, 0.10, 0.07, 0.08
HSL	342°, 35%, 87%
HSV	342°, 10%, 92%
XYZ	69.8808, 69.1429, 75.9925
YIQ	218.6750, 11.4610, 7.0530

# Conversions

## Conversions Part 2

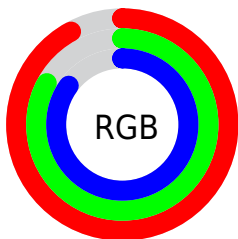
Format	Color
<a href="#">RYB</a>	<a href="#">234, 211, 218</a>
Decimal	<a href="#">15389658</a>
CIELab	<a href="#">86.57, 9.14, -0.55</a>
CIELCh	<a href="#">87, 9.161, 356.543</a>
Yxy	<a href="#">69.1429, 0.3250, 0.3216</a>
Android (android.graphics.Color)	<a href="#">4293579738 (0xFFEAD3DA)</a>
YUV	<a href="#">218.6750, -0.3328, 13.4400</a>
Hunter-Lab	<a href="#">83.1522, 4.4944, 4.0217</a>

# Details

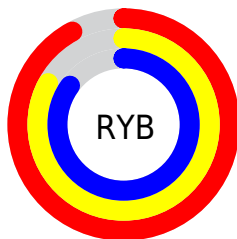
The Hex color **EAD3DA** is a light color, and the websafe version is hex **CCCCCC**. A complement of this color would be **D3EAE3**, and the grayscale version is **DBDBDB**.

A 20% lighter version of the original color is **FFFFFF**, and **B29CA3** is the 20% darker color. If you saturate the color by 10%, you get **EABCCA**, and if you desaturate by 10%, it is **EAEAEA**.

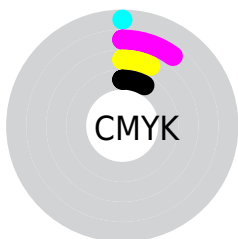
# Distribution



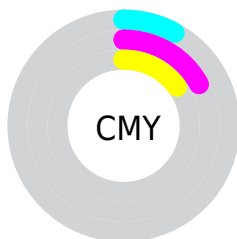
- Red (92%)
- Green (83%)
- Blue (85%)



- Red (92%)
- Yellow (83%)
- Blue (85%)



- Cyan (0%)
- Magenta (10%)
- Yellow (7%)
- Black (8%)



- Cyan (8%)
- Magenta (17%)
- Yellow (15%)

# Brightness & Saturation Gradients

These gradients show how the Hex color EAD3DA changes by changing the brightness by 10 percent. The first figure shows a shift by +10% for each color and the second figure -10%.

Similar to the brightness gradients but the following saturation gradients show a change of the Hex color EAD3DA by changing the saturation by 10% instead.



 EAD3DA

FFFFFF

 EAD3DA

 CEB7BE

 B29CA3

 978289

 7D6970

 645157

 4C3A40

 35242A

 201016

 000000

 EAD3DA

 EAD3DA

 EABCCA

 EAEAEA

 EAA4B9

 EAFFFB

 EA8DA9

 EAFFFF

 EA7599

 EA5E89

 EA4778

 EA2F68

 EA1858

 EA0047

# Harmonies

## Analogous

The Analogous color harmony consists of three colors that are next to each other on the color wheel.



E3D4E2



EAD3DA



ECD3D1

# Triad

The Triadic color harmony groups three colors that are evenly spaced from another and form a triangle on the color wheel.



EAD3DA



D7DBC9



C7DCE7

# Complementary

The Complementary color scheme is a pair of colors which are on the opposite of each other on the color wheel.



EAD3DA



D3EAE3

# Split Complementary

Split-complementary colors differ from the complementary color scheme. The scheme consists of three colors, the original color and two neighbors of the complement color.



C3DEE0



EAD3DA



CEDDCF

# Square

The Square scheme is like the rectangle color scheme, but the four colors are evenly spaced on the color wheel.



EAD3DA



E1D8C7



C6DED7



CFDAEA

# Rectangle

The Rectangle color scheme consists of four colors that form a rectangle on the color wheel.



EAD3DA



EAD4CC



C6DED7



C5DDE5



# Sweetspot

The Sweet Spot groups the original color and five complimentary colors.



EAD3DA



FFF7FA



E3D3EA



807A7C



000000



808080



# Same Dimension

The Same Dimension uses a secret algorithm to generate beautiful new colors.



EAD3DA



FFE0EA



EAD7D3



756A6D



B50037



360010



# Inverse Universe

The Inverse Universe completely reimagines the original color for something new.



EAD3DA



FFE0EA



D3E6EA



756A6D



B50037

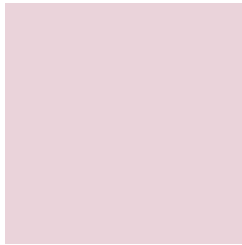


360010



# Previews

## White Background



This preview shows how the Hex color EAD3DA looks on a white background.

## Color Contrast Check

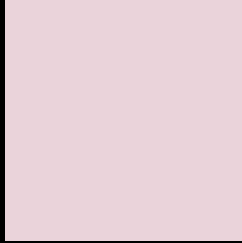
Large Text (above 18pt) WCAG AA × Fail

Any Text WCAG AA × Fail

Large Text (above 18pt) WCAG AAA × Fail

Any Text WCAG AAA × Fail

# Black Background



This preview shows how the Hex color EAD3DA looks on a black background.

## Color Contrast Check

Large Text (above 18pt) WCAG AA ✓ Pass

Any Text WCAG AA ✓ Pass

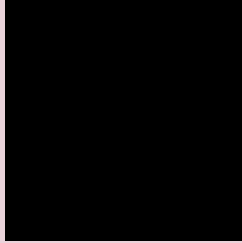
Large Text (above 18pt) WCAG AAA ✓ Pass

Any Text WCAG AAA ✓ Pass

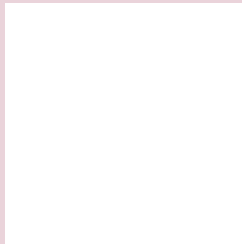
If you want to check with other color combinations, try the [Color Contrast Checker](#).



## Hex EAD3DA Background



This preview shows how black text looks on a background with the Hex color EAD3DA.

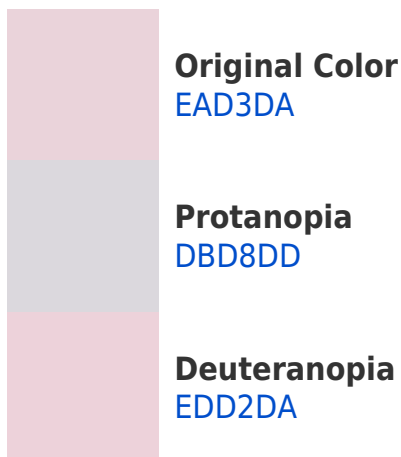


This preview shows how white text looks on a background with the Hex color EAD3DA.

# Color Blindness Simulation

Color vision deficiency is a very complex topic, and I could not describe the different causes any better than Wikipedia does, so if you want to learn more, you should check out their [article about color blindness](#).

## Dichromacy





**Tritanopia**  
EBD2E2

# Trichromacy



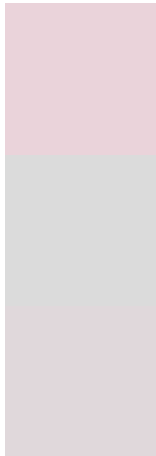
**Original Color**  
EAD3DA

**Protanomaly**  
E0D6DC

**Deuteranomaly**  
ECD2DA

**Tritanomaly**  
EBD2DF

# Monochromacy



**Original Color**  
EAD3DA

**Achromatopsia**  
DBDBDB

**Achromatomaly**  
E0D8DB

# CSS Examples

## Text

The CSS property to change the color of the text to Hex EAD3DA is called "color". The color property can be set on classes, ids or directly on the HTML element.

This example shows how text in the color #EAD3DA looks like.

```
.text, #text, p{  
    color:#EAD3DA  
}
```

If you want to add a text shadow in that color use the text-shadow property, you can generate a text shadow directly with our [CSS Text Shadow Generator](#).

Here you see how black text with a 4 pixel #EAD3DA colored shadow looks like.

```
.shadow{ text-shadow: 4px 4px 2px #EAD3DA
}
```

## Border

The CSS property to change the border of an element to Hex EAD3DA is called "border". The border property can be set on classes, ids or directly on the HTML element.

This example shows the color as border, it can be applied via the CSS property "border" or "border-color".

```
.border, #border, table{ border:4px solid
#EAD3DA }
```

If only the border color should be changed use the property `border-color`.

```
.border{ border-color:#EAD3DA }
```

If you want to add a box shadow in that color use:

Here you see how a box with a 4 pixel #EAD3DA colored shadow looks like.

```
.boxshadow{ -moz-box-shadow:4px 4px 4px  
4px #EAD3DA; -webkit-box-shadow:4px 4px  
4px 4px #EAD3DA; box-shadow:4px 4px 4px  
4px #EAD3DA }
```

# Background

The CSS property to change the background color of an element to Hex EAD3DA is called "background". The background property can be set on classes, ids or directly on the HTML element.

```
.background, #background, body{  
background:#EAD3DA }
```

If only the background color should be changed can be used:

```
.background{ background-color:#EAD3DA }
```

This example shows the color as background, it is applied via the CSS property "background".

To optimize and compress your CSS code, you can use our [online CSS compressor and optimizer](#) based on csstidy. If you want to create a linear or radial gradient as background or border, check our [CSS Gradient Generator](#).



Hey! You found this booklet interesting? Support Converting Colors with the new Membership Option!

The pro membership hides all ads, plus gives you double the colors in the color bucket, and more awesome pro features!

**[Learn more, Memberships starting at \\$2.50/m!](#)**

**Follow me  
on Twitter!**

@ConvertingColor