

Converting Colors

Hex(EAD4CC)

Have a look what the booklet for
Hex(EAD4CC) contains.

Hex(EAD4CC)	3
<i>Conversions</i>	4
<i>Details</i>	6
<i>Harmonies</i>	11
<i>Previews</i>	23
<i>Color Blindness Simulation</i>	26
<i>CSS Examples</i>	29

Color

Hex(EAD4CC)

Conversions

Conversions Part 1

Format	Color
Hex	EAD4CC
RGB	234, 212, 204
RGB Percent	92%, 83%, 80%
CMY	0.0824, 0.1686, 0.2000
CMYK	0.00, 0.09, 0.13, 0.08
HSL	16°, 42%, 86%
HSV	16°, 13%, 92%
XYZ	68.3743, 68.9390, 66.8296
YIQ	217.6660, 15.6800, 2.1760

Conversions

Conversions Part 2

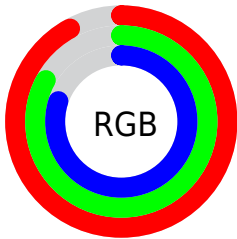
Format	Color
R _Y B	234, 215, 204
Decimal	15389900
CIE Lab	86.47, 6.31, 6.71
CIE LCh	86, 9.214, 46.753
Yxy	68.9390, 0.3349, 0.3377
Android (android.graphics.Color)	4293579980 (0xFFEAD4CC)
YUV	217.6660, -6.7373, 14.3249
Hunter-Lab	83.0295, 1.6919, 10.3988

Details

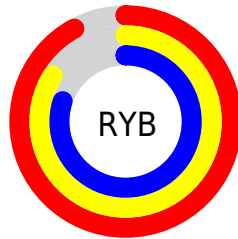
The Hex color **EAD4CC** is a light color, and the websafe version is hex **CCCCCC**. A complement of this color would be **CCE2EA**, and the grayscale version is **DADADA**.

A 20% lighter version of the original color is **FFFFFF**, and **B29D96** is the 20% darker color. If you saturate the color by 10%, you get **EAC3B5**, and if you desaturate by 10%, it is **EAE5E3**.

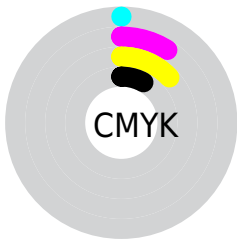
Distribution



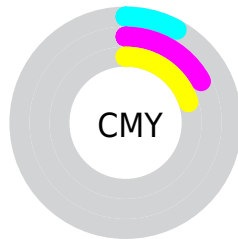
- Red (92%)
- Green (83%)
- Blue (80%)



- Red (92%)
- Yellow (84%)
- Blue (80%)



- Cyan (0%)
- Magenta (9%)
- Yellow (13%)
- Black (8%)



- Cyan (8%)
- Magenta (17%)
- Yellow (20%)

Brightness & Saturation Gradients

These gradients show how the Hex color EAD4CC changes by changing the brightness by 10 percent. The first figure shows a shift by +10% for each color and the second figure -10%.

Similar to the brightness gradients but the following saturation gradients show a change of the Hex color EAD4CC by changing the saturation by 10% instead.

 EAD4CC

FFFFFF

 EAD4CC

 CEB8B1

 B29D96

 97837C

 7D6A63

 64524B

 4C3B35

 35251F

 201108

 000000

 EAD4CC

 EAD4CC

 EAC3B5

 EAE5E3

 EAB29D

 EAF6FB

 EAA186

 EAFFFF

 EA8F6E

 EA7E57

 EA6D40

 EA5C28

 EA4B11

 EA3E00

Harmonies

Analogous

The Analogous color harmony consists of three colors that are next to each other on the color wheel.



ECD3D4



EAD4CC



E4D6C8

Triad

The Triadic color harmony groups three colors that are evenly spaced from another and form a triangle on the color wheel.



EAD4CC



C8DDD4



D6D7E9

Complementary

The Complementary color scheme is a pair of colors which are on the opposite of each other on the color wheel.



EAD4CC



CCE2EA

Split Complementary

Split-complementary colors differ from the complementary color scheme. The scheme consists of three colors, the original color and two neighbors of the complement color.



CBD4E9



EAD4CC



C3DEDD

Square

The Square scheme is like the rectangle color scheme, but the four colors are evenly spaced on the color wheel.



EAD4CC



D0DCCC



C5DDE5



E0D5E4

Rectangle

The Rectangle color scheme consists of four colors that form a rectangle on the color wheel.



EAD4CC



DED8C7



C5DDE5



D2D8EA

Sweetspot

The Sweet Spot groups the original color and five complimentary colors.



EAD4CC



FFF8F5



EACCE2



807B79



000000



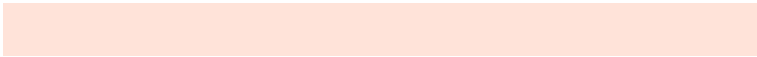
808080

Same Dimension

The Same Dimension uses a secret algorithm to generate beautiful new colors.



EAD4CC



FFE3D9



EAE3CC



756D6A



B53000



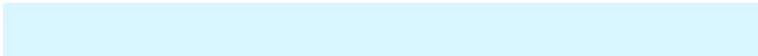
360E00

Inverse Universe

The Inverse Universe completely reimagines the original color for something new.



CCE2EA



D9F5FF



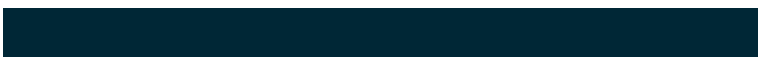
CCD3EA



6A7275



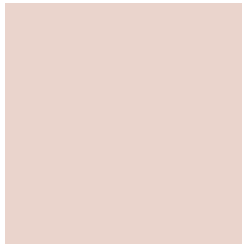
0085B5



002736

Previews

White Background



This preview shows how the Hex color EAD4CC looks on a white background.

Color Contrast Check

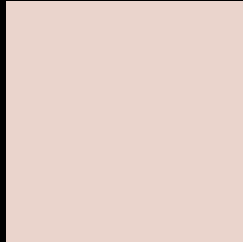
Large Text (above 18pt) WCAG AA × Fail

Any Text WCAG AA × Fail

Large Text (above 18pt) WCAG AAA × Fail

Any Text WCAG AAA × Fail

Black Background



This preview shows how the Hex color EAD4CC looks on a black background.

Color Contrast Check

Large Text (above 18pt) WCAG AA ✓ Pass

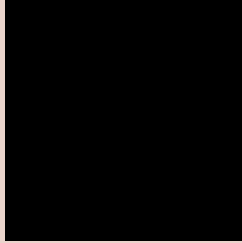
Any Text WCAG AA ✓ Pass

Large Text (above 18pt) WCAG AAA ✓ Pass

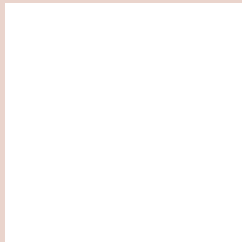
Any Text WCAG AAA ✓ Pass

If you want to check with other color combinations, try the [Color Contrast Checker](#).

Hex EAD4CC Background



This preview shows how black text looks on a background with the Hex color EAD4CC.

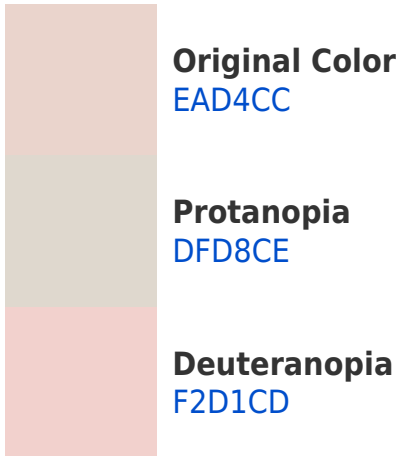


This preview shows how white text looks on a background with the Hex color EAD4CC.

Color Blindness Simulation

Color vision deficiency is a very complex topic, and I could not describe the different causes any better than Wikipedia does, so if you want to learn more, you should check out their [article about color blindness](#).

Dichromacy





Tritanopia
EDD1E1

Trichromacy



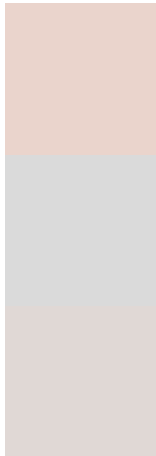
Original Color
EAD4CC

Protanomaly
E3D7CD

Deuteranomaly
EFD2CD

Tritanomaly
ECD2D9

Monochromacy



Original Color
EAD4CC

Achromatopsia
DADADA

Achromatomaly
E0D8D5

CSS Examples

Text

The CSS property to change the color of the text to Hex EAD4CC is called "color". The color property can be set on classes, ids or directly on the HTML element.

This example shows how text in the color #EAD4CC looks like.

```
.text, #text, p{  
    color:#EAD4CC  
}
```

If you want to add a text shadow in that color use the text-shadow property, you can generate a text shadow directly with our [CSS Text Shadow Generator](#).

Here you see how black text with a 4 pixel #EAD4CC colored shadow looks like.

```
.shadow{ text-shadow: 4px 4px 2px #EAD4CC }  
}
```

Border

The CSS property to change the border of an element to Hex EAD4CC is called "border". The border property can be set on classes, ids or directly on the HTML element.

This example shows the color as border, it can be applied via the CSS property "border" or "border-color".

```
.border, #border, table{ border:4px solid #EAD4CC }  
}
```

If only the border color should be changed use the property `border-color`.

```
.border{ border-color:#EAD4CC }
```

If you want to add a box shadow in that color use:

Here you see how a box with a 4 pixel #EAD4CC colored shadow looks like.

```
.boxshadow{ -moz-box-shadow:4px 4px 4px  
4px #EAD4CC; -webkit-box-shadow:4px 4px  
4px 4px #EAD4CC; box-shadow:4px 4px 4px  
4px #EAD4CC }
```

Background

The CSS property to change the background color of an element to Hex EAD4CC is called "background". The background property can be set on classes, ids or directly on the HTML element.

```
.background, #background, body{  
background:#EAD4CC }
```

If only the background color should be changed can be used:

```
.background{ background-color:#EAD4CC }
```

This example shows the color as background, it is applied via the CSS property "background".

To optimize and compress your CSS code, you can use our [online CSS compressor and optimizer](#) based on csstidy. If you want to create a linear or radial gradient as background or border, check our [CSS Gradient Generator](#).

Hey! You found this booklet interesting? Support Converting Colors with the new Membership Option!

The pro membership hides all ads, plus gives you double the colors in the color bucket, and more awesome pro features!

[Learn more, Memberships starting at \\$2.50/m!](#)

**Follow me
on Twitter!**

@ConvertingColor